

## Rabbit Anti-SHISA9 antibody

SL11950R

<b>Product Name</b>	SHISA9
<b>Chinese Name</b>	SHISA 蛋白家族 9 抗体
<b>Alias</b>	2700045P11Rik; CKAMP44; Cystine knot AMPAR modulating protein; DKFZp686D24206; DKFZp686E24206; FLJ10015; FLJ37653; FLJ58277; FLJ99079; FLJ99234; Protein shisa-9; Shisa homolog 9 (Xenopus laevis); Shisa homolog 9; shisa9; SHSA9_HUMAN.
<b>Research Area</b>	Cell biology Neurobiology Channel protein
<b>Immunogen Species</b>	Rabbit
<b>Clonality</b>	Polyclonal
<b>React Species</b>	Mouse(predicted:Human,Rat,Dog,Cow,Horse,Rabbit,Sheep) WB=1:500-2000 (Paraffin sections need antigen repair)
<b>Applications</b>	not yet tested in other applications. optimal dilutions/concentrations should be determined by the end user.
<b>Theoretical molecular weight</b>	44kDa
<b>Cellular localization</b>	The cell membrane
<b>Form</b>	Liquid
<b>Concentration</b>	1mg/ml
<b>immunogen</b>	KLH conjugated synthetic peptide derived from human SHISA9: 251-350/424
<b>Lsotype</b>	IgG
<b>Purification</b>	affinity purified by Protein A
<b>Buffer Solution</b>	1M TBS(pH7.4) with 1% BSA, 3% Proclin300 and 50% Glycerol.
<b>Storage</b>	Shipped at 4°C. Store at -20 °C for one year. Avoid repeated freeze/thaw cycles.
<b>Attention</b>	This product as supplied is intended for research use only, not for use in human, therapeutic or diagnostic applications.
<b>PubMed</b>	<a href="#">PubMed</a>
<b>Product Detail</b>	Regulator of short-term neuronal synaptic plasticity in the dentate gyrus. Associates with AMPA receptors (ionotropic glutamate receptors) in synaptic

spines and promotes AMPA receptor desensitization at excitatory synapses.

**Function:**

Regulator of short-term neuronal synaptic plasticity in the dentate gyrus. Associates with AMPA receptors (ionotropic glutamate receptors) in synaptic spines and promotes AMPA receptor desensitization at excitatory synapses

**Subunit:**

Component of some AMPA receptors (ionotropic glutamate receptors) complex, at least composed of some AMPA receptor (GRIA1, GRIA2 and/or GRIA3), CACNG2 and SHISA9, as well as low level of DLG4

**Subcellular Location:**

Cell projection > dendritic spine membrane. Cell junction > synapse.

**Similarity:**

Belongs to the shisa family. SHISA9 subfamily.

**SWISS:**

B4DS77

**Gene ID:**

729993

**Database links:**

[Entrez Gene: 729993](#) Human

[Entrez Gene: 72555](#) Mouse

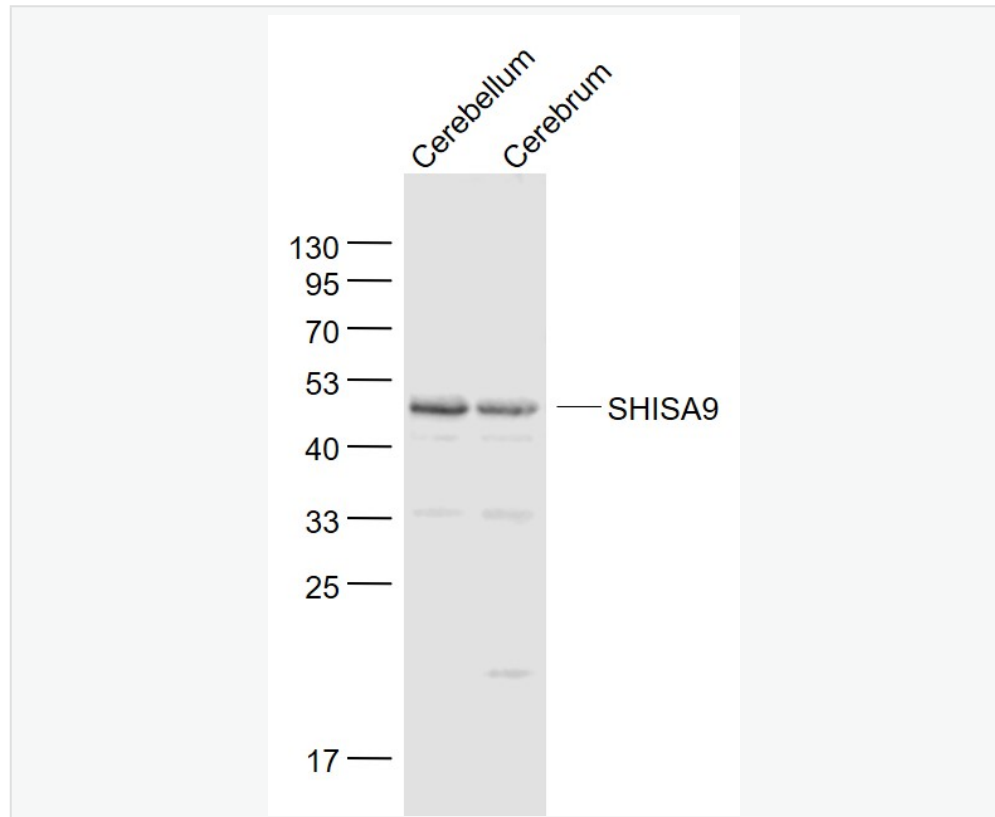
[Entrez Gene: 100361134](#) Rat

[Omim: 613346](#) Human

[SwissProt: B4DS77](#) Human

[SwissProt: Q9CZN4](#) Mouse

**Product Picture**



Sample:

Cerebellum (Mouse) Lysate at 40 ug

Cerebrum (Mouse) Lysate at 40 ug

Primary: Anti- SHISA9 (SL11950R) at 1/1000 dilution

Secondary: IRDye800CW Goat Anti-Rabbit IgG at 1/20000 dilution

Predicted band size: 44 kD

Observed band size: 44 kD