

Rabbit Anti-IL-23 antibody

SL1193R

Product Name IL-23

Chinese Name 白介素-23 抗体

Alias Interleukin-23 subunit alpha; Il23a; IL 23; IL 23A; IL23P19; Interleukin 23 alpha subunit p19; JKA3 induced upon T cell activation; P19; SGRF; IL-23 subunit alpha; IL-23-A; IL-23p19; IL23; Interleukin 23 p19 subunit; Interleukin-23 subunit p19; JKA3 induced upon T cell activation; MGC79388; IL23A_HUMAN.

Research Area Tumour Cell biology immunology

Immunogen Species Rabbit

Clonality Polyclonal

React Species Human, Mouse, (predicted: Rat,)
WB=1:500-2000,IHC-P=1:100-500,IHC-F=1:100-500,IF=1:100-500,ELISA=1:5000-10000

Applications (Paraffin sections need antigen repair)
not yet tested in other applications.
optimal dilutions/concentrations should be determined by the end user.

Theoretical molecular weight 21kDa

Cellular localization Secretory protein

Form Liquid

Concentration 1mg/ml

immunogen KLH conjugated synthetic peptide derived from human IL-23: 101-196/196

Lsotype IgG

Purification affinity purified by Protein A

Buffer Solution 1M TBS(pH7.4) with 1% BSA, 3% Proclin300 and 50% Glycerol.

Storage Shipped at 4°C. Store at -20 °C for one year. Avoid repeated freeze/thaw cycles.

Attention This product as supplied is intended for research use only, not for use in human, therapeutic or diagnostic applications.

PubMed

[PubMed](#)

IL23 is a heterodimeric cytokine consisting in two subunits : p40, shared with IL12 and a distinct one p19 (the IL23 subunit). Although IL12 activates naive T cells, the initial description of IL23 was the preferential action on memory T cells to increase IFN γ production. In conjunction with IL6 and TGF-beta1, IL23 is necessary to maintain the Th1 lineage. IL23 plays an important role in the inflammatory response against infection, and is implicated in the development of cancerous tumors and auto immune diseases. Over expression of p19 correlates with inflammation in multiple organs and epithelial tissues including skin.

Function:

Associates with IL12B to form the IL-23 interleukin, an heterodimeric cytokine which functions in innate and adaptive immunity. IL-23 may constitute with IL-17 an acute response to infection in peripheral tissues. IL-23 binds to an heterodimeric receptor complex composed of IL12RB1 and IL23R, activates the Jak-Stat signaling cascade, stimulates memory rather than naive T-cells and promotes production of proinflammatory cytokines. IL-23 induces autoimmune inflammation and thus may be responsible for autoimmune inflammatory diseases and may be important for tumorigenesis.

Subcellular Location:

Secreted. Secreted upon association with IL12B.

**Product
Detail**

Tissue Specificity:

Secreted by activated dendritic and phagocytic cells and keratinocytes. Also expressed by dermal Langerhans cells (at protein level).

Similarity:

Belongs to the IL-6 superfamily.

SWISS:

Q9NPF7

Gene ID:

51561

Database links:

[Entrez Gene: 51561](#) Human

[Entrez Gene: 83430](#) Mouse

[Omim: 605580](#) Human

[SwissProt: Q9NPF7](#) Human

[SwissProt: Q9EQ14](#) Mouse

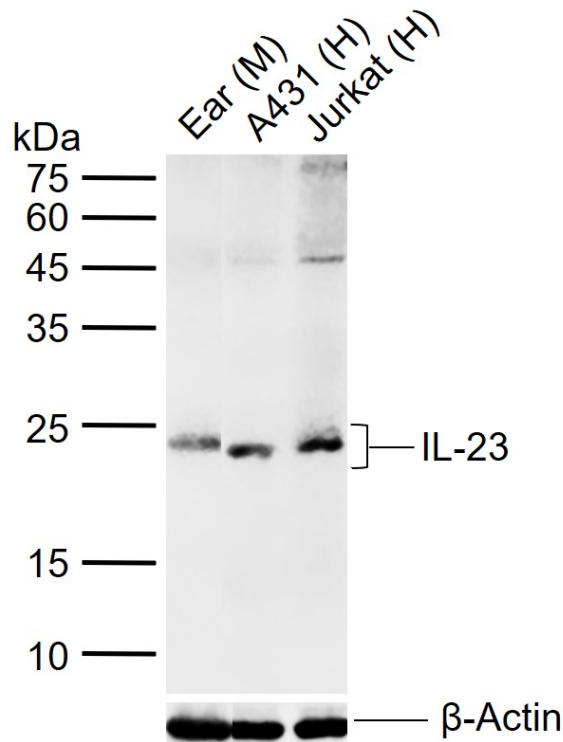
[Unigene: 382212](#) Human

[Unigene: 98309](#) Human

[Unigene: 125482](#) Mouse

IL23(Interleukin-23)作为一种前炎症 cell factor，具有影响机体免疫反应和抗感染作用，白介素 23 能连接 Tumour 关联的炎症和 Tumour 免疫监督缺乏关系的 cell factor。存在于很多人类 Tumour 中，能通过促进血管形成来帮助 Tumour 生长。

Product
Picture



Sample:

Lane 1: Mouse Ear tissue lysates

Lane 2: Human A431 cell lysates

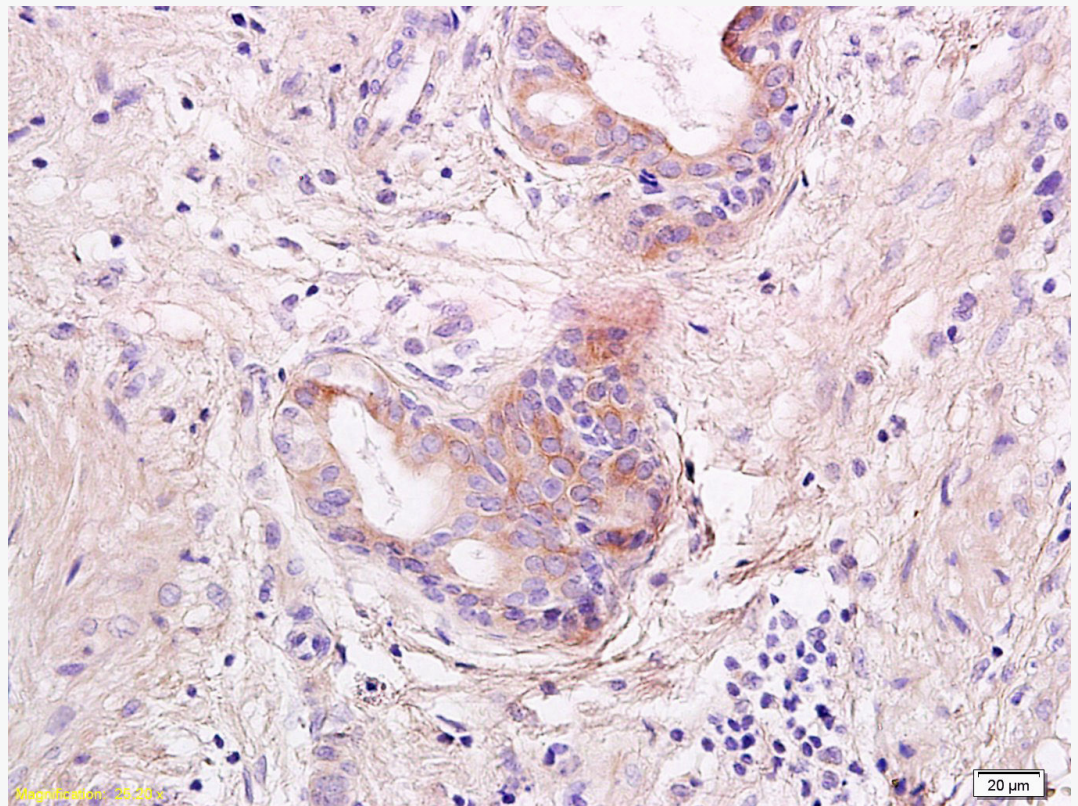
Lane 3: Human Jurkat cell lysates

Primary: Anti-IL-23 (SL1193R) at 1/1000 dilution

Secondary: IRDye800CW Goat Anti-Rabbit IgG at 1/20000 dilution

Predicted band size: 21 kDa

Observed band size: 21 kDa



Tissue/cell: human rhinopolypus tissue; 4% Paraformaldehyde-fixed and paraffin-embedded;

Antigen retrieval: citrate buffer (1M, pH 6.0), Boiling bathing for 15min; Block endogenous peroxidase by 3% Hydrogen peroxide for 30min; Blocking buffer (normal



goat serum,C-0005) at 37°C for 20 min;

Incubation: Anti-IL-23 Polyclonal Antibody, Unconjugated(SL1193R) 1:300, overnight at 4°C, followed by conjugation to the secondary antibody(SP-0023) and DAB(C-0010) staining