

Rabbit Anti-ECE1 antibody

SL1190R

Product Name	ECE1
Chinese Name	内皮素转化酶 1 抗体
Alias	ECE 1; ECE-1; Endothelin converting enzyme 1; ECE1_HUMAN.
Research Area	Tumour immunology Signal transduction Kinases and Phosphatases
Immunogen Species	Rabbit
Clonality	Polyclonal
React Species	Rat(predicted:Human,Mouse,Dog,Pig,Cow,Rabbit,GuineaPig) IHC-P=1:100-500,IHC-F=1:100-500,IF=1:100-500 (Paraffin sections need antigen repair)
Applications	not yet tested in other applications. optimal dilutions/concentrations should be determined by the end user.
Theoretical molecular weight	85kDa
Cellular localization	The cell membrane
Form	Liquid
Concentration	1mg/ml
immunogen	KLH conjugated synthetic peptide derived from human ECE1: 665-770/770 <Extracellular>
Lsotype	IgG
Purification	affinity purified by Protein A
Buffer Solution	1M TBS(pH7.4) with 1% BSA, 3% Proclin300 and 50% Glycerol.
Storage	Shipped at 4°C. Store at -20 °C for one year. Avoid repeated freeze/thaw cycles.
Attention	This product as supplied is intended for research use only, not for use in human, therapeutic or diagnostic applications.
PubMed	PubMed
Product	The protein encoded by this gene is involved in proteolytic processing of endothelin

Detail

precursors to biologically active peptides. Mutations in this gene are associated with Hirschsprung disease, cardiac defects and autonomic dysfunction. Alternatively spliced transcript variants encoding different isoforms have been noted for this gene.[provided by RefSeq, Sep 2009].

Function:

Converts big endothelin-1 to endothelin-1.

Subunit:

Homodimer; disulfide-linked.

Subcellular Location:

Cell Membrane. Single pass type II membrane protein.

Tissue Specificity:

All isoforms are expressed in umbilical vein endothelial cells, polynuclear neutrophils, fibroblasts, atrium cardiomyocytes and ventricles. Isoforms A, B and C are also expressed in placenta, lung, heart, adrenal gland and pheochromocytoma; isoforms A and C in liver, testis and small intestine; isoform B, C and D in endothelial cells and umbilical vein smooth muscle cells; isoforms C and D in saphenous vein cells, and isoform C in kidney.

DISEASE:

Defects in ECE1 are a cause of Hirschsprung disease cardiac defects and autonomic dysfunction (HSCRCDAD) [MIM:613870]. It is a form of Hirschsprung disease with skip-lesions defects, craniofacial abnormalities and other dysmorphic features, and autonomic dysfunction.

Similarity:

Belongs to the peptidase M13 family.

SWISS:

P42892

Gene ID:

1889

Database links:

[Entrez Gene: 281133](#) Cow

[Entrez Gene: 1889](#) Human

[Entrez Gene: 230857](#) Mouse

[Entrez Gene: 94204](#) Rat

[Omim: 600423](#) Human

[SwissProt: P42891](#) Cow

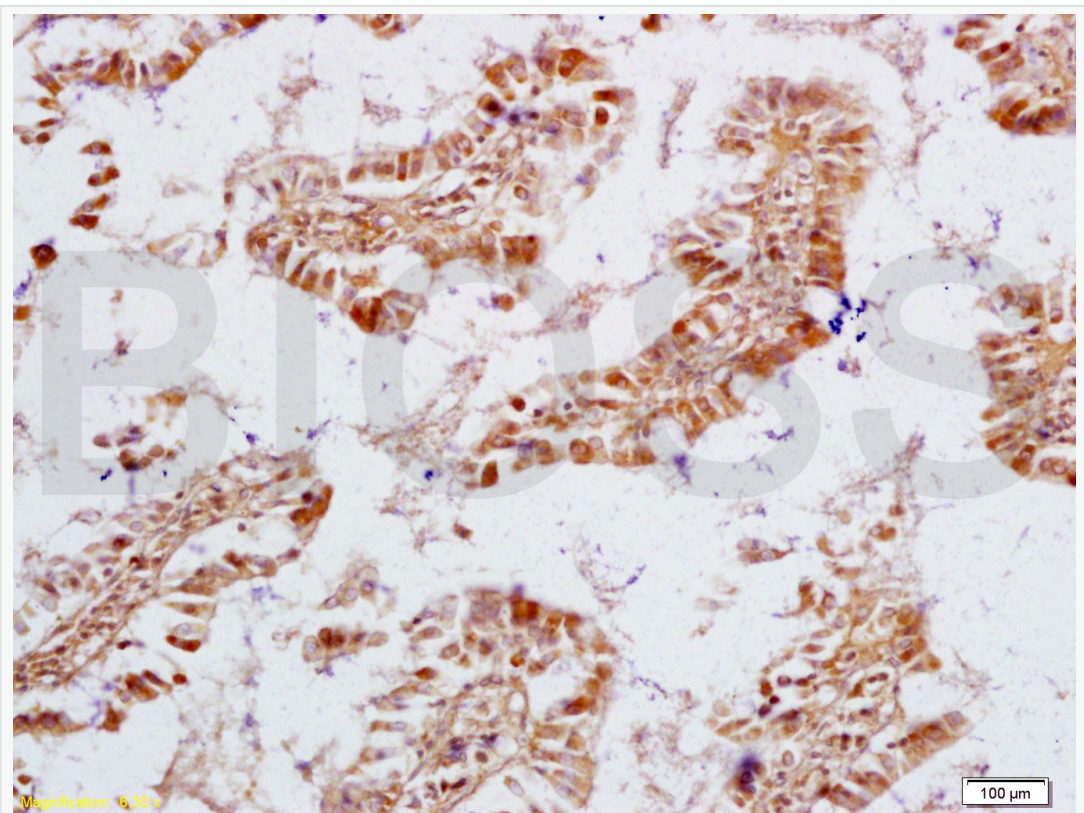
[SwissProt: P42892](#) Human

[SwissProt: Q4PZA2](#) Mouse

[SwissProt: P42893](#) Rat

内皮素转化酶(endothelin—converting enzyme-1)是内皮素 ET 生物合成的关键酶，在体内内皮素生物活性调节上起着极为重要的作用。

**Product
Picture**



Tissue/cell: rat intestine tissue; 4% Paraformaldehyde-fixed and paraffin-embedded;

Antigen retrieval: citrate buffer (1M, pH 6.0), Boiling bathing for 15min; Block



endogenous peroxidase by 3% Hydrogen peroxide for 30min; Blocking buffer (normal goat serum,C-0005) at 37°C for 20 min;
Incubation: Anti-NPY/Neuropeptide Y Polyclonal Antibody, Unconjugated(SLR) 1:200, overnight at 4°C, followed by conjugation to the secondary antibody(SP-0023) and DAB(C-0010) staining