

Rabbit Anti-NOR1 antibody

SL11903R

Product Name	NOR1
Chinese Name	神经元衍生孤儿受体 1 抗体
Alias	CHN; Chondrosarcoma, extraskeletal myxoid, fused to EWS; CSMF; MINOR; Mitogen induced nuclear orphan receptor; Mitogen-induced nuclear orphan receptor; Neuron derived orphan receptor 1; Neuron derived orphan receptor; Neuron-derived orphan receptor 1; NOR1; Nr4a3; NR4A3_HUMAN; Nuclear hormone receptor NOR-1; Nuclear hormone receptor NOR1; Nuclear receptor subfamily 4 group A member 3; TEC; Translocated in extraskeletal chondrosarcoma.
Research Area	Cell biology Neurobiology Signal transduction Epigenetics
Immunogen Species	Rabbit
Clonality	Polyclonal
React Species	Mouse(predicted:Human,Rat,Dog,Rabbit) WB=1:500-2000 (Paraffin sections need antigen repair)
Applications	not yet tested in other applications. optimal dilutions/concentrations should be determined by the end user.
Theoretical molecular weight	68kDa
Cellular localization	The nucleus
Form	Liquid
Concentration	1mg/ml
immunogen	KLH conjugated synthetic peptide derived from human NOR1: 521-626/626
Lsotype	IgG
Purification	affinity purified by Protein A
Buffer Solution	1M TBS(pH7.4) with 1% BSA, 3% Proclin300 and 50% Glycerol.
Storage	Shipped at 4°C. Store at -20 °C for one year. Avoid repeated freeze/thaw cycles.
Attention	This product as supplied is intended for research use only, not for use in human, therapeutic or diagnostic applications.

PubMed

[PubMed](#)

Nur77 (also designated NGFI-B), Nurr1 (Nur-related factor 1), and NOR-1 (neuron-derived orphan receptor 1) constitute the NGFI-B subfamily within the nuclear receptor superfamily. Ligands for these protein have not been identified, and, therefore, they are designated “orphan nuclear receptors”. Genes of the NGFI-B subfamily are classified as immediate-early genes, which are induced rapidly, but transiently, in response to a variety of stimuli. They have been implicated in cell proliferation, differentiation, and apoptosis. The human NOR-1 gene maps to chromosome 9q, and encodes a protein which is expressed in heart, skeletal muscle, thymus, and spleen as well as in brain, where it is developmentally regulated. There-fore, NOR-1 may be involved in regulating neural differentiation. The NOR-1 gene also undergoes chromosomal translocation with the EWS gene to produce a protein thought to affect pre-mRNA splicing.

Function:

Binds to the B1A response-element.

Subcellular Location:

Nucleus.

Tissue Specificity:

Isoform alpha is highly expressed in skeletal muscle. Isoform beta is highly expressed in skeletal muscle and low expressed in fetal brain and placenta.

Product Detail

DISEASE:

Defects in NR4A3 are a cause of Ewing sarcoma (ES) [MIM:612219]. A highly malignant, metastatic, primitive small round cell tumor of bone and soft tissue that affects children and adolescents. It belongs to the Ewing sarcoma family of tumors, a group of morphologically heterogeneous neoplasms that share the same cytogenetic features. They are considered neural tumors derived from cells of the neural crest. Ewing sarcoma represents the less differentiated form of the tumors. Note=A chromosomal aberration involving NR4A3 is found in patients with Erwing sarcoma. Translocation t(9;22)(q22-31;q11-12) with EWSR1. Note=A chromosomal aberration involving NR4A3 is a cause of a form of extraskeletal myxoid chondrosarcomas (EMC). Translocation t(9;17)(q22;q11) with TAF2N.

Similarity:

Belongs to the nuclear hormone receptor family. NR4 subfamily. Contains 1 nuclear receptor DNA-binding domain.

SWISS:

Q92570

Gene ID:
8013

Database links:

[Entrez Gene: 8013](#) Human

[Entrez Gene: 18124](#) Mouse

[Entrez Gene: 397479](#) Pig

[Entrez Gene: 58853](#) Rat

[Omim: 600542](#) Human

[SwissProt: Q92570](#) Human

[SwissProt: Q9QZB6](#) Mouse

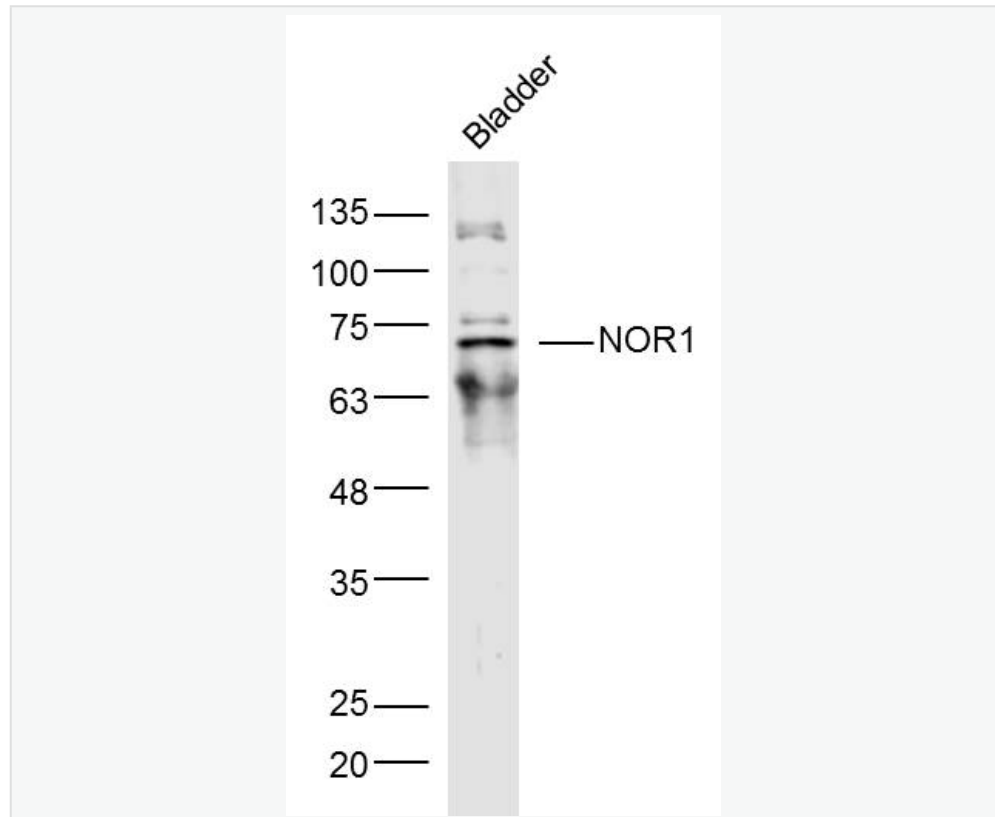
[SwissProt: P51179](#) Rat

[Unigene: 279522](#) Human

[Unigene: 247261](#) Mouse

[Unigene: 62694](#) Rat

Product Picture



Sample:

Bladder (Mouse) Lysate at 40 ug

Primary: Anti- NOR1 (SL11903R) at 1/300 dilution

Secondary: IRDye800CW Goat Anti-Rabbit IgG at 1/20000 dilution

Predicted band size: 68 kD

Observed band size: 68 kD