

Rabbit Anti-Galectin-1 antibody

SL10629R

Product Name Galectin-1

Chinese Name 半乳糖凝集素 1 抗体

Alias 14 kDa laminin-binding protein; 14 kDa lectin; Beta galactoside binding lectin; Beta galactoside binding lectin L 14 I; beta galactoside binding protein; Beta-galactoside-binding lectin L-14-I; Gal 1; Gal-1; Galaptin; Galbp; Galectin; Galectin1; GBP; HBL; HLBP14; HPL; L 14.5; L-14.5; L14; Lactose binding lectin 1; Lactose-binding lectin 1; Lect14; Lectin galactoside binding soluble 1;Lectin galactoside-binding soluble 1; LEG1_HUMAN; LGALS 1; LGALS1; Lgals1 lectin galactose binding soluble 1; MAPK activating protein MP12; Putative MAPK activating protein MP12; Putative MAPK-activating protein PM12; S Lac lectin 1; S-Lac lectin 1.

Research Area Cell biology immunology Signal transduction Apoptosis Growth factors and hormones Endocrinopathy

Immunogen Species Rabbit

Clonality Polyclonal

React Species Human, Mouse, (predicted: Rat, Pig,)

WB=1:500-2000,IHC-P=1:100-500,IHC-F=1:100-500,IF=1:100-500,Flow-Cyt=1ug/Test
(Paraffin sections need antigen repair)

Applications not yet tested in other applications.
optimal dilutions/concentrations should be determined by the end user.

Theoretical molecular weight 15kDa

Cellular localization Secretory protein

Form Liquid

Concentration 1mg/ml

immunogen KLH conjugated synthetic peptide derived from human Galectin-1: 21-100/135

Lsotype IgG

Purification affinity purified by Protein A

Buffer Solution 1M TBS(pH7.4) with 1% BSA, 3% Proclin300 and 50% Glycerol.



Storage	Shipped at 4°C. Store at -20 °C for one year. Avoid repeated freeze/thaw cycles.
Attention	This product as supplied is intended for research use only, not for use in human, therapeutic or diagnostic applications.
PubMed	PubMed The galectins are a family of beta-galactoside-binding proteins implicated in modulating cell-cell and cell-matrix interactions. This gene product may act as an autocrine negative growth factor that regulates cell proliferation. [provided by RefSeq, Jul 2008].
Product Detail	Function: May regulate apoptosis, cell proliferation and cell differentiation. Binds beta-galactoside and a wide array of complex carbohydrates. Inhibits CD45 protein phosphatase activity and therefore the dephosphorylation of Lyn kinase.
	Subunit: Homodimer. Binds LGALS3BP. Interacts with CD2, CD3, CD4, CD7, CD43 and CD45. Interacts with laminin (via poly-N-acetyllactosamine).
	Subcellular Location: Secreted, extracellular space, extracellular matrix.
	Tissue Specificity: Expressed in placenta, maternal decidua and fetal membranes. Within placenta, expressed in trophoblasts, stromal cells, villous endothelium, syncytiotrophoblast apical membrane and villous stroma. Within fetal membranes, expressed in amnion, chorioamniotic mesenchyma and chorion (at protein level). Expressed in cardiac, smooth, and skeletal muscle, neurons, thymus, kidney and hematopoietic cells.
	Similarity: Contains 1 galectin domain.
	SWISS: P09382
	Gene ID: 3956
	Database links: Entrez Gene: 3956 Human Entrez Gene: 16852 Mouse Entrez Gene: 56646 Rat

[Omim: 150570](#) Human

[SwissProt: P09382](#) Human

[SwissProt: P16045](#) Mouse

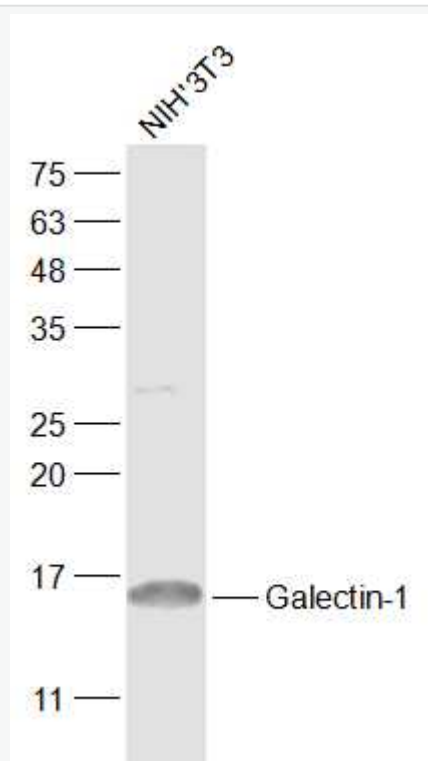
[SwissProt: P11762](#) Rat

[Unigene: 445351](#) Human

[Unigene: 43831](#) Mouse

[Unigene: 57](#) Rat

**Product
Picture**



Sample:

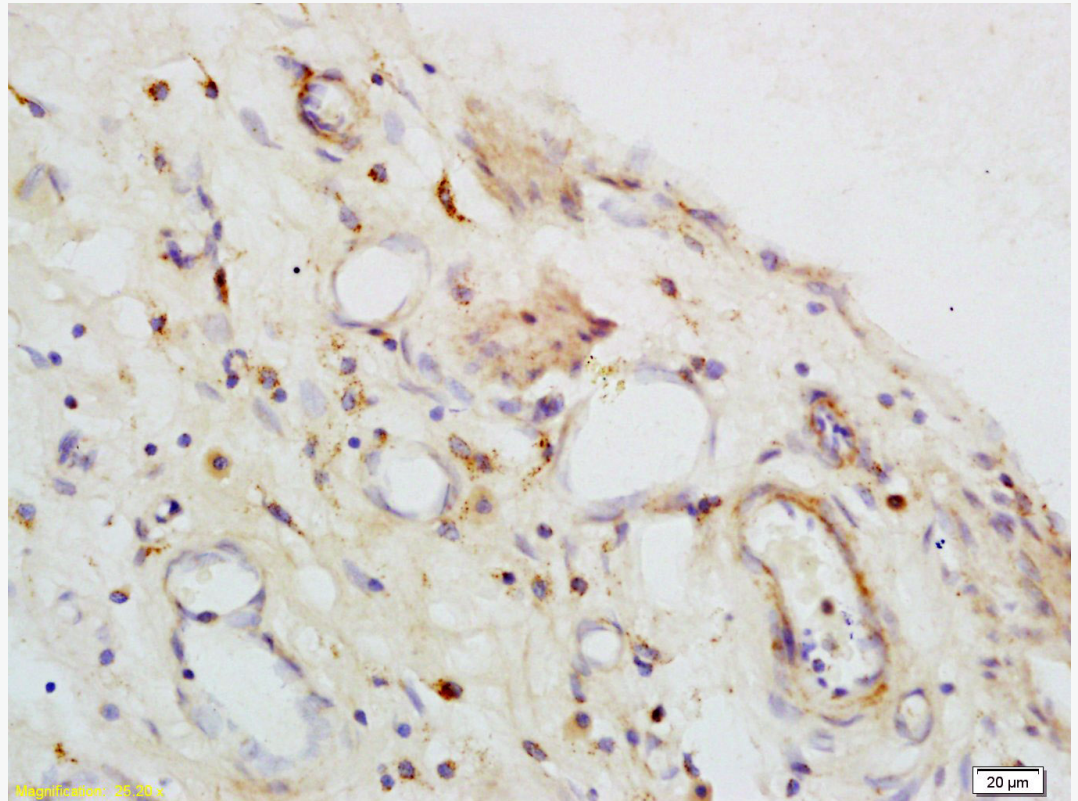
NIH/3T3(Mouse) Cell Lysate at 30 ug

Primary: Anti-Galectin-1 (SL10629R) at 1/500 dilution

Secondary: IRDye800CW Goat Anti-Rabbit IgG at 1/20000 dilution

Predicted band size: 15 kD

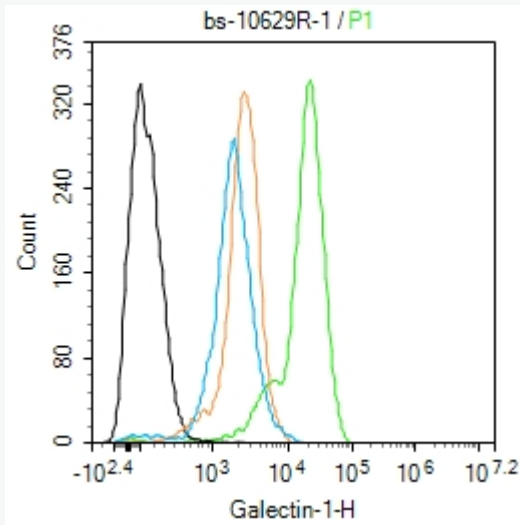
Observed band size: 15 kD



Antigen r Tissue/cell: human gastric carcinoma; 4% Paraformaldehyde-fixed and paraffin-embedded;

etrieval: citrate buffer (1M, pH 6.0), Boiling bathing for 15min; Block endogenous peroxidase by 3% Hydrogen peroxide for 30min; Blocking buffer (normal goat serum,C-0005) at 37°C for 20 min;

Incubation: Anti-Galectin-1 Polyclonal Antibody, Unconjugated(SL10629R) 1:200, overnight at 4°C, followed by conjugation to the secondary antibody(SP-0023) and DAB(C-0010) staining



Blank control:U2-OS.

Primary Antibody (green line): Rabbit Anti-Galectin-1 antibody (SL10629R)

Dilution: 1ug/Test;

Secondary Antibody : Goat anti-rabbit IgG-FITC

Dilution: 0.5ug/Test.

Protocol

The cells were fixed with 4% PFA (10min at room temperature)and then permeabilized with 90% ice-cold methanol for 20 min at -20°C .The cells were then incubated in 5%BSA to block non-specific protein-protein interactions for 30 min at room temperature .Cells stained with Primary Antibody for 30 min at room temperature. The secondary antibody used for 40 min at room temperature.

Acquisition of 20,000 events was performed.