



## Rabbit Anti-Placental lactogen antibody

SL10628R

<b>Product Name</b>	Placental lactogen
<b>Chinese Name</b>	人胎盘泌乳素抗体
<b>Alias</b>	choriomammotropin; Chorionic somatomammotropin A; chorionic somatomammotropin; Chorionic somatomammotropin hormone 1 (placental lactogen); chorionic somatomammotropin hormone 1; Chorionic somatomammotropin hormone 2; CS 1; CS-2; CS-B; CSA; CSB; CSH1; CSMT; hCS A; hCSB; Lactogen precursor; Lactogen, placental; PL; placental lactogen.
<b>Research Area</b>	immunology Growth factors and hormones Endocrinopathy
<b>Immunogen Species</b>	Rabbit
<b>Clonality</b>	Polyclonal
<b>React Species</b>	Human
<b>Applications</b>	IHC-P=1:100-500,IHC-F=1:100-500,IF=1:100-500 (Paraffin sections need antigen repair) not yet tested in other applications. optimal dilutions/concentrations should be determined by the end user.
<b>Theoretical molecular weight</b>	25kDa
<b>Cellular localization</b>	Secretory protein
<b>Form</b>	Liquid
<b>Concentration</b>	1mg/ml
<b>immunogen</b>	KLH conjugated synthetic peptide derived from human Placental lactogen: 101-200/217
<b>Lsotype</b>	IgG
<b>Purification</b>	affinity purified by Protein A
<b>Buffer Solution</b>	1M TBS(pH7.4) with 1% BSA, 3% Proclin300 and 50% Glycerol.
<b>Storage</b>	Shipped at 4°C. Store at -20 °C for one year. Avoid repeated freeze/thaw cycles.
<b>Attention</b>	This product as supplied is intended for research use only, not for use in human, therapeutic

or diagnostic applications.

**PubMed**

[PubMed](#)

Placental lactogen is a member of the somatotropin/prolactin family of hormones and plays an important role in growth control. The gene is located at the growth hormone locus on chromosome 17 along with four other related genes in the same transcriptional orientation; an arrangement which is thought to have evolved by a series of gene duplications. Although the five genes share a remarkably high degree of sequence identity, they are expressed selectively in different tissues. Alternative splicing generates additional isoforms of each of the five growth hormones, leading to further diversity and potential for specialization. This particular family member is expressed mainly in the placenta and utilizes multiple transcription initiation sites.

**Function:**

Produced only during pregnancy and is involved in stimulating lactation, fetal growth and metabolism. Does not interact with GHR but only activates PRLR through zinc-induced dimerization.

**Subcellular Location:**

Secreted.

**Tissue Specificity:**

Expressed in placenta, maternal decidua and fetal membranes. Within placenta, expressed in trophoblasts, stromal cells, villous endothelium, syncytiotrophoblast apical membrane and villous stroma. Within fetal membranes, expressed in amnion, chorioamniotic mesenchyma and chorion (at protein level). Expressed in cardiac, smooth, and skeletal muscle, neurons, thymus, kidney and hematopoietic cells.

**Product Detail**

**Similarity:**

Belongs to the somatotropin/prolactin family.

**SWISS:**

P0DML3

**Gene ID:**

1442

**Database links:**

[Entrez Gene: 1442](#) Human

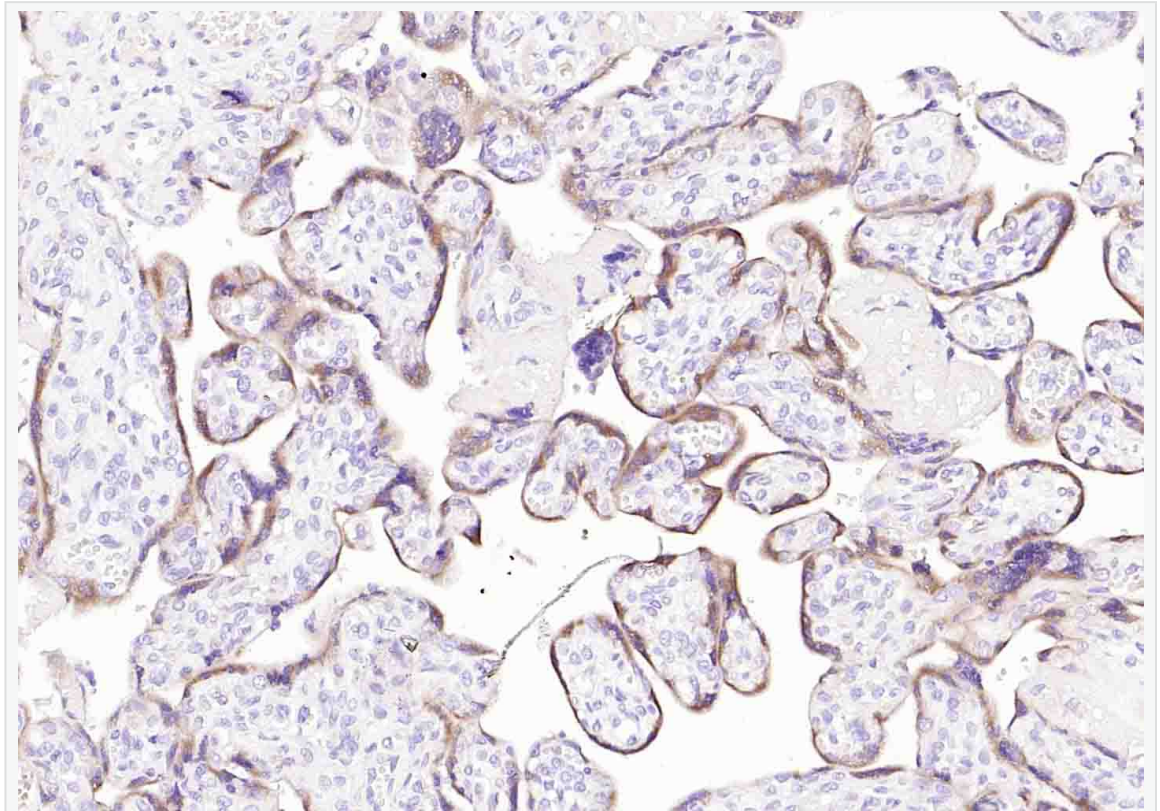
[Entrez Gene: 1443](#) Human

[Omim: 150200](#) Human

[SwissProt: P0DML3](#) Human

[Unigene: 654390](#) Human

**Product  
Picture**



Paraformaldehyde-fixed, paraffin embedded (Human placenta); Antigen retrieval by boiling in sodium citrate buffer (pH6.0) for 15min; Block endogenous peroxidase by 3% hydrogen peroxide for 20 minutes; Blocking buffer (normal goat serum) at 37°C for 30min; Incubation with (Placental lactogen) Polyclonal Antibody, Unconjugated (SL10628R) at 1:200 overnight at 4°C, followed by operating according to SP



SunLong Biotech Co.,LTD  
Tel: 0086-571-56623320 Fax:0086-571-56623318  
E-mail:sales@sunlongbiotech.com  
www.sunlongbiotech.com

Kit(Rabbit) (sp-0023) instructionsand DAB staining.