

Rabbit Anti-ADH1C antibody

SL10592R

Product Name	ADH1C
Chinese Name	乙醇脱氢酶 1 抗体
Alias	ADH gamma subunit; ADH1C; ADH1G_HUMAN; Adh3; Alcohol dehydrogenase 1C (class I) gamma polypeptide; Alcohol dehydrogenase 1C; Alcohol dehydrogenase 1C gamma polypeptide; Alcohol dehydrogenase 3 (class I) gamma polypeptide; Alcohol dehydrogenase 3; Alcohol dehydrogenase subunit gamma; Aldehyde reductase; Class I alcohol dehydrogenase; OTTHUMP00000220209.
Research Area	Tumour Signal transduction The new supersedes the old
Immunogen Species	Rabbit
Clonality	Polyclonal
React Species	Human, (predicted: Cow,) WB=1:500-2000 (Paraffin sections need antigen repair)
Applications	not yet tested in other applications. optimal dilutions/concentrations should be determined by the end user.
Theoretical molecular weight	41kDa
Cellular localization	cytoplasmic
Form	Liquid
Concentration immunogen	1mg/ml KLH conjugated synthetic peptide derived from human ADH1C: 281-375/375
Lsotype	IgG
Purification	affinity purified by Protein A
Buffer Solution	1M TBS(pH7.4) with 1% BSA, 3% Proclin300 and 50% Glycerol.
Storage	Shipped at 4°C. Store at -20 °C for one year. Avoid repeated freeze/thaw cycles.
Attention	This product as supplied is intended for research use only, not for use in human, therapeutic or diagnostic applications.
PubMed	PubMed

This gene encodes class I alcohol dehydrogenase, gamma subunit, which is a member of the alcohol dehydrogenase family. Members of this enzyme family metabolize a wide variety of substrates, including ethanol, retinol, other aliphatic alcohols, hydroxysteroids, and lipid peroxidation products. Class I alcohol dehydrogenase, consisting of several homo- and heterodimers of alpha, beta, and gamma subunits, exhibits high activity for ethanol oxidation and plays a major role in ethanol catabolism. Three genes encoding alpha, beta and gamma subunits are tandemly organized in a genomic segment as a gene cluster. [provided by RefSeq, Jul 2008]

Subcellular Location:

Cytoplasmic.

Similarity:

Belongs to the zinc-containing alcohol dehydrogenase family.

SWISS:

O97959

Product Detail

Gene ID:

126

Database links:

[Entrez Gene: 126](#) Human

[Entrez Gene: 11522](#) Mouse

[Omim: 103730](#) Human

[SwissProt: O97959](#) Baboon

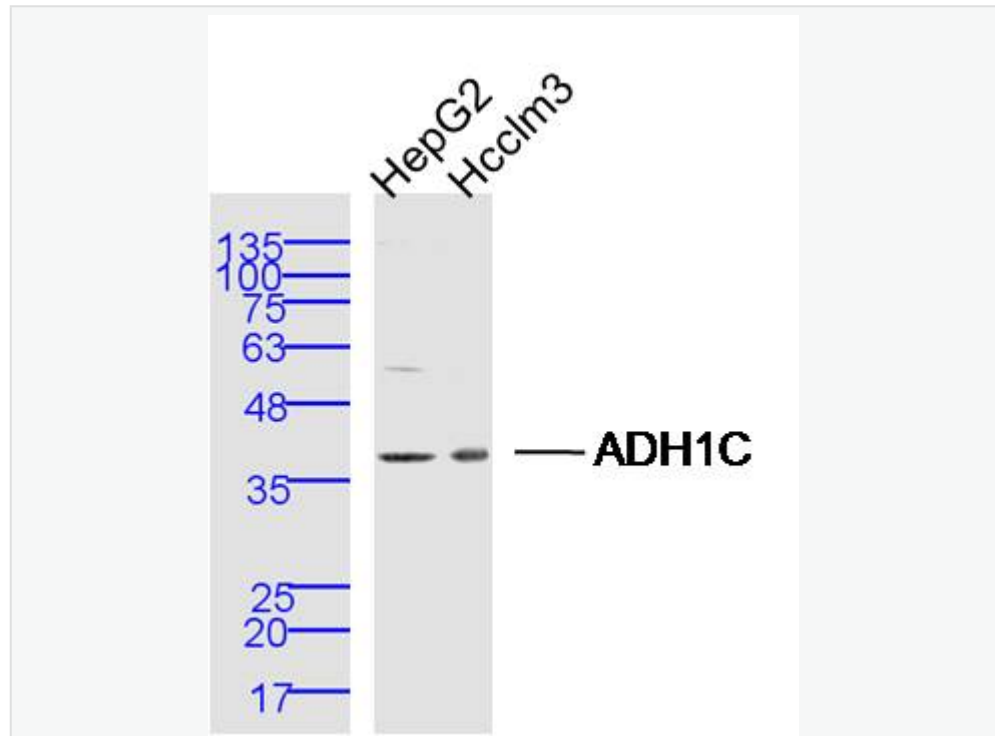
[SwissProt: P00326](#) Human

[SwissProt: P00329](#) Mouse

[Unigene: 654537](#) Human

[Unigene: 2409](#) Mouse

Product Picture



Sample:

HepG2 Cell (Human) Lysate at 40 ug

Hcclm3 Cell (Human) Lysate at 40 ug

Primary: Anti- ADH1C (SL10592R) at 1/300 dilution

Secondary: IRDye800CW Goat Anti-Rabbit IgG at 1/20000 dilution

Predicted band size: 41 kD

Observed band size: 41 kD