

Rabbit Anti-ADH1B antibody

SL10591R

Product Name	ADH1B
Chinese Name	乙醇脱氢酶 1 抗体
Alias	ADH beta subunit; ADH1B; ADH1B_HUMAN; ADH2; Alcohol dehydrogenase 1B; alcohol dehydrogenase 2 (class I), beta polypeptide; Alcohol dehydrogenase 2; Alcohol dehydrogenase subunit beta; Aldehyde reductase; DKFZp686C06125; OTTHUMP00000220192.
Immunogen Species	Rabbit
Clonality	Polyclonal
React Species	Human, IHC-P=1:100-500,IHC-F=1:100-500,IF=1:100-500 (Paraffin sections need antigen repair)
Applications	not yet tested in other applications. optimal dilutions/concentrations should be determined by the end user.
Theoretical molecular weight	41kDa
Cellular localization	cytoplasmic
Form	Liquid
Concentration	1mg/ml
immunogen	KLH conjugated synthetic peptide derived from human ADH1B: 301-375/375
Lsotype	IgG
Purification	affinity purified by Protein A
Buffer Solution	1M TBS(pH7.4) with 1% BSA, 3% Proclin300 and 50% Glycerol.
Storage	Shipped at 4°C. Store at -20 °C for one year. Avoid repeated freeze/thaw cycles.
Attention	This product as supplied is intended for research use only, not for use in human, therapeutic or diagnostic applications.
PubMed	PubMed
Product Detail	The protein encoded by this gene is a member of the alcohol dehydrogenase family. Members of this enzyme family metabolize a wide variety of

substrates, including ethanol, retinol, other aliphatic alcohols, hydroxysteroids, and lipid peroxidation products. This encoded protein, consisting of several homo- and heterodimers of alpha, beta, and gamma subunits, exhibits high activity for ethanol oxidation and plays a major role in ethanol catabolism. Three genes encoding alpha, beta and gamma subunits are tandemly organized in a genomic segment as a gene cluster. Two transcript variants encoding different isoforms have been found for this gene. [provided by RefSeq, Nov 2013]

Subcellular Location:

Cytoplasmic.

Similarity:

Belongs to the zinc-containing alcohol dehydrogenase family.

SWISS:

P00325

Gene ID:

125

Database links:

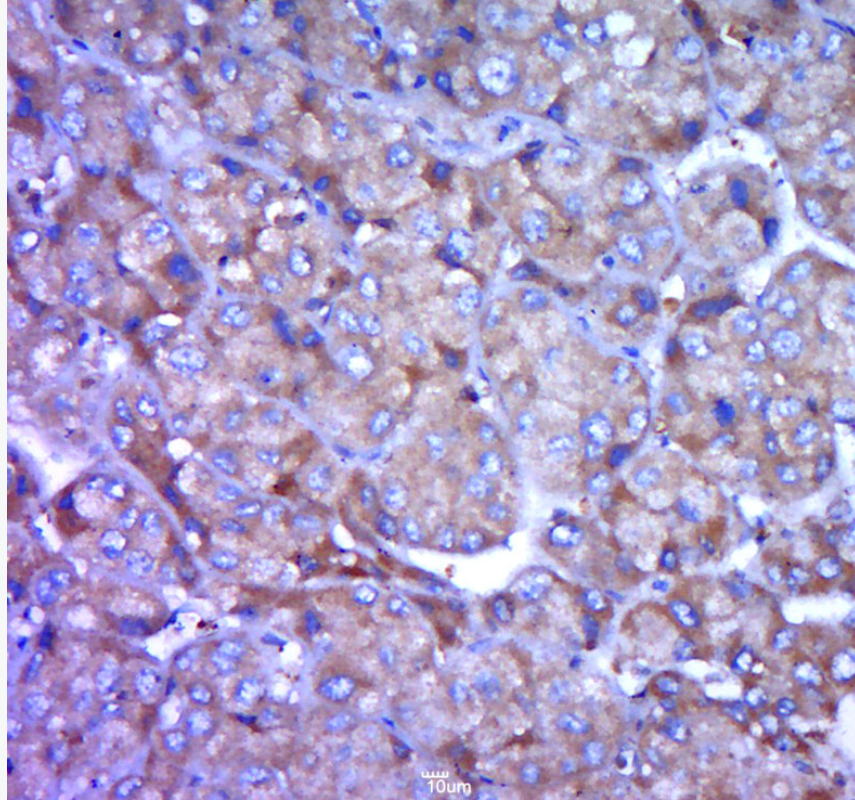
[Entrez Gene: 125](#) Human

[Omim: 103720](#) Human

[SwissProt: P00325](#) Human

[Unigene: 4Human](#)

Product Picture



Paraformaldehyde-fixed, paraffin embedded (human liver carcinoma);
Antigen retrieval by boiling in sodium citrate buffer (pH6.0) for 15min;
Block endogenous peroxidase by 3% hydrogen peroxide for 20 minutes;
Blocking buffer (normal goat serum) at 37°C for 30min; Antibody
incubation with (ADH1B) Polyclonal Antibody, Unconjugated
(SL10591R) at 1:400 overnight at 4°C, followed by a conjugated
secondary (sp-0023) for 20 minutes and DAB staining.