

## Rabbit Anti-ADH1A antibody

SL10590R

<b>Product Name</b>	ADH1A
<b>Chinese Name</b>	乙醇脱氢酶 1 抗体
<b>Alias</b>	ADH1A_HUMAN; EC:1.1.1.1; Alcohol dehydrogenase 1A; ADH1; Alcohol dehydrogenase subunit alpha;
<b>Immunogen Species</b>	Rabbit
<b>Clonality</b>	Polyclonal
<b>React Species</b>	Human,Mouse,Rat
<b>Applications</b>	WB=1:500-2000,ELISA=1:5000-10000 not yet tested in other applications. optimal dilutions/concentrations should be determined by the end user.
<b>Theoretical molecular weight</b>	41kDa
<b>Cellular localization</b>	cytoplasmic
<b>Form</b>	Liquid
<b>Concentration</b>	1mg/ml
<b>immunogen</b>	KLH conjugated synthetic peptide derived from human ADH1A: 301-375/375
<b>Lsotype</b>	IgG
<b>Purification</b>	affinity purified by Protein A
<b>Buffer Solution</b>	1M TBS(pH7.4) with 1% BSA, 3% Proclin300 and 50% Glycerol.
<b>Storage</b>	Shipped at 4°C. Store at -20 °C for one year. Avoid repeated freeze/thaw cycles.
<b>Attention</b>	This product as supplied is intended for research use only, not for use in human, therapeutic or diagnostic applications.
<b>PubMed</b>	<a href="#">PubMed</a>
<b>Product Detail</b>	This gene encodes a member of the alcohol dehydrogenase family. The encoded protein is the alpha subunit of class I alcohol dehydrogenase, which consists of several homo- and heterodimers of alpha, beta and gamma subunits. Alcohol dehydrogenases catalyze the oxidation of alcohols to aldehydes. This gene is active in the liver in early fetal life but only weakly

active in adult liver. This gene is found in a cluster with six additional alcohol dehydrogenase genes, including those encoding the beta and gamma subunits, on the long arm of chromosome 4. Mutations in this gene may contribute to variation in certain personality traits and substance dependence. [provided by RefSeq, Nov 2010]

**Subcellular Location:**

Cytoplasmic.

**Similarity:**

Belongs to the zinc-containing alcohol dehydrogenase family.

**SWISS:**

P07327

**Gene ID:**

124

**Database links:**

[Entrez Gene: 124](#) Human

[Entrez Gene: 11522](#) Mouse

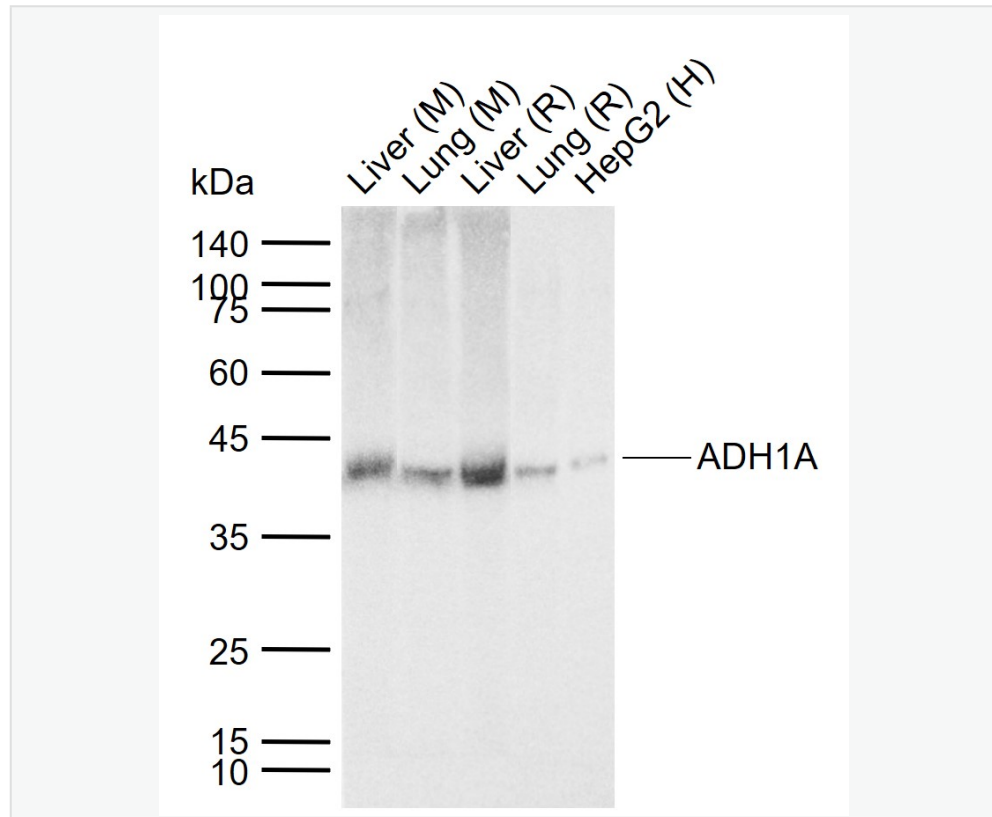
[Entrez Gene: 24172](#) Rat

[SwissProt: P07327](#) Human

[SwissProt: P00329](#) Mouse

[SwissProt: P06757](#) Rat

**Product Picture**



Sample:

Lane 1: Mouse Liver tissue lysates

Lane 2: Mouse Lung tissue lysates

Lane 3: Rat Liver tissue lysates

Lane 4: Rat Lung tissue lysates

Lane 5: Human HepG2 cell lysates

Primary: Anti-ADH1A (SL10590R) at 1/1000 dilution

Secondary: IRDye800CW Goat Anti-Rabbit IgG at 1/20000 dilution

Predicted band size: 41 kDa



SunLong Biotech Co.,LTD  
Tel: 0086-571-56623320 Fax:0086-571-56623318  
E-mail:sales@sunlongbiotech.com  
www.sunlongbiotech.com

Observed band size: 41 kDa