

Rabbit Anti-FGL2 antibody

SL10587R

Product Name FGL2

Chinese Name 凝血酶原酶/维介素抗体

Alias Fibroleukin; Cytotoxic T-lymphocyte-specific protein; Fibrinogen-like protein 2; Fibrinogen like protein 2; Prothrombinase; Fibroleukin; pT49; T49; FGL2_HUMAN.

Research Area immunology t-lymphocyte

Immunogen Species Rabbit

Clonality Polyclonal

React Species Human,Rat (predicted:Mouse,Horse,Rabbit)

WB=1:500-2000,IHC-P=1:100-500,IHC-F=1:100-500,IF=1:100-500 (Paraffin sections need antigen repair)

Applications not yet tested in other applications.
optimal dilutions/concentrations should be determined by the end user.

Theoretical molecular weight 49kDa

Cellular localization Secretory protein

Form Liquid

Concentration 1mg/ml

immunogen KLH conjugated synthetic peptide derived from human FGL2: 231-330/439

Lsotype IgG

Purification affinity purified by Protein A

Buffer Solution 1M TBS(pH7.4) with 1% BSA, 3% Proclin300 and 50% Glycerol.

Storage Shipped at 4°C. Store at -20 °C for one year. Avoid repeated freeze/thaw cycles.

Attention This product as supplied is intended for research use only, not for use in human, therapeutic or diagnostic applications.

PubMed [PubMed](#)

Product FGL2 is a secreted protein that is similar to the beta- and gamma-chains of fibrinogen.

Detail

The carboxyl-terminus of the encoded protein consists of the fibrinogen-related domains (FRED). The encoded protein forms a tetrameric complex which is stabilized by interchain disulfide bonds. It may play a role in physiologic functions at mucosal sites. It is constitutively expressed in cytotoxic T-cells. Lack of expression in other lymphoid- and nonlymphoid-derived cell lines suggested that expression of FGL2 may be restricted to lymphocytes. FGL2 is induced via a mechanism involving IFNG and components of the IFNG signaling pathway, including STAT1 and IRF1.

Function:

May play a role in physiologic lymphocyte functions at mucosal sites

Subunit:

Homotetramer; disulfide-linked.

Subcellular Location:

Secreted.

Tissue Specificity:

Constitutively expressed in cytotoxic T-cells.

Similarity:

Contains 1 fibrinogen C-terminal domain.

SWISS:

Q14314

Gene ID:

10875

Database links:

[Entrez Gene: 511711](#) Cow

[Entrez Gene: 10875](#) Human

[Entrez Gene: 14190](#) Mouse

[Entrez Gene: 84586](#) Rat

[Omim: 605351](#) Human

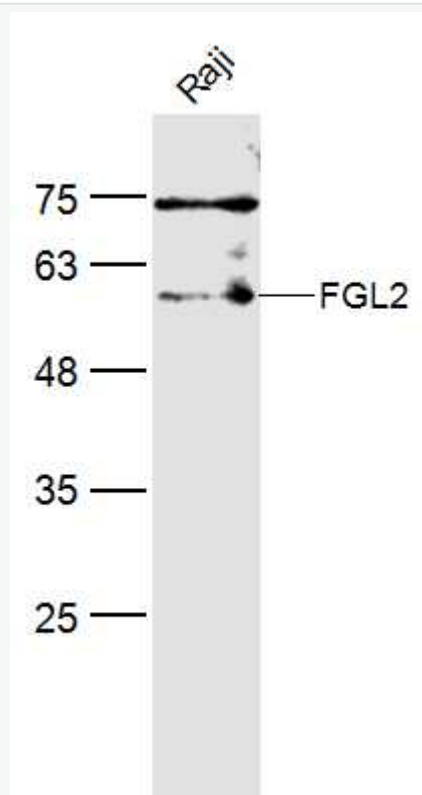
[SwissProt: Q14314](#) Human

[SwissProt: P12804](#) Mouse

[Unigene: 520989](#) Human

[Unigene: 292100](#) Mouse

**Product
Picture**



Sample:

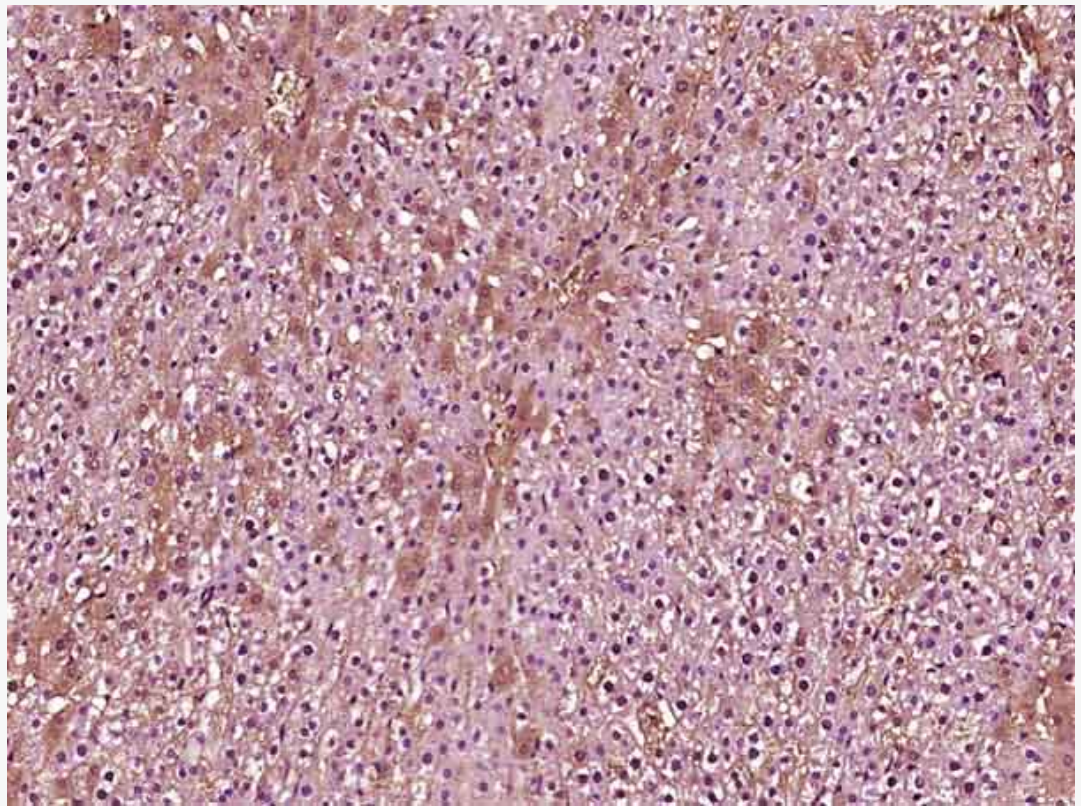
Raji(Human) Cell Lysate at 40 ug

Primary: Anti-FGL2 (SL10587R) at 1/300 dilution

Secondary: IRDye800CW Goat Anti-Rabbit IgG at 1/20000 dilution

Predicted band size: 49 kD

Observed band size: 49 kD



Paraformaldehyde-fixed, paraffin embedded (Rat liver); Antigen retrieval by boiling in sodium citrate buffer (pH6.0) for 15min; Block endogenous peroxidase by 3% hydrogen peroxide for 20 minutes; Blocking buffer (normal goat serum) at 37°C for 30min; Antibody incubation with (FGL2) Polyclonal Antibody, Unconjugated (SL10587R) at 1:400 overnight at 4°C, followed by operating according to SP Kit(Rabbit) (sp-0023) instructions and DAB staining.