



Rabbit Anti-Integrin Alpha 3 + Beta 1 antibody

SL1057R

Product Name Integrin Alpha 3 + Beta 1

Chinese Name 整合素 $\alpha 3\beta 1$ 抗体

Alias Integrin Alpha 3 / Beta 1; Integrin VLA 4 beta subunit; Alpha 3 subunit of VLA 3 receptor; CD29; CD49C; Fibronectin receptor; Fibronectin receptor beta subunit; Galactoprotein B3; GAPB3; VL3A; VLA 3 alpha chain; VLA3a. Integrin $\alpha 3\beta 1$; Integrin $\alpha 3 \beta 1$; Integrin $\alpha 3+\beta 1$.

Research Area Cell biology immunology Signal transduction Cell adhesion molecule

Immunogen Species Rabbit

Clonality Polyclonal

React Species Human, Mouse, Rat, (predicted: Dog, Pig, Cow, Horse, Sheep,)

WB=1:500-2000,IHC-P=1:100-500,IHC-F=1:100-500,IF=1:100-500,Flow-Cyt=1ug/Test

Applications (Paraffin sections need antigen repair)

not yet tested in other applications.

optimal dilutions/concentrations should be determined by the end user.

Theoretical molecular weight 115kDa

Cellular localization The nucleus cytoplasmic

Form Liquid

Concentration 1mg/ml

immunogen KLH conjugated synthetic peptide derived from human Integrin Alpha 3(976-1025aa) + Beta 1(35-47aa)

Lsotype IgG

Purification affinity purified by Protein A

Buffer Solution 1M TBS(pH7.4) with 1% BSA, 3% Proclin300 and 50% Glycerol.

Storage Shipped at 4°C. Store at -20 °C for one year. Avoid repeated freeze/thaw cycles.

Attention

This product as supplied is intended for research use only, not for use in human, therapeutic or diagnostic applications.

PubMed

[PubMed](#)

The protein encoded by this gene belongs to the family of integrins. Integrins are heterodimeric integral membrane proteins composed of an alpha chain and a beta chain, and function as cell surface adhesion molecules. This gene encodes alpha 3 subunit, which undergoes post-translational cleavage in the extracellular domain to yield disulfide-linked light and heavy chains that join with beta 1 subunit to form an integrin that interacts with many extracellular-matrix proteins. Alternatively spliced transcript variants encoding different isoforms have been identified for this gene. [provided by RefSeq, Oct 2008]

Function:

Integrin alpha-3/beta-1 is a receptor for fibronectin, laminin, collagen, epiligrin, thrombospondin and CSPG4. Alpha-3/beta-1 may mediate with LGALS3 the stimulation by CSPG4 of endothelial cells migration.

Subunit:

Heterodimer of an alpha and a beta subunit. The alpha subunit is composed of an heavy and a light chain linked by a disulfide bond. Alpha-3 associates with beta-1. Interacts with HPS5.

Product Detail

Subcellular Location:

Membrane; Single-pass type I membrane protein.

SWISS:

P05556

Gene ID:

3675

Database links:

[Entrez Gene: 3675](#) Human

[Entrez Gene: 3688](#) Human

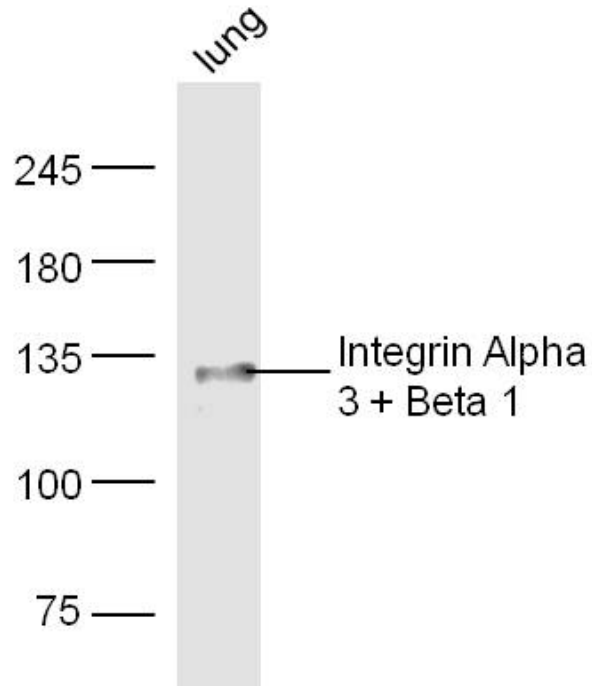
[Omim: 135630](#) Human

[Omim: 605025](#) Human

[SwissProt: P05556](#) Human

[SwissProt: P26006](#) Human

**Product
Picture**



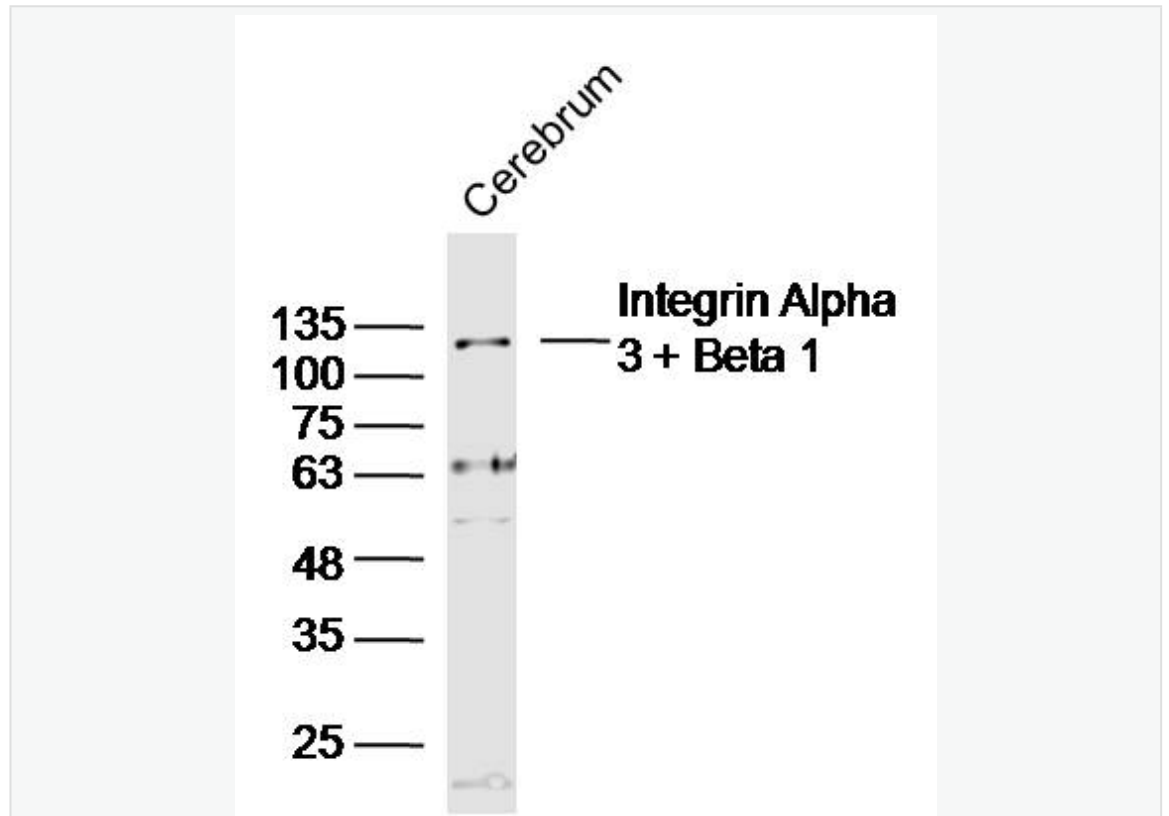
Sample: Lung (Mouse) Lysate at 30 ug

Primary: Anti- Integrin Alpha 3 + Beta 1 (SL1057R) at 1/300 dilution

Secondary: IRDye800CW Goat Anti-Rabbit IgG at 1/20000 dilution

Predicted band size: 115 kD

Observed band size: 130 kD



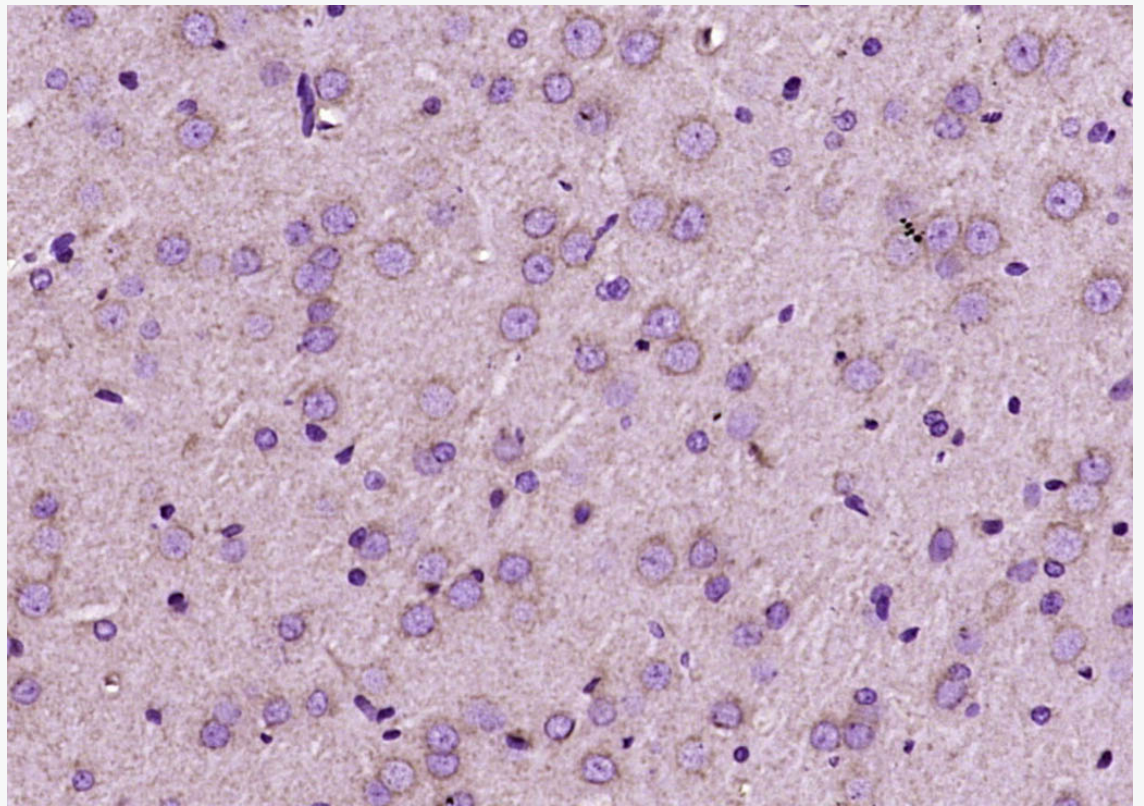
Sample: Cerebrum (Mouse) Lysate at 30 ug

Primary: Anti- Integrin Alpha 3 + Beta 1 (SL1057R) at 1/300 dilution

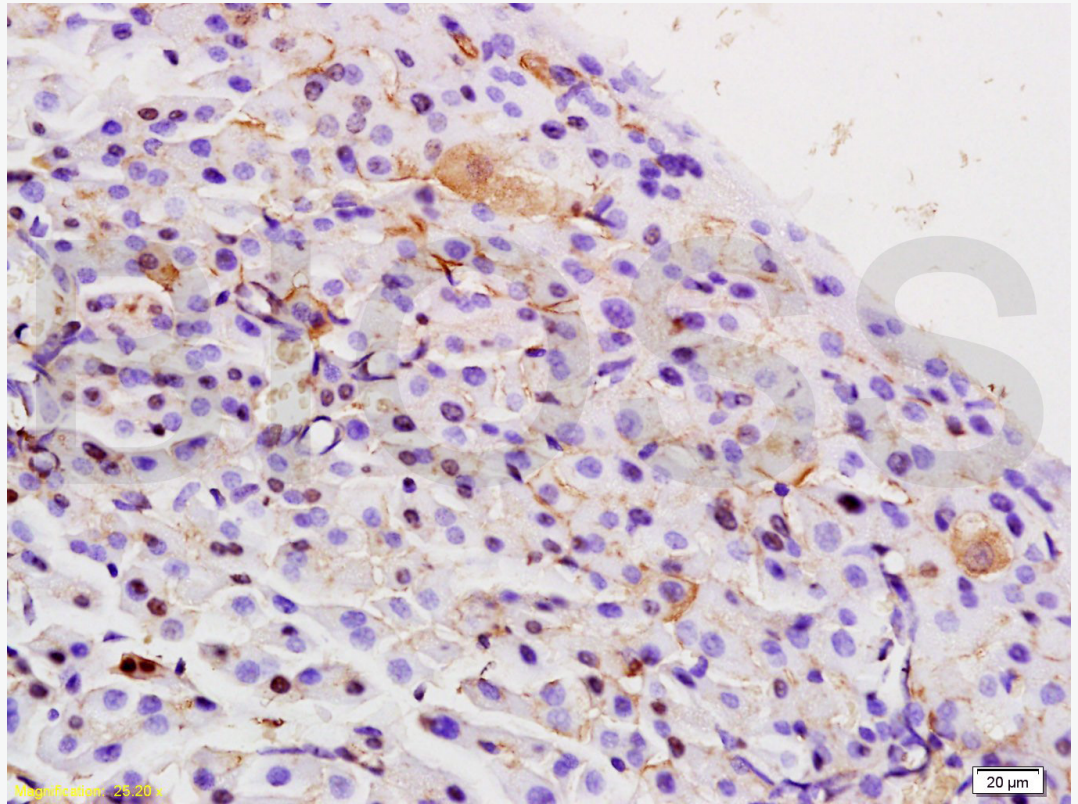
Secondary: IRDye800CW Goat Anti-Rabbit IgG at 1/20000 dilution

Predicted band size: 115 kD

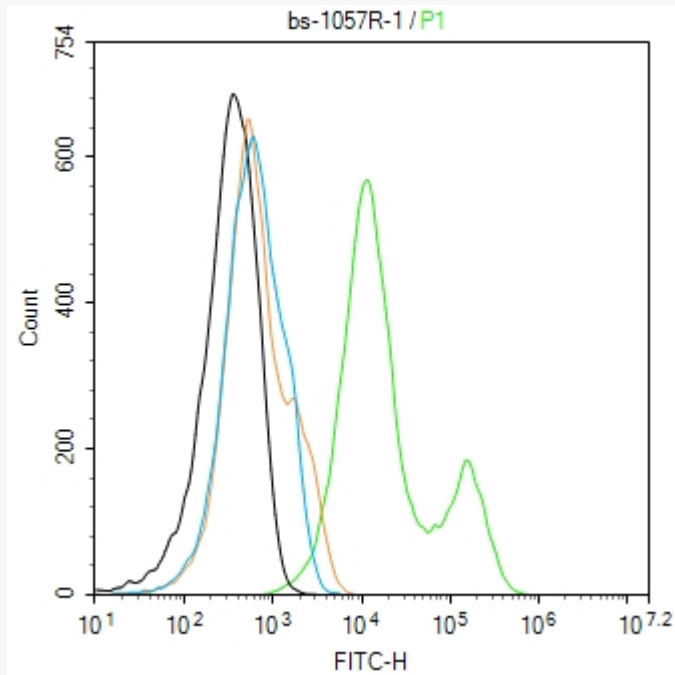
Observed band size: 117 kD



Paraformaldehyde-fixed, paraffin embedded (rat brain); Antigen retrieval by boiling in sodium citrate buffer (pH6.0) for 15min; Block endogenous peroxidase by 3% hydrogen peroxide for 20 minutes; Blocking buffer (normal goat serum) at 37°C for 30min; Antibody incubation with (Integrin Alpha 3 + Beta 1) Polyclonal Antibody, Unconjugated (SL1057R) at 1:200 overnight at 4°C, followed by operating according to SP Kit(Rabbit) (sp-0023) instructions and DAB staining.



Tissue/cell: rat pancreas tissue; 4% Paraformaldehyde-fixed and paraffin-embedded;
Antigen retrieval: citrate buffer (1M, pH 6.0), Boiling bathing for 15min; Block
endogenous peroxidase by 3% Hydrogen peroxide for 30min; Blocking buffer (normal
goat serum,C-0005) at 37 $^{\circ}$ for 20 min;
Incubation: Anti-Integrin Alpha 3 + Beta 1 Polyclonal Antibody,
Unconjugated(SL1057R) 1:200, overnight at 4 $^{\circ}$ C, followed by conjugation to the
secondary antibody(SP-0023) and DAB(C-0010) staining



Blank control:A431.

Primary Antibody (green line): Rabbit Anti-Integrin Alpha 3 + Beta 1 antibody (SL1057R)

Dilution: 1ug/Test;

Secondary Antibody (white blue line) : Goat anti-rabbit IgG-AF488

Dilution: 0.5ug/Test.

Isotype control (orange line) : Normal Rabbit IgG

Protocol

The cells were incubated in 5%BSA to block non-specific protein-protein interactions for 30 min at room temperature .Cells stained with Primary Antibody for 30 min at room temperature. The secondary antibody used for 40 min at room temperature.



SunLong Biotech Co.,LTD
Tel: 0086-571-56623320 Fax:0086-571-56623318
E-mail:sales@sunlongbiotech.com
www.sunlongbiotech.com

Acquisition of 20,000 events was performed.