

Rabbit Anti-Centrin 1 antibody

SL10574R

Product Name	Centrin 1
Chinese Name	中心体蛋白 1 抗体
Alias	Caltractin; Caltractin isoform 2; CEN 1; CEN1; Centrin EF hand protein 1; Centrin-1; Centrin1; CETN 1; CETN; CETN1; CETN1_HUMAN; EF hand protein 1; EF-hand protein 1.
Research Area	Signal transduction Cyclin Cell differentiation
Immunogen Species	Rabbit
Clonality	Polyclonal
React Species	Mouse (predicted:Human,Rat,Dog,Horse)
Applications	WB=1:500-2000 (Paraffin sections need antigen repair) not yet tested in other applications. optimal dilutions/concentrations should be determined by the end user.
Theoretical molecular weight	20kDa
Cellular localization	cytoplasmic
Form	Liquid
Concentration	1mg/ml
immunogen	KLH conjugated synthetic peptide derived from human Centrin 1: 21-120/172
Lsotype	IgG
Purification	affinity purified by Protein A
Buffer Solution	1M TBS(pH7.4) with 1% BSA, 3% Proclin300 and 50% Glycerol.
Storage	Shipped at 4°C. Store at -20 °C for one year. Avoid repeated freeze/thaw cycles.
Attention	This product as supplied is intended for research use only, not for use in human, therapeutic or diagnostic applications.
PubMed	PubMed
Product Detail	The protein encoded by this gene plays important roles in the determination of centrosome position and segregation, and in the process of microtubule severing. This encoded protein is localized to the centrosome of interphase

cells, and redistributes to the region of the spindle poles during mitosis, reflecting the dynamic behavior of the centrosome during the cell cycle. [provided by RefSeq, Jul 2008]

Function:

Plays a fundamental role in microtubule-organizing center structure and function.

Subcellular Location:

Cytoplasm, cytoskeleton, centrosome. Centrosome of interphase and mitotic cells.

Similarity:

Belongs to the centrin family.
Contains 4 EF-hand domains.

SWISS:

Q12798

Gene ID:

1068

Database links:

[Entrez Gene: 1068](#) Human

[Entrez Gene: 26369](#) Mouse

[Omir: 603187](#) Human

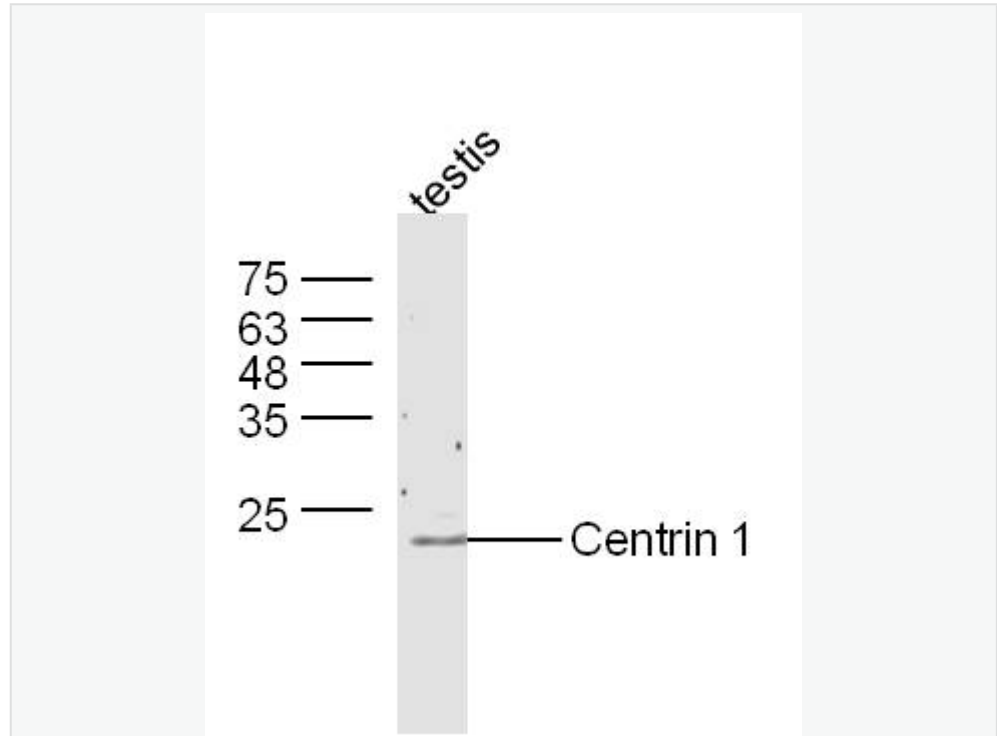
[SwissProt: Q12798](#) Human

[SwissProt: P41209](#) Mouse

[Unigene: 122511](#) Human

[Unigene: 195831](#) Mouse

Product Picture



Sample: testis (Mouse) Lysate at 40 ug

Primary: Anti-Centrin 1(SL10574R) at 1/300 dilution

Secondary: IRDye800CW Goat Anti-Rabbit IgG at 1/20000 dilution

Predicted band size: 20 kD

Observed band size: 20 kD