

## Rabbit Anti-FBXO42 antibody

SL10560R

**Product Name** FBXO42

**Chinese Name** FBXO42 蛋白抗体

**Alias** F box only protein 42; F box protein 42; FBX42; FBXO 42; KIAA1332; FBX42\_HUMAN.

**Immunogen Species** Rabbit

**Clonality** Polyclonal

**React Species** Mouse, (predicted: Human, Rat, Chicken, Dog, Cow, Horse, Rabbit, Sheep, )  
IHC-P=1:100-500,IHC-F=1:100-500,ICC/IF=1:100-500,IF=1:100-500,ELISA=1:5000-10000  
(Paraffin sections need antigen repair)

**Applications** not yet tested in other applications.  
optimal dilutions/concentrations should be determined by the end user.

**Theoretical molecular weight** 78kDa

**Cellular localization** The nucleus

**Form** Liquid

**Concentration** 1mg/ml

**immunogen** KLH conjugated synthetic peptide derived from human FBXO42: 621-717/717

**Lsotype** IgG

**Purification** affinity purified by Protein A

**Buffer Solution** 1M TBS(pH7.4) with 1% BSA, 3% Proclin300 and 50% Glycerol.

**Storage** Shipped at 4°C. Store at -20 °C for one year. Avoid repeated freeze/thaw cycles.

**Attention** This product as supplied is intended for research use only, not for use in human, therapeutic or diagnostic applications.

**PubMed** [PubMed](#)

**Product Detail** FBXO42 (F-box only protein 42) is a 717 amino acid protein that contains four Kelch repeats and one N-terminal F-box domain, and belongs to the F-box family of proteins. F-box proteins are critical components of the SCF (Skp1-CUL-1-F-box protein) type E3 ubiquitin ligase complex and are involved in substrate recognition and recruitment for ubiquitination. They are

members of a larger family of proteins that are involved in the regulation of a wide variety of cellular processes (including the cell cycle, immune response, signaling cascades and developmental processes) through the targeting of proteins, such as cyclins, cyclin-dependent kinase inhibitors, I $\kappa$ B- $\alpha$  and  $\beta$ -catenin, for degradation by the proteasome after ubiquitination.

**Function:**

Substrate-recognition component of some SCF(SKP1-CUL1-F-box protein)-type E3 ubiquitin ligase complex. Specifically recognizes p53/TP53, promoting its ubiquitination and degradation.

**Subunit:**

Component of some SCF complex, composed of CUL1, SKP1, RBX1 and FBXO42. Interacts (via the kelch domain) with p53/TP53; interaction is direct.

**Tissue Specificity:**

Expressed at moderate levels in liver, ovary, kidney, testis and adult brain, and at low levels in heart and fetal brain, FBXO42 directly interacts with Skp1 p19 and CUL-1.

**Similarity:**

Contains 1 F-box domain.

Contains 4 Kelch repeats.

**SWISS:**

Q6P3S6

**Gene ID:**

54455

**Database links:**

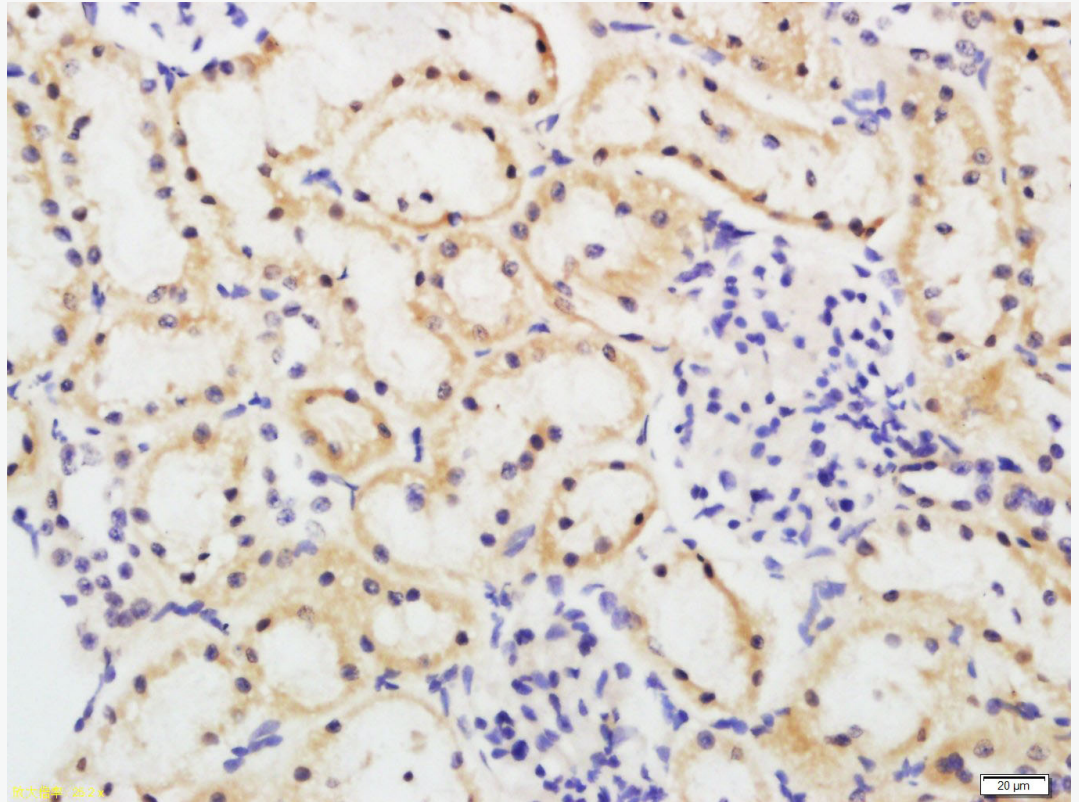
[Entrez Gene: 54455](#) Human

[Omim: 609109](#) Human

[SwissProt: Q6P3S6](#) Human

[Unigene: 522384](#) Human

**Product  
Picture**



Tissue/cell: mouse kidney tissue; 4% Paraformaldehyde-fixed and paraffin-embedded;  
Antigen retrieval: citrate buffer ( 1M, pH 6.0 ), Boiling bathing for 15min; Block  
endogenous peroxidase by 3% Hydrogen peroxide for 30min; Blocking buffer (normal  
goat serum,C-0005) at 37°C for 20 min;  
Incubation: Anti-FBXO42 Polyclonal Antibody, Unconjugated(SL10560R) 1:200,  
overnight at 4°C, followed by conjugation to the secondary antibody(SP-0023) and  
DAB(C-0010) staining