

Rabbit Anti-GOT2 antibody

SL10557R

Product Name	GOT2
Chinese Name	谷草转氨酶 2 抗体
Alias	ASPATA; FABP pm; Got 2; Aspartate aminotransferase; Aspartate aminotransferase 2; Aspartate aminotransferase, mitochondrial; EC 2.6.1.1; FABP 1; FABPpm; Fatty acid binding protein; FLJ40994; Glutamate oxaloacetate transaminase 2; Glutamate oxaloacetate transaminase 2, mitochondrial; Glutamate oxaloacetate transaminase, mitochondrial; Glutamic oxaloacetic transaminase 2, mitochondrial (aspartate aminotransferase 2) ; KAT4; KATIV; Kynurenine aminotransferase IV; mAspAT; mitAAT; Mitochondrial aspartate aminotransferase; OTTMUSP00000017748; Plasma membrane fatty acid binding protein; Plasma membrane-associated fatty acid-binding protein; Transaminase A; MGC102129; MGC115763; AL022787; AATM_HUMAN.
Research Area	Cardiovascular Cell biology Apoptosis transcriptional regulatory factor Kinases and Phosphatases Mitochondrion
Immunogen Species	Rabbit
Clonality	Polyclonal
React Species	Human, Mouse, (predicted: Rat, Rabbit,) WB=1:500-2000
Applications	not yet tested in other applications. optimal dilutions/concentrations should be determined by the end user.
Theoretical molecular weight	45kDa
Cellular localization	cytoplasmic The cell membrane Mitochondrion
Form	Liquid
Concentration	1mg/ml
immunogen	KLH conjugated synthetic peptide derived from human GOT2: 81-180/430
Lsotype	IgG
Purification	affinity purified by Protein A
Buffer Solution	1M TBS(pH7.4) with 1% BSA, 3% Proclin300 and 50% Glycerol.

Storage

Shipped at 4°C. Store at -20 °C for one year. Avoid repeated freeze/thaw cycles.

Attention

This product as supplied is intended for research use only, not for use in human, therapeutic or diagnostic applications.

PubMed

[PubMed](#)

GOT2 [Glutamate oxaloacetate transaminase] is a ubiquitous pyridoxal phosphate dependent enzyme which exists in both mitochondrial and cytosolic forms. The enzyme plays an important role in amino acid metabolism and in the urea and tricarboxylic acid cycles. The 2 isoenzymes are homodimeric. In liver about 80% of the enzyme activity is mitochondrial in origin, whereas in serum the enzyme activity is largely cytosolic. Although the mitochondrial and soluble forms of GOT are coded by different chromosomes, the 2 show close homology in amino acid sequence and were presumably derived from a common ancestral gene. Serum GOT [with SGPT] levels are usually elevated in states of hepatocellular injury (injury to the liver cells), the highest levels are associated with hepatitis of a viral origin. High levels are also found after myocardial infarction, when SGPT levels are lower.

Function:

Catalyzes the irreversible transamination of the L-tryptophan metabolite L-kynurenine to form kynurenic acid (KA). Plays a key role in amino acid metabolism. Important for metabolite exchange between mitochondria and cytosol. Facilitates cellular uptake of long-chain free fatty acids.

Product Detail

Subunit:

Homodimer.

Subcellular Location:

Mitochondrion matrix. Cell membrane. Note=Exposure to alcohol promotes translocation to the cell membrane.

Similarity:

Belongs to the class-I pyridoxal-phosphate-dependent aminotransferase family.

SWISS:

P00505

Gene ID:

2806

Database links:

[Entrez Gene: 2806](#) Human

[Entrez Gene: 14719](#) Mouse

[Entrez Gene: 25721](#) Rat

[Omim: 138150](#) Human

[SwissProt: P00505](#) Human

[SwissProt: P05202](#) Mouse

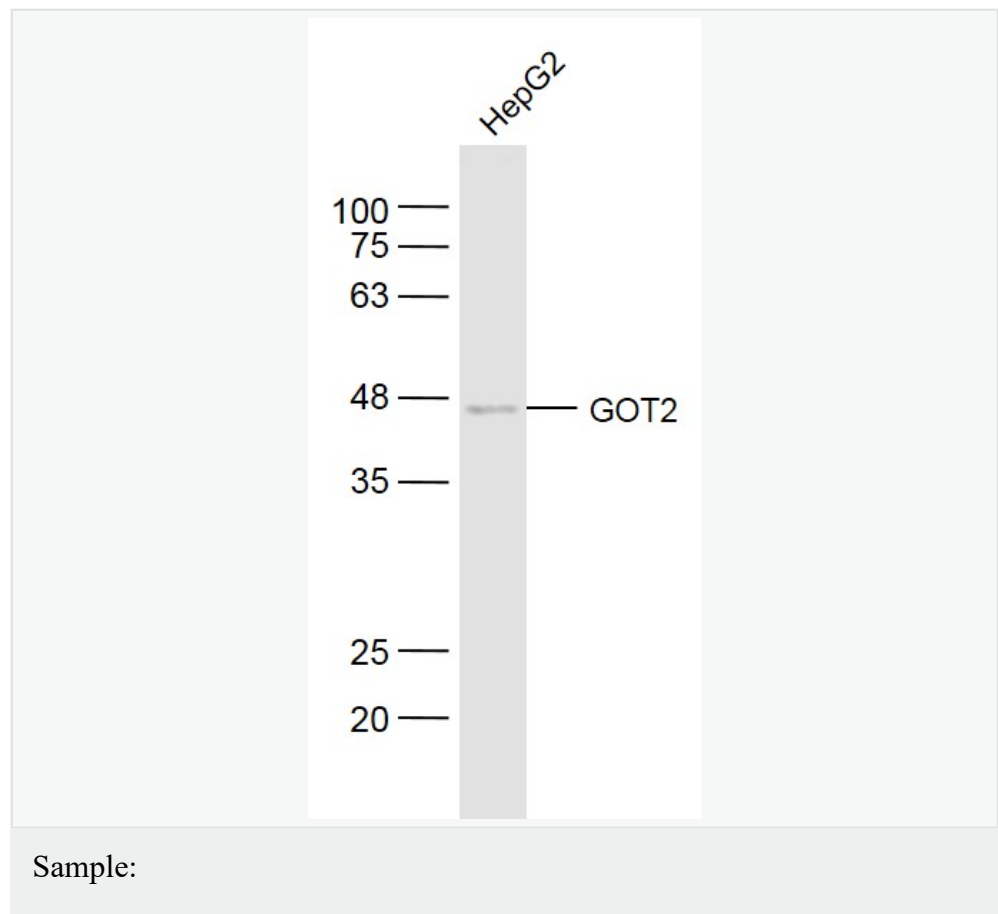
[SwissProt: P00507](#) Rat

[Unigene: 599470](#) Human

[Unigene: 230169](#) Mouse

[Unigene: 98650](#) Rat

Product Picture



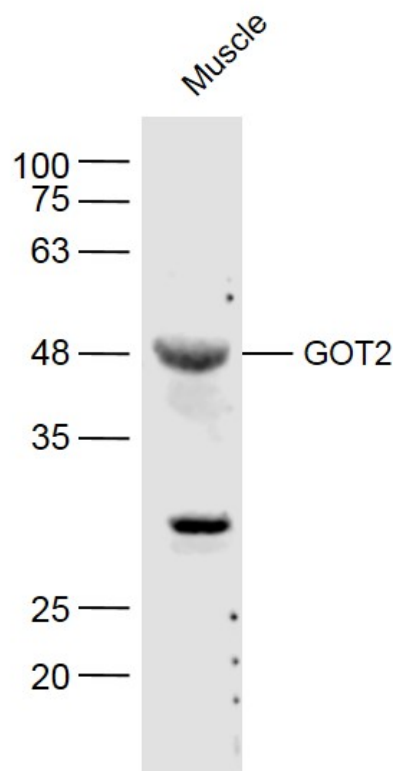
HepG2(Human) Cell Lysate at 30 ug

Primary: Anti-GOT2 (SL10557R) at 1/300 dilution

Secondary: IRDye800CW Goat Anti-Rabbit IgG at 1/20000 dilution

Predicted band size: 45 kD

Observed band size: 45 kD



Sample:

Muscle(Mouse) Lysate at 40 ug

Primary: Anti-GOT2 (SL10557R) at 1/300 dilution

Secondary: IRDye800CW Goat Anti-Rabbit IgG at 1/20000 dilution



Predicted band size: 45 kD

Observed band size: 45 kD