

Rabbit Anti-SLC27A1 antibody

SL10556R

Product Name SLC27A1

Chinese Name 长链脂肪酸 Transporter1 抗体

Alias FATP1; ACSVL5; FATP 1; FATP; Fatty acid transport protein 1; Long chain fatty acid transport protein 1; Solute carrier family 27 (fatty acid transporter) member 1; Solute carrier family 27 member 1; S27A1_HUMAN.

Immunogen Species Rabbit

Clonality Polyclonal

React Species Mouse, (predicted: Human, Rat, Dog, Pig, Cow, Horse, Sheep,)

Applications IHC-P=1:100-500,IHC-F=1:100-500,IF=1:100-500 (Paraffin sections need antigen repair)
not yet tested in other applications.
optimal dilutions/concentrations should be determined by the end user.

Theoretical molecular weight 71kDa

Cellular localization cytoplasmic The cell membrane

Form Liquid

Concentration 1mg/ml

immunogen KLH conjugated synthetic peptide derived from human SLC27A1: 551-646/646 <Cytoplasmic>

Lsotype IgG

Purification affinity purified by Protein A

Buffer Solution 1M TBS(pH7.4) with 1% BSA, 3% Proclin300 and 50% Glycerol.

Storage Shipped at 4°C. Store at -20 °C for one year. Avoid repeated freeze/thaw cycles.

Attention This product as supplied is intended for research use only, not for use in human, therapeutic or diagnostic applications.

PubMed [PubMed](#)

Product SLC27A1 (Solute carrier family 27 member 1) is involved in translocation of

Detail

long-chain fatty acids (LFCA) across the plasma membrane. SLC27A1 may act directly as a bona fide transporter, or alternatively, in a cytoplasmic or membrane-associated multimeric protein complex to trap and draw fatty acids towards accumulation. It also plays a pivotal role in regulating available LFCA substrates from exogenous sources in tissues undergoing high levels of beta-oxidation or triglyceride synthesis and may be involved in regulation of cholesterol metabolism.

Function:

Thin filament-associated protein that is implicated in the regulation and modulation of smooth muscle contraction. It is capable of binding to actin, calmodulin, troponin C and tropomyosin. The interaction of calponin with actin inhibits the actomyosin Mg-ATPase activity.

Subunit:

Self-associates. May function as a homodimer.

Subcellular Location:

Cell membrane; Single-pass membrane protein. Endomembrane system; Single-pass membrane protein. Cytoplasm. Note=Plasma membrane and intracellular membranes, at least in adipocytes. Predominantly cytoplasmic in myocytes.

Tissue Specificity:

Highest levels of expression are detected in muscle and adipose tissue small, intermediate levels in small intestine, and barely detectable in liver.

Similarity:

Belongs to the calponin family.

Contains 3 calponin-like repeats.

Contains 1 CH (calponin-homology) domain.

SWISS:

Q6PCB7

Gene ID:

376497

Database links:

[Entrez Gene: 376497](#) Human

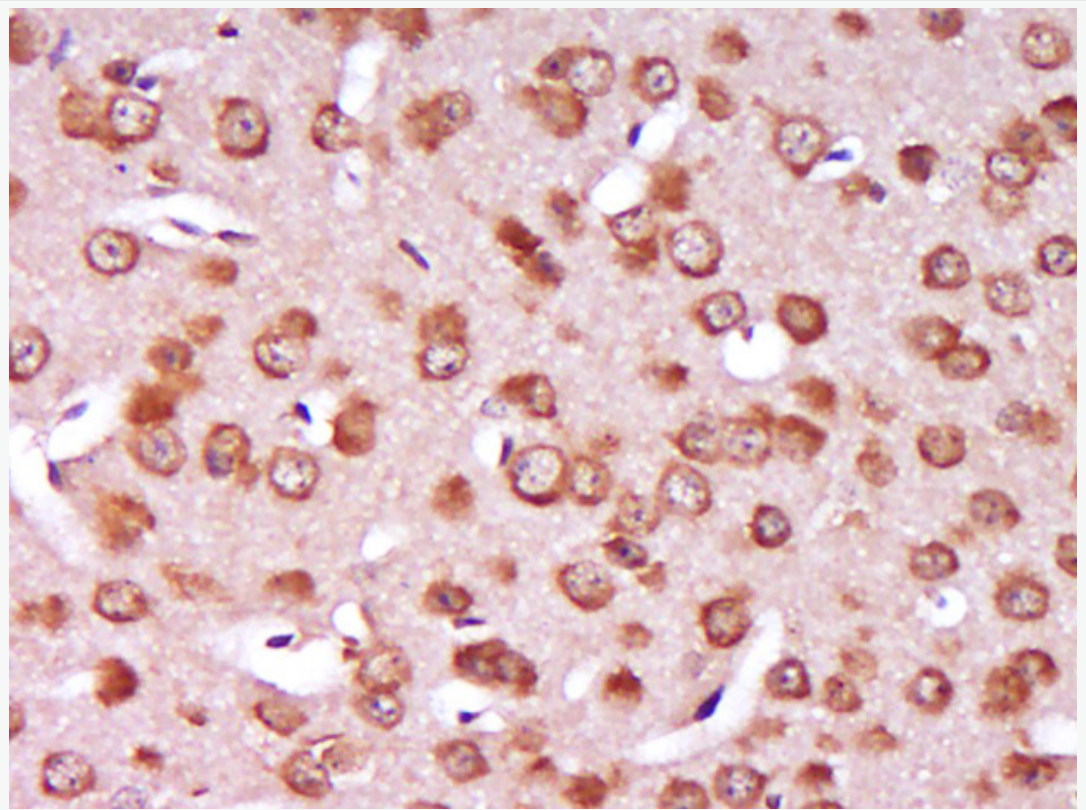
[Entrez Gene: 26457](#) Mouse

[Omim: 600691](#) Human

[SwissProt: Q6PCB7](#) Human

[SwissProt: Q60714](#) Mouse

**Product
Picture**



Paraformaldehyde-fixed, paraffin embedded (Mouse brain); Antigen retrieval by boiling in sodium citrate buffer (pH6.0) for 15min; Block endogenous peroxidase by 3% hydrogen peroxide for 20 minutes; Blocking buffer (normal goat serum) at 37°C for 30min; Antibody incubation with (SLC27A1) Polyclonal Antibody, Unconjugated (SL10556R) at 1:400 overnight at 4°C, followed by operating according to SP Kit(Rabbit) (sp-0023) instructions and DAB staining.