

## Rabbit Anti-IL-1 Alpha Propeptide antibody

SL10540R

<b>Product Name</b>	IL-1 Alpha Propeptide
<b>Chinese Name</b>	白介素 1 $\alpha$ 前肽/IL-1 $\alpha$ 前肽抗体
<b>Alias</b>	interleukin-1 alpha; Hematopoietin 1; IL 1 alpha; IL1 alpha; IL 1; IL 1A; Il-1 $\alpha$ ; IL1; IL1A; IL1F1; ilia; Interleukin 1 alpha; Interleukin 1 alpha precursor; Interleukin1 alpha; Preinterleukin 1 alpha; Pro interleukin 1 alpha; Prointerleukin 1 alpha; IL1A_HUMAN. IL-1 $\alpha$ Propeptide; IL-1 $\alpha$ Propeptide; IL1 $\alpha$ Propeptide; IL 1 $\alpha$ Propeptide; IL 1 $\alpha$ Propeptide.
<b>Immunogen Species</b>	Rabbit
<b>Clonality</b>	Polyclonal
<b>React Species</b>	(predicted:Human,Mouse,Rat,Dog,Pig,Cow,Sheep) ELISA=1:5000-10000
<b>Applications</b>	not yet tested in other applications. optimal dilutions/concentrations should be determined by the end user.
<b>Cellular localization</b>	Secretory protein
<b>Form</b>	Liquid
<b>Concentration</b>	1mg/ml
<b>immunogen</b>	KLH conjugated synthetic peptide derived from human IL-1 Alpha Propeptide: 21-113/270
<b>Lsotype</b>	IgG
<b>Purification</b>	affinity purified by Protein A
<b>Buffer Solution</b>	(predicted:Human,Mouse,Rat,Dog,Pig,Cow,Sheep)1M TBS(pH7.4) with 1% BSA, (predicted:Human,Mouse,Rat,Dog,Pig,Cow,Sheep)3% Proclin300 and 50% Glycerol.
<b>Storage</b>	Shipped at 4°C. Store at -20 °C for one year. Avoid repeated freeze/thaw cycles.
<b>Attention</b>	This product as supplied is intended for research use only, not for use in human, therapeutic or diagnostic applications.
<b>PubMed</b>	<a href="#">PubMed</a>
<b>Product Detail</b>	Interleukins (ILs) are a large group of cytokines that are produced mainly by leukocytes, although some are produced by certain phagocytes and auxiliary

---

cells. Each IL acts on a specific, limited group of cells through a receptor specific for that IL. Interleukin 1 (IL1), originally known as lymphocyte activating factor (LAF), activates T cells and lymphocytes, which then proliferate and secrete interleukin 2. IL1 is primarily released from stimulated macrophages and monocytes, but also is released from several other cell types and is thought to play a key role in inflammatory and immune responses. The two closely related agents, interleukin 1 alpha (IL1 alpha) and interleukin 1 beta (IL1 beta) bind to the same cell surface receptor, elicit nearly identical biological responses and share 25% homology in their amino acid sequence.

**Function:**

Produced by activated macrophages, IL-1 stimulates thymocyte proliferation by inducing IL-2 release, B-cell maturation and proliferation, and fibroblast growth factor activity. IL-1 proteins are involved in the inflammatory response, being identified as endogenous pyrogens, and are reported to stimulate the release of prostaglandin and collagenase from synovial cells.

**Subunit:**

Monomer.

**Subcellular Location:**

Secreted. Note=The lack of a specific hydrophobic segment in the precursor sequence suggests that IL-1 is released by damaged cells or is secreted by a mechanism differing from that used for other secretory proteins.

**Similarity:**

Belongs to the IL-1 family.

**SWISS:**

P01583

**Gene ID:**

3552

**Database links:**

[Entrez Gene: 3552](#) Human

[Entrez Gene: 16175](#) Mouse

[Omim: 147760](#) Human

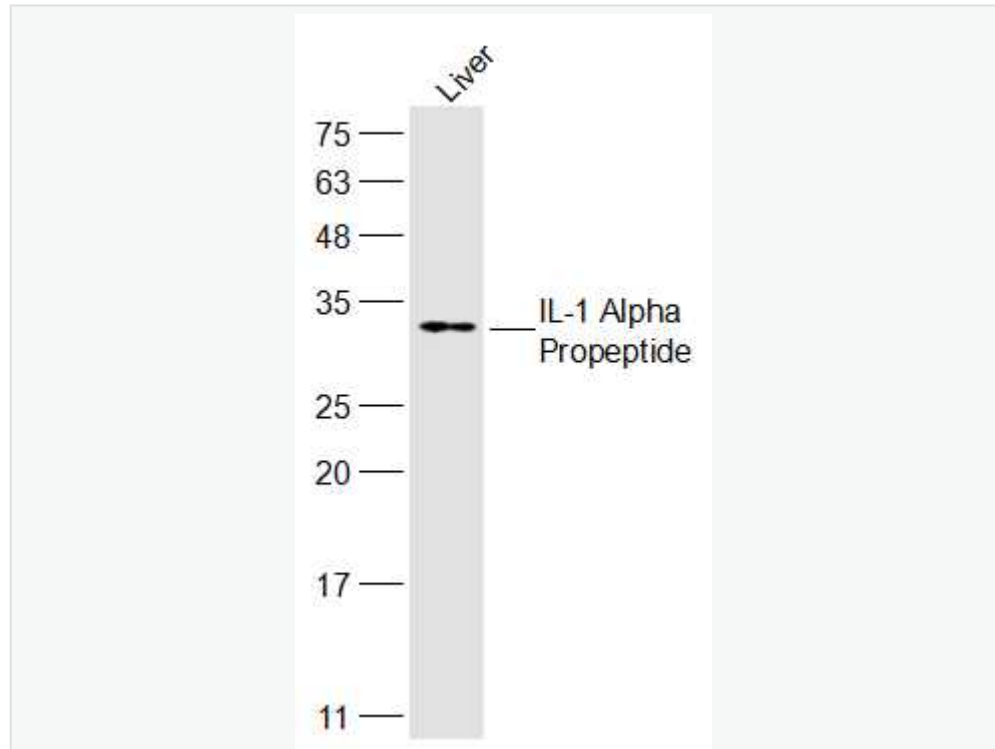
[SwissProt: P01583](#) Human

[SwissProt: P01582](#) Mouse

[Unigene: 1722](#) Human

[Unigene: 15534](#) Mouse

**Product Picture**



Sample:

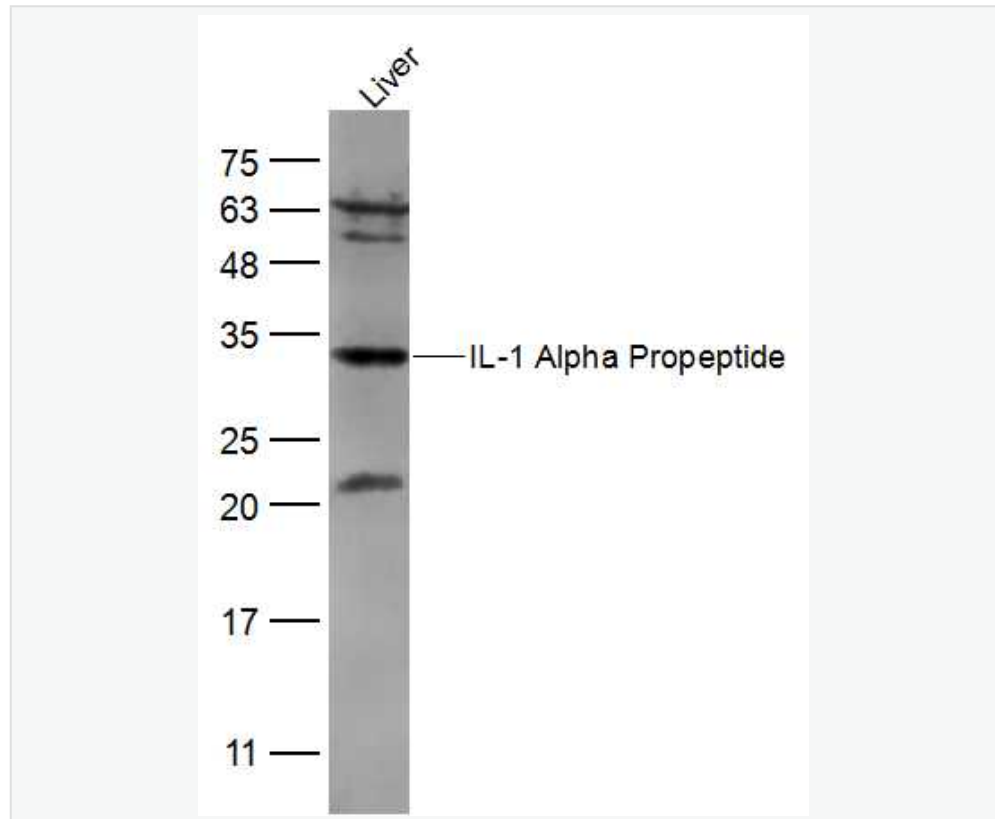
Liver(Rat) Cell Lysate at 40 ug

Primary: Anti-IL-1 Alpha Propeptide (SL10540R) at 1/300 dilution

Secondary: IRDye800CW Goat Anti-Rabbit IgG at 1/20000 dilution

Predicted band size: 30 kD

Observed band size: 30 kD



Sample:

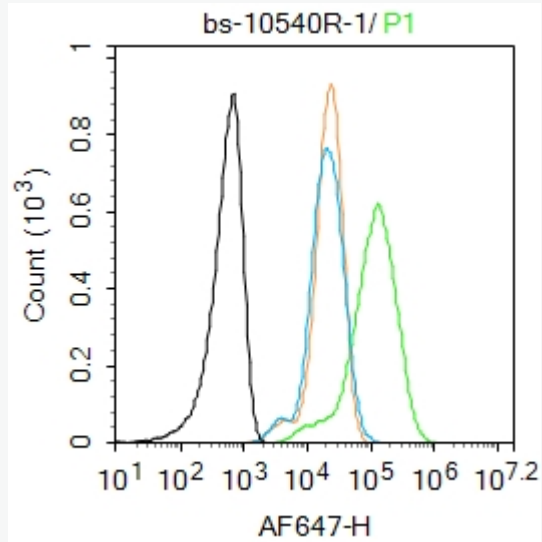
Liver (Mouse) Lysate at 40 ug

Primary: Anti-IL-1 Alpha Propeptide (SL10540R) at 1/300 dilution

Secondary: IRDye800CW Goat Anti-Rabbit IgG at 1/20000 dilution

Predicted band size: 30 kD

Observed band size: 32 kD



Blank control: Raw264.7.

Primary Antibody (green line): Rabbit Anti-IL-1 Alpha Propeptide antibody (SL10540R)

Dilution: 1 $\mu$ g /10<sup>6</sup> cells;

Isotype Control Antibody (orange line): Rabbit IgG .

Secondary Antibody : Goat anti-rabbit IgG-AF647

Dilution: 1 $\mu$ g /test.

Protocol

The cells were fixed with 4% PFA (10min at room temperature)and then permeabilized with 0.1% PBST for 20 min at room temperature.The cells were then incubated in 5%BSA to block non-specific protein-protein interactions for 30 min at room temperature .Cells stained with Primary Antibody for 30 min at room temperature. The secondary antibody used for 40 min at room temperature. Acquisition of 20,000 events was



SunLong Biotech Co.,LTD  
Tel: 0086-571-56623320 Fax:0086-571-56623318  
E-mail:sales@sunlongbiotech.com  
www.sunlongbiotech.com

---

performed.