



## Rabbit Anti-CD200R antibody

SL10521R

**Product Name** CD200R

**Chinese Name** CD200 受体抗体

**Alias** CD 200R; CD200 cell surface glycoprotein receptor; CD200 receptor 1; Cd200r1; Cell surface glycoprotein CD200 receptor 1; Cell surface glycoprotein OX2 receptor 1; Cell surface glycoprotein OX2 receptor; cell surface glycoprotein receptor CD200; CRTR 2; CRTR2; HCRTR2; MO2R1\_HUMAN; MOX2 receptor; MOX2R; OX2R.

**Research Area** Cell biology immunology The cell membrane 受体

**Immunogen Species** Rabbit

**Clonality** Polyclonal

**React Species** Human,  
WB=1:500-2000,IHC-P=1:100-500,IHC-F=1:100-500,IF=1:100-500,ELISA=1:5000-10000

**Applications** (Paraffin sections need antigen repair)  
not yet tested in other applications.  
optimal dilutions/concentrations should be determined by the end user.

**Theoretical molecular weight** 33kDa

**Cellular localization** The cell membrane Secretory protein

**Form** Liquid

**Concentration** 1mg/ml

**immunogen** KLH conjugated synthetic peptide derived from human CD200R: 201-300/325  
<Extracellular>

**Lsotype** IgG

**Purification** affinity purified by Protein A

**Buffer Solution** 1M TBS(pH7.4) with 1% BSA, 3% Proclin300 and 50% Glycerol.

**Storage** Shipped at 4°C. Store at -20 °C for one year. Avoid repeated freeze/thaw cycles.

**Attention** This product as supplied is intended for research use only, not for use in human, therapeutic

or diagnostic applications.

**PubMed**

[PubMed](#)

This gene encodes a receptor for the OX-2 membrane glycoprotein. Both the receptor and substrate are cell surface glycoproteins containing two immunoglobulin-like domains. This receptor is restricted to the surfaces of myeloid lineage cells and the receptor-substrate interaction may function as a myeloid downregulatory signal. Mouse studies of a related gene suggest that this interaction may control myeloid function in a tissue-specific manner. Alternative splicing of this gene results in multiple transcript variants. [provided by RefSeq, Jul 2008]

**Function:**

Receptor for the CD200/OX2 cell surface glycoprotein. Also binds to HHV-8 K14 viral CD200 homolog with identical affinity and kinetics as the host CD200.

**Subcellular Location:**

Secreted and Cell membrane.

**Tissue Specificity:**

Expressed in granulocytes, monocytes, most T cells, neutrophils, basophils and a subset of NK, NKT and B cells (at protein level). Expressed in bone marrow, lymph nodes, spleen, lung, liver, spinal cord, kidney. Expressed in monocyte-derived dendritic and mast cells.

**Product  
Detail**

**Post-translational modifications:**

The mature form of isoform 2 and/or isoform 4 starts at sequence position 27 of the corresponding isoform.

**Similarity:**

Belongs to the CD200R family.

Contains 1 Ig-like C2-type (immunoglobulin-like) domain.

Contains 1 Ig-like V-type (immunoglobulin-like) domain.

**SWISS:**

Q8TD46

**Gene ID:**

131450

**Database links:**

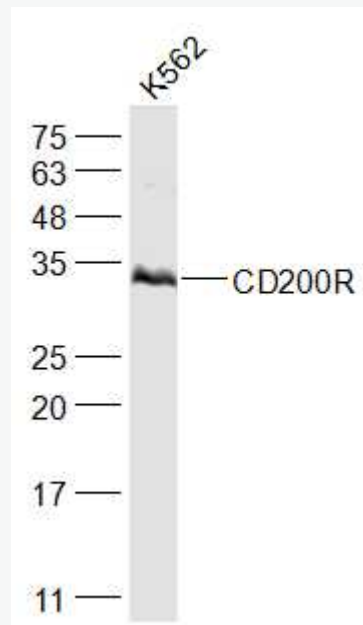
[Entrez Gene: 131450](#) Human

[Omim: 607546](#) Human

[SwissProt: Q8TD46](#) Human

[Unigene: 309158](#) Human

**Product  
Picture**



Sample:

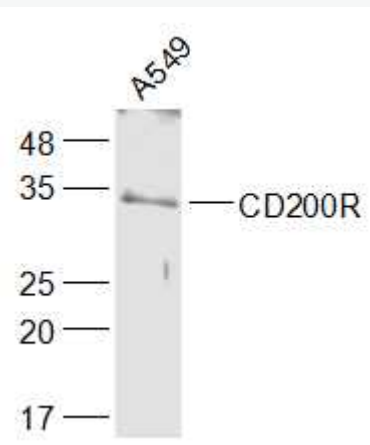
K562(Human) Cell Lysate at 30 ug

Primary: Anti-CD200R (SL10521R) at 1/1000 dilution

Secondary: IRDye800CW Goat Anti-Rabbit IgG at 1/20000 dilution

Predicted band size: 33 kD

Observed band size: 33 kD



Sample:

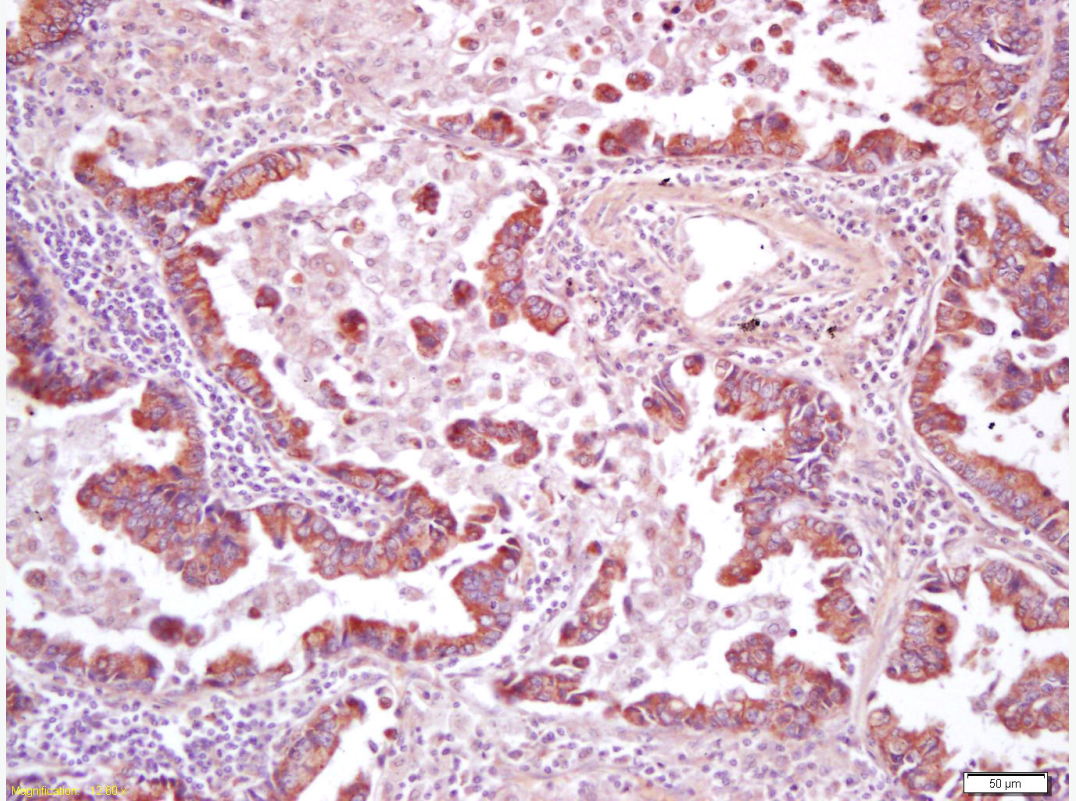
A549(Human) Cell Lysate at 30 ug

Primary: Anti-CD200R (SL10521R) at 1/1000 dilution

Secondary: IRDye800CW Goat Anti-Rabbit IgG at 1/20000 dilution

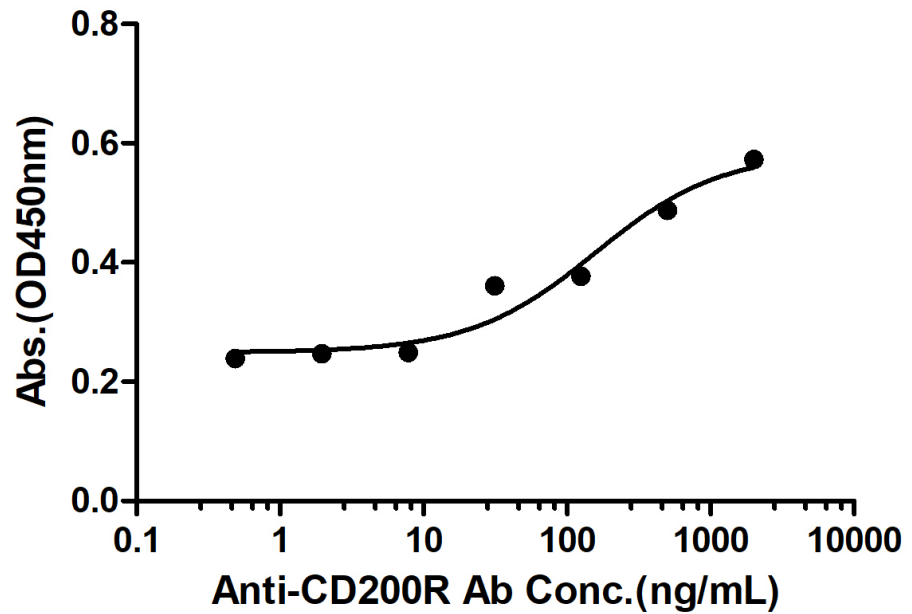
Predicted band size: 33 kD

Observed band size: 33 kD



Tissue/cell: human lung carcinoma; 4% Paraformaldehyde-fixed and paraffin-embedded;  
Antigen retrieval: citrate buffer ( 1M, pH 6.0 ), Boiling bathing for 15min; Block  
endogenous peroxidase by 3% Hydrogen peroxide for 30min; Blocking buffer (normal  
goat serum,C-0005) at 37°C for 20 min;  
Incubation: Anti-CD200R Polyclonal Antibody, Unconjugated(SL10521R) 1:200,  
overnight at 4°C, followed by conjugation to the secondary antibody(SP-0023) and  
DAB(C-0010) staining

### Rabbit Anti-CD200R Antibody Bind with Mycobacterium bovis protein



Measured by its binding ability in a indirect ELISA. Immobilized Mycobacterium bovis protein (Cat. SL4622P) at 2  $\mu\text{g/mL}$  (100  $\mu\text{L/well}$ ) can bind Rabbit Anti-CD200R Antibody, the EC50 is 158 ng/mL.