

## Rabbit Anti-TLR2 antibody

SL10472R

**Product Name** TLR2

**Chinese Name** Toll 样受体 2 (CD282) 抗体

**Alias** Toll-like receptor 2; Toll like receptor 2; Toll like receptor 2 precursor; Toll-like receptor 2; TLR 2; TLR2; TLR-2; Toll/interleukin-1 receptor-like protein 4; CD282 antigen; CD282; TIL 4; TIL4; TLR2\_HUMAN; Toll/interleukin 1 receptor like 4; Toll/interleukin 1 receptor like protein 4; Toll/interleukin receptor like protein 4.

**Research Area** Cardiovascular immunology Signal transduction transcriptional regulatory factor

**Immunogen Species** Rabbit

**Clonality** Polyclonal

**React Species** Human, Mouse, (predicted: Rat, Dog, )

**Applications** WB=1:500-2000,Flow-Cyt=1ug/Test (Paraffin sections need antigen repair )  
not yet tested in other applications.  
optimal dilutions/concentrations should be determined by the end user.

**Theoretical molecular weight** 84kDa

**Cellular localization** The cell membrane

**Form** Liquid

**Concentration** 1mg/ml

**immunogen** KLH conjugated synthetic peptide derived from human TLR2: 301-400/784  
<Extracellular>

**Lsotype** IgG

**Purification** affinity purified by Protein A

**Buffer Solution** 1M TBS(pH7.4) with 1% BSA, 3% Proclin300 and 50% Glycerol.

**Storage** Shipped at 4°C. Store at -20 °C for one year. Avoid repeated freeze/thaw cycles.

**Attention** This product as supplied is intended for research use only, not for use in human, therapeutic or diagnostic applications.

**PubMed**

[PubMed](#)

The protein encoded by this gene is a member of the Toll-like receptor (TLR) family which plays a fundamental role in pathogen recognition and activation of innate immunity. TLRs are highly conserved from *Drosophila* to humans and share structural and functional similarities. They recognize pathogen-associated molecular patterns (PAMPs) that are expressed on infectious agents, and mediate the production of cytokines necessary for the development of effective immunity. The various TLRs exhibit different patterns of expression. This gene is expressed most abundantly in peripheral blood leukocytes, and mediates host response to Gram-positive bacteria and yeast via stimulation of NF-kappaB. [provided by RefSeq, Jul 2008].

**Function:**

Cooperates with LY96 to mediate the innate immune response to bacterial lipoproteins and other microbial cell wall components. Cooperates with TLR1 to mediate the innate immune response to bacterial lipoproteins or lipopeptides. Acts via MYD88 and TRAF6, leading to NF-kappa-B activation, cytokine secretion and the inflammatory response. May also promote apoptosis in response to lipoproteins. Recognizes mycoplasmal macrophage-activating lipopeptide-2kD (MALP-2), soluble tuberculosis factor (STF), phenol-soluble modulins (PSM) and *B.burgdorferi* outer surface protein A lipoprotein (OspA-L) cooperatively with TLR6.

**Product Detail**

**Subunit:**

Interacts with LY96, TLR1 and TLR6 (via extracellular domain). Binds MYD88 (via TIR domain). Interacts with TICAM1. Ligand binding induces the formation of a heterodimer with TLR1. Interacts with CNPY3.

**Subcellular Location:**

Membrane; Single-pass type I membrane protein.

**Tissue Specificity:**

Highly expressed in peripheral blood leukocytes, in particular in monocytes, in bone marrow, lymph node and in spleen. Also detected in lung and in fetal liver. Levels are low in other tissues.

**Post-translational modifications:**

Glycosylation of Asn-442 is critical for secretion of the N-terminal ectodomain of TLR2.

**Similarity:**

Belongs to the Toll-like receptor family.  
Contains 14 LRR (leucine-rich) repeats.  
Contains 1 TIR domain.

**SWISS:**

O60603

**Gene ID:**  
7097

**Database links:**

[Entrez Gene: 7097](#) Human

[Entrez Gene: 24088](#) Mouse

[Entrez Gene: 310553](#) Rat

[Omim: 603028](#) Human

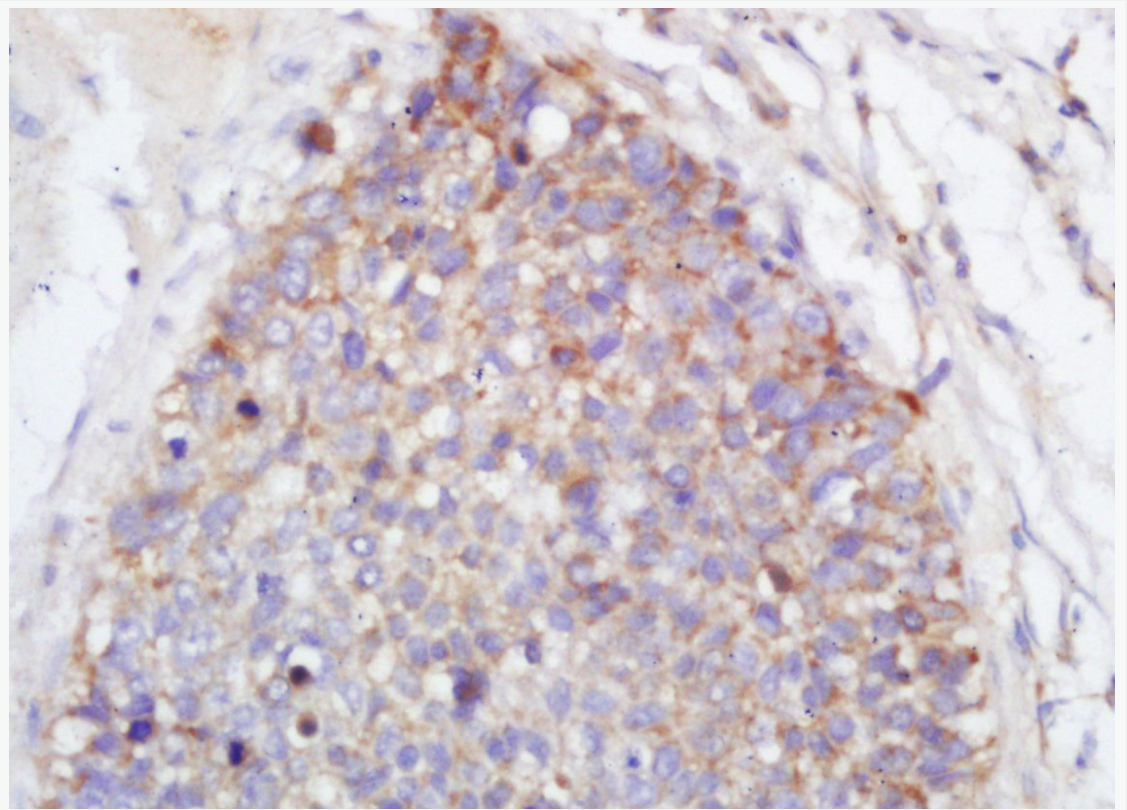
[SwissProt: O60603](#) Human

[SwissProt: Q9QUN7](#) Mouse

[Unigene: 519033](#) Human

[Unigene: 87596](#) Mouse

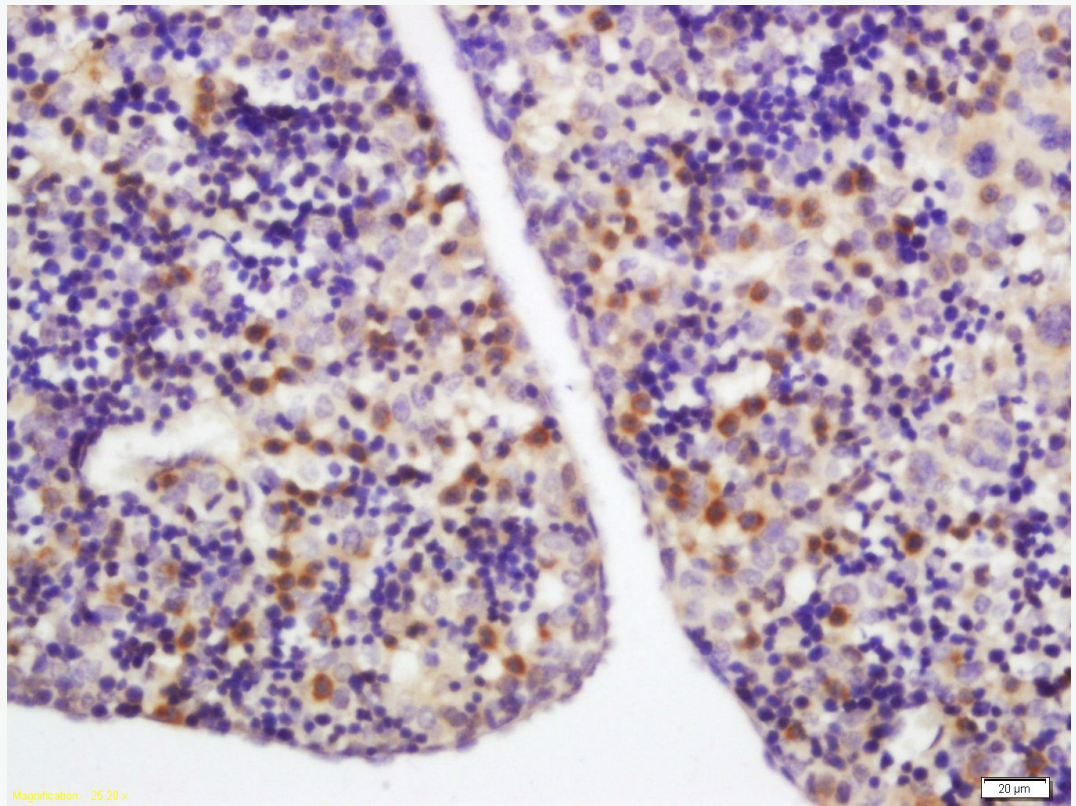
**Product  
Picture**



Tissue/cell: human lung carcinoma; 4% Paraformaldehyde-fixed and paraffin-embedded;

Antigen retrieval: citrate buffer ( 1M, pH 6.0 ), Boiling bathing for 15min; Block endogenous peroxidase by 3% Hydrogen peroxide for 30min; Blocking buffer (normal goat serum,C-0005) at 37°C for 20 min;

Incubation: Anti-TLR2 Polyclonal Antibody, Unconjugated(SL10472R) 1:200, overnight at 4°C, followed by conjugation to the secondary antibody(SP-0023) and DAB(C-0010) staining



Tissue/cell: mouse embryo tissue; 4% Paraformaldehyde-fixed and paraffin-embedded;

Antigen retrieval: citrate buffer ( 1M, pH 6.0 ), Boiling bathing for 15min; Block endogenous peroxidase by 3% Hydrogen peroxide for 30min; Blocking buffer (normal goat serum,C-0005) at 37°C for 20 min;

Incubation: Anti-TLR2 Polyclonal Antibody, Unconjugated(SL10472R) 1:200, overnight at 4°C, followed by conjugation to the secondary antibody(SP-0023) and DAB(C-0010) staining