

Rabbit Anti-DYNC1I1 antibody

SL10470R

Product Name DYNC1I1

Chinese Name 胞浆动力蛋白中间链 1 抗体

Alias dynein, cytoplasmic, intermediate polypeptide 1; cytoplasmic dynein 1 intermediate chain 1; DH IC-1; dynein intermediate chain 1, cytosolic; cytoplasmic dynein intermediate chain 1; DC1I1_HUMAN; DYNC1I1; DNC11; DNC1C1; Dynein cytoplasmic intermediate polypeptide 1.

Research Area Cell biology Neurobiology Signal transduction Cell adhesion molecule Cytoskeleton

Immunogen Species Rabbit

Clonality Polyclonal

React Species Human,Rat (predicted:Mouse,Chicken,Pig,Cow,Horse,Rabbit,Sheep)

Applications IHC-P=1:100-500,IHC-F=1:100-500,IF=1:100-500,Flow-Cyt=1 μ g/Test (Paraffin sections need antigen repair)
not yet tested in other applications.
optimal dilutions/concentrations should be determined by the end user.

Theoretical molecular weight 71kDa

Cellular localization cytoplasmic

Form Liquid

Concentration 1mg/ml

immunogen KLH conjugated synthetic peptide derived from human DYNC1I1: 1-100/645

Lsotype IgG

Purification affinity purified by Protein A

Buffer Solution 1M TBS(pH7.4) with 1% BSA, 3% Proclin300 and 50% Glycerol.

Storage Shipped at 4°C. Store at -20 °C for one year. Avoid repeated freeze/thaw cycles.

Attention This product as supplied is intended for research use only, not for use in human, therapeutic or diagnostic applications.

PubMed

[PubMed](#)

The inner- and outer-arm dyneins, which bridge between the doublet microtubules in axonemes, are the force-generating proteins responsible for the sliding movement in axonemes. The intermediate and light chains, thought to form the base of the dynein arm, help mediate attachment and may also participate in regulating dynein activity. This gene encodes an intermediate chain dynein, belonging to the large family of motor proteins. Mutations in this gene result in abnormal ciliary ultrastructure and function associated with primary ciliary dyskinesia (PCD) and Kartagener syndrome. [provided by RefSeq, Jul 2008].

Function:

Acts as one of several non-catalytic accessory components of the cytoplasmic dynein 1 complex that are thought to be involved in linking dynein to cargos and to adapter proteins that regulate dynein function. Cytoplasmic dynein 1 acts as a motor for the intracellular retrograde motility of vesicles and organelles along microtubules. The intermediate chains mediate the binding of dynein to dynactin via its 150 kDa component (p150-glued) DCNT1. May play a role in mediating the interaction of cytoplasmic dynein with membranous organelles and kinetochores.

Subunit:

Homodimer (By similarity). The cytoplasmic dynein 1 complex consists of two catalytic heavy chains (HCs) and a number of non-catalytic subunits presented by intermediate chains (ICs), light intermediate chains (LICs) and light chains (LCs); the composition seems to vary in respect to the IC, LIC and LC composition. The heavy chain homodimer serves as a scaffold for the probable homodimeric assembly of the respective non-catalytic subunits. The ICs and LICs bind directly to the HC dimer and the LCs assemble on the IC dimer. Interacts with DYNC1H1. Interacts with DYNLT1 and DYNLT3. Interacts with DCNT1.

Subcellular Location:

Cytoplasm. Chromosome, centromere, kinetochore. Cytoplasm, cytoskeleton, spindle pole.

Similarity:

Belongs to the dynein intermediate chain family.
Contains 7 WD repeats.

SWISS:

O14576

Gene ID:

27019

Database links:

**Product
Detail**

[Entrez Gene: 27019](#) Human

[Entrez Gene: 68922](#) Mouse

[Entrez Gene: 500442](#) Rat

[Omim: 603772](#) Human

[SwissProt: Q9UI46](#) Human

[SwissProt: Q8C0M8](#) Mouse

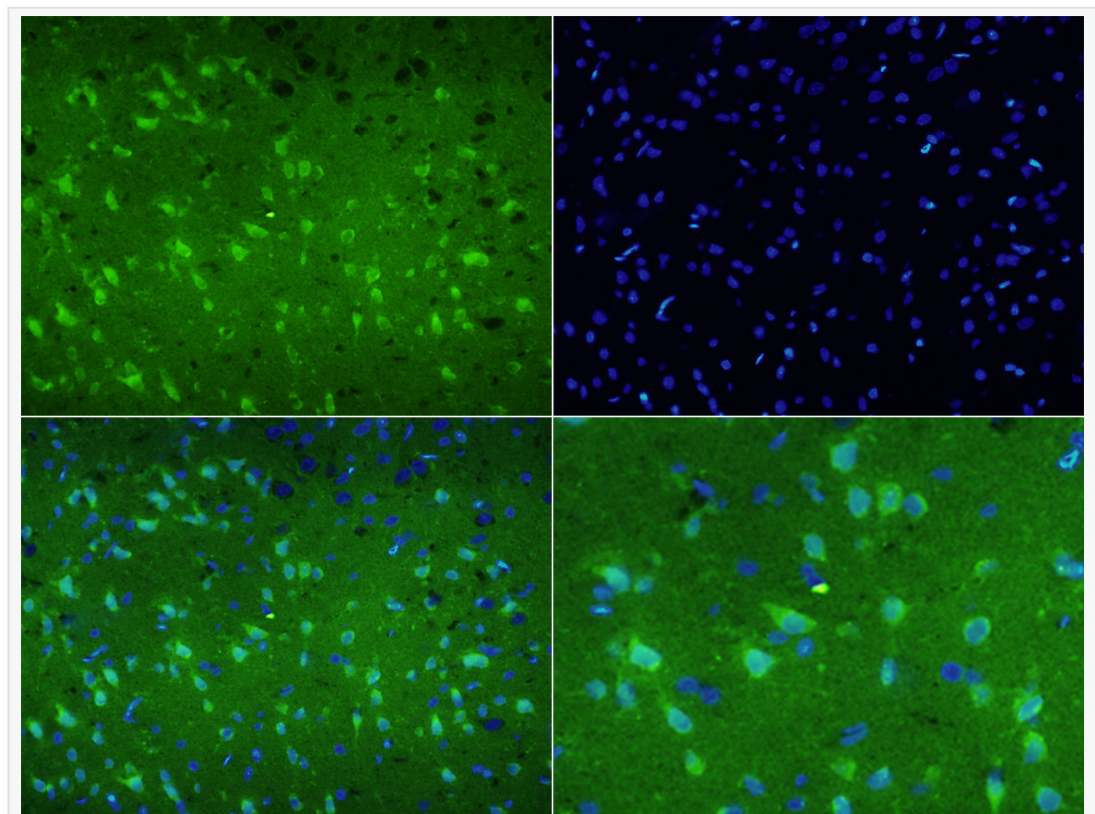
[SwissProt: Q5XIL8](#) Rat

[Unigene: 112667](#) Human

[Unigene: 79127](#) Mouse

[Unigene: 93980](#) Rat

**Product
Picture**



Tissue/cell: rat brain tissue;4% Paraformaldehyde-fixed and paraffin-embedded;

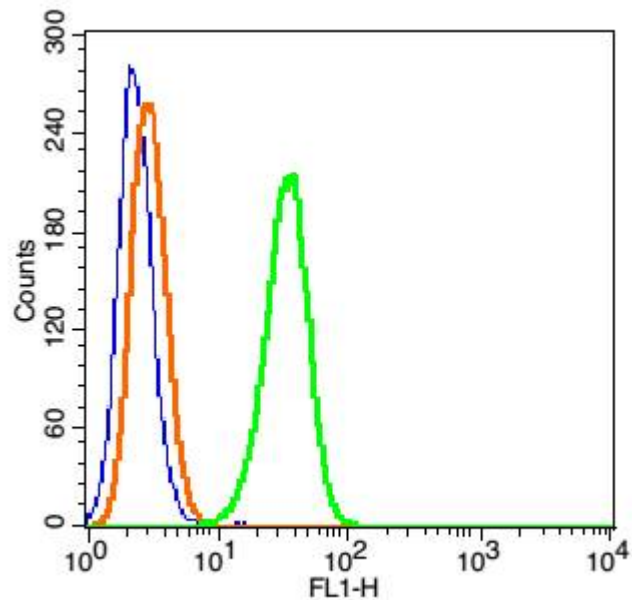
Antigen retrieval: citrate buffer (1M, pH 6.0), Boiling bathing for 15min;

Blocking buffer (normal goat serum,C-0005) at 37°C for 20 min;

Incubation: Anti-DYNC1H1 Polyclonal Antibody, FITC

conjugated(SL10470R-FITC) 1:200, 60 minutes at 37°C.

DAPI(5ug/ml,blue,C-0033) was used to stain the cell nuclei



Blank control(blue): Hela(fixed with 2% paraformaldehyde (10 min) and then permeabilized with ice-cold 90% methanol for 30 min on ice).

Primary Antibody: Rabbit Anti- DYNC1H1/FITC Conjugated antibody (SL10470R /FITC), Dilution: 1μg in 100 μL 1X PBS containing 0.5% BSA;

Isotype Control Antibody: Rabbit IgG/FITC(orange) ,used under the same conditions.



SunLong Biotech Co.,LTD
Tel: 0086-571-56623320 Fax:0086-571-56623318
E-mail:sales@sunlongbiotech.com
www.sunlongbiotech.com
