

Rabbit Anti-Sema3A antibody

SL10468R

Product Name	Sema3A
Chinese Name	臂板蛋白 3A 抗体
Alias	Semaphorin 3A; Semaphorin-3A; Semaphorin-3A precursor; Semaphorin3A; SemD; Sema 3A; SEM3A_MOUSE; Coll 1; Coll1; Hsema I; Hsema III; sema domain immunoglobulin domain (Ig) short basic domain secreted (semaphorin) 3A; Sema III; SEMA1; SEMA1-PEN; SEMA3A; SEMAD; SEMAIII; SEMAL; Semaphorin III; Semaphorin like growth cone guidance homolog of chick collapsin; Semaphorin III; Semaphorin-D; Sema D.
Research Area	Neurobiology
Immunogen Species	Rabbit
Clonality	Polyclonal
React Species	Mouse,Rat (predicted:Human,Chicken,Dog,Pig,Horse,Rabbit,Sheep) WB=1:500-2000
Applications	not yet tested in other applications. optimal dilutions/concentrations should be determined by the end user.
Theoretical molecular weight	86kDa
Cellular localization	Secretory protein
Form	Liquid
Concentration	1mg/ml
immunogen	KLH conjugated synthetic peptide derived from human Sema3A: 111-210/772
Lsotype	IgG
Purification	affinity purified by Protein A
Buffer Solution	1M TBS(pH7.4) with 1% BSA, 3% Proclin300 and 50% Glycerol.
Storage	Shipped at 4°C. Store at -20 °C for one year. Avoid repeated freeze/thaw cycles.
Attention	This product as supplied is intended for research use only, not for use in human, therapeutic or diagnostic applications.

PubMed

[PubMed](#)

This gene is a member of the semaphorin family and encodes a protein with an Ig-like C2-type (immunoglobulin-like) domain, a PSI domain and a Sema domain. This secreted protein can function as either a chemorepulsive agent, inhibiting axonal outgrowth, or as a chemoattractive agent, stimulating the growth of apical dendrites. In both cases, the protein is vital for normal neuronal pattern development. Increased expression of this protein is associated with schizophrenia and is seen in a variety of human tumor cell lines. Also, aberrant release of this protein is associated with the progression of Alzheimer's disease.

Function:

Plays a role in growth cones guidance. May function to pattern sensory projections by selectively repelling axons that normally terminate dorsally. Involved in the development of the olfactory system and in neuronal control of puberty.

Subunit:

Interacts with PXND1.

Subcellular Location:

Secreted.

Product Detail

Tissue Specificity:

Expressed at relatively high levels in brain and muscle, moderate levels in lung, bursa, and heart and virtually absent in liver. Collapsin-1, -2, -3, and -5 bind to overlapping but distinct axon tracts.

Similarity:

Belongs to the semaphorin family.

Contains 1 Ig-like C2-type (immunoglobulin-like) domain.

Contains 1 PSI domain.

Contains 1 Sema domain.

SWISS:

Q14563

Gene ID:

10371

Database links:

[Entrez Gene: 10371](#) Human

[Entrez Gene: 20346](#) Mouse

[Entrez Gene: 29751](#) Rat

[Omim: 603961](#) Human

[SwissProt: Q14563](#) Human

[SwissProt: O08665](#) Mouse

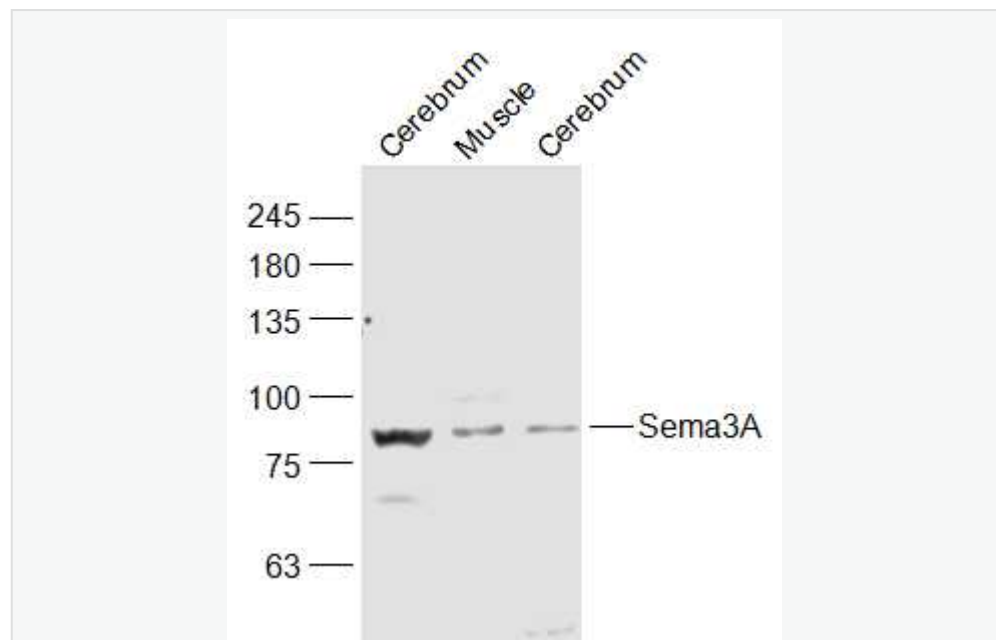
[SwissProt: Q5BL08](#) Mouse

[SwissProt: Q63548](#) Rat

[Unigene: 252451](#) Human

[Unigene: 44410](#) Rat

Product Picture



Sample:

Cerebrum (Mouse) Lysate at 40 ug

Muscle (Mouse) Lysate at 40 ug

Cerebrum (Rat) Lysate at 40 ug

Primary: Anti-Sema3A (SL10468R) at 1/1000 dilution



SunLong Biotech Co.,LTD

Tel: 0086-571-56623320 Fax:0086-571-56623318

E-mail:sales@sunlongbiotech.com

www.sunlongbiotech.com

Secondary: IRDye800CW Goat Anti-Rabbit IgG at 1/20000 dilution

Predicted band size: 86 kD

Observed band size: 86 kD