

## Rabbit Anti-RHOG antibody

SL10466R

<b>Product Name</b>	RHOG
<b>Chinese Name</b>	RHOG 抗体
<b>Alias</b>	RHOG; RHO G; ARHG; rho-related GTP-binding protein RhoG precursor; rho-related GTP-binding protein RhoG; ras homolog gene family, member G (rho G).
<b>Research Area</b>	transcriptional regulatory factor
<b>Immunogen Species</b>	Rabbit
<b>Clonality</b>	Polyclonal
<b>React Species</b>	Human, (predicted: Mouse, Rat, )
<b>Applications</b>	Flow-Cyt=0.2ug/test (Paraffin sections need antigen repair ) not yet tested in other applications. optimal dilutions/concentrations should be determined by the end user.
<b>Theoretical molecular weight</b>	21kDa
<b>Cellular localization</b>	The cell membrane
<b>Form</b>	Liquid
<b>Concentration</b>	1mg/ml
<b>immunogen</b>	KLH conjugated synthetic peptide derived from human RHOG: 61-150/191
<b>Lsotype</b>	IgG
<b>Purification</b>	affinity purified by Protein A
<b>Buffer Solution</b>	1M TBS(pH7.4) with 1% BSA, 3% Proclin300 and 50% Glycerol.
<b>Storage</b>	Shipped at 4°C. Store at -20 °C for one year. Avoid repeated freeze/thaw cycles.
<b>Attention</b>	This product as supplied is intended for research use only, not for use in human, therapeutic or diagnostic applications.
<b>PubMed</b>	<a href="#">PubMed</a>
<b>Product Detail</b>	This gene encodes a member of the Rho family of small GTPases, which cycle between inactive GDP-bound and active GTP-bound states and function as molecular switches in signal transduction cascades. Rho proteins promote

reorganization of the actin cytoskeleton and regulate cell shape, attachment, and motility. The encoded protein facilitates translocation of a functional guanine nucleotide exchange factor (GEF) complex from the cytoplasm to the plasma membrane where ras-related C3 botulinum toxin substrate 1 is activated to promote lamellipodium formation and cell migration. Two related pseudogene have been identified on chromosomes 20 and X. [provided by RefSeq, Aug 2011].

**SWISS:**  
P84095

**Gene ID:**  
391

**Database links:**

[Entrez Gene: 391](#) Human

[Entrez Gene: 56212](#) Mouse

[Entrez Gene: 308875](#) Rat

[Omim: 179505](#) Human

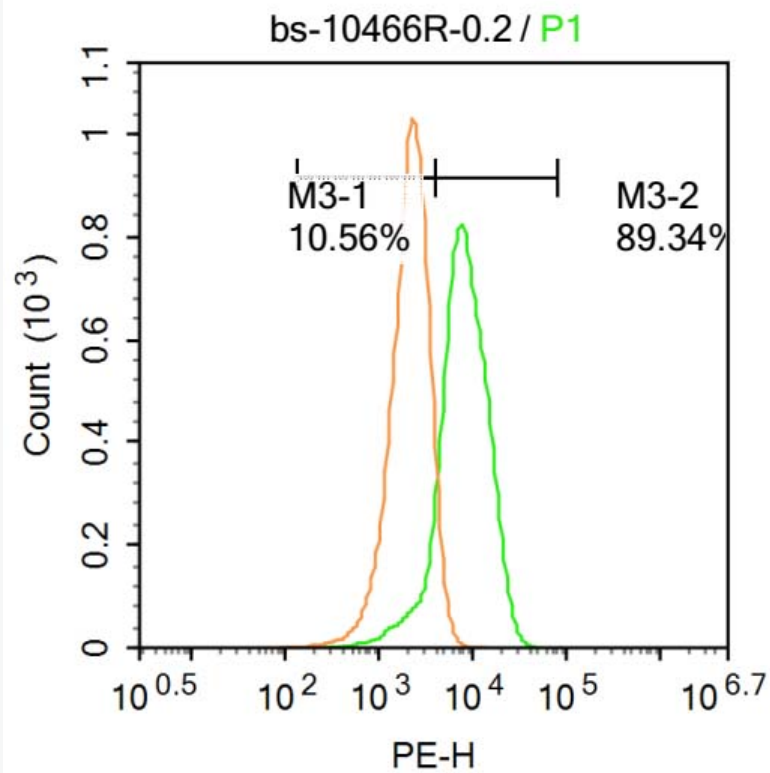
[SwissProt: P84095](#) Human

[SwissProt: P84096](#) Mouse

[Unigene: 501728](#) Human

[Unigene: 259795](#) Mouse

[Unigene: 11976](#) Rat



**Product Picture**

Blank control:Molt-4.

Primary Antibody (green line): Rabbit Anti-RHOG antibody (SL10466R)

Dilution: 0.2 $\mu$ g /10<sup>6</sup> cells;

Isotype Control Antibody (orange line): Rabbit IgG .

Secondary Antibody : Goat anti-rabbit IgG-PE

Dilution: 0.2 $\mu$ g /test.

Protocol

The cells were incubated in 5%BSA to block non-specific protein-protein interactions for 30 min at room temperature .Cells stained with Primary Antibody for 30 min at room temperature. The secondary antibody used



for 40 min at room temperature. Acquisition of 20,000 events was performed.