

## Rabbit Anti-ADRA1B antibody

SL10465R

<b>Product Name</b>	ADRA1B
<b>Chinese Name</b>	alpha 1 肾上腺素能受体 B 抗体
<b>Alias</b>	ADA1B_HUMAN; ADRA1; ALPHA1BAR; Alpha-1B adrenergic receptor; Alpha-1B adrenoreceptor; Alpha-1B adrenoceptor; alpha-1B-adrenergic receptor; adrenergic, alpha-1B-, receptor.
<b>Research Area</b>	Neurobiology Channel protein G protein-coupled receptor
<b>Immunogen Species</b>	Rabbit
<b>Clonality</b>	Polyclonal
<b>React Species</b>	Mouse (predicted:Human,Rat,Chicken,Dog,Pig,Cow,Horse,Rabbit,Sheep,GuineaPig) WB=1:500-2000 (Paraffin sections need antigen repair)
<b>Applications</b>	not yet tested in other applications. optimal dilutions/concentrations should be determined by the end user.
<b>Theoretical molecular weight</b>	57kDa
<b>Cellular localization</b>	The cell membrane
<b>Form</b>	Liquid
<b>Concentration</b>	1mg/ml
<b>immunogen</b>	KLH conjugated synthetic peptide derived from human ADRA1B: 1-100/520
<b>Lsotype</b>	IgG
<b>Purification</b>	affinity purified by Protein A
<b>Buffer Solution</b>	1M TBS(pH7.4) with 1% BSA, 3% Proclin300 and 50% Glycerol.
<b>Storage</b>	Shipped at 4°C. Store at -20 °C for one year. Avoid repeated freeze/thaw cycles.
<b>Attention</b>	This product as supplied is intended for research use only, not for use in human, therapeutic or diagnostic applications.
<b>PubMed</b>	<a href="#">PubMed</a>
<b>Product Detail</b>	Alpha-1-adrenergic receptors (alpha-1-ARs) are members of the G protein-coupled receptor superfamily. They activate mitogenic responses and

regulate growth and proliferation of many cells. There are 3 alpha-1-AR subtypes: alpha-1A, -1B and -1D, all of which signal through the Gq/11 family of G-proteins and different subtypes show different patterns of activation. This gene encodes alpha-1B-adrenergic receptor, which induces neoplastic transformation when transfected into NIH 3T3 fibroblasts and other cell lines. Thus, this normal cellular gene is identified as a protooncogene. This gene comprises 2 exons and a single large intron of at least 20 kb that interrupts the coding region. [provided by RefSeq, Jul 2008].

**Function:**

This alpha-adrenergic receptor mediates its action by association with G proteins that activate a phosphatidylinositol-calcium second messenger system. Its effect is mediated by G(q) and G(11) proteins. Nuclear ADRA1A-ADRA1B heterooligomers regulate phenylephrine (PE)-stimulated ERK signaling in cardiac myocytes.

**Subunit:**

Homo- and heterooligomer. Heterooligomerizes with ADRA1B homooligomers in cardiac myocytes.

**Subcellular Location:**

Nucleus membrane; Multi-pass membrane protein. Cell membrane; Multi-pass membrane protein. Note=Location at the nuclear membrane facilitates heterooligomerization and regulates ERK-mediated signaling in cardiac myocytes. signaling in cardiac myocytes. Colocalizes with GNAQ, PLCB1 as well as LAP2 at the nuclear membrane of cardiac myocytes.

**Similarity:**

Belongs to the G-protein coupled receptor 1 family. Adrenergic receptor subfamily. ADRA1B sub-subfamily.

**SWISS:**

P35368

**Gene ID:**

147

**Database links:**

[Entrez Gene: 147](#) Human

[Entrez Gene: 11548](#) Mouse

[Entrez Gene: 24173](#) Rat

[Omid: 104220](#) Human

[SwissProt: P35368](#) Human

[SwissProt: P97717](#) Mouse

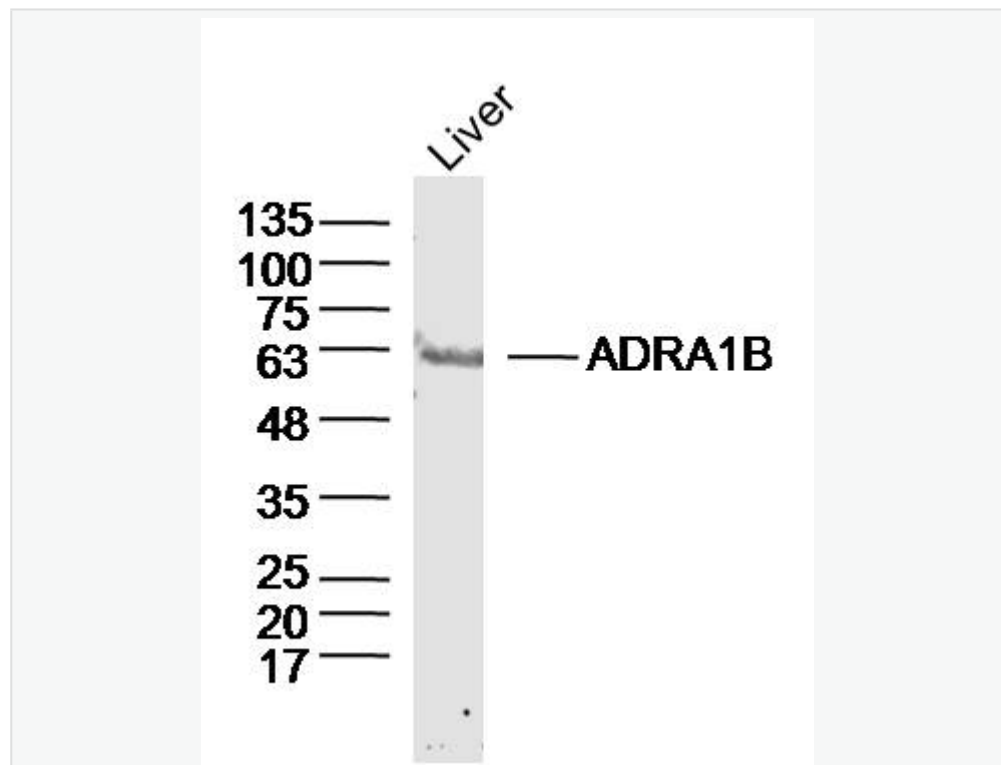
[SwissProt: P15823](#) Rat

[Unigene: 368632](#) Human

[Unigene: 39086](#) Mouse

[Unigene: 10032](#) Rat

**Product Picture**



Sample: Liver (Mouse) Lysate at 40 ug

Primary: Anti-ADRA1B (SL10465R) at 1/300 dilution

Secondary: IRDye800CW Goat Anti-Rabbit IgG at 1/20000 dilution

Predicted band size: 57kD



SunLong Biotech Co.,LTD  
Tel: 0086-571-56623320 Fax:0086-571-56623318  
E-mail:sales@sunlongbiotech.com  
www.sunlongbiotech.com

Observed band size: 60kD