

Rabbit Anti-Phospho-ITGB2 (Thr758)antibody

SL10462R

Product Name Phospho-ITGB2 (Thr758)

Chinese Name 磷酸化整合素 $\beta 2$ (CD18) 抗体

Alias Integrin beta-2; integrin subunit beta 2; LAD; CD18; MF17; MFI7; LCAMB; LFA-1; MAC-1; Cell surface adhesion glycoproteins LFA-1/CR3/p150,95 subunit beta; Complement receptor C3 subunit beta;

Product Type Phosphorylated anti

Research Area Tumour Cell biology Cell adhesion molecule Cell Surface Molecule

Immunogen Species Rabbit

Clonality Polyclonal

React Species Human, (predicted: Mouse, Rat, Chicken, Dog, Pig, Cow, Horse, Rabbit, Sheep, Guinea Pig,)

Applications IHC-P=1:100-500,IHC-F=1:100-500,IF=1:100-500,Flow-Cyt=1 μ g/Test (Paraffin sections need antigen repair)
not yet tested in other applications.
optimal dilutions/concentrations should be determined by the end user.

Theoretical molecular weight 82kDa

Cellular localization The cell membrane

Form Liquid

Concentration 1mg/ml

immunogen KLH conjugated synthesised phosphopeptide derived from human CD18 around the phosphorylation site of Thr758: SA(p-T)TT

Lsotype IgG

Purification affinity purified by Protein A

Buffer Solution 1M TBS(pH7.4) with 1% BSA, 3% Proclin300 and 50% Glycerol.

Storage	Shipped at 4°C. Store at -20 °C for one year. Avoid repeated freeze/thaw cycles.
Attention	This product as supplied is intended for research use only, not for use in human, therapeutic or diagnostic applications.
PubMed	PubMed This gene encodes an integrin beta chain, which combines with multiple different alpha chains to form different integrin heterodimers. Integrins are integral cell-surface proteins that participate in cell adhesion as well as cell-surface mediated signalling. The encoded protein plays an important role in immune response and defects in this gene cause leukocyte adhesion deficiency. Alternative splicing results in multiple transcript variants. [provided by RefSeq, Dec 2014]
Product Detail	<p>Function: Integrin alpha-L/beta-2 is a receptor for ICAM1, ICAM2, ICAM3 and ICAM4. Integrins alpha-M/beta-2 and alpha-X/beta-2 are receptors for the iC3b fragment of the third complement component and for fibrinogen. Integrin alpha-X/beta-2 recognizes the sequence G-P-R in fibrinogen alpha-chain. Integrin alpha-M/beta-2 recognizes P1 and P2 peptides of fibrinogen gamma chain. Integrin alpha-M/beta-2 is also a receptor for factor X. Integrin alpha-D/beta-2 is a receptor for ICAM3 and VCAM1. Triggers neutrophil transmigration during lung injury through PTK2B/PYK2-mediated activation.</p> <p>Subunit: Heterodimer of an alpha and a beta subunit. Beta-2 associates with either alpha-L, alpha-M, alpha-X or alpha-D. Interacts with FGR (By similarity). Interacts with COPS5 and RANBP9.</p> <p>Subcellular Location: Membrane; Single-pass type I membrane protein.</p> <p>Post-translational modifications: Both Ser-745 and Ser-756 become phosphorylated when T-cells are exposed to phorbol esters. Phosphorylation on Thr-758 (but not on Ser-756) allows interaction with 14-3-3 proteins.</p> <p>DISEASE: Leukocyte adhesion deficiency 1 (LAD1) [MIM:116920]: LAD1 patients have recurrent bacterial infections and their leukocytes are deficient in a wide range of adhesion-dependent functions. Note=The disease is caused by mutations affecting the gene represented in this entry.</p> <p>Similarity: Belongs to the integrin beta chain family. Contains 1 VWFA domain.</p>

SWISS:
P05107

Gene ID:
3689

Database links:

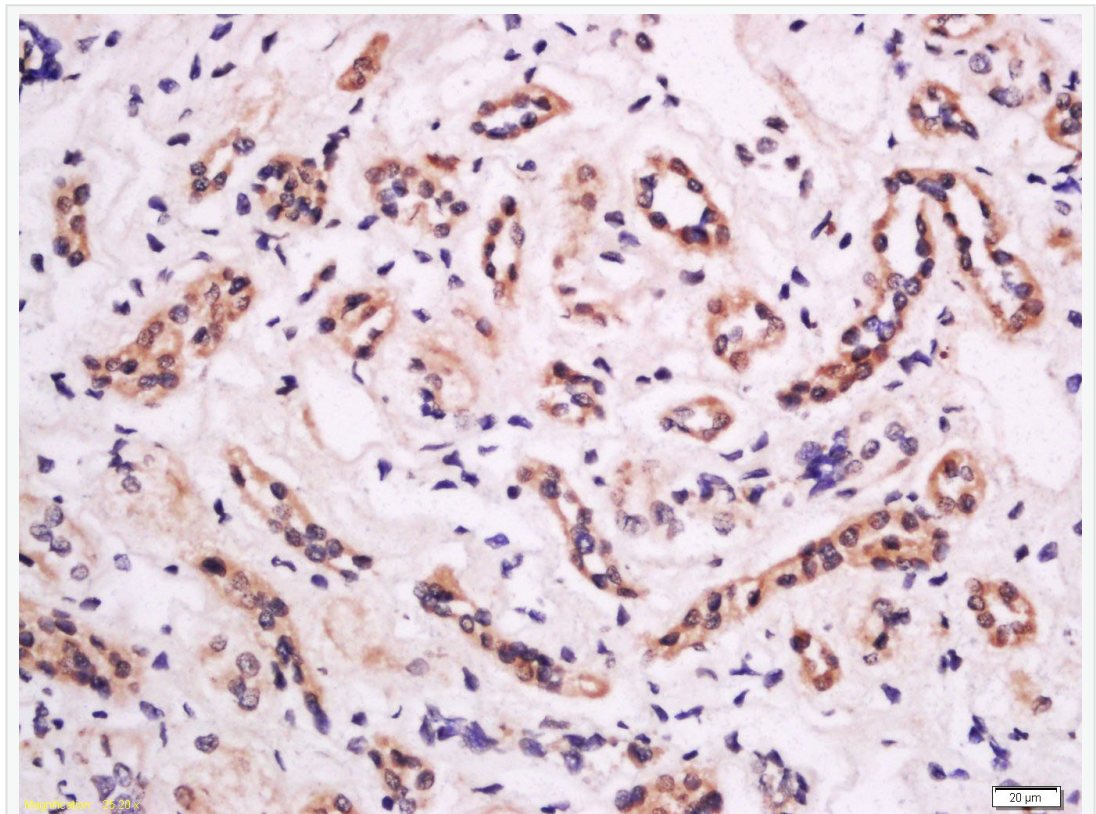
[Entrez Gene: 3689](#) Human

[Omim: 600065](#) Human

[SwissProt: P05107](#) Human

[Unigene: 375957](#) Human

**Product
Picture**

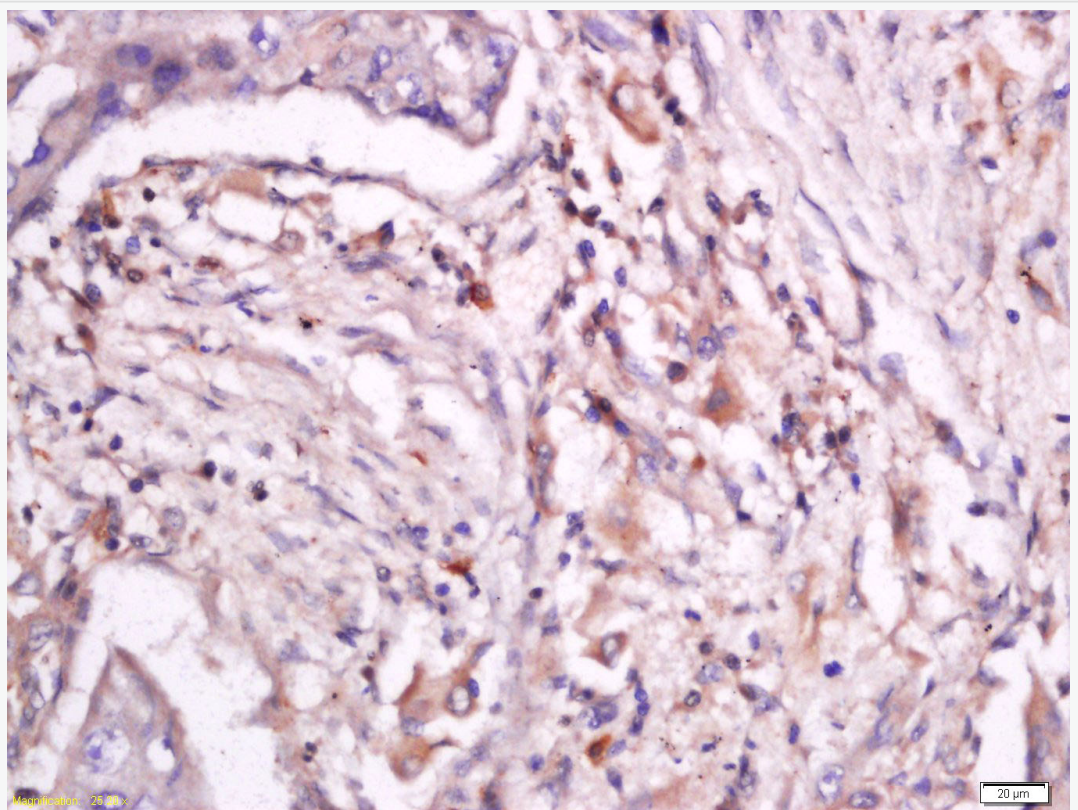


Tissue/cell: human kidney tissue; 4% Paraformaldehyde-fixed and paraffin-embedded;

Antigen retrieval: citrate buffer (1M, pH 6.0), Boiling bathing for 15min; Block endogenous peroxidase by 3% Hydrogen peroxide for 30min; Blocking buffer (normal goat serum,C-0005) at 37°C for 20 min;

Incubation: Anti-Phospho-CD18 (Thr758) Polyclonal Antibody,

Unconjugated(SL10462R) 1:200, overnight at 4°C, followed by conjugation to the secondary antibody(SP-0023) and DAB(C-0010) staining



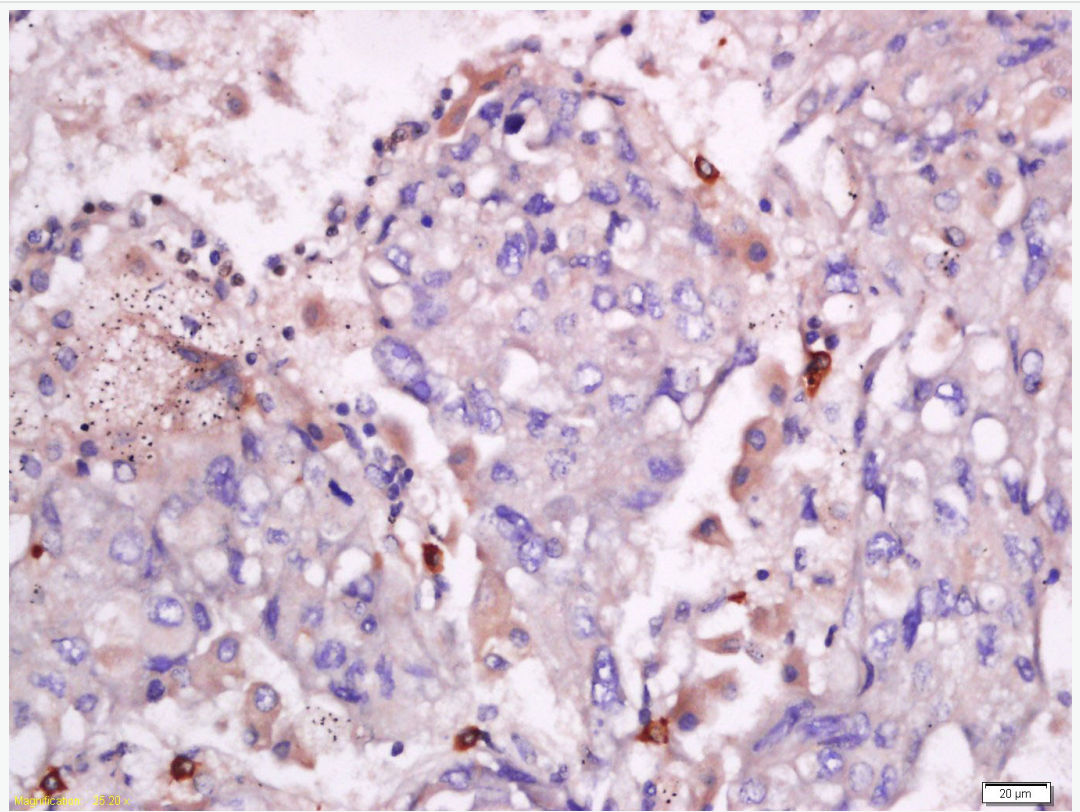
Tissue/cell: human lung carcinoma; 4% Paraformaldehyde-fixed and paraffin-embedded;

Antigen retrieval: citrate buffer (1M, pH 6.0), Boiling bathing for 15min; Block

endogenous peroxidase by 3% Hydrogen peroxide for 30min; Blocking buffer (normal goat serum,C-0005) at 37°C for 20 min;

Incubation: Anti-Phospho-CD18 (Thr758) Polyclonal Antibody,

Unconjugated(SL10462R) 1:200, overnight at 4°C, followed by conjugation to the secondary antibody(SP-0023) and DAB(C-0010) staining



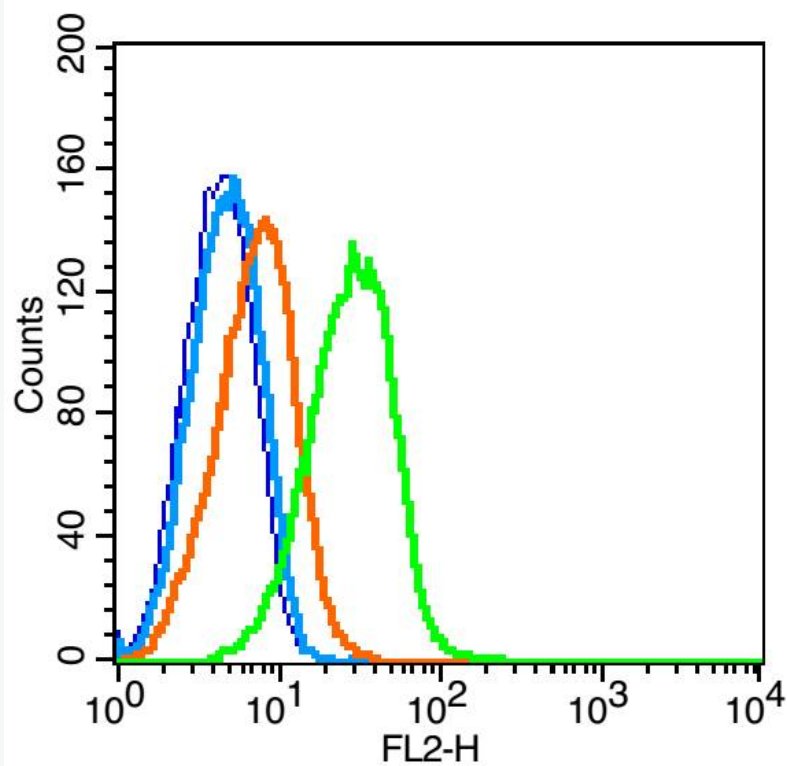
Tissue/cell: human lung carcinoma; 4% Paraformaldehyde-fixed and paraffin-embedded;

Antigen retrieval: citrate buffer (1M, pH 6.0), Boiling bathing for 15min; Block endogenous peroxidase by 3% Hydrogen peroxide for 30min; Blocking buffer

(normal goat serum,C-0005) at 37°C for 20 min;

Incubation: Anti-Phospho-CD18 (Thr758) Polyclonal Antibody,

Unconjugated(SL10462R) 1:200, overnight at 4°C, followed by conjugation to the secondary antibody(SP-0023) and DAB(C-0010) staining



Blank control: Raji cells(blue).

Primary Antibody: Rabbit Anti-Phospho-CD18 (Thr758) antibody(SL10462R),

Dilution: 1µg in 100 µL 1X PBS containing 0.5% BSA;

Isotype Control Antibody: Rabbit IgG (orange) ,used under the same conditions.

Secondary Antibody: Goat anti-rabbit IgG-PE(white blue), Dilution: 1:200 in 1 X



SunLong Biotech Co.,LTD
Tel: 0086-571-56623320 Fax:0086-571-56623318
E-mail:sales@sunlongbiotech.com
www.sunlongbiotech.com

PBS containing 0.5% BSA.