

Rabbit Anti-**Tex14** antibody

SL10437R

Product Name Tex14

Chinese Name 癌/睾丸抗原 113 抗体

Alias Cancer/testis antigen 113; CT113; Inactive serine/threonine protein kinase TEX14; SGK307; Protein kinase like protein SgK307; Sugen kinase 307; Testis expressed Protein 14; Testis expressed sequence 14; Testis expressed sequence 14 protein; TEX14_HUMAN.

Research Area Tumour Developmental biology Stem cells

Immunogen Species Rabbit

Clonality Polyclonal

React Species Mouse (predicted:Human,Rat,Dog)

Applications IHC-P=1:100-500,IHC-F=1:100-500,IF=1:100-500 (Paraffin sections need antigen repair)
not yet tested in other applications.
optimal dilutions/concentrations should be determined by the end user.

Theoretical molecular weight 168kDa

Cellular localization The nucleus cytoplasmic

Form Liquid

Concentration 1mg/ml

immunogen KLH conjugated synthetic peptide derived from human Tex14: 101-200/1497

Lsotype IgG

Purification affinity purified by Protein A

Buffer Solution 1M TBS(pH7.4) with 1% BSA, 3% Proclin300 and 50% Glycerol.

Storage Shipped at 4°C. Store at -20 °C for one year. Avoid repeated freeze/thaw cycles.

Attention This product as supplied is intended for research use only, not for use in human, therapeutic or diagnostic applications.

PubMed

[PubMed](#)

TEX14 is a 1,497 amino acid protein that belongs to the protein kinase superfamily and is expressed in testis. The gene encoding TEX14 is located on chromosome 17 and is required for spermatogenesis and normal structure of the intercellular bridge that connects spermatocytes and spermatogonia. TEX14 co-localizes with the centralspindlin complex, MKLP-1 (mitotic kinesin-like protein 1) and male germ cell Rac GTPase (Rac GTPase-activating protein) and converts these midbody matrix proteins into stable intercellular bridge components. TEX14 contains 3 ANK repeats and 1 protein kinase domain. Three isoforms exist due to alternative splicing events.

Function:

Testis-expressed gene 14 (TEX14) is a novel protein that localizes to germ cell intercellular bridges. In the absence of TEX14, intercellular bridges are not observed. Spermatogenesis in *Tex14*^{-/-} mice progresses through the transit amplification of diploid spermatogonia and the expression of early meiotic markers but halts before the completion of the first meiotic division.

Subunit:

Interacts with KIF23 and RBM44. Interacts with CEP55; inhibiting interaction between CEP55 and PDCD6IP/ALIX and TSG101

Product Detail

Subcellular Location:

Cytoplasm. Midbody. Chromosome, centromere, kinetochore. Note=Detected in the intercellular bridges that connect male germ cell daughter cells after cell division.

Tissue Specificity:

Detected in testis.

Post-translational modifications:

Phosphorylated on Thr residues by CDK1 during early phases of mitosis, promoting the interaction with PLK1 and recruitment to kinetochores. Phosphorylated on Ser-437 by PLK1 during late prometaphase promotes the rapid depletion from kinetochores and its subsequent degradation by the APC/C complex.

Similarity:

Belongs to the protein kinase superfamily.

Contains 3 ANK repeats.

Contains 1 protein kinase domain.

SWISS:

Q8IWB6

Gene ID:

56155

Database links:

[Entrez Gene: 522810](#) Cow

[Entrez Gene: 56155](#) Human

[Entrez Gene: 83560](#) Mouse

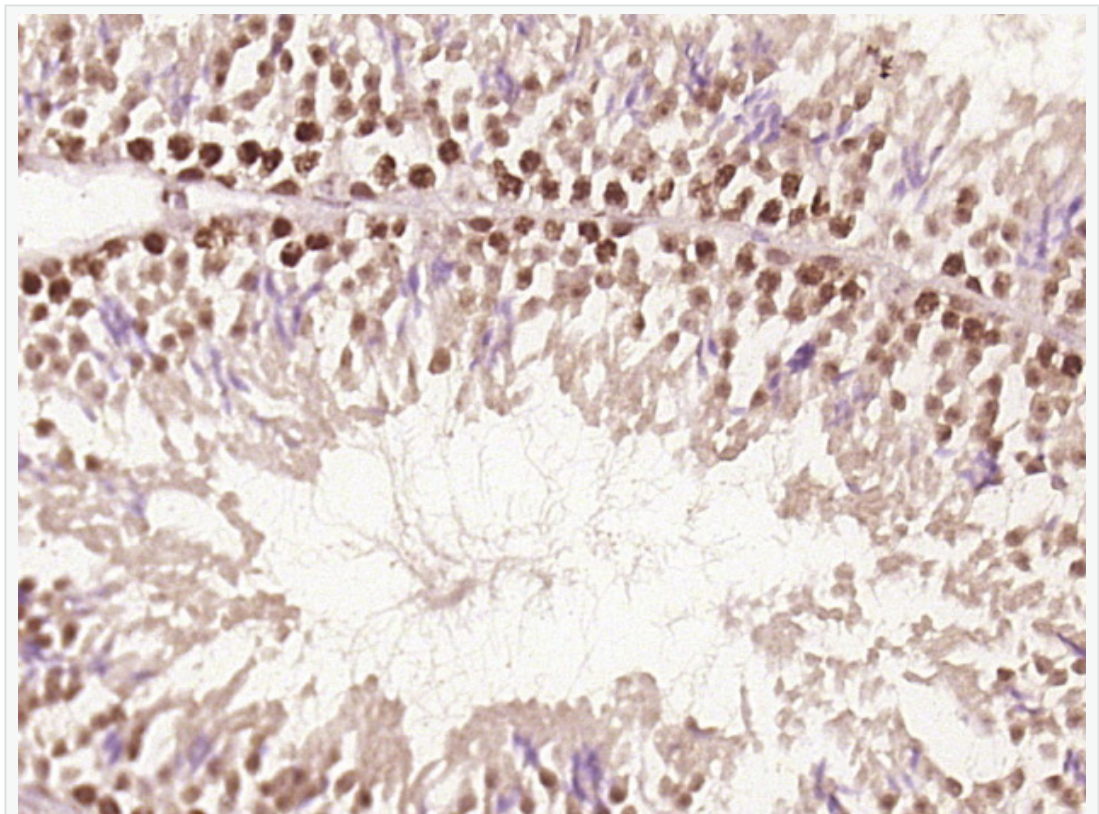
[Omim: 605792](#) Human

[SwissProt: F1MJR8](#) Cow

[SwissProt: Q8IWB6](#) Human

[SwissProt: Q7M6U3](#) Mouse

**Product
Picture**



Paraformaldehyde-fixed, paraffin embedded (Mouse testis); Antigen retrieval by boiling in sodium citrate buffer (pH6.0) for 15min; Block endogenous peroxidase by 3% hydrogen peroxide for 20 minutes; Blocking buffer (normal goat serum) at



SunLong Biotech Co.,LTD

Tel: 0086-571-56623320 Fax:0086-571-56623318

E-mail:sales@sunlongbiotech.com

www.sunlongbiotech.com

37°C for 30min; Antibody incubation with (Tex14) Polyclonal Antibody,
Unconjugated (SL10437R) at 1:400 overnight at 4°C, followed by operating
according to SP Kit(Rabbit) (sp-0023) instructions and DAB staining.