

## Rabbit Anti-PTGFR antibody

SL10433R

<b>Product Name</b>	PTGFR
<b>Chinese Name</b>	前列腺素 F2a 受体抗体 PGF2 $\alpha$ R
<b>Alias</b>	Prostaglandin F2 alpha Receptor PF2R_HUMAN; PGF receptor; PGF2 alpha receptor; PGF2-alpha receptor; Prostaglandin F receptor; Prostaglandin F2-alpha receptor; Prostaglandin receptor 2 alpha; Prostanoid FP receptor; PTGFR; FP; MGC120498; MGC46203.
<b>Research Area</b>	Neurobiology The cell membrane 受体 G protein-coupled receptor G protein signal The cell membrane 蛋白
<b>Immunogen Species</b>	Rabbit
<b>Clonality</b>	Polyclonal
<b>React Species</b>	Human, (predicted: Pig, Cow, Horse, ) WB=1:500-2000 (Paraffin sections need antigen repair)
<b>Applications</b>	not yet tested in other applications. optimal dilutions/concentrations should be determined by the end user.
<b>Theoretical molecular weight</b>	40kDa
<b>Cellular localization</b>	The cell membrane
<b>Form</b>	Liquid
<b>Concentration</b>	1mg/ml
<b>immunogen</b>	KLH conjugated synthetic peptide derived from human PTGFR: 121-220/359 <Extracellular>
<b>Lsotype</b>	IgG
<b>Purification</b>	affinity purified by Protein A
<b>Buffer Solution</b>	1M TBS(pH7.4) with 1% BSA, 3% Proclin300 and 50% Glycerol.
<b>Storage</b>	Shipped at 4°C. Store at -20 °C for one year. Avoid repeated freeze/thaw cycles.
<b>Attention</b>	This product as supplied is intended for research use only, not for use in human, therapeutic or diagnostic applications.
<b>PubMed</b>	<a href="#">PubMed</a>

The protein encoded by this gene is member of the G-protein coupled receptor family. This protein is a receptor for prostaglandin F2-alpha (PGF2-alpha), which is known to be a potent luteolytic agent, and may also be involved in modulating intraocular pressure and smooth muscle contraction in uterus. Knockout studies in mice suggest that the interaction of PGF2-alpha with this receptor may initiate parturition in ovarian luteal cells and thus induce luteolysis. Two transcript variants encoding different isoforms have been found for this gene. [provided by RefSeq, Jul 2008]

**Function:**

Receptor for prostaglandin F2-alpha (PGF2-alpha). The activity of this receptor is mediated by G proteins which activate a phosphatidylinositol-calcium second messenger system. Initiates luteolysis in the corpus luteum.

**Subcellular Location:**

Cell membrane; Multi-pass membrane protein.

**Product Detail**

**Similarity:**

Belongs to the G-protein coupled receptor 1 family.

**SWISS:**

P43088

**Gene ID:**

5737

**Database links:**

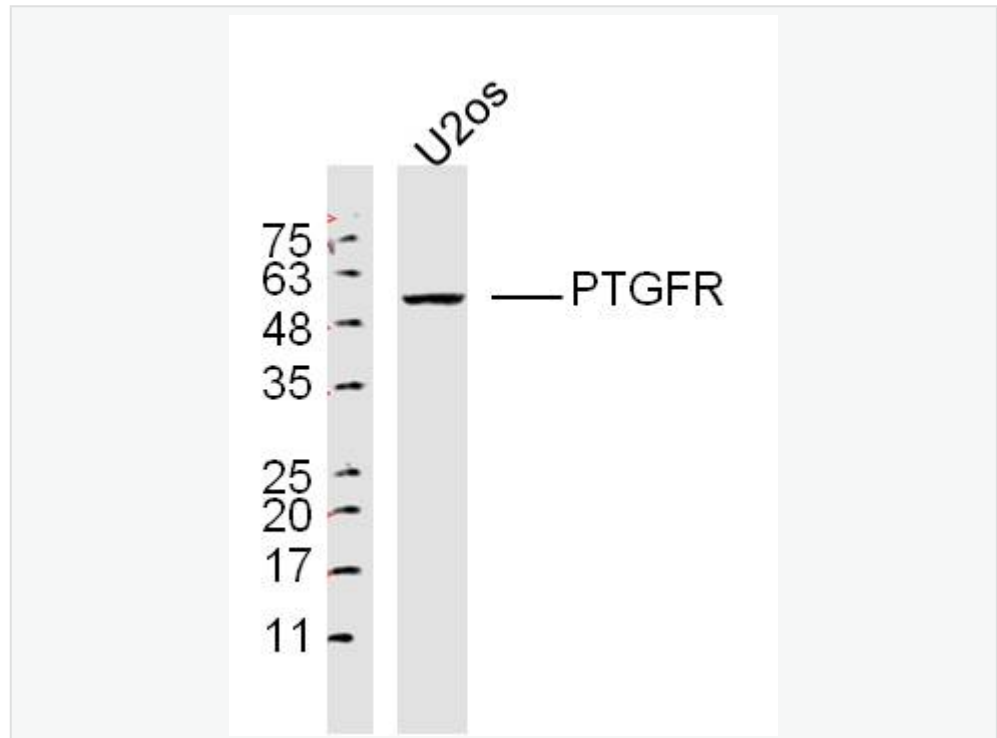
[Entrez Gene: 5737](#) Human

[Omid: 600563](#) Human

[SwissProt: P43088](#) Human

[Unigene: 654365](#) Human

**Product Picture**



Protein: U2os(human) lysates at 40ug; Primary: Anti-PTGFR  
(SL10433R) at 1:300;

Secondary: HRP conjugated Goat-Anti-Rabbit IgG(bse-0295G-HRP) at 1:  
5000;

ECL excited the fluorescence;

Predicted band size :40 kD

Observed band size :50 kD