

## Rabbit Anti-Sulfite oxidase antibody

SL10426R

**Product Name** Sulfite oxidase

**Chinese Name** 亚硫酸盐氧化酶抗体

**Alias** SO; EC 1.8.3.1; mitochondrial; Sulfite oxidase; Sulfite oxidase mitochondrial; Sulfite oxidase, mitochondrial precursor; Suox; SUOX\_HUMAN.

**Research Area** Tumour Cell biology Neurobiology Signal transduction transcriptional regulatory factor The new supersedes the old Mitochondrion

**Immunogen Species** Rabbit

**Clonality** Polyclonal

**React Species** Rat (predicted:Human,Mouse,Dog,Horse)

**Applications** IHC-P=1:100-500,IHC-F=1:100-500,IF=1:100-500 (Paraffin sections need antigen repair)  
not yet tested in other applications.  
optimal dilutions/concentrations should be determined by the end user.

**Theoretical molecular weight** 52kDa

**Cellular localization** cytoplasmic The cell membrane Mitochondrion

**Form** Liquid

**Concentration** 1mg/ml

**immunogen** KLH conjugated synthetic peptide derived from human Sulfite oxidase: 351-450/545

**Lsotype** IgG

**Purification** affinity purified by Protein A

**Buffer Solution** 1M TBS(pH7.4) with 1% BSA, 3% Proclin300 and 50% Glycerol.

**Storage** Shipped at 4°C. Store at -20 °C for one year. Avoid repeated freeze/thaw cycles.

**Attention** This product as supplied is intended for research use only, not for use in human, therapeutic or diagnostic applications.

**PubMed** [PubMed](#)

**Product** Sulfite oxidase is a homodimeric protein localized to the intermembrane space of

---

**Detail**

mitochondria. Each subunit contains a heme domain and a molybdopterin-binding domain. The enzyme catalyzes the oxidation of sulfite to sulfate, the final reaction in the oxidative degradation of the sulfur amino acids cysteine and methionine. Sulfite oxidase deficiency results in neurological abnormalities which are often fatal at an early age. Alternative splicing results in multiple transcript variants encoding identical proteins. [provided by RefSeq, Jul 2008]

**Subunit:**

Homodimer.

**Subcellular Location:**

Mitochondrion intermembrane space.

**DISEASE:**

Defects in SUOX are the cause of isolated sulfite oxidase deficiency (ISOD) [MIM:272300]; also known as sulfocysteinuria. ISOD is characterized by neurological abnormalities including multicystic leukoencephalopathy with brain atrophy. Patients often suffer from seizures. Often leads to death at an early age.

**Similarity:**

Contains 1 cytochrome b5 heme-binding domain.

**SWISS:**

P51687

**Gene ID:**

6821

**Database links:**

[Entrez Gene: 6821](#) Human

[Entrez Gene: 211389](#) Mouse

[Omim: 606887](#) Human

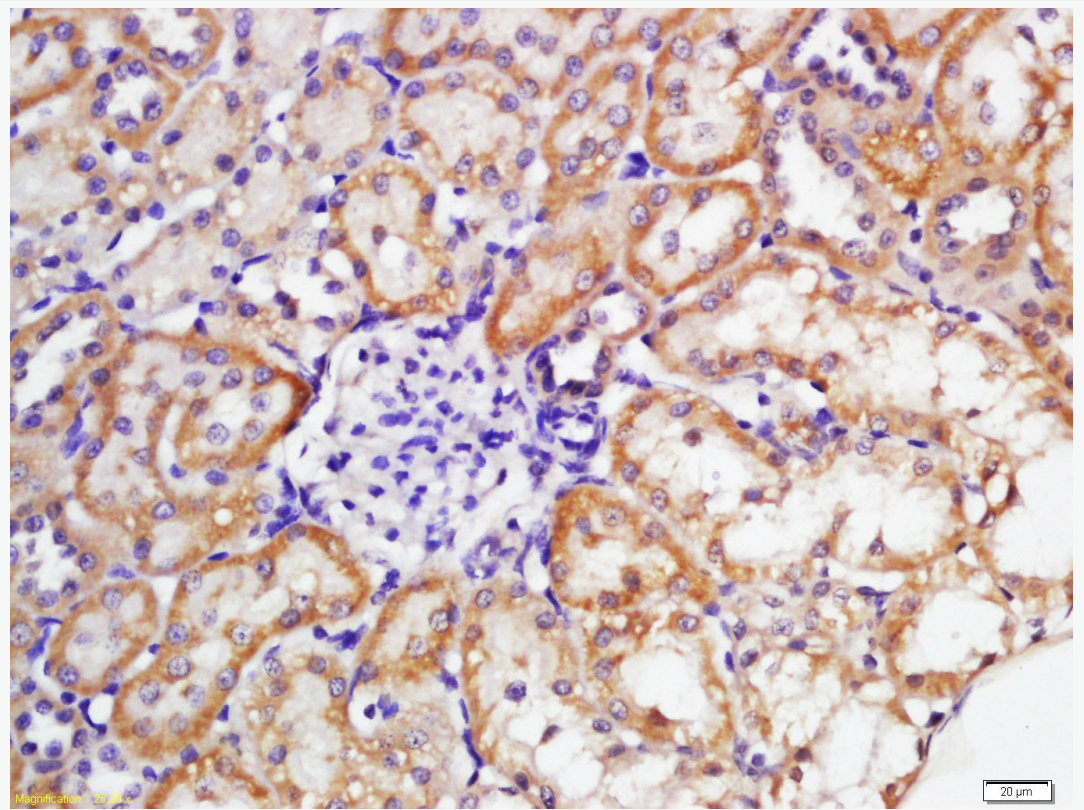
[SwissProt: P51687](#) Human

[SwissProt: Q8R086](#) Mouse

[Unigene: 558403](#) Human

[Unigene: 23352](#) Mouse

**Product  
Picture**



Tissue/cell: rat kidney tissue; 4% Paraformaldehyde-fixed and paraffin-embedded;

Antigen retrieval: citrate buffer ( 1M, pH 6.0 ), Boiling bathing for 15min; Block endogenous peroxidase by 3% Hydrogen peroxide for 30min; Blocking buffer (normal goat serum,C-0005) at 37°C for 20 min;

Incubation: Anti-Sulfite oxidase Polyclonal Antibody, Unconjugated(SL10426R) 1:200, overnight at 4°C, followed by conjugation to the secondary antibody(SP-0023) and DAB(C-0010) staining