



## Rabbit Anti-CCL26 Signal peptide antibody

SL10409R

**Product Name** CCL26 Signal peptide

**Chinese Name** 嗜酸粒细胞趋化蛋白 3 抗体

**Alias**

C-C motif chemokine 26; CC chemokine IMAC; CCL 26; CCL26; Chemokine (C C motif) ligand 26; Eotaxin-3; IMAC; Macrophage inflammatory protein 4-alpha; MIP 4a; MIP 4alpha; MIP-4-alpha; MIP4a; MIP4alpha; SCYA 26; SCYA26; Small inducible cytokine A26; Small inducible cytokine subfamily A (Cys Cys) member 26; Small inducible cytokine subfamily A member 26; Small-inducible cytokine A26; Thymic stroma chemokine 1; Thymic stroma chemokine-1; TSC 1; TSC-1; TSC1; CCL26 Signal peptide; .

**Research Area**

Cell biology immunology Apoptosis Chemokine Ubiquitin

**Immunogen Species**

Rabbit

**Clonality**

Polyclonal

**React Species**

Human, Rat, (predicted: Mouse, )

**Applications**

IHC-P=1:100-500,IHC-F=1:100-500,IF=1:100-500,Flow-Cyt=1ug/test (Paraffin sections need antigen repair)  
not yet tested in other applications.  
optimal dilutions/concentrations should be determined by the end user.

**Theoretical molecular weight**

11kDa

**Cellular localization**

Secretory protein

**Form**

Liquid

**Concentration**

1mg/ml

**immunogen**

KLH conjugated synthetic peptide derived from rat CCL26 Signal peptide: 1-70/94

**Lsotype**

IgG

**Purification**

affinity purified by Protein A

**Buffer Solution**

1M TBS(pH7.4) with 1% BSA, 3% Proclin300 and 50% Glycerol.

**Storage**

Shipped at 4°C. Store at -20 °C for one year. Avoid repeated freeze/thaw cycles.



**Attention**

This product as supplied is intended for research use only, not for use in human, therapeutic or diagnostic applications.

**PubMed**

[PubMed](#)

The product of this gene functions in the nucleotide excision repair pathway, and is required for the repair of DNA lesions such as those induced by UV light or formed by electrophilic compounds including cisplatin. The encoded protein forms a heterodimer with the XPF endonuclease (also known as ERCC4), and the heterodimeric endonuclease catalyzes the 5' incision in the process of excising the DNA lesion. The heterodimeric endonuclease is also involved in recombinational DNA repair and in the repair of inter-strand crosslinks. Mutations in this gene result in cerebrooculofacioskeletal syndrome, and polymorphisms that alter expression of this gene may play a role in carcinogenesis. Multiple transcript variants encoding different isoforms have been found for this gene. The last exon of this gene overlaps with the CD3e molecule, epsilon associated protein gene on the opposite strand. [provided by RefSeq, Oct 2009]

**Function:**

Chemotactic for eosinophils and basophils. Binds to CCR3.

**Subunit:**

Monomer.

**Product  
Detail**

**Subcellular Location:**

Secreted.

**Tissue Specificity:**

Ubiquitously expressed at low levels in various tissues including heart and ovary.

**Similarity:**

Belongs to the intercrine beta (chemokine CC) family.

**SWISS:**

N/A

**Gene ID:**

292673

**Database links:**

[Entrez Gene: 10344](#) Human

[Entrez Gene: 541307](#) Mouse

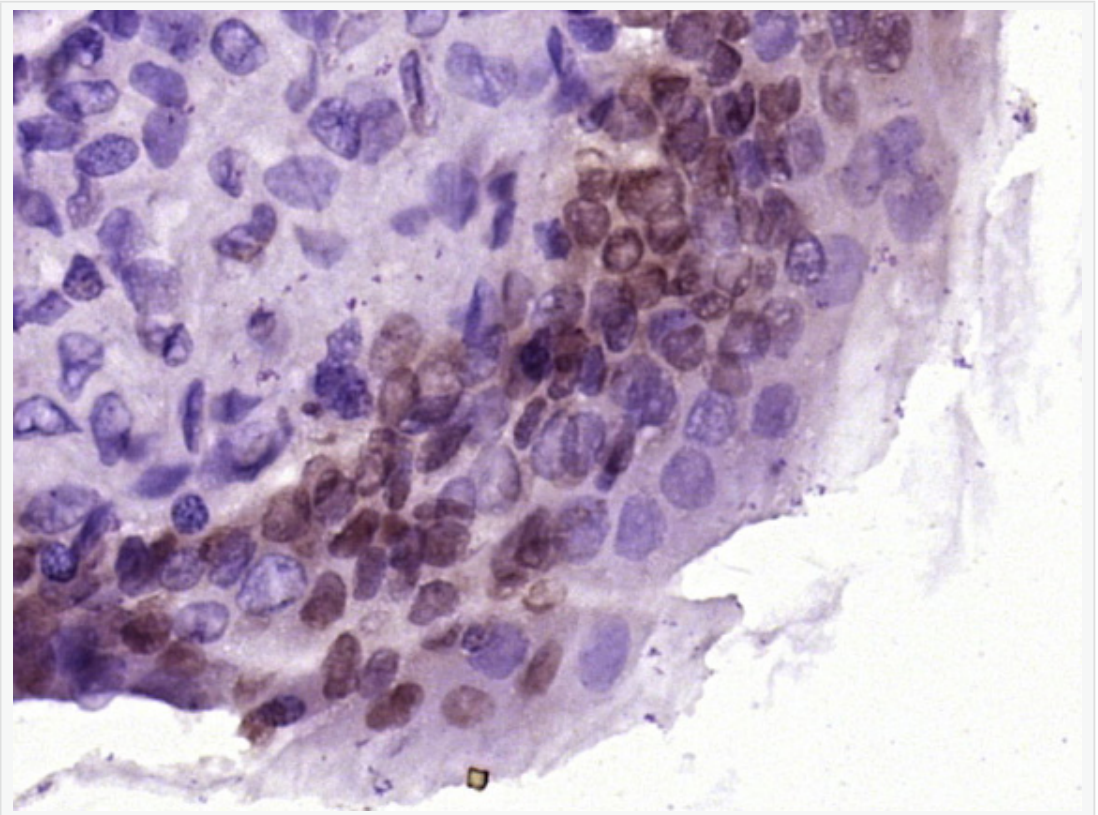
[Omim: 604697](#) Human

[SwissProt: Q9Y258](#) Human

[Unigene: 131342](#) Human

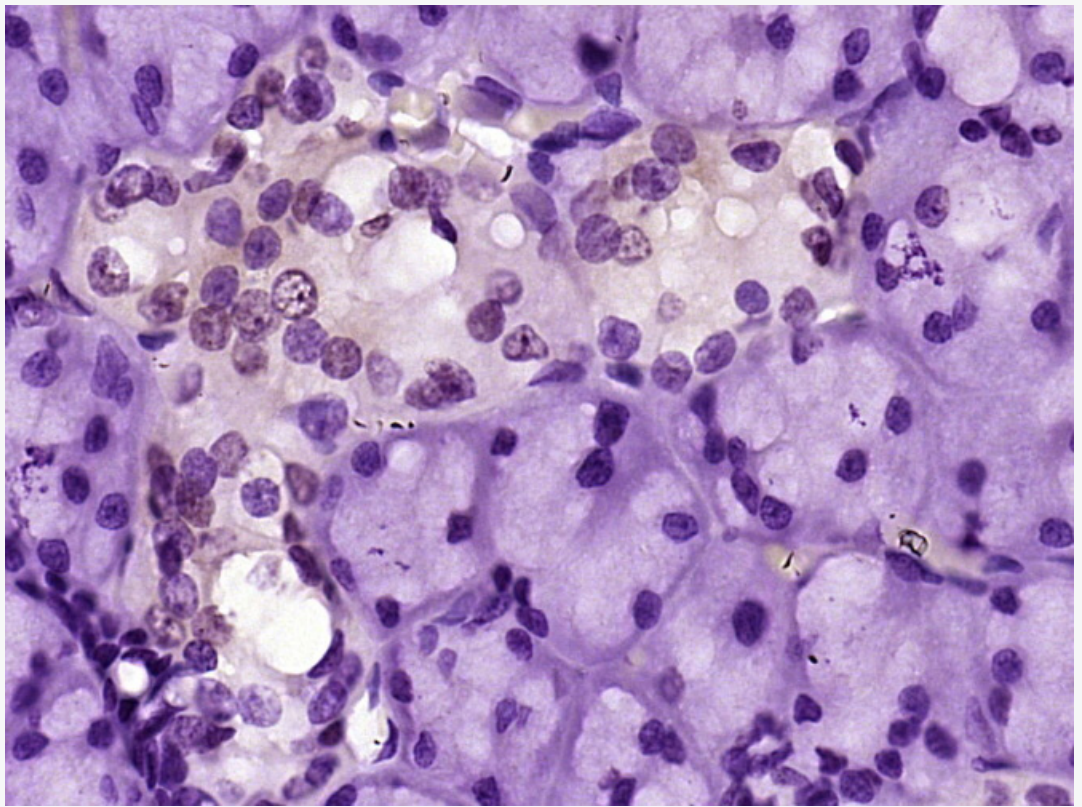
[Unigene: 376459](#) Mouse

**Product  
Picture**

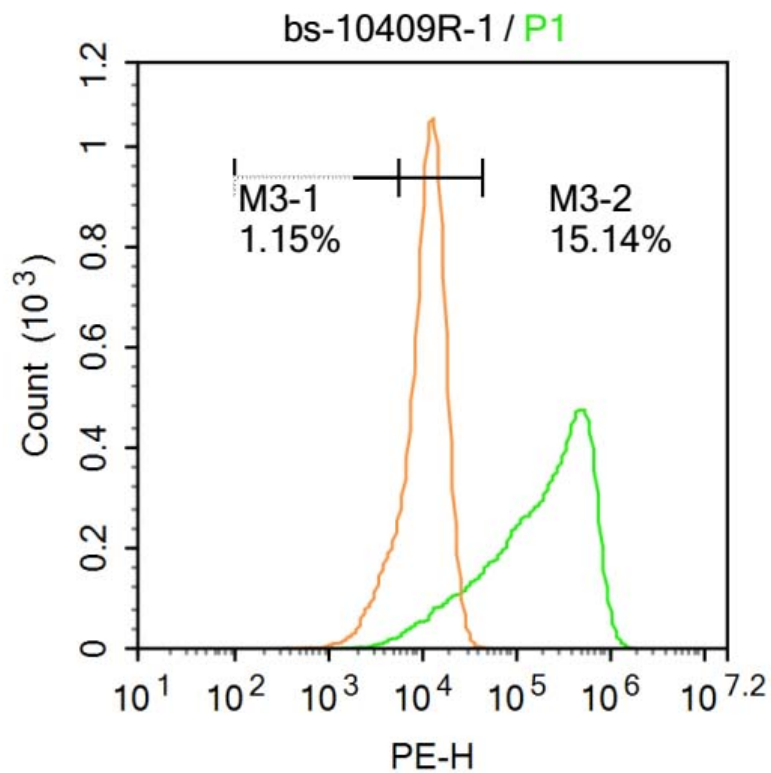


Paraformaldehyde-fixed, paraffin embedded (Rat urinary bladder); Antigen retrieval by boiling in sodium citrate buffer (pH6.0) for 15min; Block endogenous peroxidase by 3% hydrogen peroxide for 20 minutes; Blocking buffer (normal goat serum) at 37°C for 30min; Antibody incubation with (CCL26 Signal peptide) Polyclonal Antibody, Unconjugated (SL10409R) at 1:400 overnight at 4°C, followed by operating according to SP Kit(Rabbit) (sp-0023) instructions and DAB

staining.



Paraformaldehyde-fixed, paraffin embedded (Rat thyroid gland); Antigen retrieval by boiling in sodium citrate buffer (pH6.0) for 15min; Block endogenous peroxidase by 3% hydrogen peroxide for 20 minutes; Blocking buffer (normal goat serum) at 37°C for 30min; Antibody incubation with (CCL26 Signal peptide) Polyclonal Antibody, Unconjugated (SL10409R) at 1:400 overnight at 4°C, followed by operating according to SP Kit(Rabbit) (sp-0023) instructions and DAB staining.



Blank control:U-2OS.

Primary Antibody (green line): Rabbit Anti-CCL26 antibody (SL10409R)

Dilution: 1 $\mu$ g /10<sup>6</sup> cells;

Isotype Control Antibody (orange line): Rabbit IgG .

Secondary Antibody : Goat anti-rabbit IgG-PE

Dilution: 1 $\mu$ g /test.

Protocol

The cells were fixed with 4% PFA (10min at room temperature)and then permeabilized with 20% PBST for 20 min at room temperature. The cells were then incubated in 5%BSA to block non-specific protein-protein interactions for 30



SunLong Biotech Co.,LTD

Tel: 0086-571-56623320 Fax:0086-571-56623318

E-mail:sales@sunlongbiotech.com

www.sunlongbiotech.com

min at at room temperature .Cells stained with Primary Antibody for 30 min at room temperature. The secondary antibody used for 40 min at room temperature. Acquisition of 20,000 events was performed.