

Rabbit Anti-Dishevelled 2 antibody

SL10400R

Product Name Dishevelled 2

Chinese Name 蓬乱蛋白 2 抗体

Alias Dishevelled 2 (homologous to Drosophila dsh); Dishevelled dsh homolog 2; Dishevelled-2; Dishevelled2; DSH homolog 2; DVL 2; Dvl2; DVL2_HUMAN; Segment polarity protein dishevelled homolog DVL 2; Segment polarity protein dishevelled homolog DVL-2; Segment polarity protein dishevelled homolog DVL2.

Research Area Cell biology immunology Signal transduction Stem cells Apoptosis

Immunogen Species Rabbit

Clonality Polyclonal

React Species Rat, (predicted: Human, Mouse, Dog, Pig, Cow, Horse, Sheep,)

Applications IHC-P=1:100-500,IHC-F=1:100-500,IF=1:100-500 (Paraffin sections need antigen repair)
not yet tested in other applications.
optimal dilutions/concentrations should be determined by the end user.

Theoretical molecular weight 79kDa

Cellular localization cytoplasmic The cell membrane

Form Liquid

Concentration 1mg/ml

immunogen KLH conjugated synthetic peptide derived from human shevelled 2: 421-520/736

Lsotype IgG

Purification affinity purified by Protein A

Buffer Solution 1M TBS(pH7.4) with 1% BSA, 3% Proclin300 and 50% Glycerol.

Storage Shipped at 4°C. Store at -20 °C for one year. Avoid repeated freeze/thaw cycles.

Attention This product as supplied is intended for research use only, not for use in human, therapeutic or diagnostic applications.

PubMed

[PubMed](#)

This gene encodes a member of the dishevelled (dsh) protein family. The vertebrate dsh proteins have approximately 40% amino acid sequence similarity with Drosophila dsh. This gene encodes a 90-kD protein that undergoes posttranslational phosphorylation to form a 95-kD cytoplasmic protein, which may play a role in the signal transduction pathway mediated by multiple Wnt proteins. The mechanisms of dishevelled function in Wnt signaling are likely to be conserved among metazoans. [provided by RefSeq, Jul 2008].

Function:

Participates in Wnt signaling by binding to the cytoplasmic C-terminus of frizzled family members and transducing the Wnt signal to down-stream effectors. Promotes internalization and degradation of frizzled proteins upon Wnt signaling. Plays a role both in canonical and non-canonical Wnt signaling. Plays a role in the signal transduction pathways mediated by multiple Wnt genes.

Subunit:

Interacts through its PDZ domain with the C-terminal regions of VANGL1 and VANGL2. Interacts with Rac. Interacts with ARRB1; the interaction is enhanced by phosphorylation of DVL1. Can form large oligomers (via DIX domain). Interacts (via DIX domain) with DIXDC1 (via DIX domain). Interacts (via DEP domain) with AP2M1 and the AP-2 complex. Interacts with DACT1.

**Product
Detail**

Subcellular Location:

Cell membrane; Peripheral membrane protein; Cytoplasmic side. Cytoplasm, cytosol. Cytoplasmic vesicle. Note=Localizes at the cell membrane upon interaction with frizzled family members and promotes their internalization. Localizes to cytoplasmic puncta.

Post-translational modifications:

Phosphorylated by CSNK1D.

Similarity:

Belongs to the DSH family.
Contains 1 DEP domain.
Contains 1 DIX domain.
Contains 1 PDZ (DHR) domain.

SWISS:

O14641

Gene ID:

1856

Database links:

[Entrez Gene: 1856](#) Human

[Entrez Gene: 13543](#) Mouse

[Entrez Gene: 303251](#) Rat

[Omim: 602151](#) Human

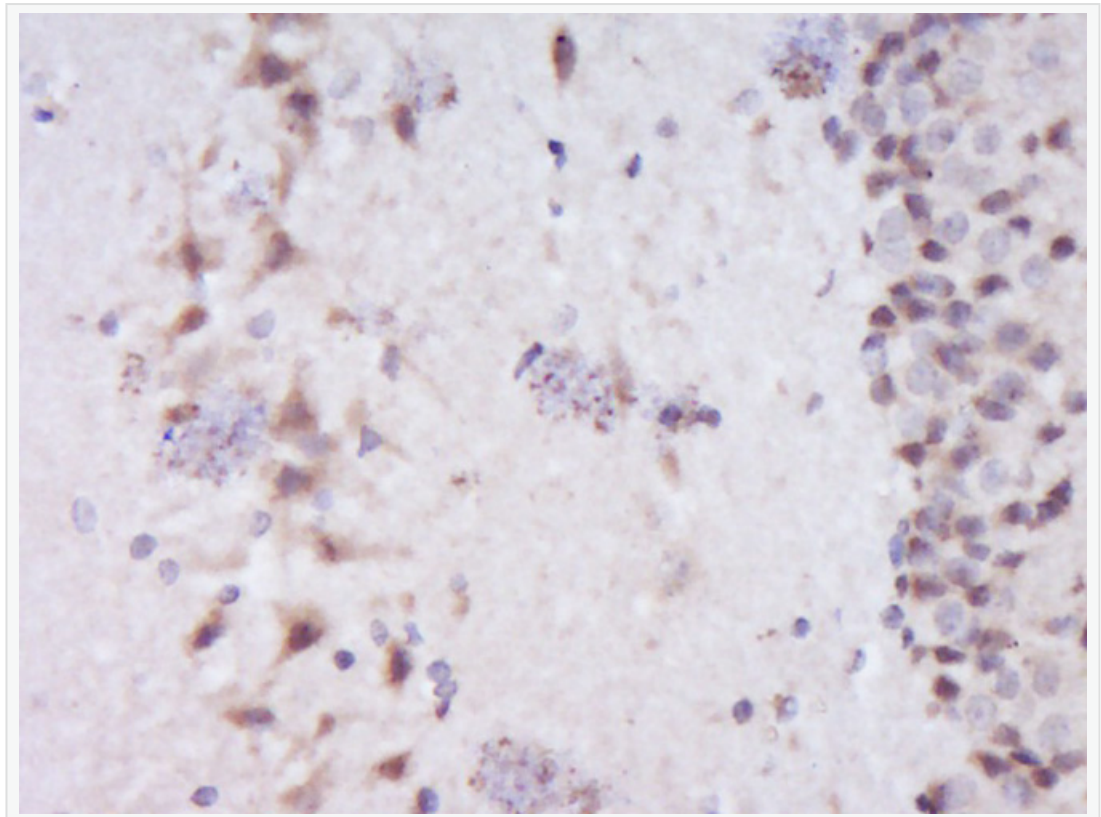
[SwissProt: O14641](#) Human

[SwissProt: Q60838](#) Mouse

[Unigene: 118640](#) Human

[Unigene: 5114](#) Mouse

**Product
Picture**





Paraformaldehyde-fixed, paraffin embedded (Rat brain); Antigen retrieval by boiling in sodium citrate buffer (pH6.0) for 15min; Block endogenous peroxidase by 3% hydrogen peroxide for 20 minutes; Blocking buffer (normal goat serum) at 37°C for 30min; Antibody incubation with (Dishevelled 2) Polyclonal Antibody, Unconjugated (SL10400R) at 1:400 overnight at 4°C, followed by operating according to SP Kit(Rabbit) (sp-0023) instructions and DAB staining.