

Rabbit Anti-Syntrophin-2 antibody

SL10384R

Product Name	Syntrophin-2
Chinese Name	互养蛋白 2 抗体
Alias	Beta 1 syntrophin; Beta 1-syntrophin; SNTB1_HUMAN; Beta-1-syntrophin; Syntrophin beta 2; Syntrophin-beta-2; Syntrophin beta-2; 59 kDa dystrophin-associated protein A1 basic component 1; DAPA1B; BSYN2; Syntrophin 2; Tax interaction protein 43; TIP-43; SNTB1; SNT2B1; 59-DAP; A1B; BSYN2; DAPA1B; SNT2; SNT2B1.
Research Area	Cell biology Signal transduction Binding protein Transmembrane protein The cell membrane 蛋白
Immunogen Species	Rabbit
Clonality	Polyclonal
React Species	Mouse, (predicted: Human, Rat, Dog, Horse, Rabbit,) IHC-P=1:100-500,IHC-F=1:100-500,IF=1:100-500 (Paraffin sections need antigen repair)
Applications	not yet tested in other applications. optimal dilutions/concentrations should be determined by the end user.
Theoretical molecular weight	59kDa
Cellular localization	The cell membrane
Form	Liquid
Concentration	1mg/ml
immunogen	KLH conjugated synthetic peptide derived from human Syntrophin-2: 51-150/538
Lsotype	IgG
Purification	affinity purified by Protein A
Buffer Solution	1M TBS(pH7.4) with 1% BSA, 3% Proclin300 and 50% Glycerol.
Storage	Shipped at 4°C. Store at -20 °C for one year. Avoid repeated freeze/thaw cycles.
Attention	This product as supplied is intended for research use only, not for use in human,

therapeutic or diagnostic applications.

PubMed

[PubMed](#)

Dystrophin is a large, rod-like cytoskeletal protein found at the inner surface of muscle fibers. Dystrophin is missing in Duchenne Muscular Dystrophy patients and is present in reduced amounts in Becker Muscular Dystrophy patients. The protein encoded by this gene is a peripheral membrane protein found associated with dystrophin and dystrophin-related proteins. This gene is a member of the syntrophin gene family, which contains at least two other structurally-related genes. [provided by RefSeq, Jul 2008].

Function:

Adapter protein that binds to and probably organizes the subcellular localization of a variety of membrane proteins. May link various receptors to the actin cytoskeleton and the dystrophin glycoprotein complex.

Subunit:

Monomer and homodimer (Probable). Interacts with the other members of the syntrophin family SNTA1 and SNTB2; with the sodium channel proteins SCN4A and SCN5A. Interacts with the viral HTLV-1 TAX protein and with dystrophin protein DMD and related proteins DTNA and UTRN.

Product Detail

Subcellular Location:

Cell membrane, sarcolemma; Peripheral membrane protein; Cytoplasmic side. Cell junction. Cytoplasm, cytoskeleton. Note=In skeletal muscle, it localizes at the cytoplasmic side of the sarcolemmal membrane and at neuromuscular junctions.

Tissue Specificity:

Ubiquitous.

Post-translational modifications:

Phosphorylated by CaM-kinase II.

Similarity:

Belongs to the syntrophin family.
Contains 1 PDZ (DHR) domain.
Contains 2 PH domains.
Contains 1 SU (syntrophin unique) domain.

SWISS:

Q13884

Gene ID:

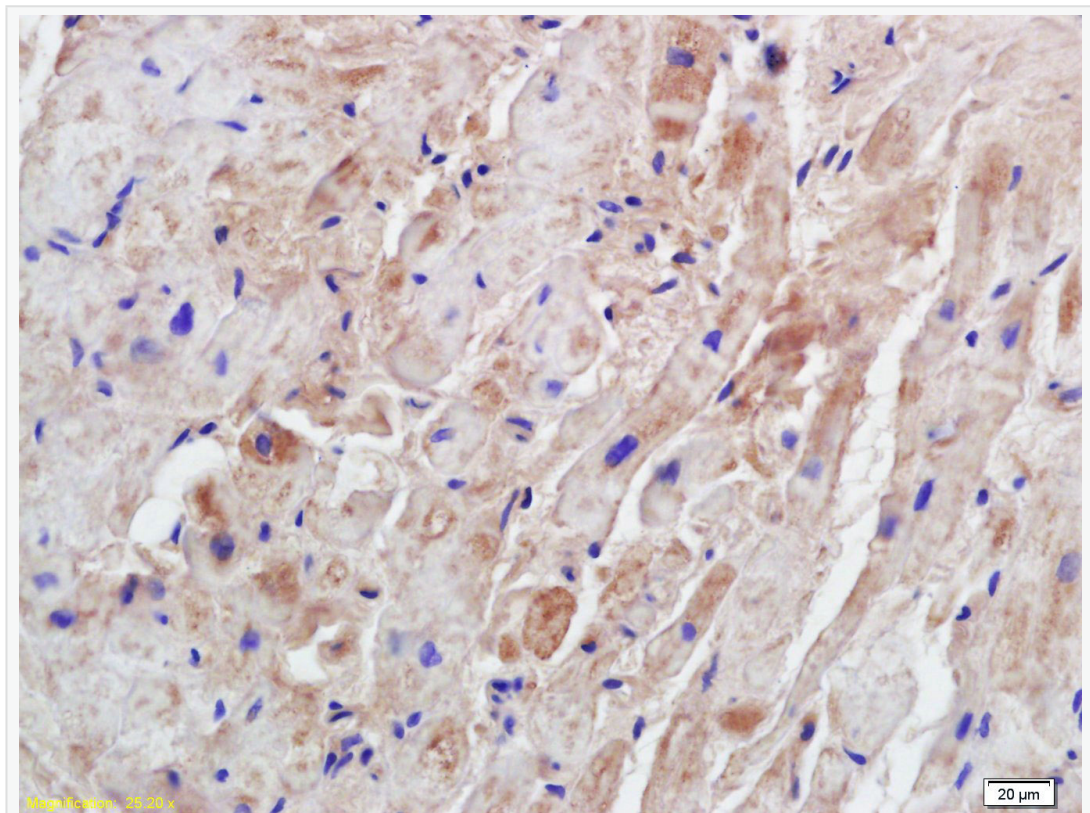
6641

Database links:

[Entrez Gene: 6641](#) Human

[SwissProt: Q13884](#) Human

**Product
Picture**



Tissue/cell: mouse heart tissue; 4% Paraformaldehyde-fixed and paraffin-embedded;

Antigen retrieval: citrate buffer (1M, pH 6.0), Boiling bathing for 15min; Block endogenous peroxidase by 3% Hydrogen peroxide for 30min; Blocking buffer (normal goat serum,C-0005) at 37°C for 20 min;

Incubation: Anti-Syntrophin-2 Polyclonal Antibody, Unconjugated(SL10384R)



1:200, overnight at 4°C, followed by conjugation to the secondary antibody(SP-0023) and DAB(C-0010) staining