

Rabbit Anti-GLUT2 antibody

SL10379R

Product Name GLUT2

Chinese Name 葡萄糖 Transporter2 抗体

Alias GTR2_HUMAN; Solute carrier family 2, facilitated glucose transporter member 2; SLC2A2; Glucose transporter type 2, liver; GLUT-2; GLUT 2; solute carrier family 2 member 2;

Immunogen Species Rabbit

Clonality Polyclonal

React Species Human, Mouse, Rat, (predicted: Horse,)

Applications WB=1:500-2000,IHC-P=1:100-500,IHC-F=1:100-500,IF=1:100-500,Flow-Cyt=1µg/Test
(Paraffin sections need antigen repair)
not yet tested in other applications.
optimal dilutions/concentrations should be determined by the end user.

Theoretical molecular weight 54kDa

Cellular localization The cell membrane

Form Liquid

Concentration 1mg/ml

immunogen KLH conjugated synthetic peptide derived from human GLUT2: 1-100/524
<Extracellular>

Lsotype IgG

Purification affinity purified by Protein A

Buffer Solution 1M TBS(pH7.4) with 1% BSA, 3% Proclin300 and 50% Glycerol.

Storage Shipped at 4°C. Store at -20 °C for one year. Avoid repeated freeze/thaw cycles.

Attention This product as supplied is intended for research use only, not for use in human, therapeutic or diagnostic applications.

PubMed [PubMed](#)

Product This gene encodes an integral plasma membrane glycoprotein of the liver, islet beta cells, intestine, and kidney epithelium. The encoded protein mediates facilitated bidirectional glucose

Detail

transport. Because of its low affinity for glucose, it has been suggested as a glucose sensor. Mutations in this gene are associated with susceptibility to diseases, including Fanconi-Bickel syndrome and noninsulin-dependent diabetes mellitus (NIDDM). Alternative splicing results in multiple transcript variants of this gene. [provided by RefSeq, Jul 2013]

Function:

Facilitative glucose transporter. This isoform likely mediates the bidirectional transfer of glucose across the plasma membrane of hepatocytes and is responsible for uptake of glucose by the beta cells; may comprise part of the glucose-sensing mechanism of the beta cell. May also participate with the Na(+)/glucose cotransporter in the transcellular transport of glucose in the small intestine and kidney.

Subcellular Location:

Membrane; Multi-pass membrane protein.

Tissue Specificity:

Liver, insulin-producing beta cell, small intestine and kidney.

Post-translational modifications:

N-glycosylated; required for stability and retention at the cell surface of pancreatic beta cells.

DISEASE:

Defects in SLC2A2 are the cause of Fanconi-Bickel syndrome (FBS) [MIM:227810]. FBS is a rare, well-defined clinical entity, inherited in an autosomal recessive mode and characterized by hepatorenal glycogen accumulation, proximal renal tubular dysfunction, and impaired utilization of glucose and galactose.

Similarity:

Belongs to the major facilitator superfamily. Sugar transporter (TC 2.A.1.1) family. Glucose transporter subfamily.

SWISS:

P11168

Gene ID:

6514

Database links:

[Entrez Gene: 6514](#) Human

[Entrez Gene: 20526](#) Mouse

[Entrez Gene: 25351](#) Rat

[Omim: 138160](#) Human

[SwissProt: P11168](#) Human

[SwissProt: P14246](#) Mouse

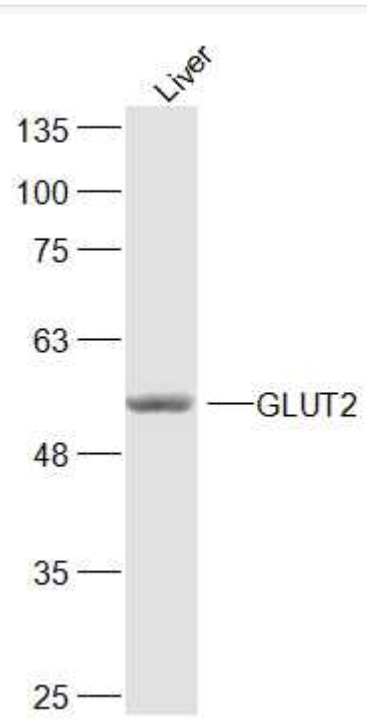
[SwissProt: P12336](#) Rat

[Unigene: 167584](#) Human

[Unigene: 18443](#) Mouse

[Unigene: 89295](#) Rat

**Product
Picture**



Sample:

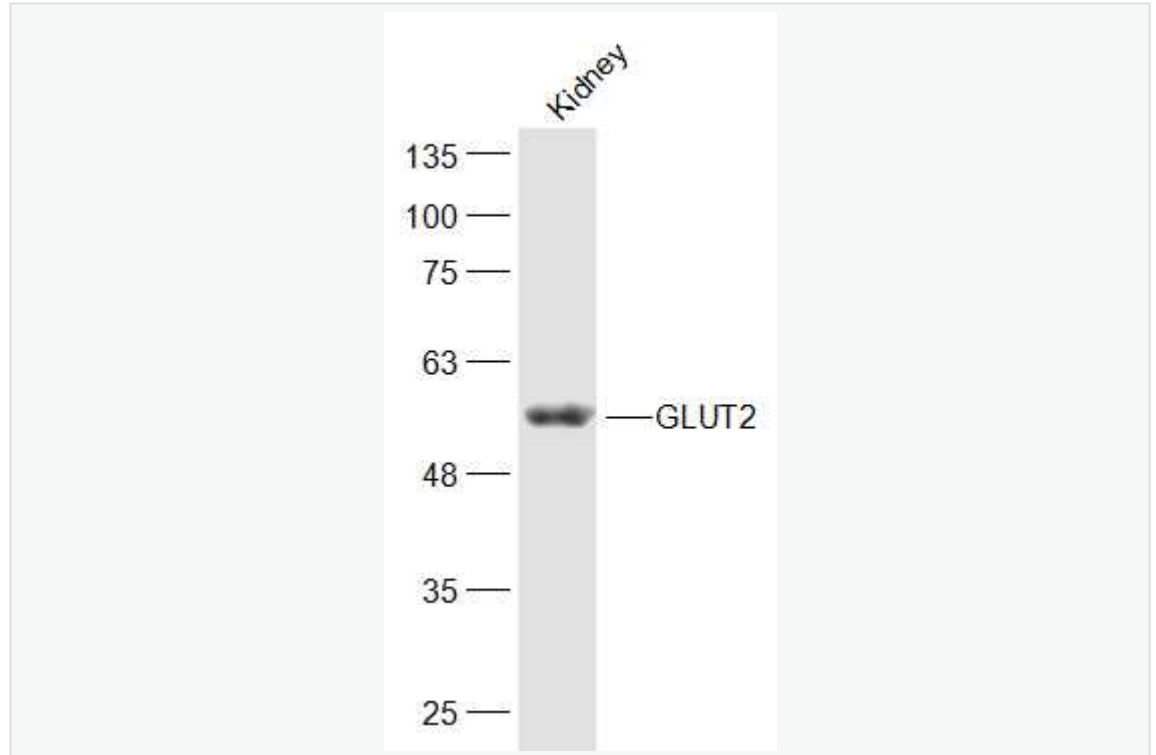
Liver (Mouse) Lysate at 40 ug

Primary: Anti-GLUT2 (SL10379R) at 1/300 dilution

Secondary: IRDye800CW Goat Anti-Rabbit IgG at 1/20000 dilution

Predicted band size: 54 kD

Observed band size: 54 kD



Sample:

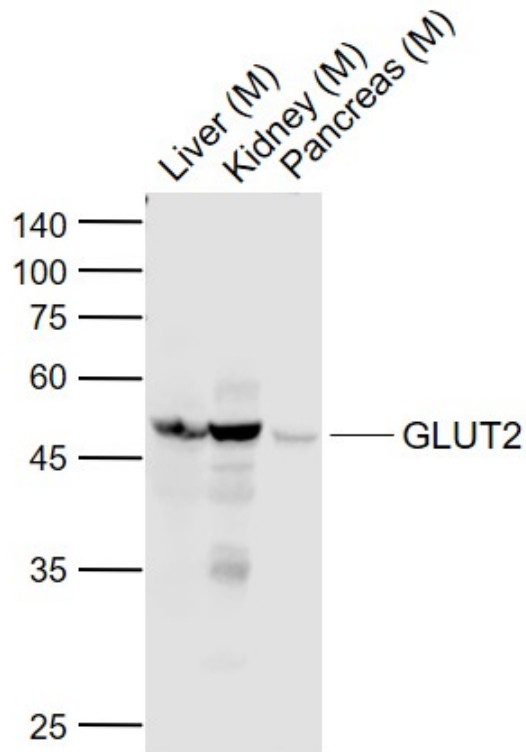
Kidney (Mouse) Lysate at 40 ug

Primary: Anti-GLUT2 (SL10379R) at 1/300 dilution

Secondary: IRDye800CW Goat Anti-Rabbit IgG at 1/20000 dilution

Predicted band size: 54 kD

Observed band size: 54 kD



Sample:

Lane 1: Liver (Mouse) Lysate at 40 ug

Lane 2: Kidney (Mouse) Lysate at 40 ug

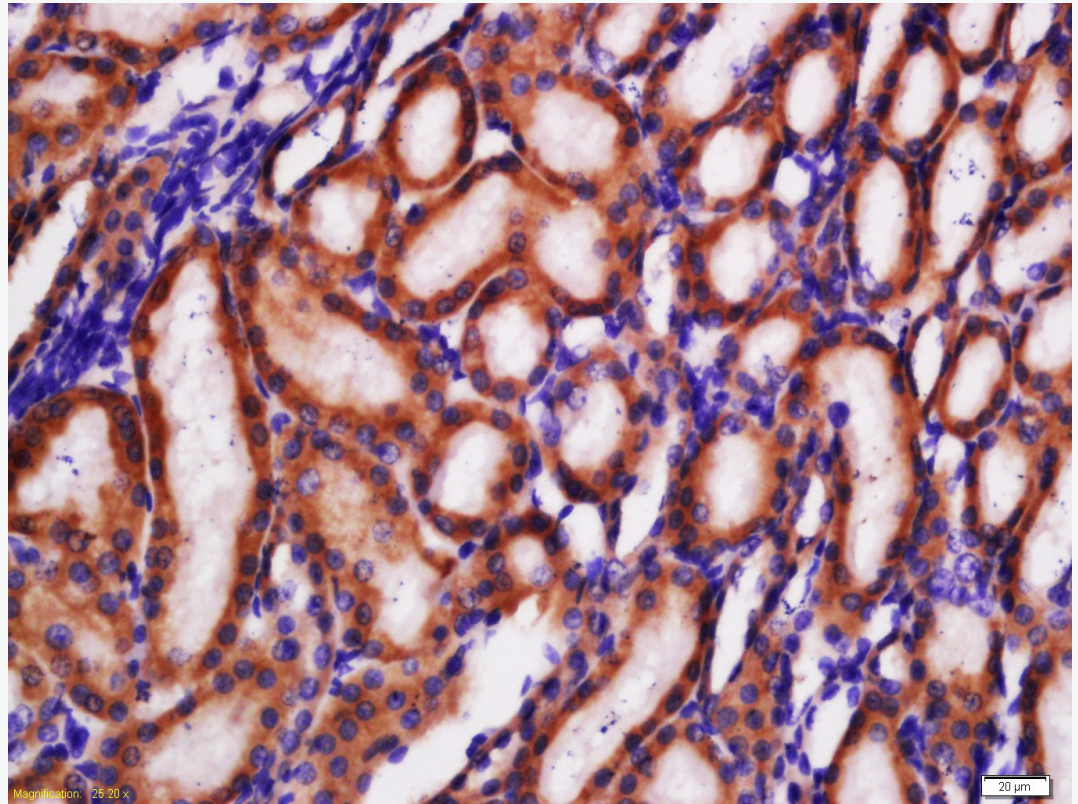
Lane 3: Pancreas (Mouse) Lysate at 40 ug

Primary: Anti-GLUT2 (SL10379R) at 1/1000 dilution

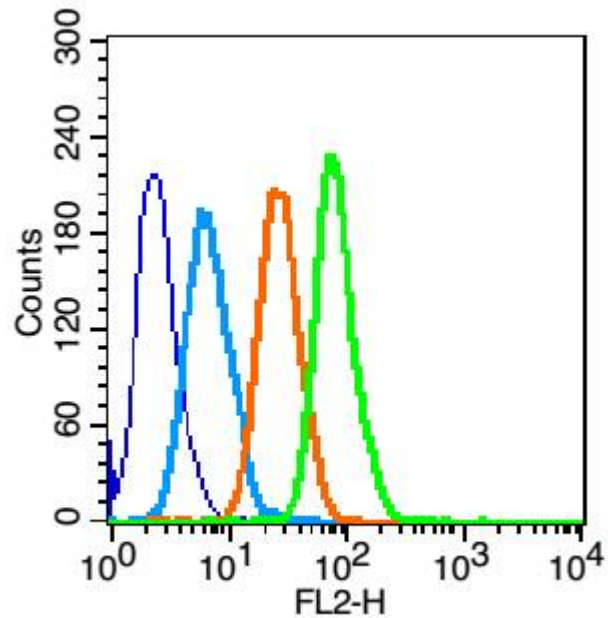
Secondary: IRDye800CW Goat Anti-Rabbit IgG at 1/20000 dilution

Predicted band size: 57/45 kD

Observed band size: 47 kD



Tissue/cell: rat kidney tissue; 4% Paraformaldehyde-fixed and paraffin-embedded;
Antigen retrieval: citrate buffer (1M, pH 6.0), Boiling bathing for 15min; Block endogenous peroxidase by 3% Hydrogen peroxide for 30min; Blocking buffer (normal goat serum,C-0005) at 37°C for 20 min;
Incubation: Anti-GLUT2 Polyclonal Antibody, Unconjugated(SL10379R) 1:200, overnight at 4°C, followed by conjugation to the secondary antibody(SP-0023) and DAB(C-0010) staining



Blank control (blue line): Hep G2(fixed with 70% ethanol Overnight at 4°C).

Primary Antibody (green line): Rabbit Anti-GLUT2 antibody (SL10379R),Dilution:
1μg /10⁶ cells;

Isotype Control Antibody (orange line): Rabbit IgG .

Secondary Antibody (white blue line): Goat anti-rabbit IgG-PE,Dilution: 1μg /test.