



## Rabbit Anti-CD62L antibody

SL1036R

**Product Name** CD62L**Chinese Name** L 选择素抗体**Alias** L-Selectin; A.11; AI528707; CD62 antigen ligand; CD62 antigen-like family member L; gp90 MEL; hLHRc; IgA nephropathy, susceptibility to, included; L Selectin; LAM1; LECAM1; LEU8; Leukocyte adhesion molecule 1; Leukocyte surface antigen Leu8; Leukocyte-endothelial cell adhesion molecule 1; LNHR; LSEL; Ly-22; Ly-m22; Lyam-1; LYAM1; Lymph node homing receptor; Lymphocyte adhesion molecule 1; Lymphocyte antigen 22; Lymphocyte surface MEL-14 antigen; PLNHR; Selectin L; Selectin, lymphocyte; SELL; TQ1; LYAM1\_MOUSE.**Research Area** Cardiovascular Cell biology immunology Stem cells Cell Surface Molecule lymphocyte t-lymphocyte**Immunogen Species** Rabbit**Clonality** Polyclonal**React Species** Mouse,Rat (predicted:Cow,Rabbit)**Applications** WB=1:500-2000,IHC-P=1:100-500,IHC-F=1:100-500,IF=1:100-500,Flow-Cyt=1 $\mu$ g/Test  
(Paraffin sections need antigen repair)  
not yet tested in other applications.  
optimal dilutions/concentrations should be determined by the end user.**Theoretical molecular weight** 37kDa**Cellular localization** The cell membrane**Form** Liquid**Concentration** 1mg/ml**immunogen** KLH conjugated synthetic peptide derived from mouse CD62L: 301-372/372  
<Cytoplasmic>**Lsotype** IgG**Purification** affinity purified by Protein A**Buffer Solution** 1M TBS(pH7.4) with 1% BSA, 3% Proclin300 and 50% Glycerol.

---

<b>Storage</b>	Shipped at 4°C. Store at -20 °C for one year. Avoid repeated freeze/thaw cycles.
<b>Attention</b>	This product as supplied is intended for research use only, not for use in human, therapeutic or diagnostic applications.
<b>PubMed</b>	<a href="#">PubMed</a> This gene encodes a cell surface adhesion molecule that belongs to a family of adhesion/homing receptors. The encoded protein contains a C-type lectin-like domain, a calcium-binding epidermal growth factor-like domain, and two short complement-like repeats. The gene product is required for binding and subsequent rolling of leucocytes on endothelial cells, facilitating their migration into secondary lymphoid organs and inflammation sites. Single-nucleotide polymorphisms in this gene have been associated with various diseases including immunoglobulin A nephropathy. Alternatively spliced transcript variants have been found for this gene. [provided by RefSeq, Oct 2009]
<b>Product Detail</b>	<b>Function:</b> Cell surface adhesion protein. Mediates the adherence of lymphocytes to endothelial cells of high endothelial venules in peripheral lymph nodes. Promotes initial tethering and rolling of leukocytes in endothelia.
	<b>Subunit:</b> Interaction with PSGL1/SELPLG and PODXL2 is required for promoting recruitment and rolling of leukocytes. This interaction is dependent on the sialyl Lewis X glycan modification of PSGL1 and PODXL2, and tyrosine sulfation modifications of PSGL1. Sulfation on 'Tyr-51' of PSGL1 is important for L-selectin binding.
	<b>Subcellular Location:</b> Membrane; Single-pass type I membrane protein.
	<b>Tissue Specificity:</b> Expressed in B-cell lines and T-lymphocytes.
	<b>Similarity:</b> Belongs to the selectin/LECAM family. Contains 1 C-type lectin domain. Contains 1 EGF-like domain. Contains 2 Sushi (CCP/SCR) domains.
	<b>SWISS:</b> P18337
	<b>Gene ID:</b> 20343
<b>Database links:</b>	

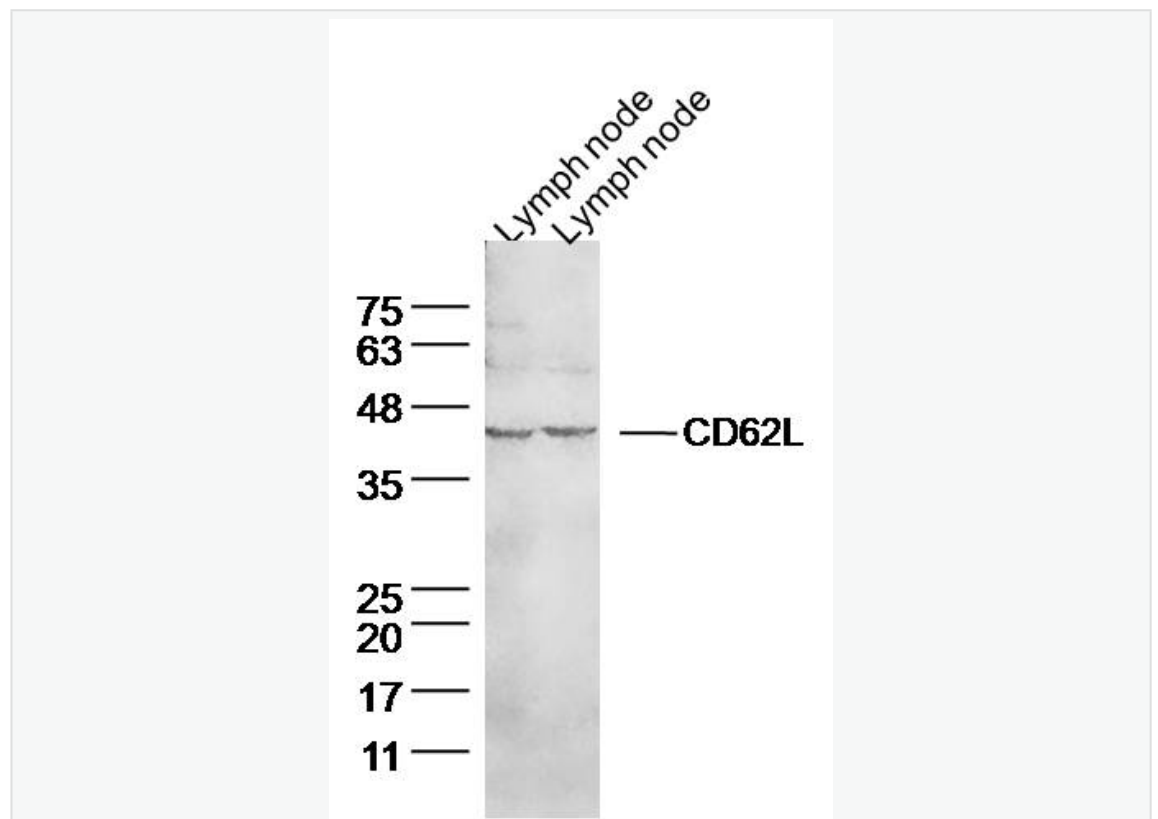
[Entrez Gene: 20343](#) Mouse

[SwissProt: P18337](#) Mouse

[Unigene: 1461](#) Mouse

属于 endothelial cells 白 Cell adhesion molecule, 主要在 lymphocyte 表达,lymphocyte 型选择素。 <

Product  
Picture



Sample:

Lymph node (Mouse) Lysate at 40 ug

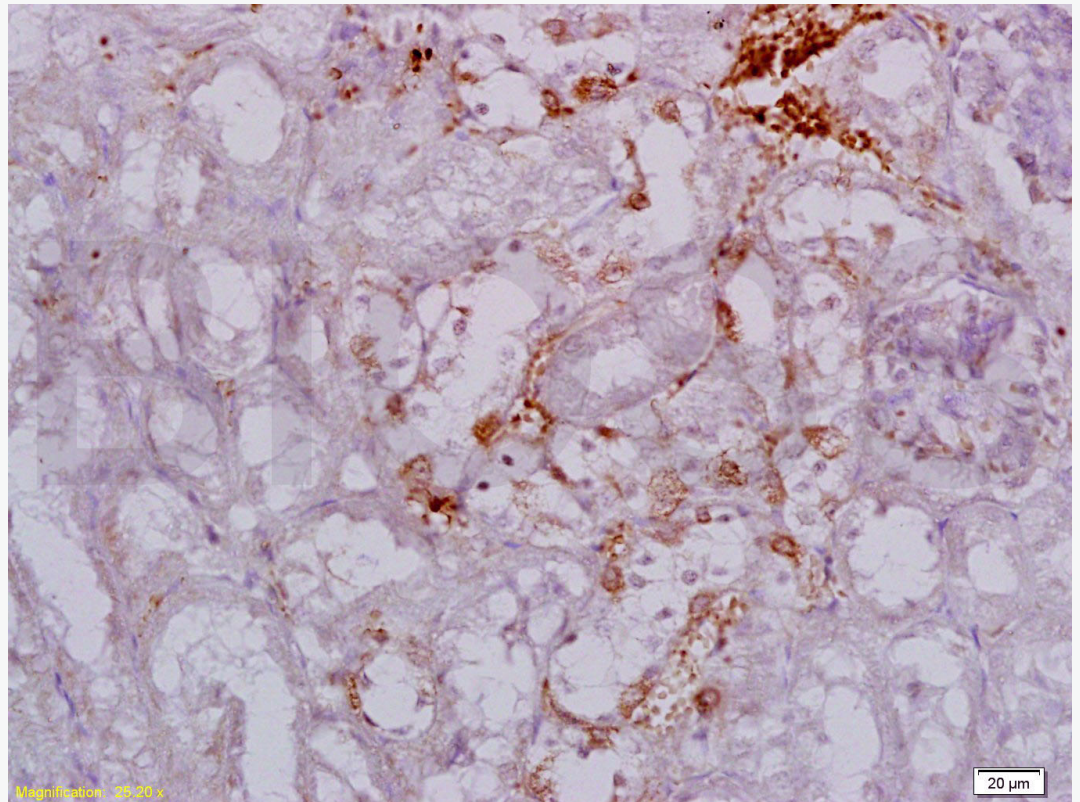
Lymph node (Rat) Lysate at 40 ug

Primary: Anti- CD62L (SL1036R) at 1/300 dilution

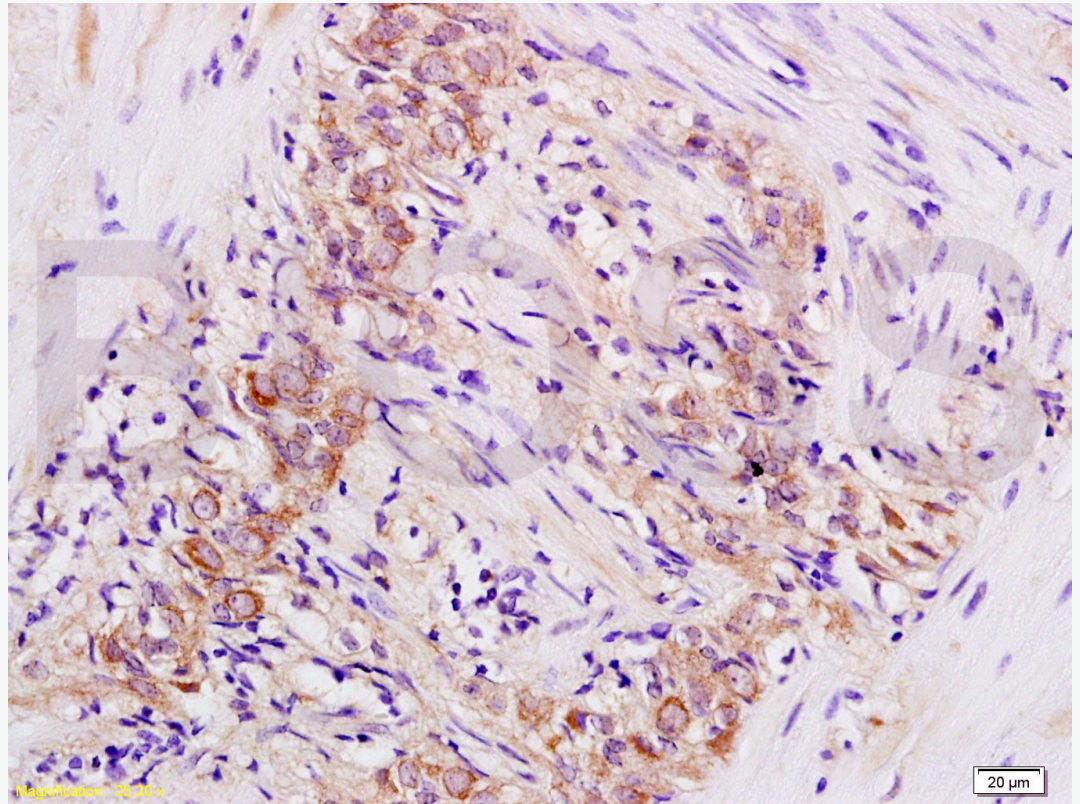
Secondary: IRDye800CW Goat Anti-Rabbit IgG at 1/20000 dilution

Predicted band size: 37 kD

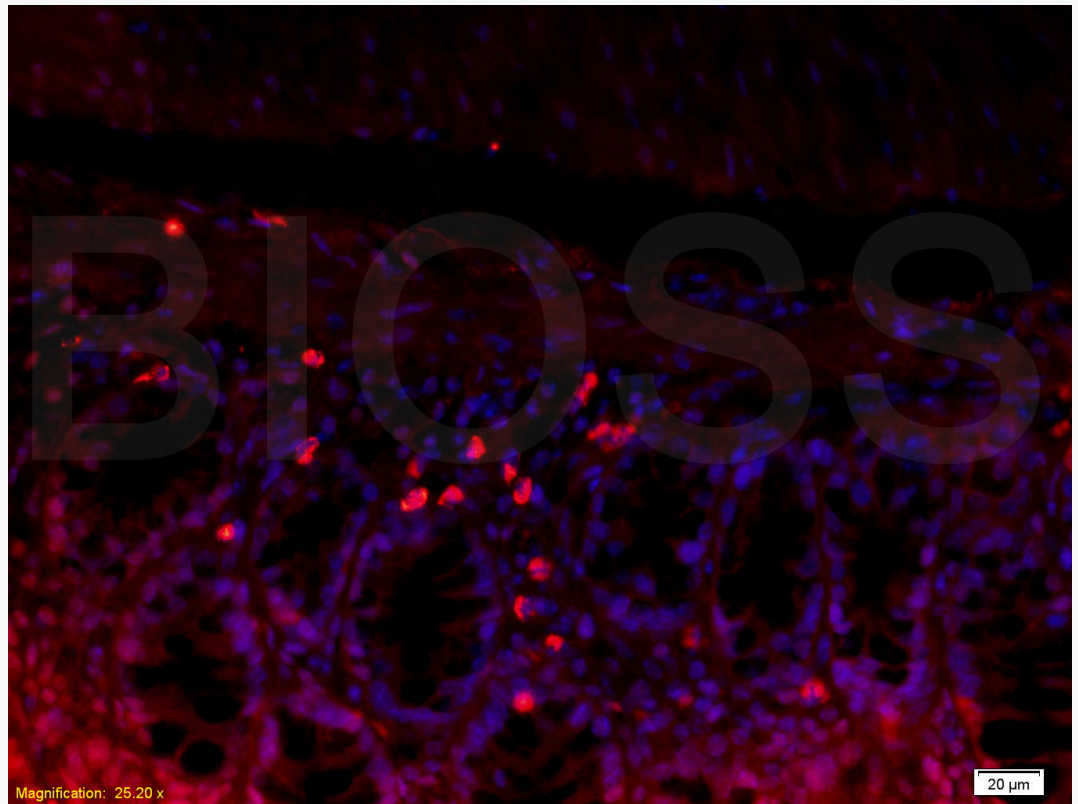
Observed band size: 43 kD



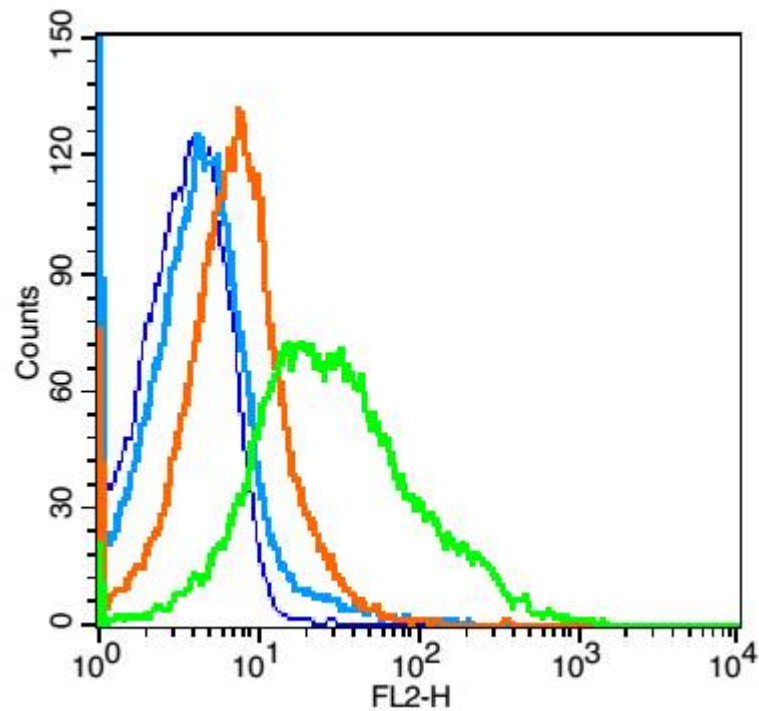
Tissue/cell: mouse kidney tissue; 4% Paraformaldehyde-fixed and paraffin-embedded;  
Antigen retrieval: citrate buffer ( 1M, pH 6.0 ), Boiling bathing for 15min; Block  
endogenous peroxidase by 3% Hydrogen peroxide for 30min; Blocking buffer (normal  
goat serum,C-0005) at 37°C for 20 min;  
Incubation: Anti-L-Selectin Polyclonal Antibody, Unconjugated(SL1036R) 1:200,  
overnight at 4°C, followed by conjugation to the secondary antibody(SP-0023) and  
DAB(C-0010) staining



Tissue/cell: rat colon tissue; 4% Paraformaldehyde-fixed and paraffin-embedded;  
Antigen retrieval: citrate buffer ( 1M, pH 6.0 ), Boiling bathing for 15min; Block endogenous peroxidase by 3% Hydrogen peroxide for 30min; Blocking buffer (normal goat serum,C-0005) at 37°C for 20 min;  
Incubation: Anti-L-Selectin Polyclonal Antibody, Unconjugated(SL1036R) 1:200, overnight at 4°C, followed by conjugation to the secondary antibody(SP-0023) and DAB(C-0010) staining



Tissue/cell: rat colitis tissue;4% Paraformaldehyde-fixed and paraffin-embedded;  
Antigen retrieval: citrate buffer ( 1M, pH 6.0 ), Boiling bathing for 15min; Blocking  
buffer (normal goat serum,C-0005) at 37°C for 20 min;  
Incubation: Anti-L-Selectin Polyclonal Antibody, Unconjugated(SL1036R) 1:200,  
overnight at 4°C; The secondary antibody was Goat Anti-Rabbit IgG, Cy3  
conjugated(SL0295G-Cy3)used at 1:200 dilution for 40 minutes at 37°C.  
DAPI(5ug/ml,blue,C-0033) was used to stain the cell nuclei



Blank control: mouse spleen cells (blue).

Primary Antibody: Rabbit Anti- CD62L antibody(SL1036R), Dilution: 1 $\mu$ g in 100  $\mu$ L  
1X PBS containing 0.5% BSA;

Isotype Control Antibody: Rabbit IgG(orange), used under the same conditions );

Secondary Antibody: Goat anti-rabbit IgG-PE(white blue), Dilution: 1:200 in 1 X PBS  
containing 0.5% BSA.

#### Protocol

The cells were fixed with 2% paraformaldehyde (10 min). Primary antibody (SL1036R, 1 $\mu$ g /1x10<sup>6</sup> cells) were incubated for 30 min on the ice, followed by 1 X PBS containing 0.5% BSA + 1 0% goat serum (15 min) to block non-specific protein-protein interactions. Then the Goat Anti-rabbit IgG/PE antibody was added



into the blocking buffer mentioned above to react with the primary antibody at 1/200 dilution for 30 min on ice. Acquisition of 20,000 events was performed.