

## Rabbit Anti-SLFNL1 antibody

SL10360R

**Product Name** SLFNL1

**Chinese Name** SLFNL1 抗体

**Alias** FLJ23878; MGC43873; OTTHUMP00000006326; OTTHUMP00000006327; OTTHUMP00000006328; Schlafen like 1; Schlafen like protein 1; Schlafen-like protein 1; SLFNL 1; Slfnl1; SLNL1\_HUMAN.

**Research Area** Cell biology

**Immunogen Species** Rabbit

**Clonality** Polyclonal

**React Species** Mouse,Rat (predicted:Human,Horse,Rabbit)

**Applications** IHC-P=1:100-500,IHC-F=1:100-500,IF=1:100-500 (Paraffin sections need antigen repair)  
not yet tested in other applications.  
optimal dilutions/concentrations should be determined by the end user.

**Theoretical molecular weight** 45kDa

**Cellular localization** The cell membrane

**Form** Liquid

**Concentration** 1mg/ml

**immunogen** KLH conjugated synthetic peptide derived from human SLFNL1: 231-330/407

**Lsotype** IgG

**Purification** affinity purified by Protein A

**Buffer Solution** 1M TBS(pH7.4) with 1% BSA, 3% Proclin300 and 50% Glycerol.

**Storage** Shipped at 4°C. Store at -20 °C for one year. Avoid repeated freeze/thaw cycles.

**Attention** This product as supplied is intended for research use only, not for use in human, therapeutic or diagnostic applications.

**PubMed** [PubMed](#)



---

SPTLC1 (serine palmitoyltransferase 1), also known as LCB1, and SPTLC2 (serine palmitoyltransferase 2), also known as LCB2, together catalyze sphingolipid biosynthesis by converting L-serine and palmitoyl-CoA to 3-oxosphinganine, utilizing pyridoxal 5'-phosphate as a cofactor. Increases in transepidermal water loss triggers upregulation of serine palmitoyltransferase mRNA expression in humans. Deficiencies in wild type SPTLC1 and SPTLC2 can lead to hereditary sensory neuropathy, atopic eczema, and psoriasis

**Similarity:**

Belongs to the Schlafen family.

**Product  
Detail**

**SWISS:**

Q499Z3

**Gene ID:**

200172

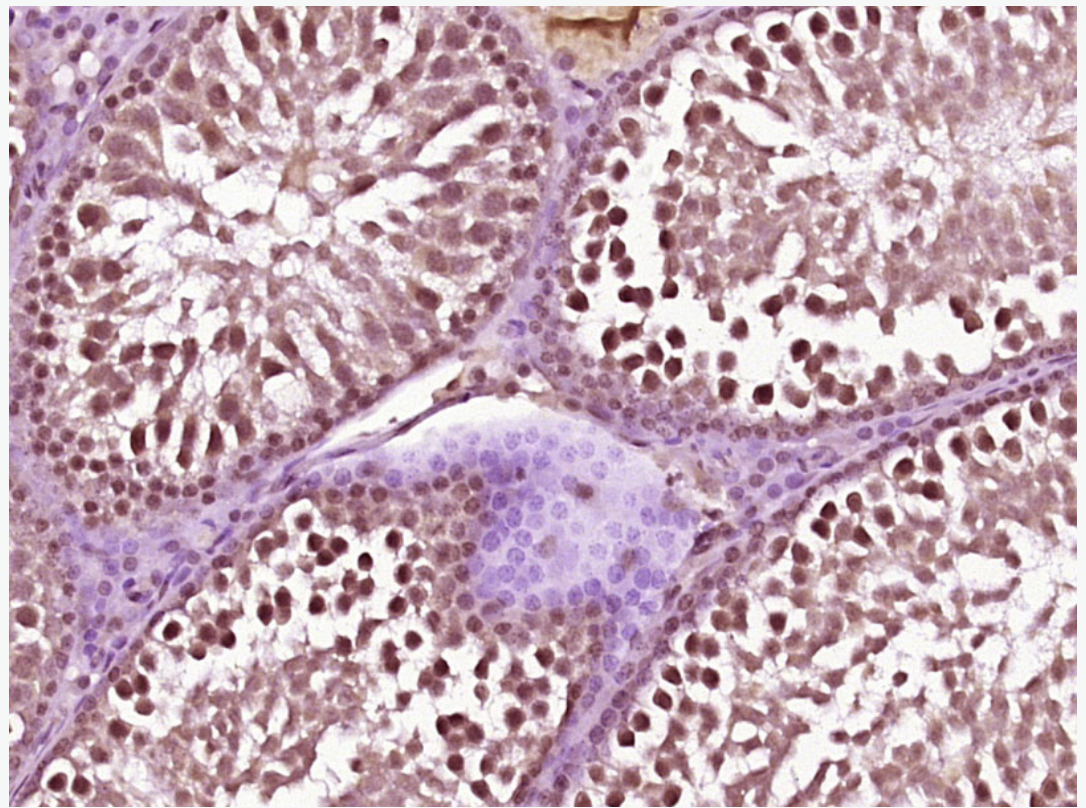
**Database links:**

[Entrez Gene: 200172](#) Human

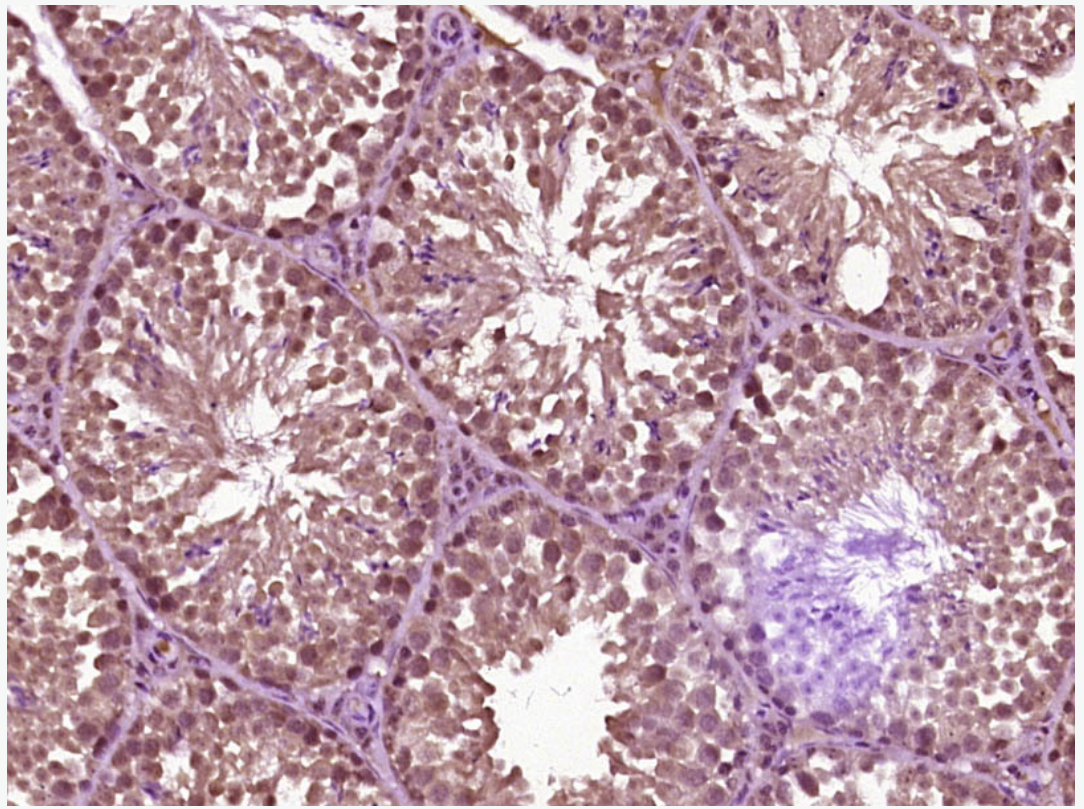
[SwissProt: Q499Z3](#) Human

[Unigene: 194609](#) Human

**Product  
Picture**



Paraformaldehyde-fixed, paraffin embedded (Rat testis); Antigen retrieval by boiling in sodium citrate buffer (pH6.0) for 15min; Block endogenous peroxidase by 3% hydrogen peroxide for 20 minutes; Blocking buffer (normal goat serum) at 37°C for 30min; Antibody incubation with (SLFN1) Polyclonal Antibody, Unconjugated (SL10360R) at 1:400 overnight at 4°C, followed by operating according to SP Kit(Rabbit) (sp-0023) instructions and DAB staining.



Paraformaldehyde-fixed, paraffin embedded (Mouse testis); Antigen retrieval by boiling in sodium citrate buffer (pH6.0) for 15min; Block endogenous peroxidase by 3% hydrogen peroxide for 20 minutes; Blocking buffer (normal goat serum) at 37°C for 30min; Antibody incubation with (SLFN1) Polyclonal Antibody, Unconjugated (SL10360R) at 1:400 overnight at 4°C, followed by operating according to SP Kit(Rabbit) (sp-0023) instructions and DAB staining.