

## Rabbit Anti-Inhibin Alpha antibody

SL1032R

**Product Name** Inhibin Alpha

**Chinese Name** 抑制素 A/Inhibin  $\alpha$  抗体

**Alias** A inhibin subunit precursor; IHA; INHA; Inhibin alpha chain; Inhibin alpha chain precursor; Inhibin alpha subunit; INHA\_HUMAN.

**Research Area** Tumour Signal transduction Growth factors and hormones

**Immunogen Species** Rabbit

**Clonality** Polyclonal

**React Species** Mouse, Rat, (predicted: Human, )

**Applications** WB=1:500-2000,IHC-P=1:100-500,IHC-F=1:100-500,IF=1:100-500 (Paraffin sections need antigen repair)  
not yet tested in other applications.  
optimal dilutions/concentrations should be determined by the end user.

**Theoretical molecular weight** 15kDa

**Cellular localization** Secretory protein

**Form** Liquid

**Concentration** 1mg/ml

**immunogen** KLH conjugated synthetic peptide derived from mouse Inhibin Alpha: 301-366/366

**Lsotype** IgG

**Purification** affinity purified by Protein A

**Buffer Solution** 1M TBS(pH7.4) with 1% BSA, 3% Proclin300 and 50% Glycerol.

**Storage** Shipped at 4°C. Store at -20 °C for one year. Avoid repeated freeze/thaw cycles.

**Attention** This product as supplied is intended for research use only, not for use in human, therapeutic or diagnostic applications.

**PubMed** [PubMed](#)

**Product** This gene encodes a member of the TGF-beta (transforming growth factor-beta)

---

## Detail

superfamily of proteins. The encoded preproprotein is proteolytically processed to generate multiple peptide products, including the alpha subunit of the inhibin A and B protein complexes. These complexes negatively regulate follicle stimulating hormone secretion from the pituitary gland. Inhibins have also been implicated in regulating numerous cellular processes including cell proliferation, apoptosis, immune response and hormone secretion. Mutations in this gene may be associated with male infertility and premature ovarian failure in female human patients. [provided by RefSeq, Aug 2016]

### Function:

Inhibins and activins inhibit and activate, respectively, the secretion of follitropin by the pituitary gland. Inhibins/activins are involved in regulating a number of diverse functions such as hypothalamic and pituitary hormone secretion, gonadal hormone secretion, germ cell development and maturation, erythroid differentiation, insulin secretion, nerve cell survival, embryonic axial development or bone growth, depending on their subunit composition. Inhibins appear to oppose the functions of activins.

### Subunit:

Dimeric, linked by one or more disulfide bonds. Inhibin A is a dimer of alpha and beta-A. Inhibin B is a dimer of alpha and beta-B.

### Subcellular Location:

Secreted.

### Tissue Specificity:

Originally found in ovary (granulosa cells) and testis (Sertoli cells), but widely distributed in many tissues including brain and placenta. In adrenal cortex expression is limited to the zona reticularis and the innermost zona fasciculata in the normal gland, extending centripetally into the zona fasciculata in hyperplasia. Also found in adrenocortical tumors. Also expressed in prostate epithelium of benign prostatic hyperplasia, in regions of basal cell hyperplasia and in nonmalignant regions of high grade prostate cancer. Only circulating inhibin B is found in male, whereas circulating inhibins A and B are found in female.

### Post-translational modifications:

Proteolytic processing yields a number of bioactive forms. The 20/23 kDa forms consist solely of the mature alpha chain, the 26/29 kDa forms consist of the most N-terminal propeptide linked through a disulfide bond to the mature alpha chain, the 50/53 kDa forms encompass the entire preproprotein. Each type can be furthermore either mono- or diglycosylated, causing the mass difference.

### Similarity:

Belongs to the TGF-beta family.

**SWISS:**  
Q04997

**Gene ID:**  
3623

**Database links:**

[Entrez Gene: 3623](#) Human

[Entrez Gene: 16322](#) Mouse

[Entrez Gene: 24504](#) Rat

[Omim: 147380](#) Human

[SwissProt: P05111](#) Human

[SwissProt: Q04997](#) Mouse

[SwissProt: P17490](#) Rat

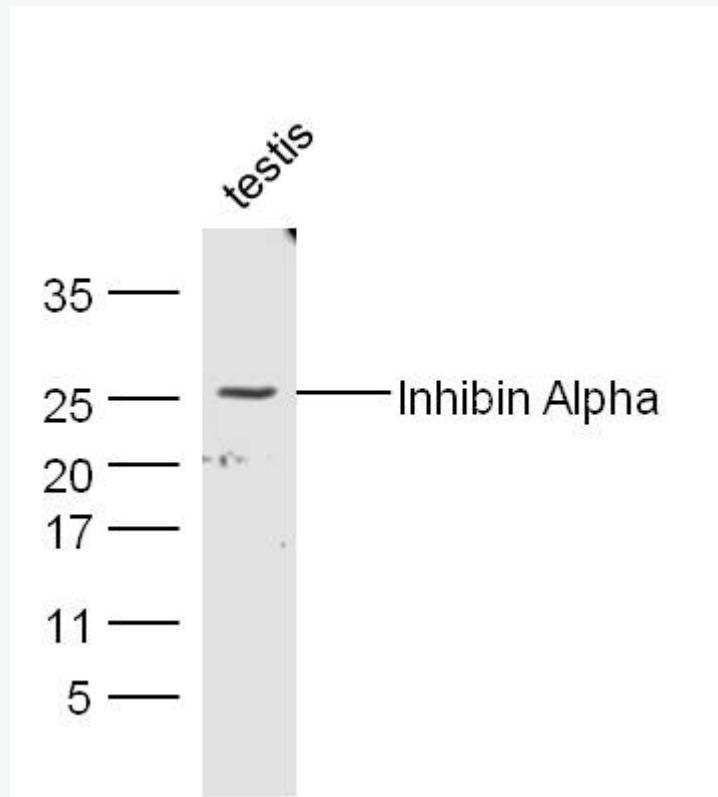
[Unigene: 407506](#) Human

[Unigene: 1100](#) Mouse

[Unigene: 8831](#) Rat

**Inhibin- $\alpha$**  是一种二聚体蛋白质激素，由卵巢粒层细胞产生，能抑制垂体促性腺激素的产生和分泌。该抗体用于研究生殖轴基质性 Tumour。

**Product  
Picture**



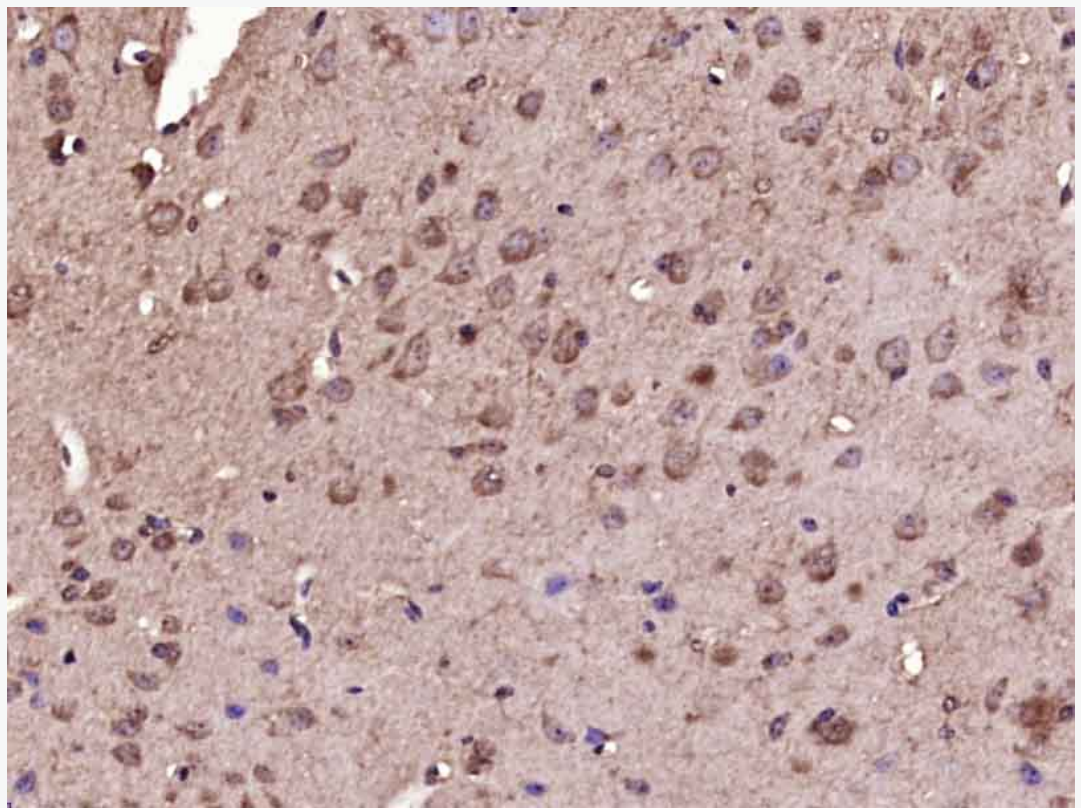
Sample: Testis (Mouse) Lysate at 30 ug

Primary: Anti- Inhibin- $\alpha$  (SL1032R) at 1/300 dilution

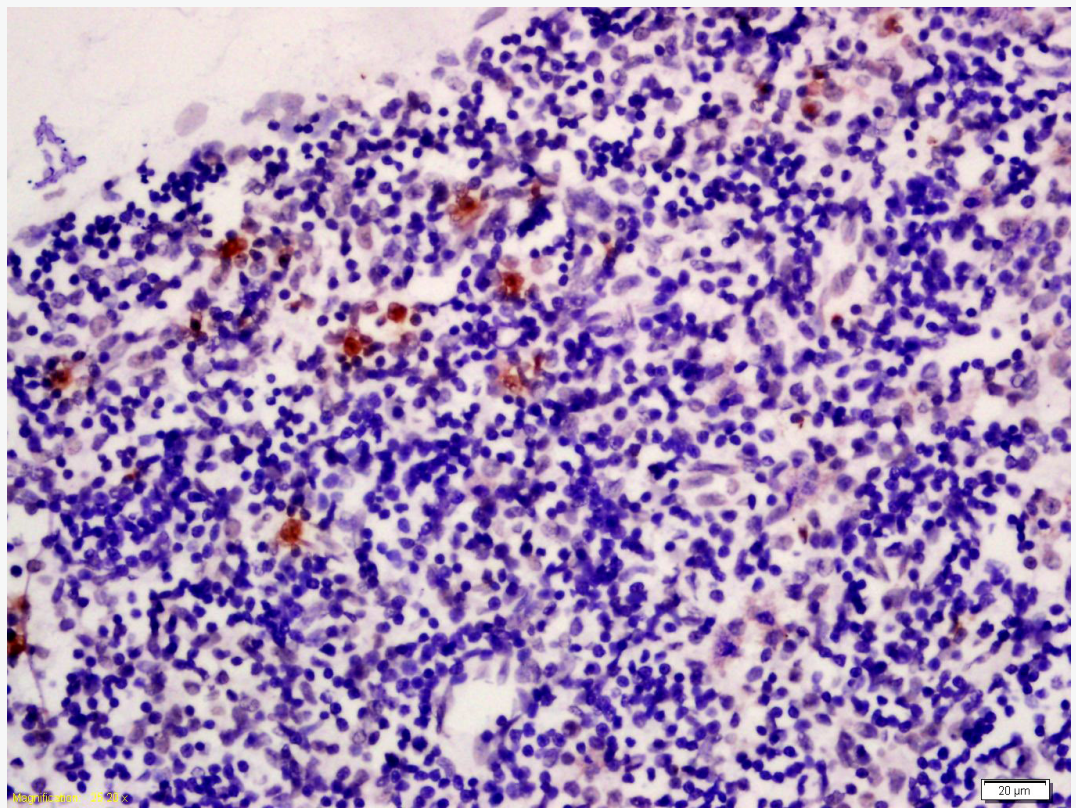
Secondary: IRDye800CW Goat Anti-Rabbit IgG at 1/20000 dilution

Predicted band size: 15 kD

Observed band size: 25 kD



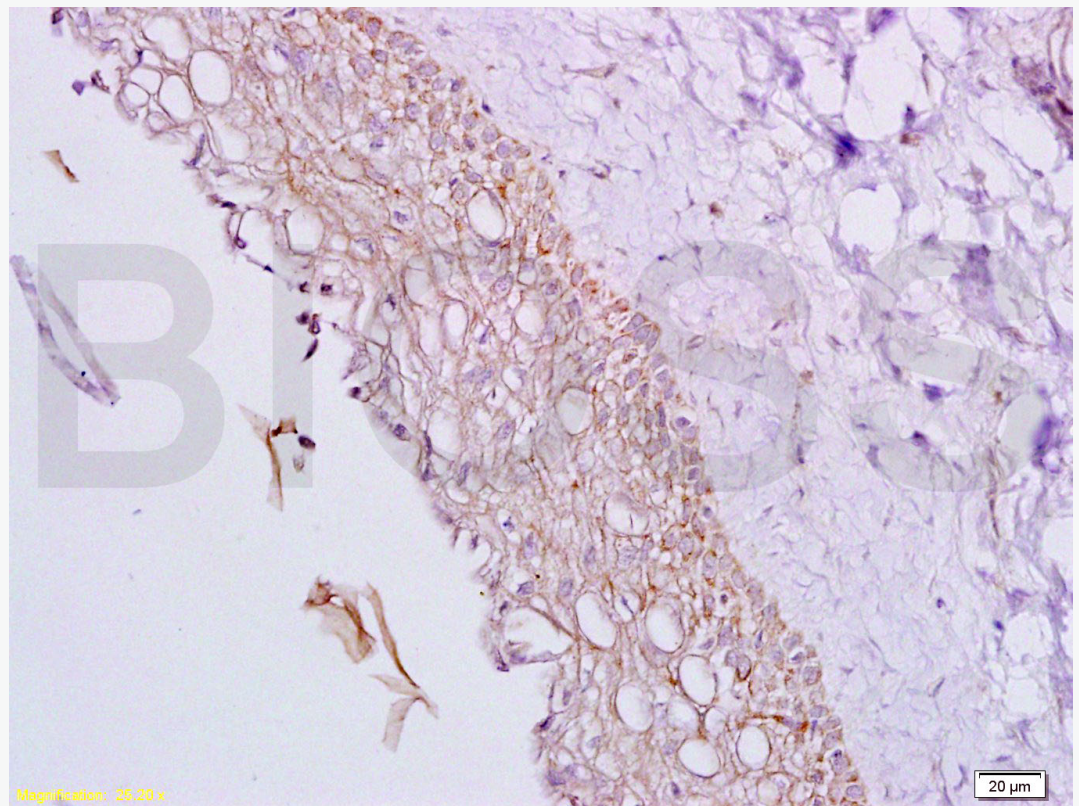
Paraformaldehyde-fixed, paraffin embedded (Mouse brain); Antigen retrieval by boiling in sodium citrate buffer (pH6.0) for 15min; Block endogenous peroxidase by 3% hydrogen peroxide for 20 minutes; Blocking buffer (normal goat serum) at 37°C for 30min; Antibody incubation with (Inhibin Alpha) Polyclonal Antibody, Unconjugated (SL1032R) at 1:400 overnight at 4°C, followed by operating according to SP Kit(Rabbit) (sp-0023) instructions and DAB staining.



Tissue/cell: Rat lymphoid tissue; 4% Paraformaldehyde-fixed and paraffin-embedded;

Antigen retrieval: citrate buffer ( 1M, pH 6.0 ), Boiling bathing for 15min; Block endogenous peroxidase by 3% Hydrogen peroxide for 30min; Blocking buffer (normal goat serum,C-0005) at 37°C for 20 min;

Incubation: Anti-Inhibin Alpha Polyclonal Antibody, Unconjugated(SL1032R) 1:200, overnight at 4°C, followed by conjugation to the secondary antibody(SP-0023) and DAB(C-0010) staining



Tissue/cell: rat ovary tissue; 4% Paraformaldehyde-fixed and paraffin-embedded;  
Antigen retrieval: citrate buffer ( 1M, pH 6.0 ), Boiling bathing for 15min; Block  
endogenous peroxidase by 3% Hydrogen peroxide for 30min; Blocking buffer  
(normal goat serum,C-0005) at 37°C for 20 min;  
Incubation: Anti-Inhibin Alpha Polyclonal Antibody, Unconjugated(SL1032R)  
1:200, overnight at 4°C, followed by conjugation to the secondary  
antibody(SP-0023) and DAB(C-0010) staining