

Rabbit Anti-CD22 antibody

SL10312R

Product Name	CD22
Chinese Name	Blymphocyte 粘附分子 CD22 抗体
Alias	B-cell receptor CD22; B cell receptor CD22 precursor; B lymphocyte cell adhesion molecule; BL CAM; BL-CAM; BLCAM; CD 22; CD22 antigen; CD22 molecule; CD22 protein; Leu14; Lyb8; MGC130020; Sialic acid binding immunoglobulin like lectin 2; SIGLEC 2; SIGLEC2; SIGLEC-2; FLJ22814; MGC130020; CD22_HUMAN; B-lymphocyte cell adhesion molecule; Sialic acid-binding Ig-like lectin 2; Siglec-2; T-cell surface antigen Leu-14.
Research Area	Tumour immunology Stem cells Cell Surface Molecule Cell type markers lymphocyte b-lymphocyte
Immunogen Species	Rabbit
Clonality	Polyclonal
React Species	Human, (predicted: Mouse, Rat, Cow, Horse, Sheep,) WB=1:500-2000,ICC/IF=1:100-500,ELISA=1:5000-10000 (Paraffin sections need antigen repair)
Applications	not yet tested in other applications. optimal dilutions/concentrations should be determined by the end user.
Theoretical molecular weight	91kDa
Cellular localization	The cell membrane
Form	Liquid
Concentration	1mg/ml
immunogen	KLH conjugated synthetic peptide derived from human CD22: 531-630/847 <Extracellular>
Lsotype	IgG
Purification	affinity purified by Protein A
Buffer Solution	1M TBS(pH7.4) with 1% BSA, 3% Proclin300 and 50% Glycerol.
Storage	Shipped at 4°C. Store at -20 °C for one year. Avoid repeated freeze/thaw cycles.

Attention

This product as supplied is intended for research use only, not for use in human, therapeutic or diagnostic applications.

PubMed

[PubMed](#)

Predicted to enable CD4 receptor binding activity; protein phosphatase binding activity; and sialic acid binding activity. Involved in B cell activation; negative regulation of B cell receptor signaling pathway; and regulation of endocytosis. Located in early endosome and recycling endosome. [provided by Alliance of Genome Resources, Nov 2021]

Function:

Mediates B-cell B-cell interactions. May be involved in the localization of B-cells in lymphoid tissues. Binds sialylated glycoproteins; one of which is CD45. Preferentially binds to alpha-2,6-linked sialic acid. The sialic acid recognition site can be masked by cis interactions with sialic acids on the same cell surface. Upon ligand induced tyrosine phosphorylation in the immune response seems to be involved in regulation of B-cell antigen receptor signaling. Plays a role in positive regulation through interaction with Src family tyrosine kinases and may also act as an inhibitory receptor by recruiting cytoplasmic phosphatases via their SH2 domains that block signal transduction through dephosphorylation of signaling molecules.

Subunit:

Product Detail

Predominantly monomer of isoform CD22-beta. Also found as heterodimer of isoform CD22-beta and a shorter isoform. Interacts with PTPN6/SHP-1, LYN, SYK, PIK3R1/PIK3R2 and PLCG1 upon phosphorylation. Interacts with GRB2, INPP5D and SHC1 upon phosphorylation. May form a complex with INPP5D/SHIP, GRB2 and SHC1.

Subcellular Location:

Cell membrane; Single-pass type I membrane protein.

Tissue Specificity:

B-lymphocytes.

Post-translational modifications:

Phosphorylation of Tyr-762, Tyr-807 and Tyr-822 are involved in binding to SYK, GRB2 and SYK, respectively. Phosphorylation of Tyr-842 is involved in binding to SYK, PLCG2 and PIK3R1/PIK3R2.

Similarity:

Belongs to the immunoglobulin superfamily. SIGLEC (sialic acid binding Ig-like lectin) family.

Contains 6 Ig-like C2-type (immunoglobulin-like) domains.

Contains 1 Ig-like V-type (immunoglobulin-like) domain.

SWISS:
P20273

Gene ID:
933

Database links:

[Entrez Gene: 933](#) Human

[Entrez Gene: 12483](#) Mouse

[Entrez Gene: 308501](#) Rat

[Omim: 107266](#) Human

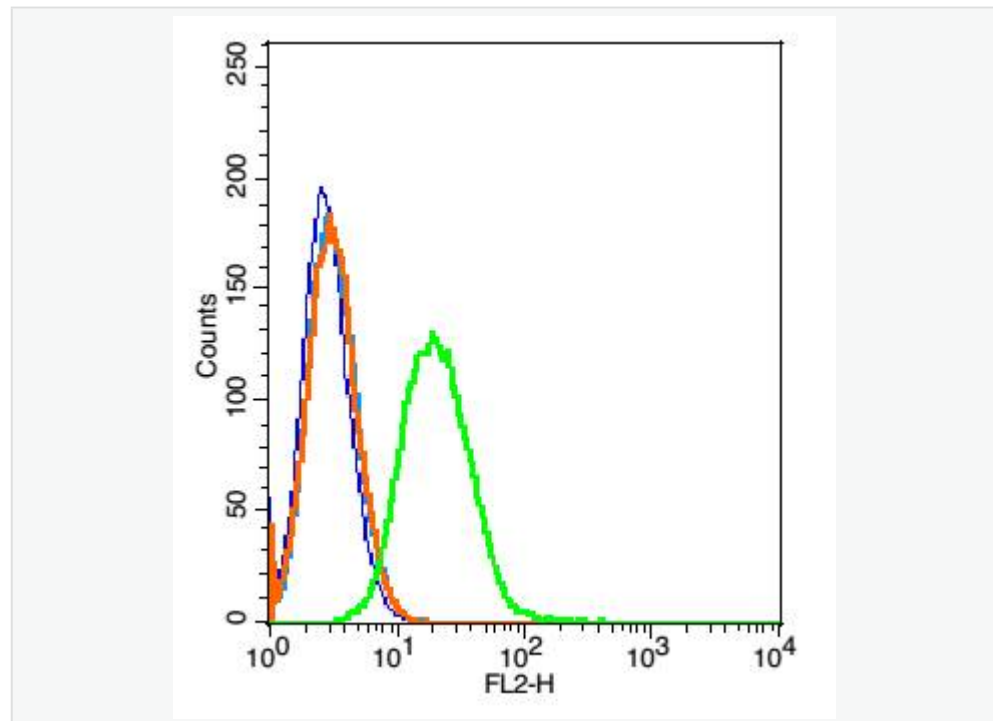
[SwissProt: P20273](#) Human

[SwissProt: P35329](#) Mouse

[Unigene: 579691](#) Human

[Unigene: 260994](#) Mouse

Product Picture



Blank control: Raji cells(blue).

Primary Antibody:Rabbit Anti- CD22 antibody(SL10312R), Dilution:
1 μ g in 100 μ L 1X PBS containing 0.5% BSA;

Isotype Control Antibody: Rabbit IgG(orange) ,used under the same
conditions);

Secondary Antibody: Goat anti-rabbit IgG-PE(white blue), Dilution:
1:200 in 1 X PBS containing 0.5% BSA.