

Rabbit Anti-LXR alpha antibody

SL10311R

Product Name LXR alpha

Chinese Name 肝脏 X 受体抗体

Alias Liver X receptor alpha; LXR a; LXRA; LXRA; NR1H3; NR1H3_HUMAN; Nuclear orphan receptor LXR alpha; Nuclear receptor subfamily 1 group H member 3; Oxysterols receptor LXR alpha; Oxysterols receptor LXR-alpha; RLD 1; RLD1.

Research Area immunology Bacteria and viruses Epigenetics

Immunogen Species Rabbit

Clonality Polyclonal

React Species Human, Rat, (predicted: Mouse, Chicken, Dog, Cow, Horse,)

Applications IHC-P=1:100-500,IHC-F=1:100-500,IF=1:100-500,Flow-Cyt=1ug/test (Paraffin sections need antigen repair)
not yet tested in other applications.
optimal dilutions/concentrations should be determined by the end user.

Theoretical molecular weight 46kDa

Cellular localization The nucleus

Form Liquid

Concentration 1mg/ml

immunogen KLH conjugated synthetic peptide derived from human LXR alpha: 361-447/447

Lsotype IgG

Purification affinity purified by Protein A

Buffer Solution 1M TBS(pH7.4) with 1% BSA, 3% Proclin300 and 50% Glycerol.

Storage Shipped at 4°C. Store at -20 °C for one year. Avoid repeated freeze/thaw cycles.

Attention This product as supplied is intended for research use only, not for use in human, therapeutic or diagnostic applications.

PubMed [PubMed](#)

Peroxisome proliferators include hypolipidemic drugs, herbicides, leukotriene antagonists, and plasticizers; this term arises because they induce an increase in the size and number of peroxisomes. Peroxisomes are subcellular organelles found in plants and animals that contain enzymes for respiration and for cholesterol and lipid metabolism. The action of peroxisome proliferators is thought to be mediated via specific receptors, called PPARs, which belong to the steroid hormone receptor superfamily. PPARs affect the expression of target genes involved in cell proliferation, cell differentiation and in immune and inflammation responses. Three closely related subtypes (alpha, beta/delta, and gamma) have been identified. This gene encodes the subtype PPAR-alpha, which is a nuclear transcription factor. Multiple alternatively spliced transcript variants have been described for this gene, although the full-length nature of only two has been determined. [provided by RefSeq, Jul 2008].

Function:

Orphan receptor. Interaction with RXR shifts RXR from its role as a silent DNA-binding partner to an active ligand-binding subunit in mediating retinoid responses through target genes defined by LXRES. LXRES are DR4-type response elements characterized by direct repeats of two similar hexanucleotide half-sites spaced by four nucleotides. Plays an important role in the regulation of cholesterol homeostasis, regulating cholesterol uptake through MYLIP-dependent ubiquitination of LDLR, VLDLR and LRP8.

**Product
Detail**

Subunit:

Heterodimer of LXRA and RXR.

Subcellular Location:

Cell membrane; Multi-pass membrane protein.

Tissue Specificity:

Nucleus (Potential).

Similarity:

Belongs to the nuclear hormone receptor family. NR1 subfamily. Contains 1 nuclear receptor DNA-binding domain.

SWISS:

Q13133

Gene ID:

10062

Database links:

[Entrez Gene: 10062](#) Human

[Entrez Gene: 22259](#) Mouse

[Entrez Gene: 58852](#) Rat

[Omim: 602423](#) Human

[SwissProt: Q13133](#) Human

[SwissProt: Q9Z0Y9](#) Mouse

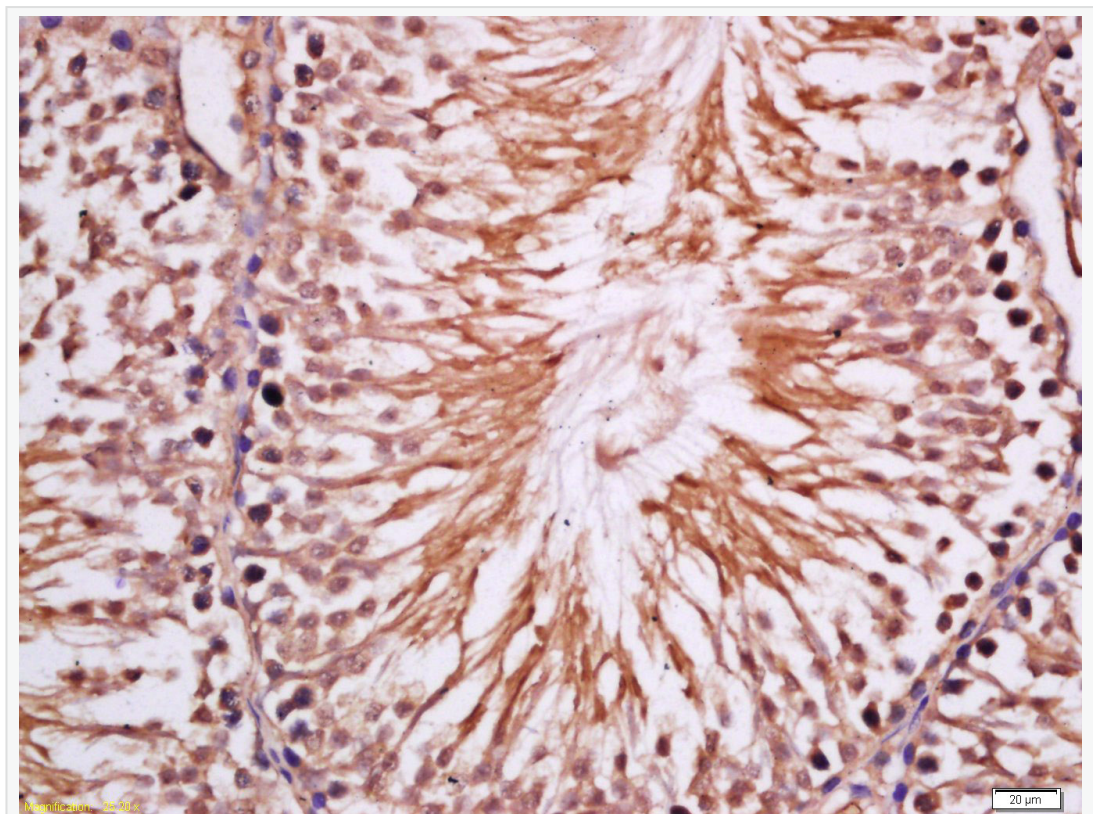
[SwissProt: Q62685](#) Rat

[Unigene: 438863](#) Human

[Unigene: 22690](#) Mouse

[Unigene: 11209](#) Rat

Product Picture

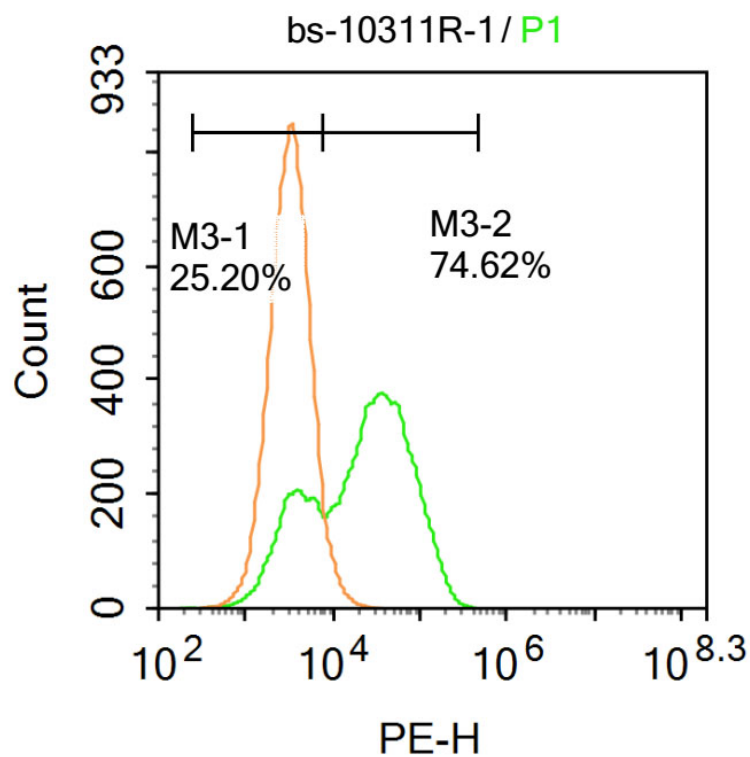


Tissue/cell: Rat testis tissue; 4% Paraformaldehyde-fixed and paraffin-embedded;
Antigen retrieval: citrate buffer (1M, pH 6.0), Boiling bathing for 15min; Block
endogenous peroxidase by 3% Hydrogen peroxide for 30min; Blocking buffer

(normal goat serum,C-0005) at 37°C for 20 min;

Incubation: Anti-LXR alpha Polyclonal Antibody, Unconjugated(SL10311R)

1:200, overnight at 4°C, followed by conjugation to the secondary antibody(SP-0023) and DAB(C-0010) staining



Blank control: Hela.

Primary Antibody (green line): Rabbit Anti-LXR alpha antibody (SL10311R)

Dilution: 1µg /10⁶ cells;

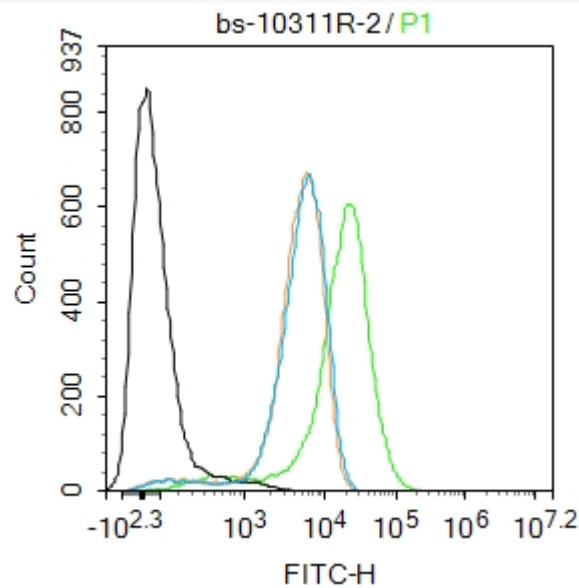
Isotype Control Antibody (orange line): Rabbit IgG .

Secondary Antibody : Goat anti-rabbit IgG-PE

Dilution: 1 μ g /test.

Protocol

The cells were fixed with 4% PFA (10min at room temperature)and then permeabilized with 90% ice-cold methanol for 20 min at-20°C. The cells were then incubated in 5%BSA to block non-specific protein-protein interactions for 30 min at at room temperature .Cells stained with Primary Antibody for 30 min at room temperature. The secondary antibody used for 40 min at room temperature. Acquisition of 20,000 events was performed.



Blank control:THP-1.

Primary Antibody (green line): Rabbit Anti-LXR alpha antibody (SL10311R)

Dilution: 2 μ g /10⁶ cells;

Isotype Control Antibody (orange line): Rabbit IgG.

Secondary Antibody : Goat anti-rabbit IgG-FITC

Dilution: 1 μ g /test.

Protocol

The cells were fixed with 4% PFA (10min at room temperature)and then permeabilized with 90% ice-cold methanol for 20 min at-20°C. The cells were then incubated in 5%BSA to block non-specific protein-protein interactions for 30 min at room temperature .Cells stained with Primary Antibody for 30 min at room temperature. The secondary antibody used for 40 min at room temperature.

Acquisition of 20,000 events was performed.