



## Rabbit Anti-TREM1 antibody

SL10306R

**Product Name** TREM1**Chinese Name** 髓系细胞触发受体 1 抗体**Alias** Triggering receptor expressed on myeloid cells 1; TREM 1; TREM-1; Triggering receptor expressed on monocytes 1; Triggering receptor TREM 1; Triggering receptor TREM1; Triggering-receptor TREM 1; Triggering-receptor TREM-1; Triggering-receptor TREM1; TREM1\_HUMAN; CD354.**Research Area** Cell biology immunology Cell differentiation**Immunogen Species** Rabbit**Clonality** Polyclonal**React Species** Human, Rat,**Applications** WB=1:500-2000,IHC-P=1:100-500,IHC-F=1:100-500,IF=1:100-500,Flow-Cyt=1µg/Test  
(Paraffin sections need antigen repair)  
not yet tested in other applications.  
optimal dilutions/concentrations should be determined by the end user.**Theoretical molecular weight** 24kDa**Cellular localization** The cell membrane Secretory protein**Form** Liquid**Concentration** 1mg/ml**immunogen** KLH conjugated synthetic peptide derived from human TREM1: 151-234/234  
<Extracellular>**Lsotype** IgG**Purification** affinity purified by Protein A**Buffer Solution** 1M TBS(pH7.4) with 1% BSA, 3% Proclin300 and 50% Glycerol.**Storage** Shipped at 4°C. Store at -20 °C for one year. Avoid repeated freeze/thaw cycles.**Attention** This product as supplied is intended for research use only, not for use in human,

therapeutic or diagnostic applications.

## PubMed

[PubMed](#)

This gene encodes a receptor belonging to the Ig superfamily that is expressed on myeloid cells. This protein amplifies neutrophil and monocyte-mediated inflammatory responses triggered by bacterial and fungal infections by stimulating release of pro-inflammatory chemokines and cytokines, as well as increased surface expression of cell activation markers. Alternatively spliced transcript variants encoding different isoforms have been noted for this gene.[provided by RefSeq, Jun 2011].

### Function:

Stimulates neutrophil and monocyte-mediated inflammatory responses. Triggers release of pro-inflammatory chemokines and cytokines, as well as increased surface expression of cell activation markers. Amplifier of inflammatory responses that are triggered by bacterial and fungal infections and is a crucial mediator of septic shock.

### Subunit:

Interacts with TYROBP/DAP12.

### Subcellular Location:

Isoform 1: Cell membrane; Single-pass type I membrane protein (Potential). Isoform 2: Secreted (Potential).

## Product Detail

### Tissue Specificity:

Highly expressed in adult liver, lung and spleen than in corresponding fetal tissue. Also expressed in the lymph node, placenta, spinal cord and heart tissues. Expression is more elevated in peripheral blood leukocytes than in the bone marrow and in normal cells than malignant cells. Expressed at low levels in the early development of the hematopoietic system and in the promonocytic stage and at high levels in mature monocytes. Strongly expressed in acute inflammatory lesions caused by bacteria and fungi. Isoform 2 was detected in the lung, liver and mature monocytes.

### Post-translational modifications:

Glycosylated.

### Similarity:

Contains 1 Ig-like V-type (immunoglobulin-like) domain.

### SWISS:

Q9NP99

### Gene ID:

54210

**Database links:**

[Entrez Gene: 54210](#) Human

[Entrez Gene: 58217](#) Mouse

[Omim: 605085](#) Human

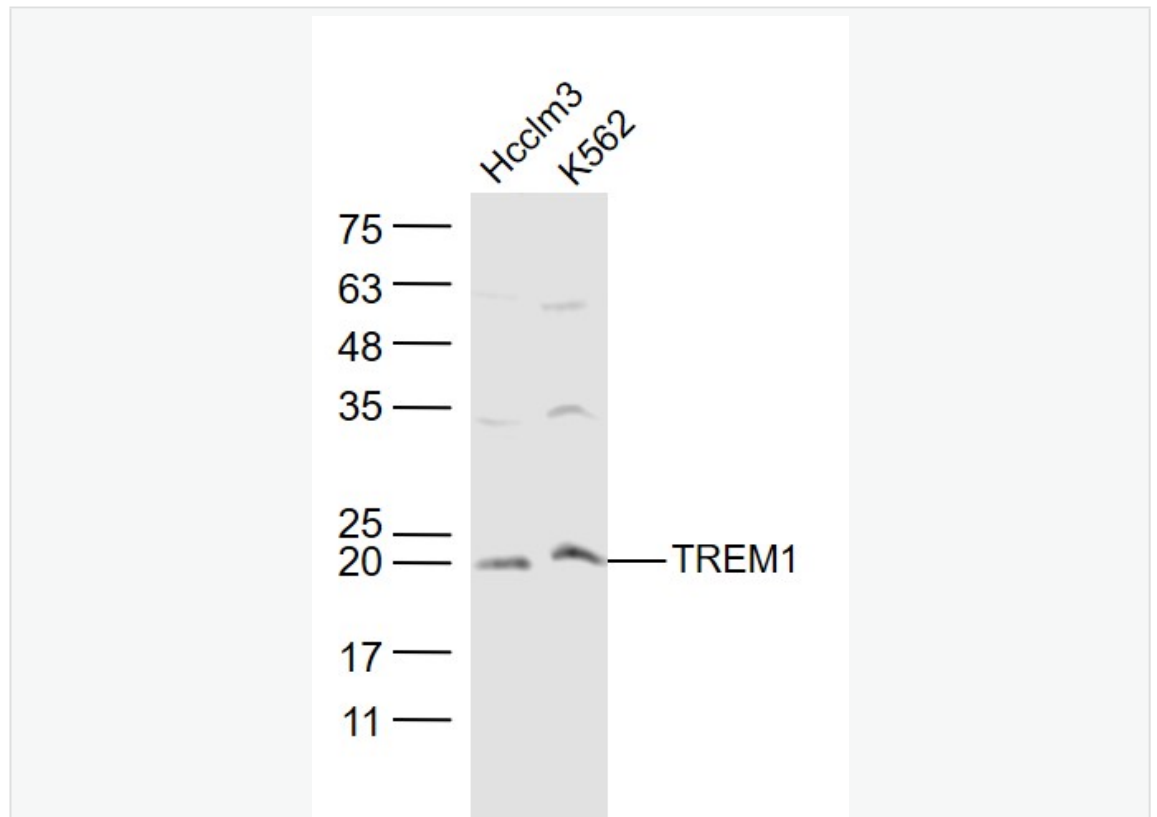
[SwissProt: Q9NP99](#) Human

[SwissProt: Q9JKE2](#) Mouse

[Unigene: 283022](#) Human

[Unigene: 248352](#) Mouse

**Product  
Picture**



Sample:

hcclm3(Human) Cell Lysate at 30 ug

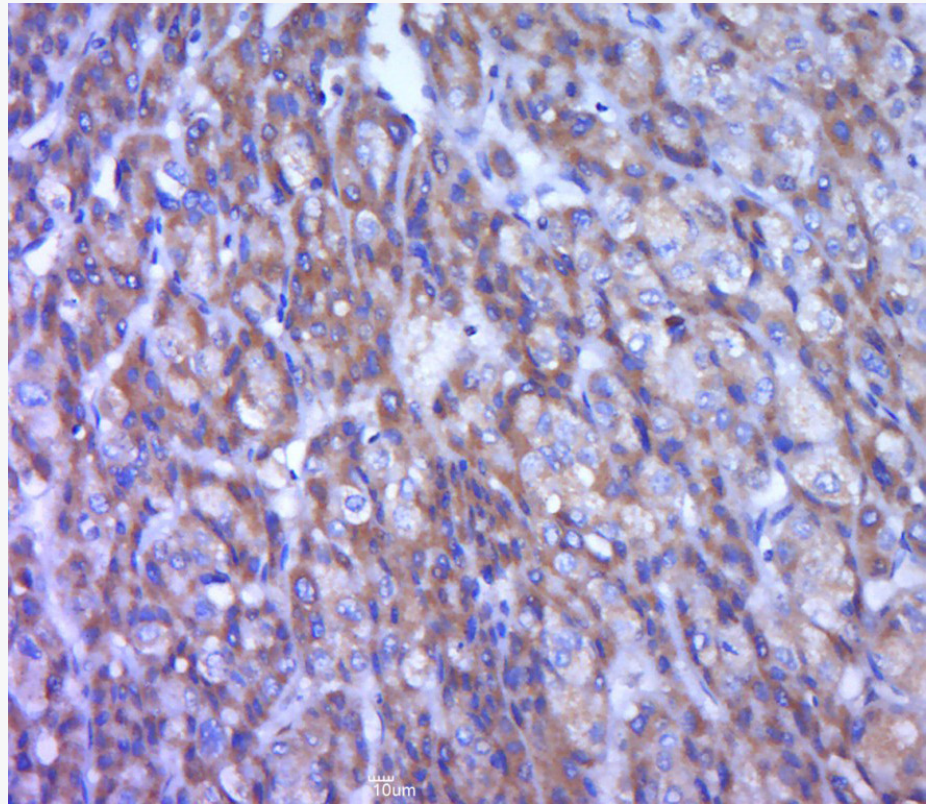
K562(Human) Cell Lysate at 30 ug

Primary: Anti-TREM1 (SL10306R) at 1/300 dilution

Secondary: IRDye800CW Goat Anti-Rabbit IgG at 1/20000 dilution

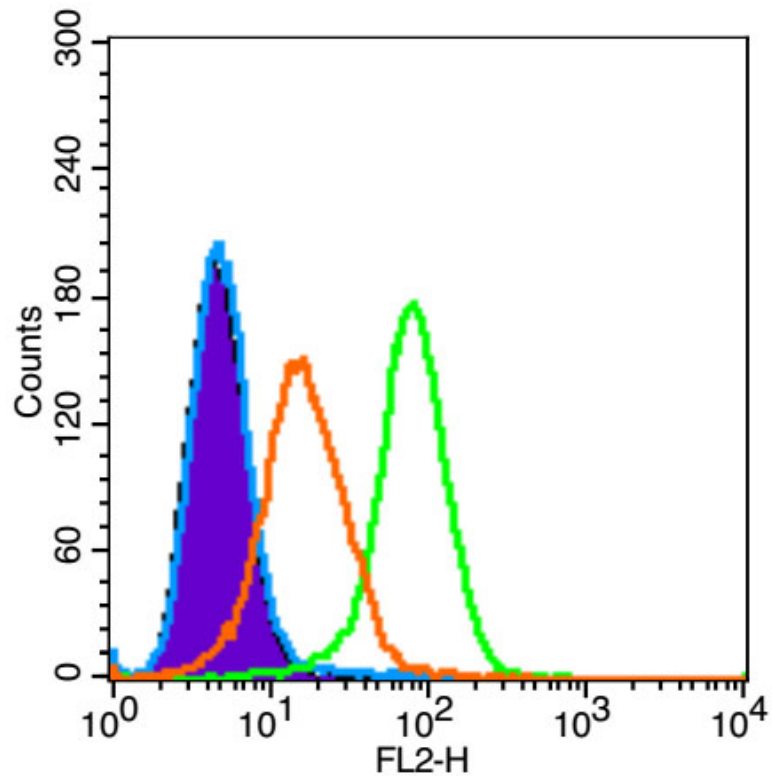
Predicted band size: 24 kD

Observed band size: 21 kD

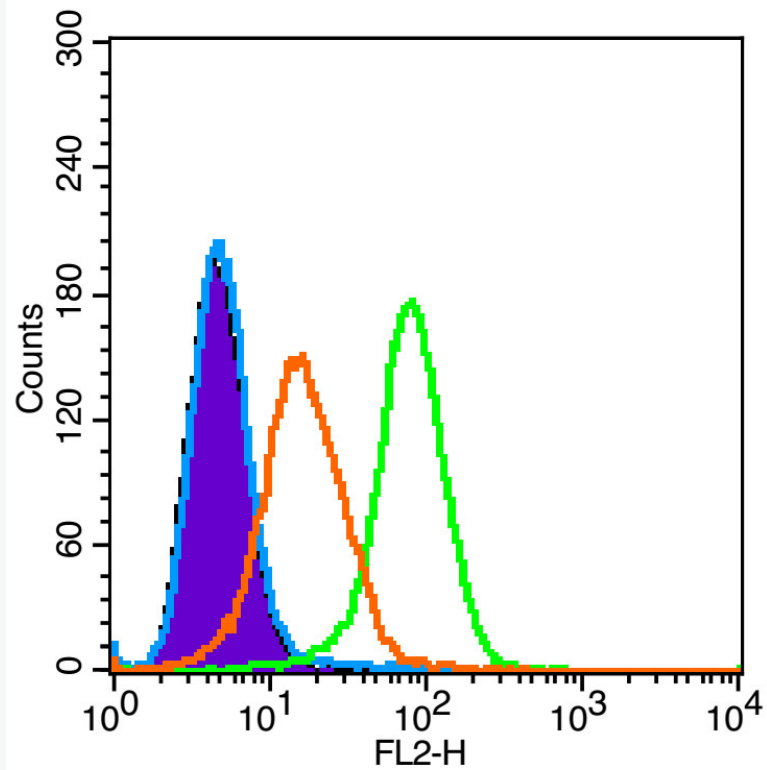


Paraformaldehyde-fixed, paraffin embedded (human liver carcinoma); Antigen retrieval by boiling in sodium citrate buffer (pH6.0) for 15min; Block endogenous peroxidase by 3% hydrogen peroxide for 20 minutes; Blocking buffer (normal goat serum) at 37°C for 30min; Antibody incubation with (TREM1) Polyclonal Antibody, Unconjugated (SL10306R) at 1:400 overnight at 4°C, followed by a conjugated

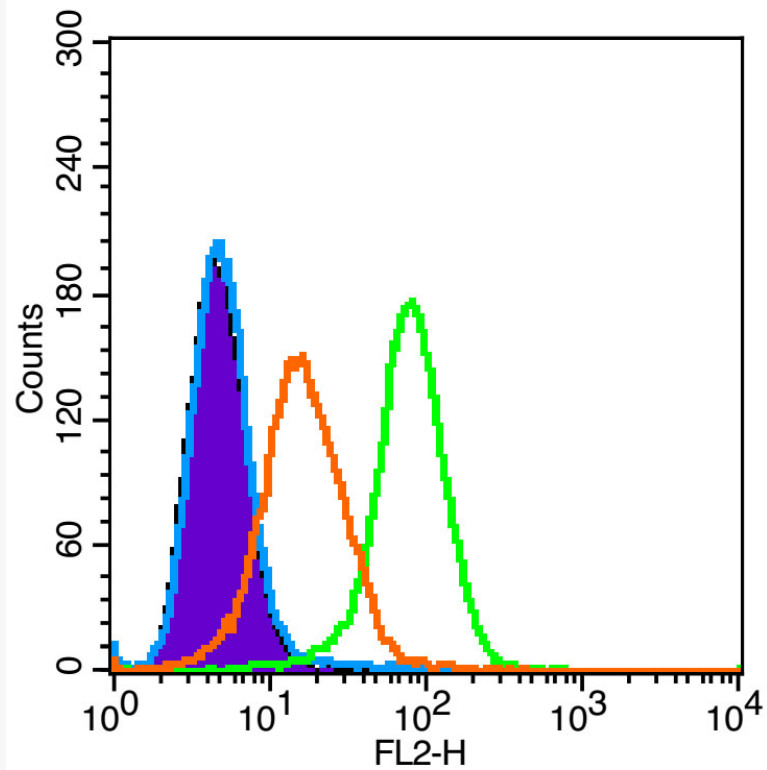
secondary (sp-0023) for 20 minutes and DAB staining.



Primary Antibody:Rabbit anti-TREM1 antibody Supplier catalog number: SL10306R  
Supplier: Bioss Isotype Control Antibody: Rabbit IgG Secondary Antibody: F(ab')<sub>2</sub>  
fragment goat anti-rabbit IgG-PE Supplier: Jackson Lab. Positive control:U937(4%  
paraformaldehyde for 10 min at room temperature)



Primary Antibody:Rabbit anti-TREM1 antibody Supplier catalog number: SL10306R  
Supplier: Bioss Isotype Control Antibody: Rabbit IgG Secondary Antibody: F(ab')<sub>2</sub>  
fragment goat anti-rabbit IgG-PE Supplier: Jackson Lab. Positive control:U937(4%  
paraformaldehyde for 10 min at room temperature)



Primary Antibody:Rabbit anti-TREM1 antibody Supplier catalog number: SL10306R  
Supplier: Bioss Isotype Control Antibody: Rabbit IgG Secondary Antibody: F(ab')<sub>2</sub>  
fragment goat anti-rabbit IgG-PE Supplier: Jackson Lab. Positive control:U937(4%  
paraformaldehyde for 10 min at room temperature)