

Rabbit Anti-KCC2 antibody

SL10295R

Product Name KCC2

Chinese Name 神经细胞钾氯离子 Transporter 抗体

Alias

Electroneutral potassium chloride cotransporter 2; Electroneutral potassium-chloride cotransporter 2; Erythroid K Cl cotransporter 2; Erythroid K-Cl cotransporter 2; Furosemide sensitive K Cl cotransporter; hKCC2; K-Cl cotransporter 2; KCC 2; KCC2; KIAA1176; Neuronal K Cl cotransporter; Neuronal K-Cl cotransporter; S12A5; S12A5_HUMAN; SLC12A5; Solute carrier family 12 (potassium chloride transporter) member 5; Solute carrier family 12 member 5.

Research Area

Cell biology immunology Neurobiology Channel protein

Immunogen Species

Rabbit

Clonality

Polyclonal

React Species

Rat, (predicted: Human, Mouse, Chicken, Dog, Pig, Cow, Horse,)

Applications

IHC-P=1:100-500,IHC-F=1:100-500,IF=1:100-500 (Paraffin sections need antigen repair)
not yet tested in other applications.
optimal dilutions/concentrations should be determined by the end user.

Theoretical molecular weight

123kDa

Cellular localization

The cell membrane

Form

Liquid

Concentration

1mg/ml

immunogen

KLH conjugated synthetic peptide derived from human KCC2: 851-950/1139
<Cytoplasmic>

Lsotype

IgG

Purification

affinity purified by Protein A

Buffer Solution

1M TBS(pH7.4) with 1% BSA, 3% Proclin300 and 50% Glycerol.

Storage

Shipped at 4°C. Store at -20 °C for one year. Avoid repeated freeze/thaw cycles.



Attention

This product as supplied is intended for research use only, not for use in human, therapeutic or diagnostic applications.

PubMed

[PubMed](#)

K-Cl cotransporters are proteins that lower intracellular chloride concentrations below the electrochemical equilibrium potential. The protein encoded by this gene is an integral membrane K-Cl cotransporter that can function in either a net efflux or influx pathway, depending on the chemical concentration gradients of potassium and chloride. The encoded protein can act as a homomultimer, or as a heteromultimer with other K-Cl cotransporters, to maintain chloride homeostasis in neurons. Alternative splicing results in two transcript variants encoding different isoforms. [provided by RefSeq, Sep 2008]

Function:

Mediates electroneutral potassium-chloride cotransport in mature neurons. Transport occurs under isotonic conditions, but is activated 20-fold by cell swelling. Important for Cl(-) homeostasis in neurons.

Subunit:

Homomultimer and heteromultimer with other K-Cl cotransporters. Interacts with AP2A1.

Subcellular Location:

Membrane; Multi-pass membrane protein.

Product Detail

Tissue Specificity:

Brain specific. Detected in neuronal cells.

Similarity:

Belongs to the SLC12A transporter family.

SWISS:

Q9H2X9

Gene ID:

57468

Database links:

[Entrez Gene: 57468](#) Human

[Entrez Gene: 57138](#) Mouse

[Entrez Gene: 171373](#) Rat

[Omim: 606726](#) Human

[SwissProt: Q9H2X9](#) Human

[SwissProt: Q91V14](#) Mouse

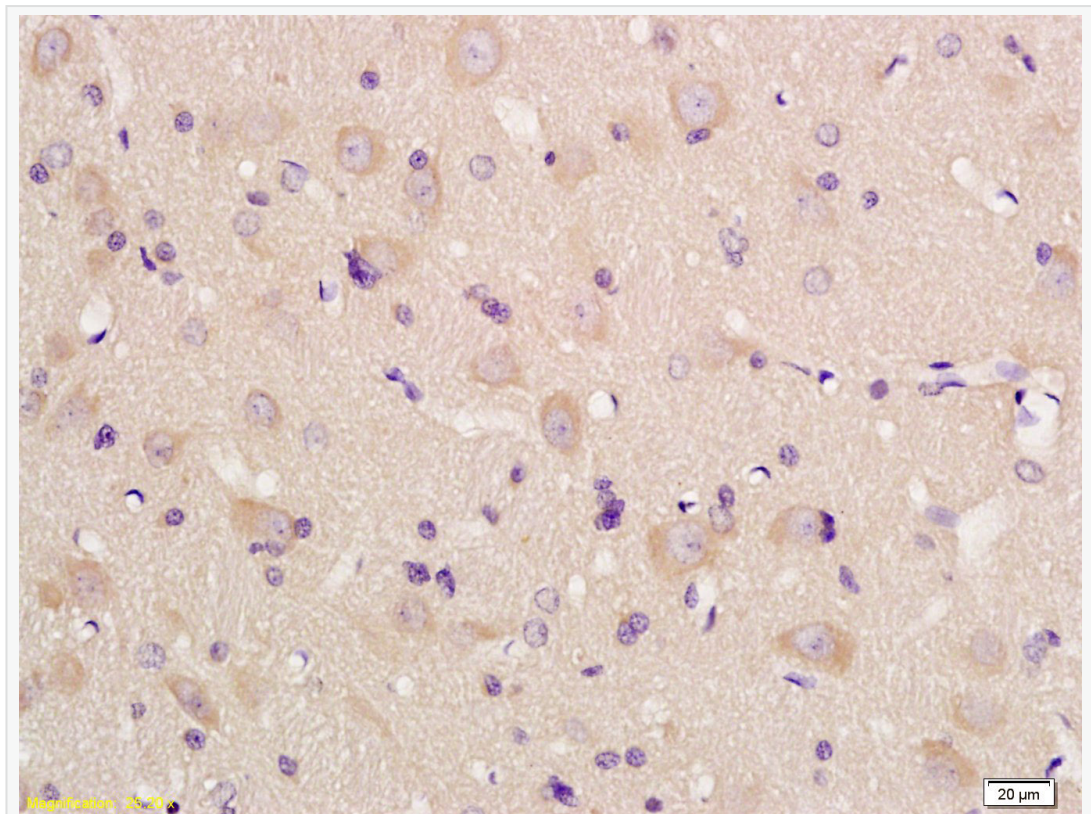
[SwissProt: Q63633](#) Rat

[Unigene: 21413](#) Human

[Unigene: 252987](#) Mouse

[Unigene: 10513](#) Rat

Product Picture



Tissue/cell: rat brain tissue; 4% Paraformaldehyde-fixed and paraffin-embedded;
Antigen retrieval: citrate buffer (1M, pH 6.0), Boiling bathing for 15min; Block
endogenous peroxidase by 3% Hydrogen peroxide for 30min; Blocking buffer
(normal goat serum,C-0005) at 37°C for 20 min;
Incubation: Anti-KCC2 Polyclonal Antibody, Unconjugated(SL10295R) 1:200,



SunLong Biotech Co.,LTD
Tel: 0086-571-56623320 Fax:0086-571-56623318
E-mail:sales@sunlongbiotech.com
www.sunlongbiotech.com

overnight at 4°C, followed by conjugation to the secondary antibody(SP-0023)
and DAB(C-0010) staining