

Rabbit Anti-TBCEL antibody

SL10292R

Product Name	TBCEL
Chinese Name	微管蛋白折叠辅助因子 E 样抗体
Alias	EL; Leucine-rich repeat-containing protein 35; LRRC35; TBCEL; TBCEL_HUMAN; Tubulin folding cofactor E-like; Tubulin-specific chaperone cofactor E-like protein.
Research Area	Cell biology Signal transduction
Immunogen Species	Rabbit
Clonality	Polyclonal
React Species	Human, Mouse, Rat, (predicted: Chicken, Dog, Pig, Cow, Horse, Sheep,) WB=1:500-2000 (Paraffin sections need antigen repair)
Applications	not yet tested in other applications. optimal dilutions/concentrations should be determined by the end user.
Theoretical molecular weight	48kDa
Cellular localization	cytoplasmic
Form	Liquid
Concentration	1mg/ml
immunogen	KLH conjugated synthetic peptide derived from human TBCEL: 1-100/424
Lsotype	IgG
Purification	affinity purified by Protein A
Buffer Solution	1M TBS(pH7.4) with 1% BSA, 3% Proclin300 and 50% Glycerol.
Storage	Shipped at 4°C. Store at -20 °C for one year. Avoid repeated freeze/thaw cycles.
Attention	This product as supplied is intended for research use only, not for use in human, therapeutic or diagnostic applications.
PubMed	PubMed
Product Detail	TBCEL is a 424 amino acid cytoplasmic protein that acts as a regulator of tubulin stability. While abundantly expressed in testis, TBCEL is also present in several tissues at a much lower level. TBCEL contains seven LRR

(leucine-rich) repeats, one LRRCT domain and one ubiquitin-like domain. The gene that encodes TBCEL consists of 66,704 bases and maps to human chromosome 11q23.3. Chromosome 11 houses over 1,400 genes and comprises nearly 4% of the human genome. Jervell and Lange-Nielsen syndrome, Jacobsen syndrome, Niemann-Pick disease, hereditary angioedema and Smith-Lemli-Opitz syndrome are associated with defects in genes that map to chromosome 11.

Function:

Acts as a regulator of tubulin stability.

Subcellular Location:

Cytoplasm > cytoskeleton.

Tissue Specificity:

Abundantly expressed in testis, but is also present in several tissues at a much lower level.

Similarity:

Contains 7 LRR (leucine-rich) repeats.

Contains 1 LRRCT domain.

Contains 1 ubiquitin-like domain.

SWISS:

Q5QJ74

Gene ID:

219899

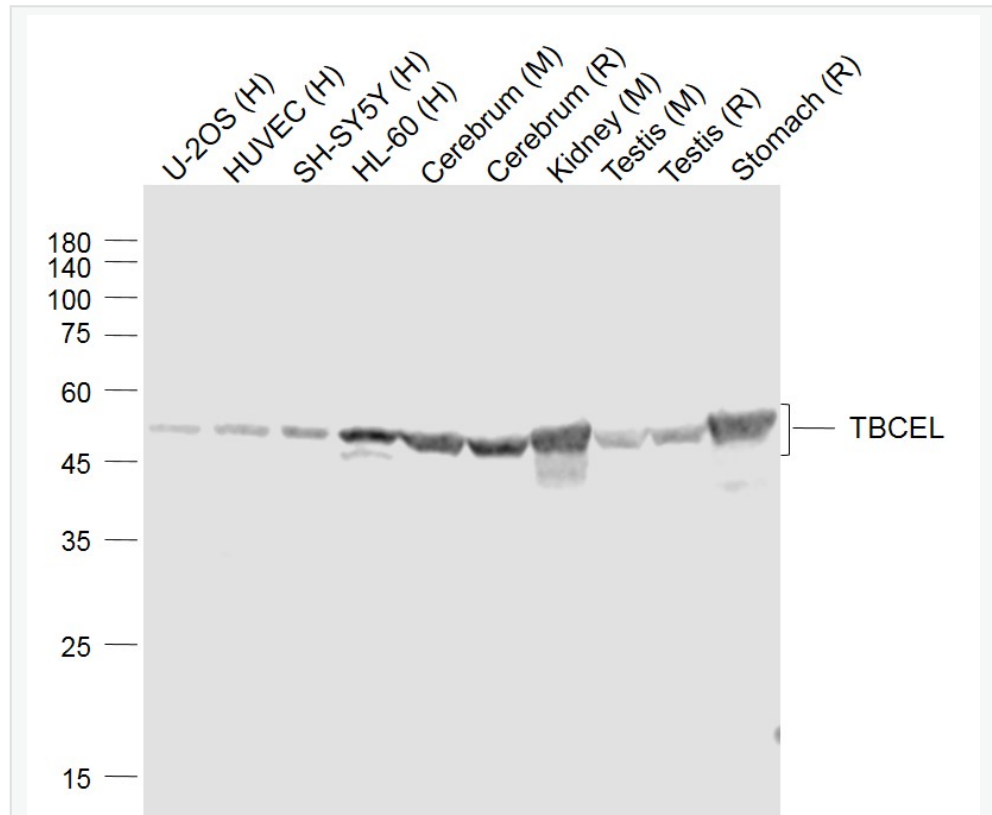
Database links:

[Entrez Gene: 219899](#) Human

[Omim: 610451](#) Human

[SwissProt: Q5QJ74](#) Human

[Unigene: 504136](#) Human



Product Picture

Sample:

Lane 1: U-2OS (Human) Cell Lysate at 30 ug

Lane 2: HUVEC (Human) Cell Lysate at 30 ug

Lane 3: SH-SY5Y (Human) Cell Lysate at 30 ug

Lane 4: HL-60 (Human) Cell Lysate at 30 ug

Lane 5: Cerebrum (Mouse) Lysate at 40 ug

Lane 6: Cerebrum (Rat) Lysate at 40 ug

Lane 7: Kidney (Mouse) Lysate at 40 ug

Lane 8: Testis (Mouse) Lysate at 40 ug

Lane 9: Testis (Rat) Lysate at 40 ug



Lane 10: Stomach (Rat) Lysate at 40 ug

Primary: Anti-TBCEL (SL10292R) at 1/1000 dilution

Secondary: IRDye800CW Goat Anti-Rabbit IgG at 1/20000 dilution

Predicted band size: 48 kD

Observed band size: 48 kD