

## Rabbit Anti-SYF2 antibody

SL10290R

**Product Name** SYF2

**Chinese Name** SYF2 蛋白抗体

**Alias** Pre-mRNA-splicing factor SYF2; CCNDBP1-interactor; p29; SYF2\_HUMAN.

**Research Area** Cell biology immunology

**Immunogen Species** Rabbit

**Clonality** Polyclonal

**React Species** Mouse, (predicted: Human, Rat, Dog, Pig, Cow, Horse, Rabbit, Sheep, )  
IHC-P=1:100-500,IHC-F=1:100-500,IF=1:100-500 (Paraffin sections need antigen repair)

**Applications** not yet tested in other applications.  
optimal dilutions/concentrations should be determined by the end user.

**Theoretical molecular weight** 29kDa

**Cellular localization** The nucleus

**Form** Liquid

**Concentration** 1mg/ml

**immunogen** KLH conjugated synthetic peptide derived from human SYF2: 131-230/243

**Lsotype** IgG

**Purification** affinity purified by Protein A

**Buffer Solution** 1M TBS(pH7.4) with 1% BSA, 3% Proclin300 and 50% Glycerol.

**Storage** Shipped at 4°C. Store at -20 °C for one year. Avoid repeated freeze/thaw cycles.

**Attention** This product as supplied is intended for research use only, not for use in human, therapeutic or diagnostic applications.

**PubMed** [PubMed](#)

**Product Detail** SYF2 is a nuclear protein that interacts with cyclin D-type binding-protein 1, which is thought to be a cell cycle regulator at the G1/S transition. Alternate transcriptional

splice variants, encoding different isoforms, have been characterized.

**Function:**

May be involved in pre-mRNA splicing (By similarity).

**Subunit:**

Identified in the spliceosome C complex. Interacts with CCNDBP1.

**Subcellular Location:**

Nucleus.

**Tissue Specificity:**

Abundantly expressed in the heart, skeletal muscle and kidney. Expressed at lower level other tissues.

**Similarity:**

Belongs to the SYF2 family.

**SWISS:**

O95926

**Gene ID:**

25949

**Database links:**

[Entrez Gene: 25949](#) Human

[Entrez Gene: 68592](#) Mouse

[Entrez Gene: 170933](#) Rat

[Omim: 607090](#) Human

[SwissProt: O95926](#) Human

[SwissProt: Q9D198](#) Mouse

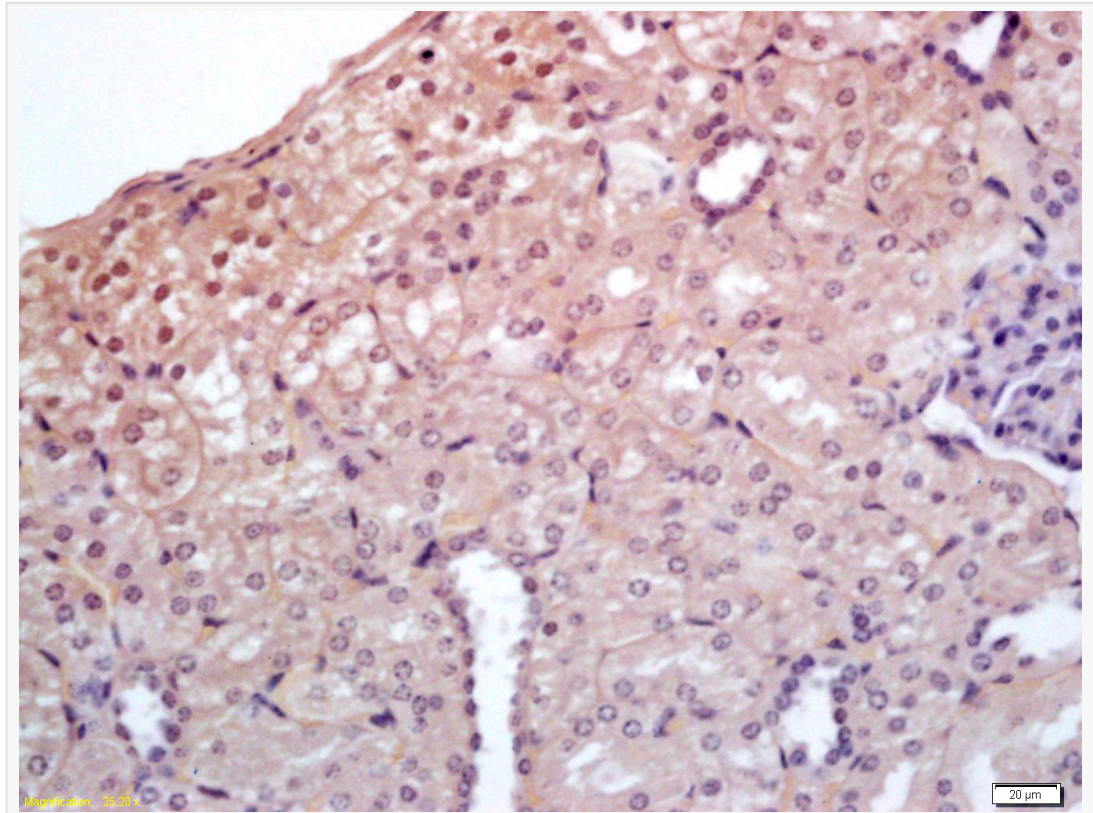
[SwissProt: Q4QRB2](#) Rat

[Unigene: 20013](#) Human

[Unigene: 29989](#) Mouse

Unigene: 162117 Rat

**Product  
Picture**



Tissue/cell: mouse kidney tissue; 4% Paraformaldehyde-fixed and paraffin-embedded;

Antigen retrieval: citrate buffer ( 1M, pH 6.0 ), Boiling bathing for 15min; Block endogenous peroxidase by 3% Hydrogen peroxide for 30min; Blocking buffer (normal goat serum,C-0005) at 37°C for 20 min;

Incubation: Anti-SYF2 Polyclonal Antibody, Unconjugated(SL10290R) 1:200, overnight at 4°C, followed by conjugation to the secondary antibody(SP-0023) and DAB(C-0010) staining



SunLong Biotech Co.,LTD  
Tel: 0086-571-56623320 Fax:0086-571-56623318  
E-mail:sales@sunlongbiotech.com  
www.sunlongbiotech.com

---