

Rabbit Anti-Cytokeratin 19 antibody

SL1028R

Product Name Cytokeratin 19

Chinese Name 细胞角蛋白 19 抗体

Alias 40 kDa keratin intermediate filament; CK 19; ck19; CK19; CK-19; KRT19; Cytokeratin 19; Cytokeratin-19; k19; k1cs; Keratin 19; Keratin-19; Keratin type I 40 kD; Keratin type i 40kD; Keratin type I cytoskeletal 19; krt19; mgc15366; K1C19_HUMAN; Keratin, type I cytoskeletal 19; Keratin, type I, 40 kd.

Research Area Tumour Cell biology Stem cells Cell type markers

Immunogen Species Rabbit

Clonality Polyclonal

React Species Human, (predicted: Rat,)

Applications WB=1:500-2000,IHC-P=1:100-500,IHC-F=1:100-500,IF=1:100-500,Flow-Cyt=1µg/test
not yet tested in other applications.
optimal dilutions/concentrations should be determined by the end user.

Theoretical molecular weight 44kDa

Cellular localization cytoplasmic

Form Liquid

Concentration 1mg/ml

immunogen KLH conjugated synthetic peptide derived from human CK19: 168-270/400 <Cytoplasmic>

Lsotype IgG

Purification affinity purified by Protein A

Buffer Solution 1M TBS(pH7.4) with 1% BSA, 3% Proclin300 and 50% Glycerol.

Storage Shipped at 4°C. Store at -20 °C for one year. Avoid repeated freeze/thaw cycles.

Attention This product as supplied is intended for research use only, not for use in human, therapeutic or diagnostic applications.

PubMed

[PubMed](#)

The protein encoded by this gene is a member of the keratin family. The keratins are intermediate filament proteins responsible for the structural integrity of epithelial cells and are subdivided into cytokeratins and hair keratins. The type I cytokeratins consist of acidic proteins which are arranged in pairs of heterotypic keratin chains. Unlike its related family members, this smallest known acidic cytokeratin is not paired with a basic cytokeratin in epithelial cells. It is specifically expressed in the periderm, the transiently superficial layer that envelopes the developing epidermis. The type I cytokeratins are clustered in a region of chromosome 17q12-q21. [provided by RefSeq, Jul 2008]

Function:

Involved in the organization of myofibers. Together with KRT8, helps to link the contractile apparatus to dystrophin at the costameres of striated muscle.

Subunit:

Heterotetramer of two type I and two type II keratins. Interacts with PNN and the actin-binding domain of DMD. Interacts with HCV core protein.

Tissue Specificity:

Expressed in a defined zone of basal keratinocytes in the deep outer root sheath of hair follicles. Also observed in sweat gland and mammary gland ductal and secretory cells, bile ducts, gastrointestinal tract, bladder urothelium, oral epithelia, esophagus, ectocervical epithelium (at protein level). Expressed in epidermal basal cells, in nipple epidermis and a defined region of the hair follicle. Also seen in a subset of vascular wall cells in both the veins and artery of human umbilical cord, and in umbilical cord vascular smooth muscle. Observed in muscle fibers accumulating in the costameres of myoplasm at the sarcolemma in structures that contain dystrophin and spectrin.

Product Detail

Similarity:

Belongs to the intermediate filament family.

SWISS:

P08727

Gene ID:

3880

Database links:

[Entrez Gene: 3880](#) Human

[Entrez Gene: 16669](#) Mouse

[Omim: 148020](#) Human

[SwissProt: P08727](#) Human

[SwissProt: P19001](#) Mouse

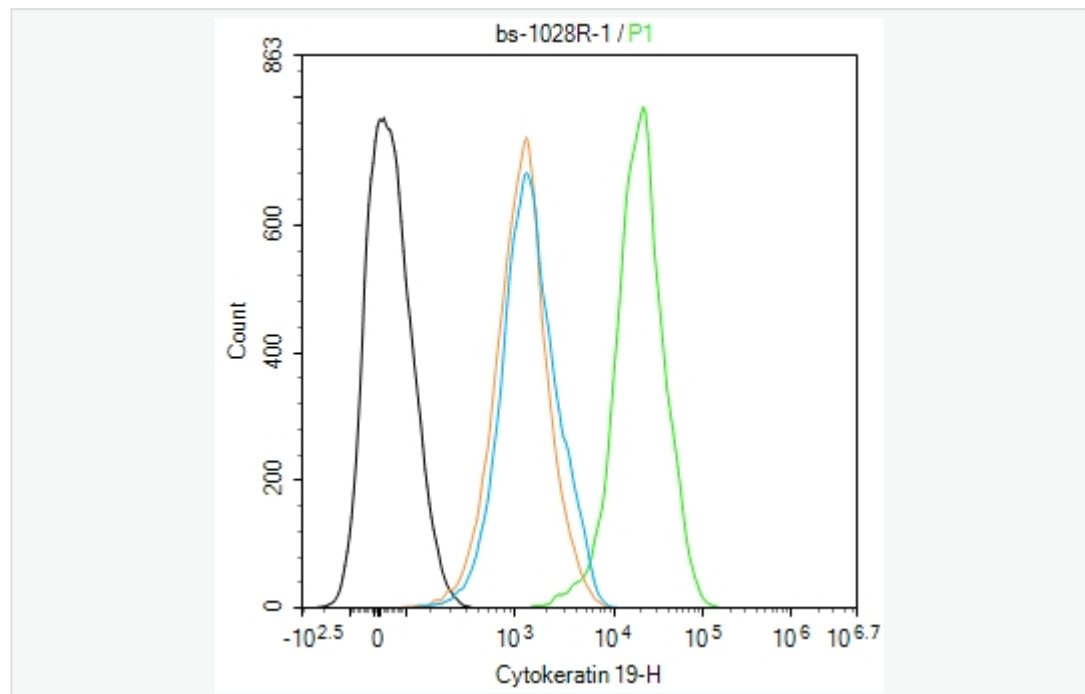
[Unigene: 654568](#) Human

[Unigene: 439699](#) Mouse

结构蛋白 (Structural Proteins)

CK-19 细胞角蛋白-19(又称 CYFRa21-1)主要用于 Tumour 方面的研究, 近年来大多用于消化系统恶性 Tumour 的鉴别, 有学者认为: CK-19 在胰腺 Stem cells 分化过程中有细胞角蛋白 19 的表达, 把细胞角蛋白 19 作为胰腺 Stem cells 的 Maker。阳性部位: 主要在胞浆。

Product
Picture



Blank control (black line) :MCF-7.

Primary Antibody (green line): Rabbit Anti-Cytokeratin 19 antibody (SL1028R)

Dilution:1ug/Test;

Secondary Antibody (white blue line) : Goat anti-rabbit IgG-AF488

Dilution: 0.5ug/Test.

Isotype control (orange line) : Normal Rabbit IgG

Protocol

The cells were fixed with 4% PFA (10min at room temperature)and then permeabilized with 90% ice-cold methanol for 20 min at -20°C, The cells were then incubated in 5%BSA to block non-specific protein-protein interactions for 30 min at room temperature .Cells stained with Primary Antibody for 30 min at room temperature. The secondary antibody used for 40 min at room temperature. Acquisition of 20,000 events was performed.