

## Rabbit Anti-GADD34 antibody

SL10287R

<b>Product Name</b>	GADD34
<b>Chinese Name</b>	生长抑制 DNA 损伤基因 34 抗体
<b>Alias</b>	Growth arrest and DNA damage-inducible 34; Apoptosis associated protein; GADD 34; Growth arrest and DNA damage inducible 34; Growth arrest and DNA-damage-inducible 34; PPP1R15A; Protein phosphatase 1 regulatory (inhibitor) subunit 15A; Protein phosphatase 1 regulatory subunit 15A; Apoptosis associated protein; GADD 34; Growth arrest and DNA damage inducible 34; Growth arrest and DNA damage-inducible protein GADD34; Myeloid differentiation primary response protein MyD116 homolog; Ppp1r15a; PR15A_HUMAN; Protein phosphatase 1 regulatory (inhibitor) subunit 15A; Protein phosphatase 1 regulatory subunit 15A.
<b>Research Area</b>	Cell biology Signal transduction Apoptosis Cyclin Kinases and Phosphatases Epigenetics
<b>Immunogen Species</b>	Rabbit
<b>Clonality</b>	Polyclonal
<b>React Species</b>	Human, (predicted: Mouse, Rat, )
<b>Applications</b>	Flow-Cyt=1 $\mu$ g/Test (Paraffin sections need antigen repair) not yet tested in other applications. optimal dilutions/concentrations should be determined by the end user.
<b>Theoretical molecular weight</b>	74kDa
<b>Cellular localization</b>	cytoplasmic
<b>Form</b>	Liquid
<b>Concentration</b>	1mg/ml
<b>immunogen</b>	KLH conjugated synthetic peptide derived from human GADD34: 401-500/674
<b>Lsotype</b>	IgG
<b>Purification</b>	affinity purified by Protein A
<b>Buffer Solution</b>	1M TBS(pH7.4) with 1% BSA, 3% Proclin300 and 50% Glycerol.
<b>Storage</b>	Shipped at 4°C. Store at -20 °C for one year. Avoid repeated freeze/thaw

**Attention**

cycles.

This product as supplied is intended for research use only, not for use in human, therapeutic or diagnostic applications.

**PubMed**

[PubMed](#)

This gene is a member of a group of genes whose transcript levels are increased following stressful growth arrest conditions and treatment with DNA-damaging agents. The induction of this gene by ionizing radiation occurs in certain cell lines regardless of p53 status, and its protein response is correlated with apoptosis following ionizing radiation. [provided by RefSeq, Jul 2008]

**Function:**

Recruits the serine/threonine-protein phosphatase PP1 to dephosphorylate the translation initiation factor eIF-2A/EIF2S1, thereby reversing the shut-off of protein synthesis initiated by stress-inducible kinases and facilitating recovery of cells from stress.

**Subunit:**

Interacts with PCNA. Interacts with LYN and MLL. Interacts with PP1, PPP1R1A and SMARCB1. Interacts with SMAD7. Interacts with BAG1.

**Subcellular Location:**

Endoplasmic reticulum.

**Product Detail**

**Post-translational modifications:**

Phosphorylated on tyrosine by LYN; which impairs its antiproliferative activity.

**Similarity:**

Belongs to the PPP1R15 family.

**SWISS:**

O75807

**Gene ID:**

23645

**Database links:**

[Entrez Gene: 514688](#) Cow

[Entrez Gene: 23645](#) Human

[Entrez Gene: 17872](#) Mouse

[Entrez Gene: 171071](#) Rat

[Omin: 611048](#) Human

[SwissProt: Q2K151](#) Cow

[SwissProt: O75807](#) Human

[SwissProt: P17564](#) Mouse

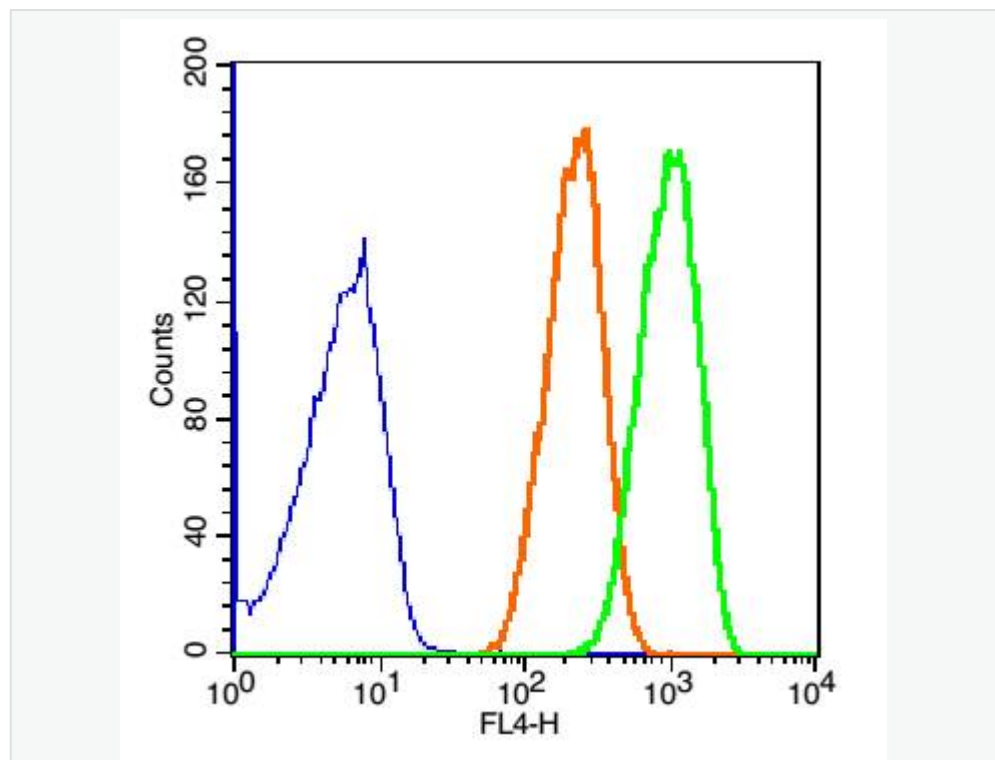
[SwissProt: Q6IN02](#) Rat

[Unigene: 631593](#) Human

[Unigene: 4048](#) Mouse

[Unigene: 2232](#) Rat

## Product Picture



Blank control(blue): 293T Cells(fixed with 2% paraformaldehyde (10 min) and then permeabilized with ice-cold 90% methanol for 30 min on ice).



Primary Antibody: Rabbit Anti-GADD34/AF647 Conjugated antibody

(SL10287R-AF647), Dilution: 1 $\mu$ g in 100  $\mu$ L 1X PBS containing 0.5%

BSA;

Isotype Control Antibody: Rabbit IgG/FITC(orange) ,used under the same

conditions.