

Rabbit Anti-Nanos3 antibody

SL10227R

Product Name	Nanos3
Chinese Name	骨巢蛋白抗体
Alias	NANOS3; NANOS 3; NANOS-3; NOS3; NOS-3; Nanos homolog 3; NANO3_HUMAN.
Research Area	Cell biology immunology Neurobiology Cell adhesion molecule Cytoskeleton
Immunogen Species	Rabbit
Clonality	Polyclonal
React Species	Mouse, (predicted: Human, Rat, Pig, Cow, Sheep,) WB=1:500-2000 (Paraffin sections need antigen repair)
Applications	not yet tested in other applications. optimal dilutions/concentrations should be determined by the end user.
Theoretical molecular weight	19kDa
Cellular localization	The cell membrane Extracellular matrix Secretory protein
Form	Liquid
Concentration	1mg/ml
immunogen	KLH conjugated synthetic peptide derived from human Nanos3: 101-173/173
Lsotype	IgG
Purification	affinity purified by Protein A
Buffer Solution	1M TBS(pH7.4) with 1% BSA, 3% Proclin300 and 50% Glycerol.
Storage	Shipped at 4°C. Store at -20 °C for one year. Avoid repeated freeze/thaw cycles.
Attention	This product as supplied is intended for research use only, not for use in human, therapeutic or diagnostic applications.
PubMed	PubMed
Product Detail	Nidogens are highly conserved proteins present in vertebrate and invertebrate basement membranes. Nidogens connect the Laminin and Collagen IV networks and integrate other proteins into the membrane. In mammals, two Nidogen proteins, Nidogen and Nidogen-2, interact at comparable levels with

Collagen I, IV and Perlecan, serving to stabilize basement membranes and playing a major role in embryogenesis. The two isoforms have a similar shape, consisting of three globular domains, and co-localize in vessel walls and other basement membrane zones. Nidogen-2 is a cell adhesion protein glycosylated at nitrogen and oxygen sites, and is widely distributed in basement membranes in heart, placenta, bone and, to a lesser extent, in pancreas, kidney and skeletal muscle.

Function:

Cell adhesion glycoprotein which is widely distributed in basement membranes. Binds to collagens I and IV, to perlecan and to laminin 1. Does not bind fibulins. It probably has a role in cell-extracellular matrix interactions.

Subunit:

Interacts with LAMA2. Interacts with COL13A1.

Subcellular Location:

Secreted, extracellular space, extracellular matrix, basement membrane.

Tissue Specificity:

Heart, placenta and bone. Less in pancreas, kidney and skeletal muscle.

Similarity:

Contains 5 EGF-like domains.
Contains 5 LDL-receptor class B repeats.
Contains 1 NIDO domain.
Contains 1 nidogen G2 beta-barrel domain.
Contains 2 thyroglobulin type-1 domains.

SWISS:

P60323

Gene ID:

342977

Database links:

[Entrez Gene: 342977](#) Human

[Entrez Gene: 244551](#) Mouse

[Entrez Gene: 288909](#) Rat

[Omim: 608229](#) Human

[SwissProt: P60323](#) Human

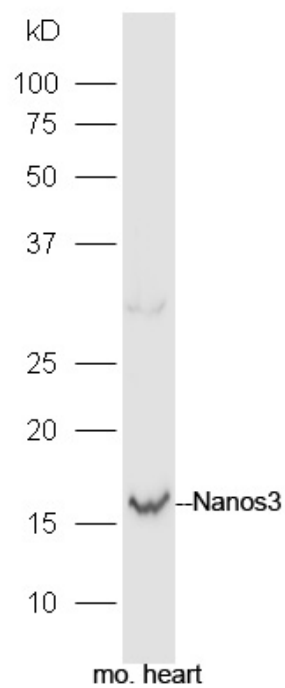
[SwissProt: Q495E5](#) Human

[SwissProt: P60324](#) Mouse

[Unigene: 127982](#) Human

[Unigene: 216740](#) Mouse

Product Picture



Protein: heart(mouse) lysate at 40ug;

Primary: rabbit Anti-Nanos3 (SL10227R) at 1:300;

Secondary: HRP conjugated Goat-Anti-rabbit IgG(SL0295G-HRP) at 1:
5000;

Predicted band size: 19 kD



SunLong Biotech Co.,LTD
Tel: 0086-571-56623320 Fax:0086-571-56623318
E-mail:sales@sunlongbiotech.com
www.sunlongbiotech.com

Observed band size: 17 kD