

## Rabbit Anti-phospho-CK II beta (Ser209)antibody

SL10225R

**Product Name** phospho-CK II beta (Ser209)

**Chinese Name** 磷酸化丝氨酸/苏氨酸蛋白激酶 II  $\beta$ /casein kinase II $\beta$  抗体

**Alias** Casein Kinase 2 beta (phospho S209); p-Casein Kinase 2 beta (phospho S209); Casein Kinase 2 beta (p-S209); p-CSK2B(Ser209); phospho-CSK2B(Ser209); Casein kinase 2 beta polypeptide; casein kinase II $\beta$ ; Casein kinase II subunit beta; CK II beta; CK2B; CK2N; CSK2B; CSK2B\_HUMAN; CSNK 2B; CSNK2B; G5A; MGC138222; MGC138224; Phosvitin; Protein G5a.

**Product Type** Phosphorylated anti

**Research Area** Tumour Cell biology Signal transduction Cyclin transcriptional regulatory factor Kinases and Phosphatases

**Immunogen Species** Rabbit

**Clonality** Polyclonal

**React Species** Human, (predicted: Mouse, Rat, Pig, Cow, )

**Applications** IHC-P=1:100-500,IHC-F=1:100-500,IF=1:100-500 (Paraffin sections need antigen repair)  
not yet tested in other applications.  
optimal dilutions/concentrations should be determined by the end user.

**Theoretical molecular weight** 24kDa

**Cellular localization** The nucleus

**Form** Liquid

**Concentration** 1mg/ml

**immunogen** KLH conjugated synthesised phosphopeptide derived from human CK II beta around the phosphorylation site of Ser209: FK(p-S)PV

**Lsotype** IgG

**Purification** affinity purified by Protein A

**Buffer** 1M TBS(pH7.4) with 1% BSA, 3% Proclin300 and 50% Glycerol.



---

**Solution**

**Storage**

Shipped at 4°C. Store at -20 °C for one year. Avoid repeated freeze/thaw cycles.

**Attention**

This product as supplied is intended for research use only, not for use in human, therapeutic or diagnostic applications.

**PubMed**

[PubMed](#)

This gene encodes the beta subunit of casein kinase II, a ubiquitous protein kinase which regulates metabolic pathways, signal transduction, transcription, translation, and replication. The enzyme is composed of three subunits, alpha, alpha prime and beta, which form a tetrameric holoenzyme. The alpha and alpha prime subunits are catalytic, while the beta subunit serves regulatory functions. The enzyme localizes to the endoplasmic reticulum and the Golgi apparatus. [provided by RefSeq, Jul 2008].

**Function:**

Participates in Wnt signaling. Plays a complex role in regulating the basal catalytic activity of the alpha subunit.

**Subunit:**

Tetramer composed of an alpha subunit, an alpha' subunit and two beta subunits. The beta subunit dimerization is mediated by zinc ions. Interacts with TCTEX1D3. Interacts with CD163. Also component of a CK2-SPT16-SSRP1 complex composed of SSRP1, SUPT16H, CSNK2A1, CSNK2A2 and CSNK2B, the complex associating following UV irradiation. Interacts with MUSK; mediates phosphorylation of MUSK by CK2.

**Product  
Detail**

**Post-translational modifications:**

Phosphorylated by alpha subunit.

**Similarity:**

Belongs to the casein kinase 2 subunit beta family.

**SWISS:**

P67871

**Gene ID:**

1460

**Database links:**

[Entrez Gene: 1460](#) Human

[Entrez Gene: 13001](#) Mouse

[Entrez Gene: 81650](#) Rat

[Omim: 115441](#) Human

[SwissProt: P67870](#) Human

[SwissProt: P67871](#) Mouse

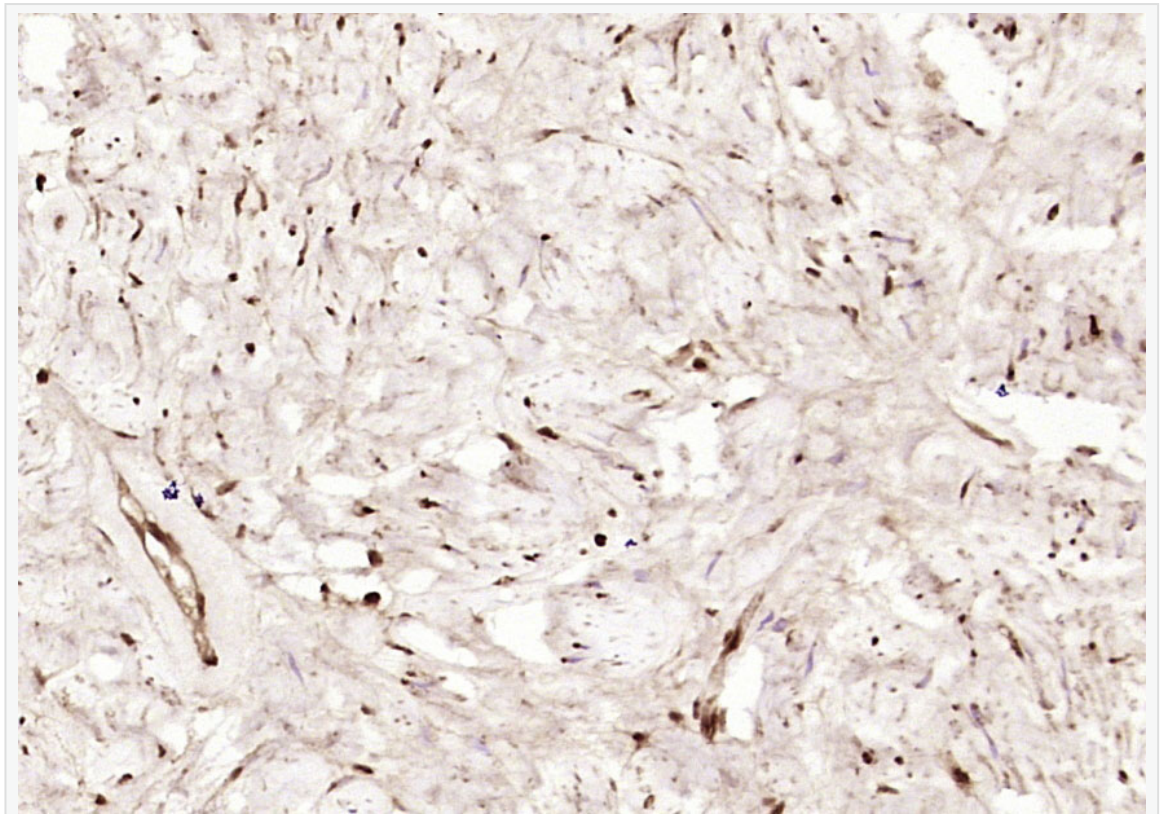
[SwissProt: P67874](#) Rat

[Unigene: 73527](#) Human

[Unigene: 378901](#) Mouse

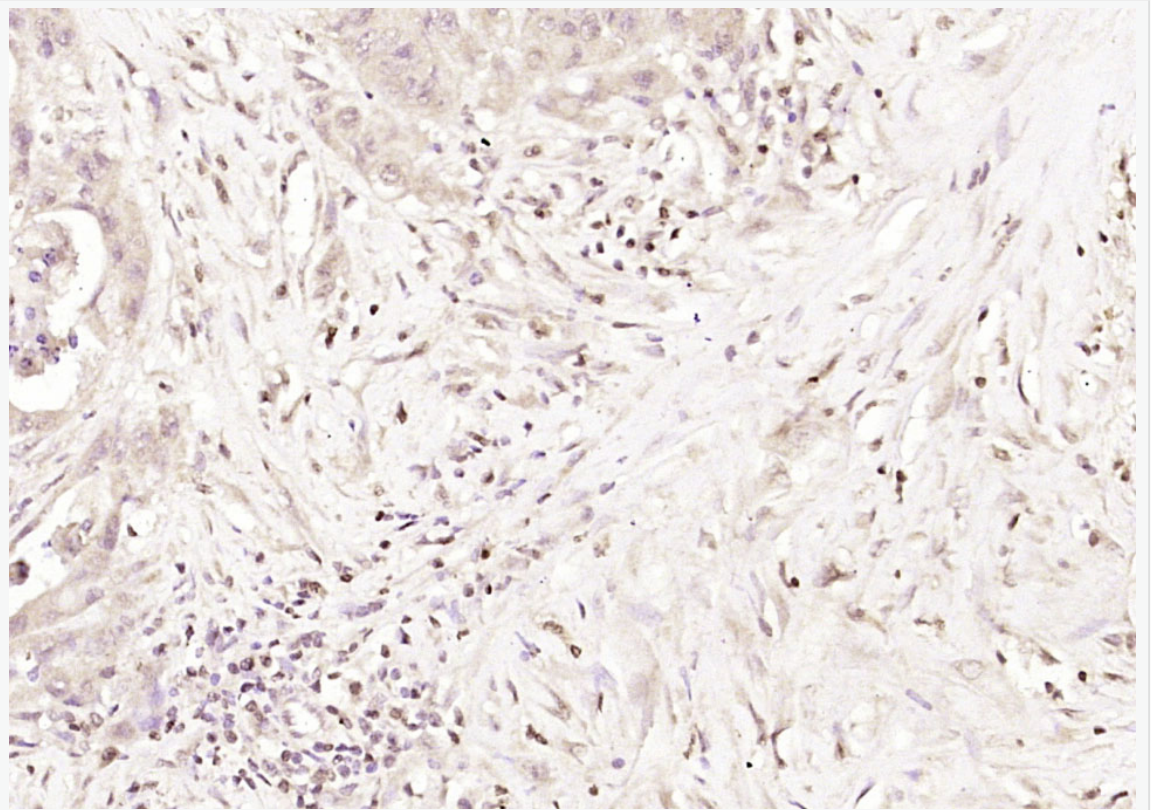
[Unigene: 137692](#) Rat

**Product  
Picture**



Paraformaldehyde-fixed, paraffin embedded (Human ovarian cancer); Antigen retrieval by boiling in sodium citrate buffer (pH6.0) for 15min; Block endogenous peroxidase by 3% hydrogen peroxide for 20 minutes; Blocking buffer (normal goat serum) at 37°C for 30min; Antibody incubation with (CK II beta (Ser209)) Polyclonal Antibody, Unconjugated (SL10225R) at 1:400 overnight at 4°C, followed by operating according

to SP Kit(Rabbit) (sp-0023) instructions and DAB staining.



Paraformaldehyde-fixed, paraffin embedded (human colon carcinoma); Antigen retrieval by boiling in sodium citrate buffer (pH6.0) for 15min; Block endogenous peroxidase by 3% hydrogen peroxide for 20 minutes; Blocking buffer (normal goat serum) at 37°C for 30min; Antibody incubation with (CK II beta (Ser209)) Polyclonal Antibody, Unconjugated (SL10225R) at 1:400 overnight at 4°C, followed by operating according to SP Kit(Rabbit) (sp-0023) instructions and DAB staining.