

Rabbit Anti-TLR2 antibody

SL1019R

Product Name TLR2

Chinese Name Toll 样受体 2 (CD282) 抗体

Alias Toll-like receptor 2; Toll like receptor 2; Toll like receptor 2 precursor; Toll-like receptor 2; TLR 2; TLR-2; Toll/interleukin-1 receptor-like protein 4; CD282 antigen; CD282; TIL 4; TIL4; TLR2_HUMAN; Toll/interleukin 1 receptor like 4; Toll/interleukin 1 receptor like protein 4; Toll/interleukin receptor like protein 4.

Research Area Tumour Cardiovascular immunology Signal transduction

Immunogen Species Rabbit

Clonality Polyclonal

React Species Human,Mouse

Applications WB=1:500-2000,Flow-Cyt=1µg/Test (Paraffin sections need antigen repair)
not yet tested in other applications.
optimal dilutions/concentrations should be determined by the end user.

Theoretical molecular weight 84kDa

Detection molecular weight 89 kDa

Cellular localization The cell membrane

Form Liquid

Concentration 1mg/ml

immunogen KLH conjugated synthetic peptide derived from human TLR2: 701-784/784
<Cytoplasmic>

Lsotype IgG

Purification affinity purified by Protein A

Buffer Solution Human,Mouse1M TBS(pH7.4) with 1% BSA, Human,Mouse3% Proclin300 and 50% Glycerol.



Storage	Shipped at 4°C. Store at -20 °C for one year. Avoid repeated freeze/thaw cycles.
Attention	This product as supplied is intended for research use only, not for use in human, therapeutic or diagnostic applications.
PubMed	PubMed The protein encoded by this gene is a member of the Toll-like receptor (TLR) family which plays a fundamental role in pathogen recognition and activation of innate immunity. TLRs are highly conserved from <i>Drosophila</i> to humans and share structural and functional similarities. They recognize pathogen-associated molecular patterns (PAMPs) that are expressed on infectious agents, and mediate the production of cytokines necessary for the development of effective immunity. The various TLRs exhibit different patterns of expression. This gene is expressed most abundantly in peripheral blood leukocytes, and mediates host response to Gram-positive bacteria and yeast via stimulation of NF-kappaB. [provided by RefSeq, Jul 2008]
Product Detail	<p>Function: Cooperates with LY96 to mediate the innate immune response to bacterial lipoproteins and other microbial cell wall components. Cooperates with TLR1 to mediate the innate immune response to bacterial lipoproteins or lipopeptides. Acts via MYD88 and TRAF6, leading to NF-kappa-B activation, cytokine secretion and the inflammatory response. May also promote apoptosis in response to lipoproteins. Recognizes mycoplasmal macrophage-activating lipopeptide-2kD (MALP-2), soluble tuberculosis factor (STF), phenol-soluble modulin (PSM) and <i>B.burgdorferi</i> outer surface protein A lipoprotein (OspA-L) cooperatively with TLR6.</p> <p>Subunit: Interacts with LY96, TLR1 and TLR6 (via extracellular domain). Binds MYD88 (via TIR domain). Interacts with TICAM1. Ligand binding induces the formation of a heterodimer with TLR1. Interacts with CNPY3.</p> <p>Subcellular Location: Membrane; Single-pass type I membrane protein.</p> <p>Tissue Specificity: Highly expressed in peripheral blood leukocytes, in particular in monocytes, in bone marrow, lymph node and in spleen. Also detected in lung and in fetal liver. Levels are low in other tissues.</p> <p>Post-translational modifications: Glycosylation of Asn-442 is critical for secretion of the N-terminal ectodomain of TLR2.</p> <p>Similarity: Belongs to the Toll-like receptor family.</p>

Contains 14 LRR (leucine-rich) repeats.

Contains 1 TIR domain.

SWISS:

O60603

Gene ID:

7097

Database links:

[Entrez Gene: 7097](#) Human

[Entrez Gene: 24088](#) Mouse

[Entrez Gene: 310553](#) Rat

[Omim: 603028](#) Human

[SwissProt: O60603](#) Human

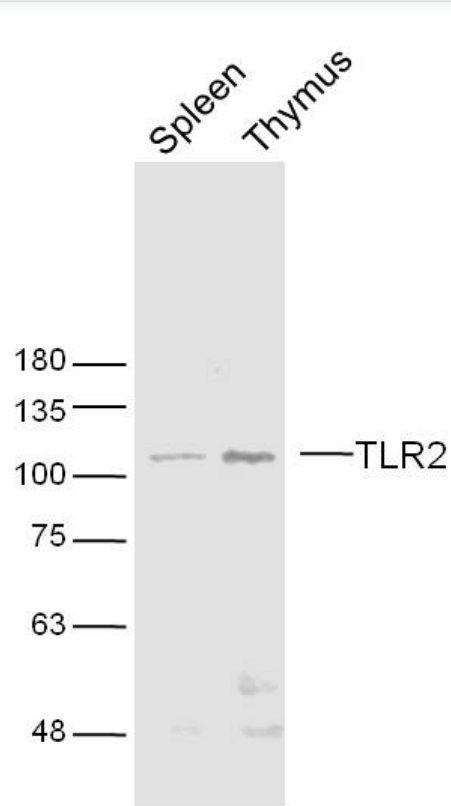
[SwissProt: Q9QUN7](#) Mouse

[Unigene: 519033](#) Human

[Unigene: 87596](#) Mouse

Toll 样受体 2 (TLR2) 通过激活天然免疫, 参与特异性免疫应答的启动, Toll 样受体 2(TLR2)作为一种重要跨膜 Signal transduction 受体参与了内毒素诱发炎症反应的病理过程, 对其调控机制的研究日益受到关注。

**Product
Picture**



Sample:

Spleen(Mouse) Lysate at 40 ug

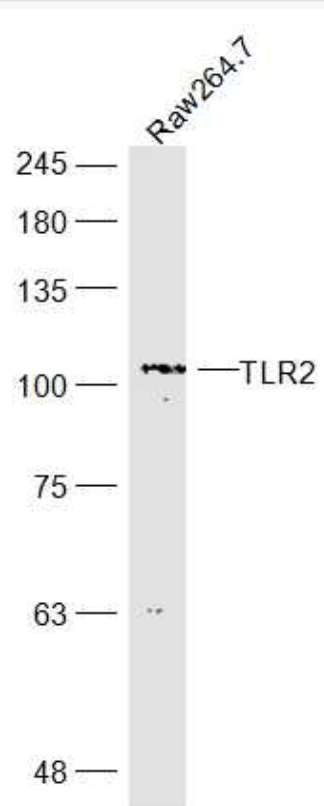
Thymus (Mouse)Lysate at 20 ug

Primary: Anti-TLR2 (SL1019R) at 1/300 dilution

Secondary: IRDye800CW Goat Anti-Rabbit IgG at 1/20000 dilution

Predicted band size: 84 kD

Observed band size: 110 kD



Sample:

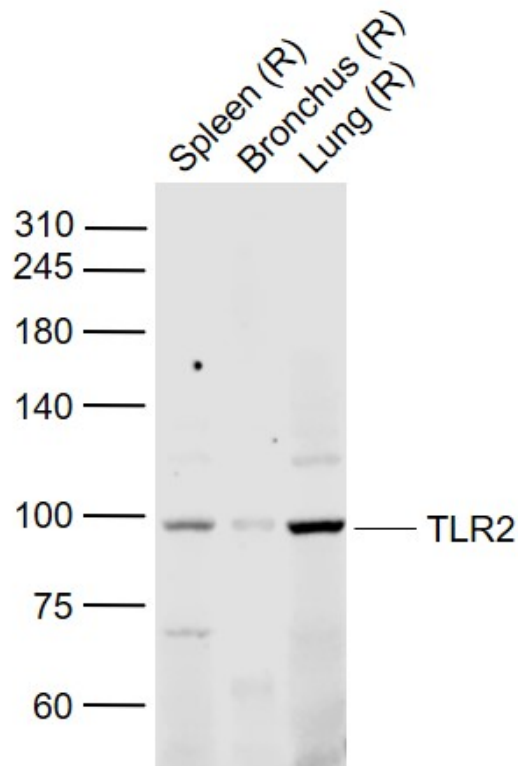
Raw264.7 (Mouse) Lysate at 30 ug

Primary: Anti-TLR2 (SL1019R) at 1/300 dilution

Secondary: IRDye800CW Goat Anti-Rabbit IgG at 1/20000 dilution

Predicted band size: 84 kD

Observed band size: 104kD



Sample:

Lane 1: Spleen (Rat) Lysate at 40 ug

Lane 2: Bronchus (Rat) Lysate at 40 ug

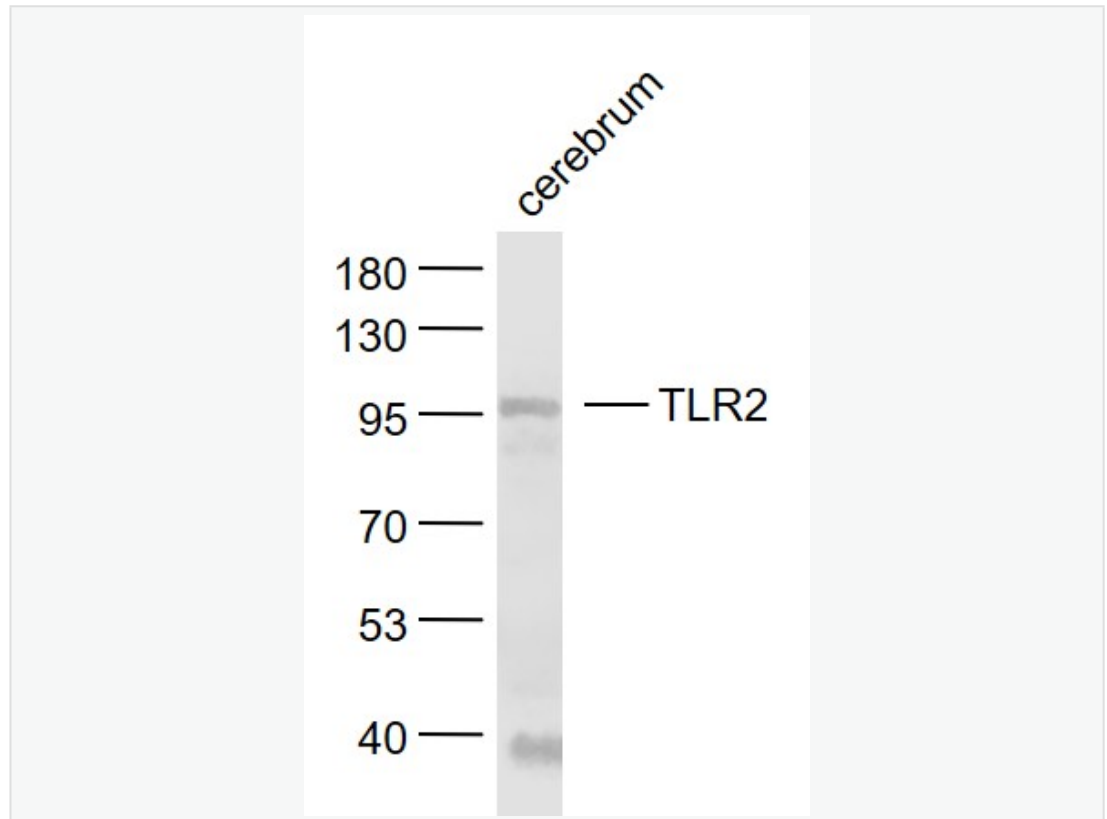
Lane 3: Lung (Rat) Lysate at 40 ug

Primary: Anti-TLR2 (SL1019R) at 1/1000 dilution

Secondary: IRDye800CW Goat Anti-Rabbit IgG at 1/20000 dilution

Predicted band size: 100 kD

Observed band size: 98 kD



Sample:

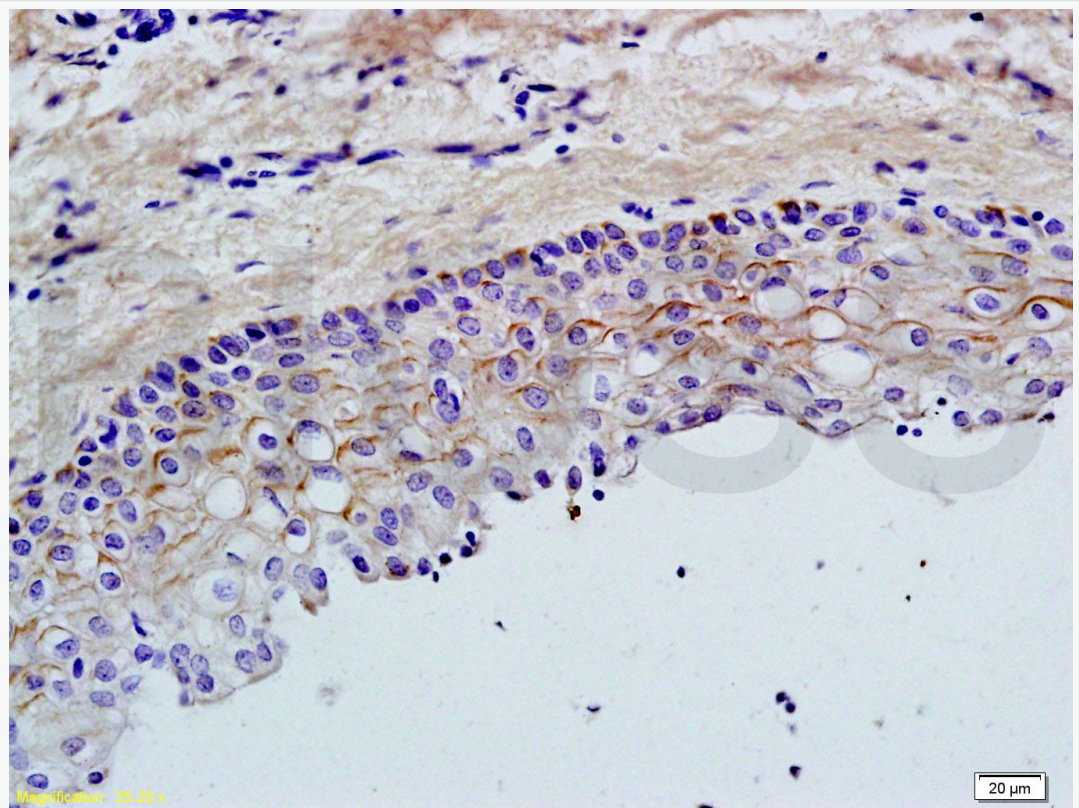
Cerebrum (Rat) Lysate at 40 ug

Primary: Anti-TLR2 (SL1019R) at 1/1000 dilution

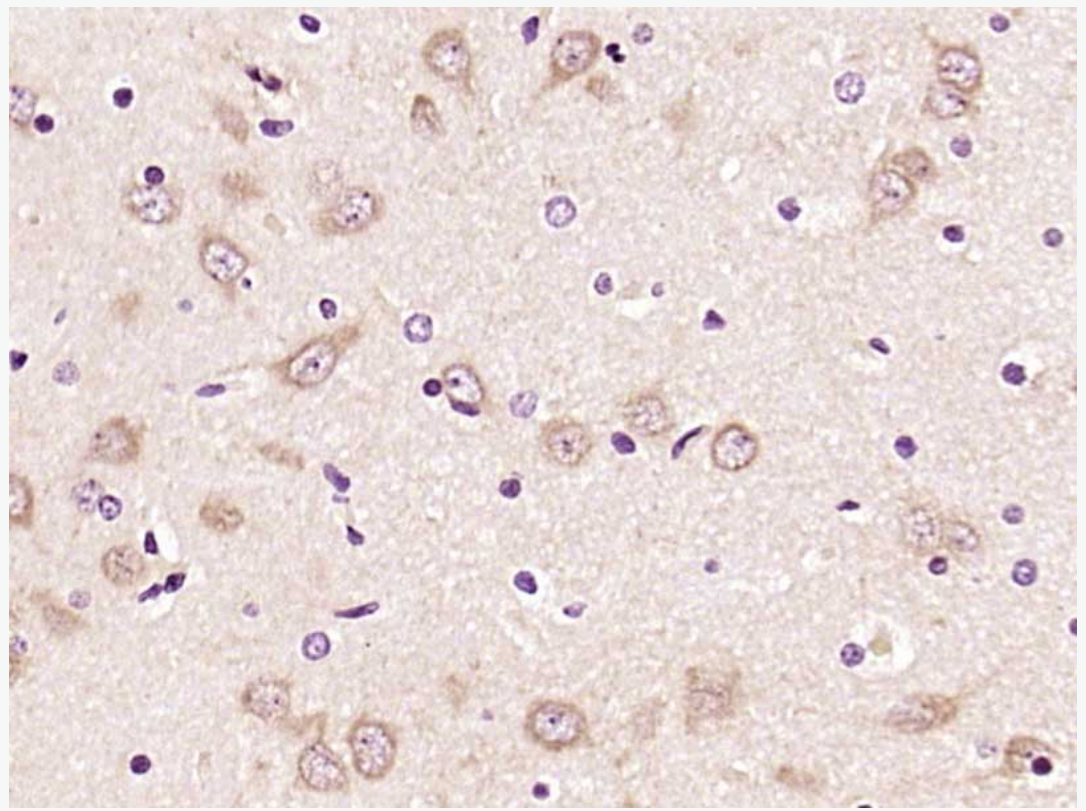
Secondary: IRDye800CW Goat Anti-Rabbit IgG at 1/20000 dilution

Predicted band size: 84 kD

Observed band size: 95 kD



Tissue/cell: rat ovary tissue; 4% Paraformaldehyde-fixed and paraffin-embedded;
Antigen retrieval: citrate buffer (Human,Mouse 1M, pH 6.0), Boiling bathing for 15min; Block endogenous peroxidase by 3% Hydrogen peroxide for 30min;
Blocking buffer (normal goat serum,C-0005) at 37°C for 20 min;
Incubation: Anti-TLR2 Polyclonal Antibody, Unconjugated(SL1019R) 1:200, overnight at 4°C, followed by conjugation to the secondary antibody(SP-0023) and DAB(C-0010) staining



Paraformaldehyde-fixed, paraffin embedded (Rat brain); Antigen retrieval by boiling in sodium citrate buffer (pH6.0) for 15min; Block endogenous peroxidase by 3% hydrogen peroxide for 20 minutes; Blocking buffer (normal goat serum) at 37°C for 30min; Antibody incubation with (TLR2) Polyclonal Antibody, Unconjugated (SL1019R) at 1:400 overnight at 4°C, followed by operating according to SP Kit(Rabbit) (sp-0023) instructions and DAB staining.