

## Rabbit Anti-phospho-BACE1 (Ser498)antibody

SL10192R

**Product Name** phospho-BACE1 (Ser498)

**Chinese Name** 磷酸化  $\beta$  分泌酶抗体

**Alias**

BACE1 (phospho-Ser498); BACE1 (phospho-S498); p-BACE1 (Ser498); p-BACE1 (Se498); APP beta secretase; Asp 2; ASP2; Aspartyl protease 2; BACE 1; BACE; Beta secretase 1; Beta secretase; Beta site amyloid beta A4 precursor protein cleaving enzyme; Beta site amyloid precursor protein cleaving enzyme 1; Beta site amyloid precursor protein cleaving enzyme; Beta site APP cleaving enzyme 1; Beta site APP cleaving enzyme; FLJ90568; HSPC104; KIAA1149; Memapsin-2; Memapsin 2; Memapsin2; Membrane associated aspartic protease 2; Transmembrane aspartic proteinase Asp2; BACE1\_HUMAN; Beta-secretase 1; Beta-site amyloid precursor protein cleaving enzyme 1; Beta-site APP cleaving enzyme 1; Membrane-associated aspartic protease 2.

**Product Type** Phosphorylated anti

**Research Area** immunology Neurobiology Signal transduction Growth factors and hormones transcriptional regulatory factor

**Immunogen Species** Rabbit

**Clonality** Polyclonal

**React Species** Human, Mouse, Rat, (predicted: Chicken, Dog, Pig, Cow, Horse, Rabbit, )

**Applications** IHC-P=1:100-500,IHC-F=1:100-500,IF=1:100-500 (Paraffin sections need antigen repair)  
not yet tested in other applications.  
optimal dilutions/concentrations should be determined by the end user.

**Theoretical molecular weight** 51kDa

**Cellular localization** cytoplasmic

**Form** Liquid

**Concentration** 1mg/ml

**immunogen** KLH conjugated Synthesised phosphopeptide derived from human BACE1 around the

---

	phosphorylation site of Ser498: DI(p-S)LL
<b>Lsotype</b>	IgG
<b>Purification</b>	affinity purified by Protein A
<b>Buffer Solution</b>	1M TBS(pH7.4) with 1% BSA, 3% Proclin300 and 50% Glycerol.
<b>Storage</b>	Shipped at 4°C. Store at -20 °C for one year. Avoid repeated freeze/thaw cycles.
<b>Attention</b>	This product as supplied is intended for research use only, not for use in human, therapeutic or diagnostic applications.
<b>PubMed</b>	<a href="#">PubMed</a> Cerebral deposition of amyloid beta peptide is an early and critical feature of Alzheimer's disease. Amyloid beta peptide is generated by proteolytic cleavage of amyloid precursor protein(APP) by two proteases, one of which is the protein encoded by this gene. The encoded protein, a member of the peptidase A1 protein family, is a type I integral membrane glycoprotein and aspartic protease that is found mainly in the Golgi. Multiple transcript variants encoding different isoforms have been described for this gene. [provided by RefSeq].
	<b>Function:</b> Responsible for the proteolytic processing of the amyloid precursor protein (APP). Cleaves at the N-terminus of the A-beta peptide sequence, between residues 671 and 672 of APP, leads to the generation and extracellular release of beta-cleaved soluble APP, and a corresponding cell-associated C-terminal fragment which is later released by gamma-secretase.
<b>Product Detail</b>	<b>Subunit:</b> Responsible for the proteolytic processing of the amyloid precursor protein (APP). Cleaves at the N-terminus of the A-beta peptide sequence, between residues 671 and 672 of APP, leads to the generation and extracellular release of beta-cleaved soluble APP, and a corresponding cell-associated C-terminal fragment which is later released by gamma-secretase.
	<b>Subcellular Location:</b> Membrane.
	<b>Tissue Specificity:</b> Expressed at high levels in the brain and pancreas. In the brain, expression is highest in the substantia nigra, locus coruleus and medulla oblongata.
	<b>Post-translational modifications:</b> Glycosylated.
	<b>Similarity:</b>

Belongs to the peptidase A1 family.

**SWISS:**  
P56817

**Gene ID:**  
23621

**Database links:**

[Entrez Gene: 23621](#) Human

[Entrez Gene: 23821](#) Mouse

[Entrez Gene: 29392](#) Rat

[Omim: 604252](#) Human

[SwissProt: P56817](#) Human

[SwissProt: P56818](#) Mouse

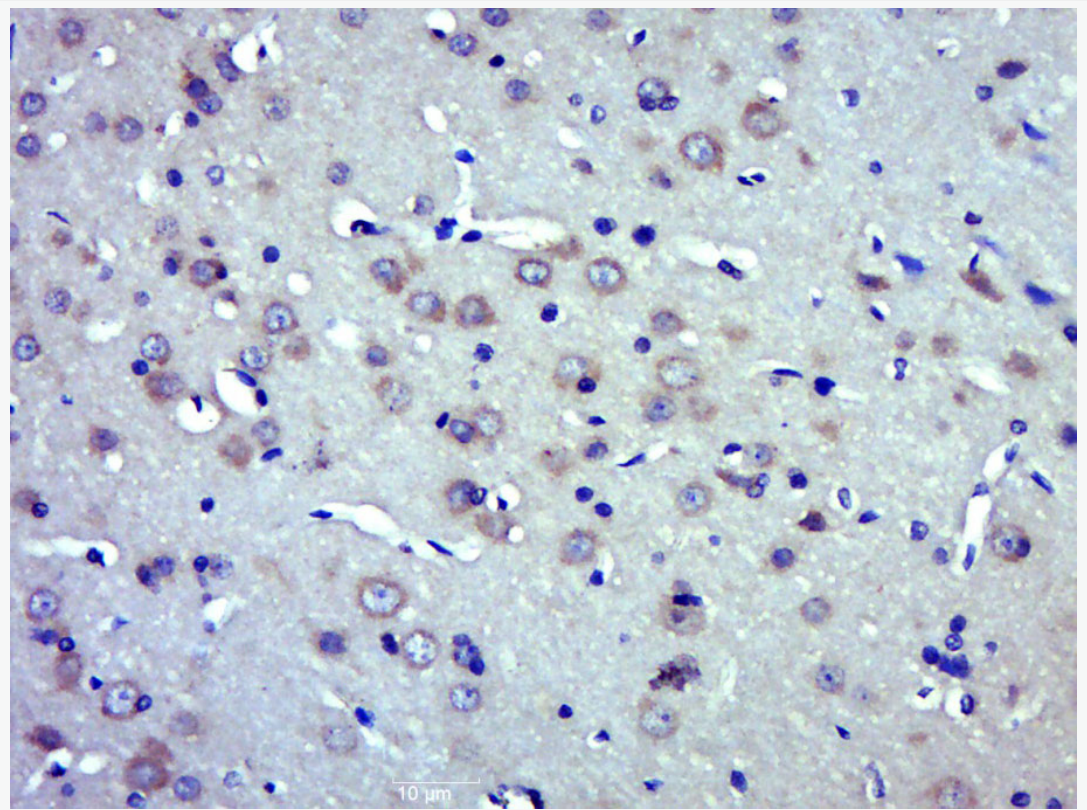
[SwissProt: P56819](#) Rat

[Unigene: 504003](#) Human

[Unigene: 24044](#) Mouse

[Unigene: 207201](#) Rat

**Product  
Picture**



Paraformaldehyde-fixed, paraffin embedded (Mouse brain); Antigen retrieval by boiling in sodium citrate buffer (pH6.0) for 15min; Block endogenous peroxidase by 3% hydrogen peroxide for 20 minutes; Blocking buffer (normal goat serum) at 37°C for 30min; Antibody incubation with (phospho-BACE1 (Ser498)) Polyclonal Antibody, Unconjugated (SL10192R) at 1:500 overnight at 4°C, followed by a conjugated secondary (sp-0023) for 20 minutes and DAB staining.