

Rabbit Anti-Endothelial lipase antibody

SL10188R

Product Name	Endothelial lipase
Chinese Name	内皮脂肪酶抗体
Alias	LIPG; EC 3.1.1.3; EDL; EL; Endothelial cell-derived lipase; Endothelial lipase; Endothelial lipase precursor; Lipase endothelial; LIPE_HUMAN; LIPG; Lipoprotein lipase H; PL; PRO719.
Research Area	Tumour Cardiovascular Cell biology immunology Signal transduction The new supersedes the old
Immunogen Species	Rabbit
Clonality	Polyclonal
React Species	Human, IHC-P=1:100-500,IHC-F=1:100-500,IF=1:100-500 (Paraffin sections need antigen repair)
Applications	not yet tested in other applications. optimal dilutions/concentrations should be determined by the end user.
Theoretical molecular weight	55kDa
Detection molecular weight	68 kDa
Cellular localization	Secretory protein
Form	Liquid
Concentration	1mg/ml
immunogen	Recombined human Endothelial lipase
Lsotype	IgG
Purification	affinity purified by Protein A
Buffer Solution	1M TBS(pH7.4) with 1% BSA, 3% Proclin300 and 50% Glycerol.
Storage	Shipped at 4°C. Store at -20 °C for one year. Avoid repeated freeze/thaw cycles.

Attention

This product as supplied is intended for research use only, not for use in human, therapeutic or diagnostic applications.

PubMed

[PubMed](#)

The protein encoded by this gene has substantial phospholipase activity and may be involved in lipoprotein metabolism and vascular biology. This protein is designated a member of the TG lipase family by its sequence and characteristic lid region which provides substrate specificity for enzymes of the TG lipase family. [provided by RefSeq, Jul 2008]

Function:

Has phospholipase and triglyceride lipase activities. Hydrolyzes high density lipoproteins (HDL) more efficiently than other lipoproteins. Binds heparin.

Subunit:

Head to tail homodimer.

Subcellular Location:

Secreted.

Tissue Specificity:

High level of expression in the liver, placenta, lung, thyroid, kidney, testis and in the corpus luteum of the ovary. Expressed also in coronary artery endothelial cells, umbilical vein endothelial cells and in hepatocytes and osteosarcoma cell lines. Not detected in heart, brain and muscle.

**Product
Detail**

Similarity:

Belongs to the AB hydrolase superfamily. Lipase family.
Contains 1 PLAT domain.

SWISS:

Q9Y5X9

Gene ID:

9388

Database links:

[Entrez Gene: 9388](#) Human

[Entrez Gene: 291437](#) Rat

[Omim: 603684](#) Human

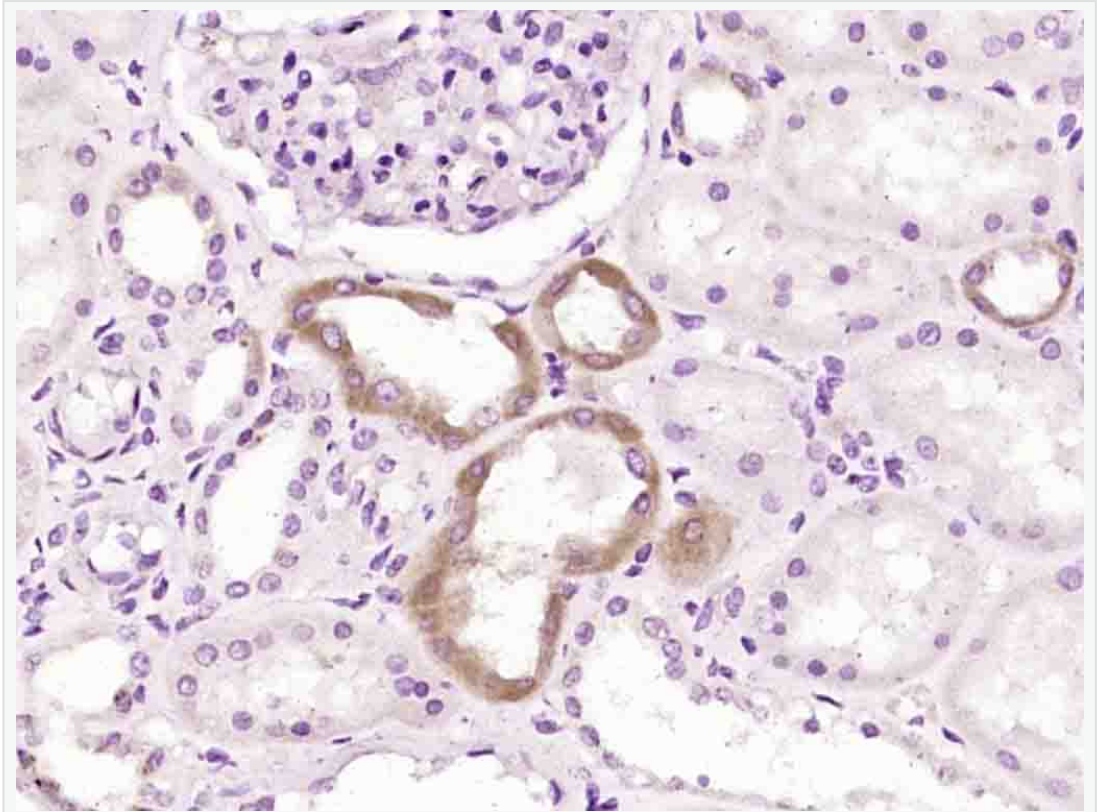
[SwissProt: Q9Y5X9](#) Human

[SwissProt: Q8VBX1](#) Rat

[Unigene: 465102](#) Human

[Unigene: 199051](#) Rat

**Product
Picture**



Paraformaldehyde-fixed, paraffin embedded (Human kidney); Antigen retrieval by boiling in sodium citrate buffer (pH6.0) for 15min; Block endogenous peroxidase by 3% hydrogen peroxide for 20 minutes; Blocking buffer (normal goat serum) at 37°C for 30min; Antibody incubation with (Endothelial lipase) Polyclonal Antibody, Unconjugated (SL10188R) at 1:200 overnight at 4°C, followed by operating according to SP Kit(Rabbit) (sp-0023) instructions and DAB staining.