

Rabbit Anti-ALDH1A1 antibody

SL10162R

Product Name ALDH1A1

Chinese Name 乙醛脱氢酶 1 型抗体

Alias cytosolic; Acetaldehyde dehydrogenase 1; AHD2; Ahd-2; AL1A1_HUMAN; ALDC; Aldehyde dehydrogenase 1 family member A1; Aldehyde dehydrogenase 1 soluble; Aldehyde dehydrogenase 1A1; Aldehyde Dehydrogenase; Aldehyde dehydrogenase cytosolic; Aldehyde dehydrogenase family 1 member A1; Aldehyde dehydrogenase liver cytosolic; ALDH 1; ALDH 1A1; ALDH class 1; ALDH-E1; ALDH1 A1; ALDH1; ALDH11; ALHDII; MGC2318; PUMB1; RALDH 1; RalDH1; Retinal dehydrogenase 1; ALDEHYDE DEHYDROGENASE A1; Aldehyde Dehydrogenase Family 1, Subfamily A1.

Research Area Tumour Cell biology immunology Neurobiology Stem cells

Immunogen Species Rabbit

Clonality Polyclonal

React Species Human,Mouse(predicted:Rat,Cow,Horse,Rabbit,Sheep,Pig)

Applications WB=1:500-2000,IHC-P=1:100-500,IHC-F=1:100-500,IF=1:100-500 (Paraffin sections need antigen repair)
not yet tested in other applications.
optimal dilutions/concentrations should be determined by the end user.

Theoretical molecular weight 54kDa

Cellular localization cytoplasmic

Form Liquid

Concentration 1mg/ml

immunogen KLH conjugated synthetic peptide derived from human ALDH1: 201-300/501

Lsotype IgG

Purification affinity purified by Protein A

Buffer Solution Human,Mouse(predicted:Rat,Cow,Horse,Rabbit,Sheep,Pig)1M TBS(pH7.4) with 1% BSA, Human,Mouse(predicted:Rat,Cow,Horse,Rabbit,Sheep,Pig)3% Proclin300 and



Storage	50% Glycerol. Shipped at 4°C. Store at -20 °C for one year. Avoid repeated freeze/thaw cycles.
Attention	This product as supplied is intended for research use only, not for use in human, therapeutic or diagnostic applications.
PubMed	PubMed This protein belongs to the aldehyde dehydrogenases family of proteins. Aldehyde dehydrogenase is the second enzyme of the major oxidative pathway of alcohol metabolism. Two major liver isoforms of this enzyme, cytosolic and mitochondrial, can be distinguished by their electrophoretic mobilities, kinetic properties, and subcellular localizations. Most Caucasians have two major isozymes, while approximately 50% of Orientals have only the cytosolic isozyme, missing the mitochondrial isozyme. A remarkably higher frequency of acute alcohol intoxication among Orientals than among Caucasians could be related to the absence of the mitochondrial isozyme. This gene encodes a cytosolic isoform, which has a high affinity for aldehydes. [provided by RefSeq]
Product Detail	Function: Binds free retinal and cellular retinol-binding protein-bound retinal. Can convert/oxidize retinaldehyde to retinoic acid.
	Subunit: Homodimer.
	Subcellular Location: Cytoplasm.
	Tissue Specificity: Expressed in the liver, lung, and testis. Apparently not expressed at detectable levels in kidney, stomach, ovary, heart, and brain.
	Similarity: Belongs to the aldehyde dehydrogenase family.
	SWISS: P00352
	Gene ID: 216
Database links: Entrez Gene: 216 Human	

[Entrez Gene: 11668](#) Mouse

[Entrez Gene: 24188](#) Rat

[Entrez Gene: 443343](#) Sheep

[Omim: 100640](#) Human

[SwissProt: P00352](#) Human

[SwissProt: P24549](#) Mouse

[SwissProt: P51647](#) Rat

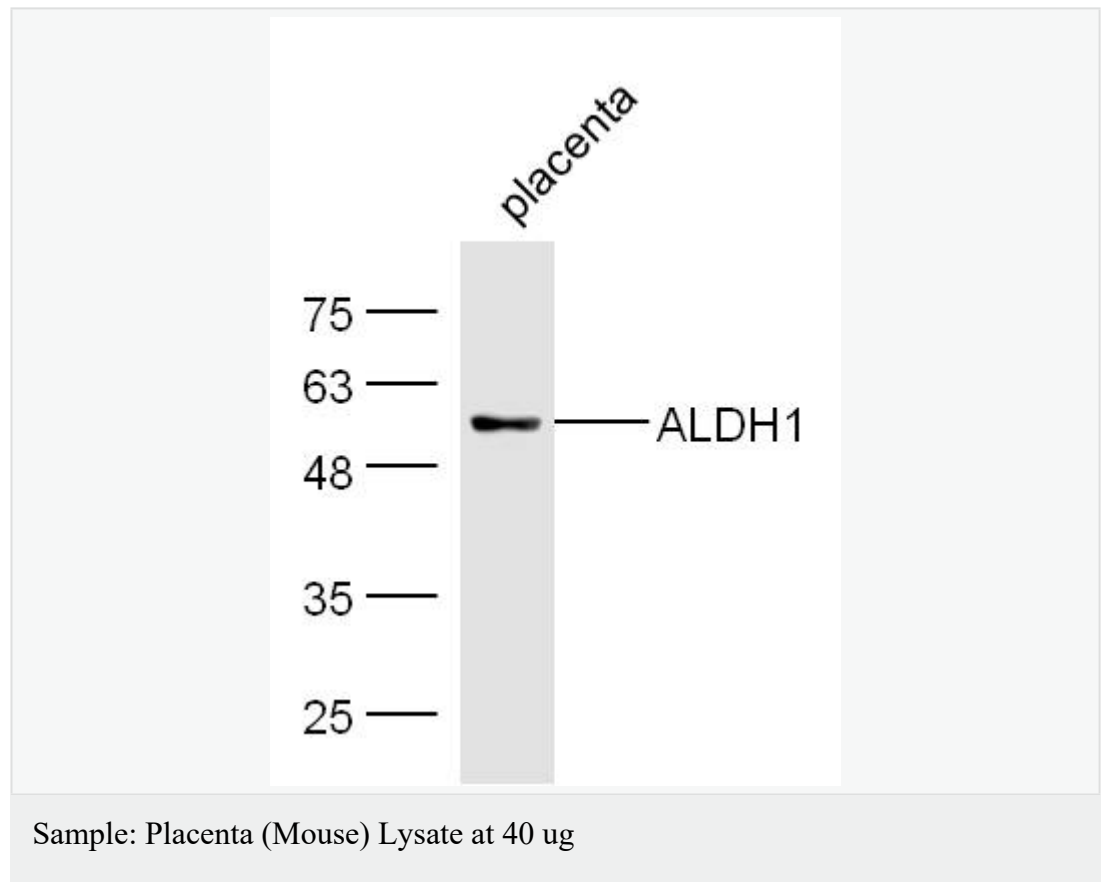
[SwissProt: P51977](#) Sheep

[Unigene: 76392](#) Human

[Unigene: 250866](#) Mouse

[Unigene: 6132](#) Rat

**Product
Picture**



Primary: Anti-ALDH1 (SL10162R) at 1/300 dilution

Secondary: IRDye800CW Goat Anti-Rabbit IgG at 1/20000 dilution

Predicted band size: 54 kD

Observed band size: 54 kD



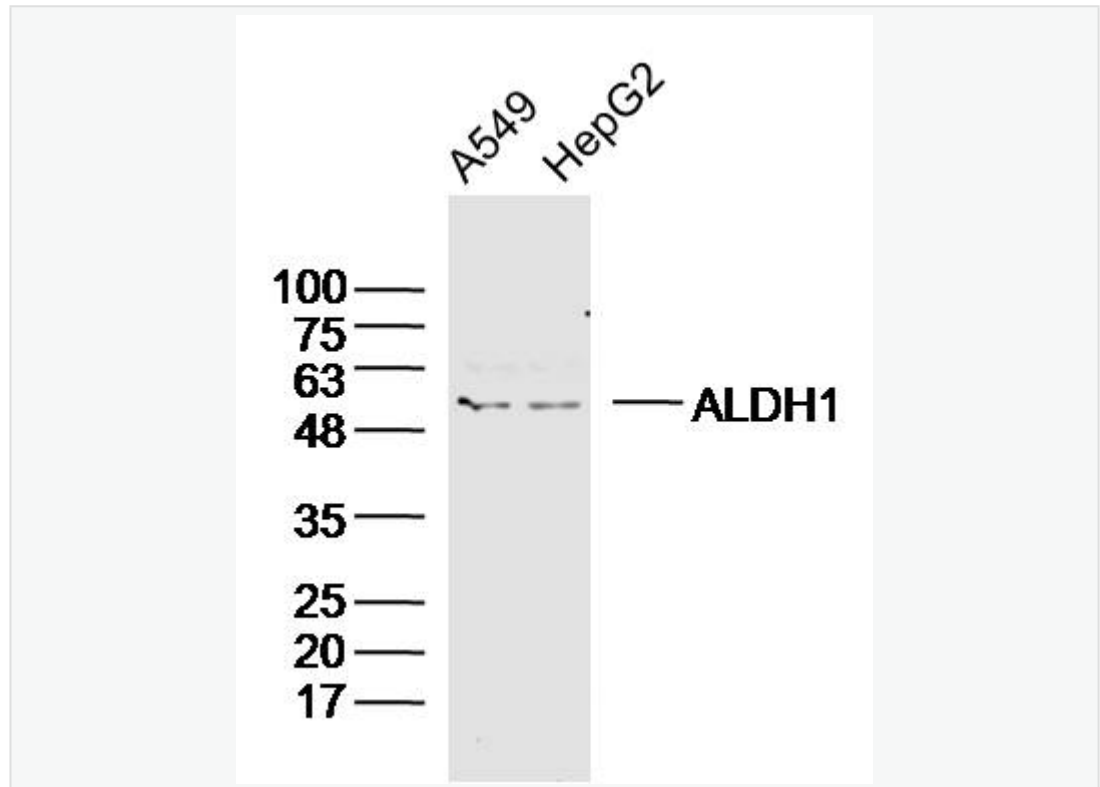
Sample: Liver (mouse) Lysate at 40 ug

Primary: Anti- ALDH1 (SL10162R) at 1/300 dilution

Secondary: IRDye800CW Goat Anti-Rabbit IgG at 1/20000 dilution

Predicted band size: 54 kD

Observed band size: 54 kD



Sample:

A549 Cell (Human) Lysate at 40 ug

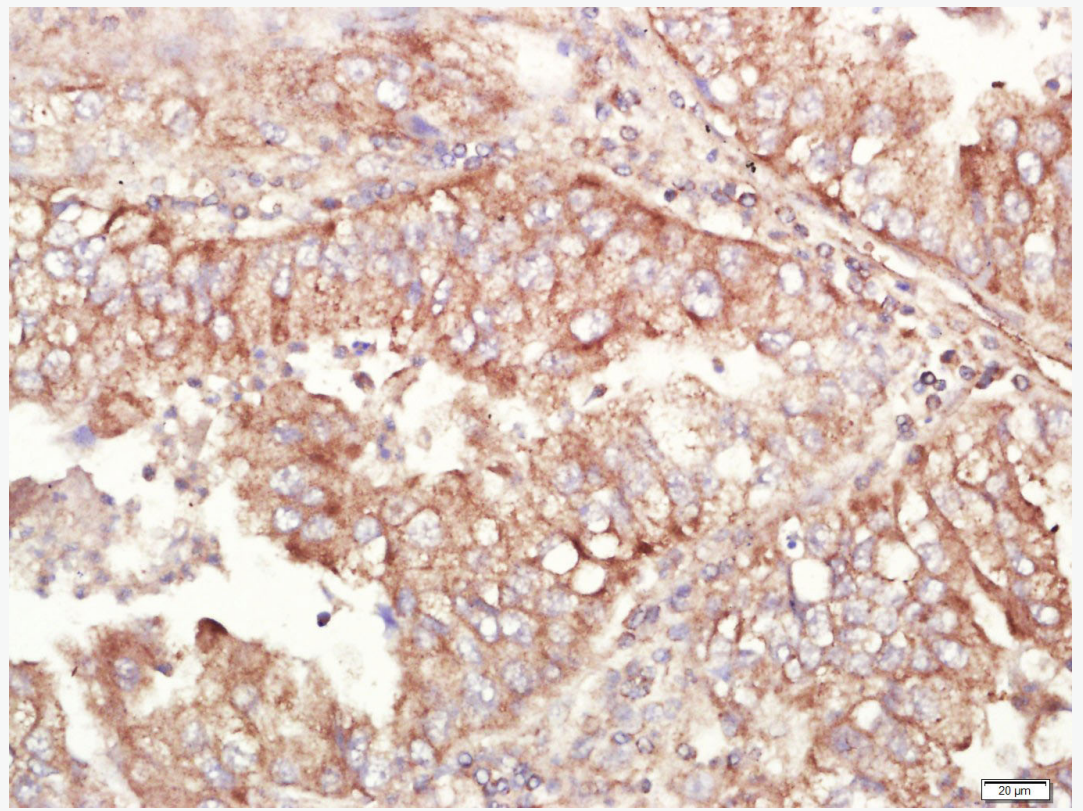
HepG2 Cell (Human) Lysate at 40 ug

Primary: Anti-ALDH1(SL10162R)at 1/300 dilution

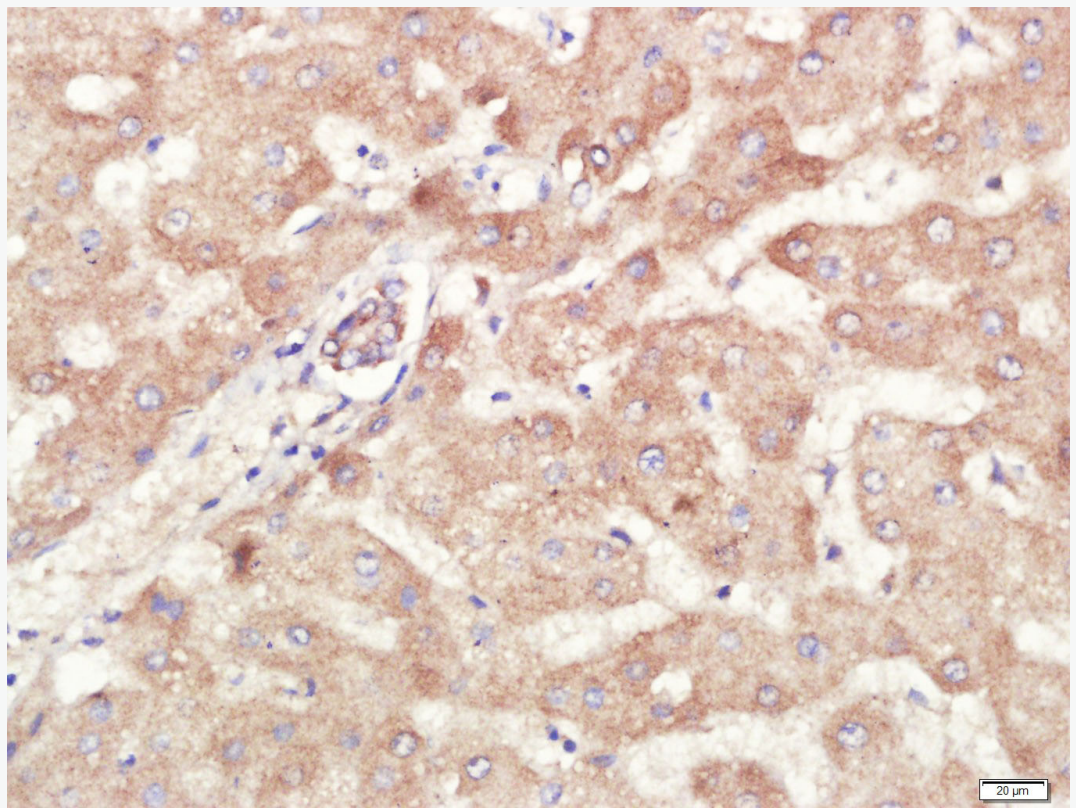
Secondary: IRDye800CW Goat Anti-Rabbit IgG at 1/20000 dilution

Predicted band size: 54kD

Observed band size: 54kD



Paraformaldehyde-fixed, paraffin embedded (human lung cancer); Antigen retrieval by boiling in sodium citrate buffer (pH6.0) for 15min; Block endogenous peroxidase by 3% hydrogen peroxide for 20 minutes; Blocking buffer (normal goat serum) at 37°C for 30min; Antibody incubation with (ALDH1) Polyclonal Antibody, Unconjugated (SL10162R) at 1:400 overnight at 4°C, followed by a conjugated secondary (sp-0023) for 20 minutes and DAB staining.



Paraformaldehyde-fixed, paraffin embedded (human liver cancer); Antigen retrieval by boiling in sodium citrate buffer (pH6.0) for 15min; Block endogenous peroxidase by 3% hydrogen peroxide for 20 minutes; Blocking buffer (normal goat serum) at 37°C for 30min; Antibody incubation with (ALDH1) Polyclonal Antibody, Unconjugated (SL10162R) at 1:400 overnight at 4°C, followed by a conjugated secondary (sp-0023) for 20 minutes and DAB staining.