

Rabbit Anti-ET-1 antibody

SL0954R

Product Name ET-1

Chinese Name 内皮素-1 抗体

Alias Endothelin-1; Big endothelin 1; EDN 1; EDN1; EDN1 protein; Endothelin1; ET 1; ET1; OTTHUMP00000039245; PPET1; Preproendothelin 1; Preproendothelin1.

Research Area Cardiovascular Cell biology immunology Neurobiology Kinases and Phosphatases

Immunogen Species Rabbit

Clonality Polyclonal

React Species Human, Mouse, Rat, (predicted: Dog, Pig, Cow, Horse, Sheep, Guinea Pig,)

Applications IHC-P=1:100-500,IHC-F=1:100-500,IF=1:100-500,Flow-Cyt=1ug/Test (Paraffin sections need antigen repair)
not yet tested in other applications.
optimal dilutions/concentrations should be determined by the end user.

Theoretical molecular weight 2.5/24kDa

Cellular localization Secretory protein

Form Liquid

Concentration 1mg/ml

immunogen KLH conjugated synthetic peptide derived from human ET-1(CSCSSLMDKECVYFCHLDIIW Disulfide bridges C1-C15, C3-C11): 53-73/202

Lsotype IgG

Purification affinity purified by Protein A

Buffer Solution 1M TBS(pH7.4) with 1% BSA, 3% Proclin300 and 50% Glycerol.

Storage Shipped at 4°C. Store at -20 °C for one year. Avoid repeated freeze/thaw cycles.

Attention This product as supplied is intended for research use only, not for use in human, therapeutic or diagnostic applications.

PubMed

[PubMed](#)

Endothelins (ET) show potent constrictor activity in vascular and non-vascular smooth muscle. This family of 21-amino acid peptides exists in at least three isoforms - ET-1, ET-2, and ET-3, and is produced in endothelial and epithelial cells. ET's can mediate biological effects in cells and tissues, and have been shown to bind to an ET receptor in the lung, kidney, heart, and liver. Endothelin 1 is expressed in lung, placental stem villi vessels and in cultured placental vascular smooth muscle cells.

Function:

Endothelins are endothelium-derived vasoconstrictor peptides.

Subcellular Location:

Secreted.

Tissue Specificity:

Expressed in lung, placental stem villi vessels and in cultured placental vascular smooth muscle cells.

Similarity:

Belongs to the endothelin/sarafotoxin family.

**Product
Detail**

SWISS:
P05305

Gene ID:
1906

Database links:

[Entrez Gene: 1906](#) Human

[Entrez Gene: 13614](#) Mouse

[Entrez Gene: 24323](#) Rat

[Omim: 131240](#) Human

[SwissProt: P05305](#) Human

[SwissProt: P22387](#) Mouse

[SwissProt: P22388](#) Rat

[Unigene: 511899](#) Human

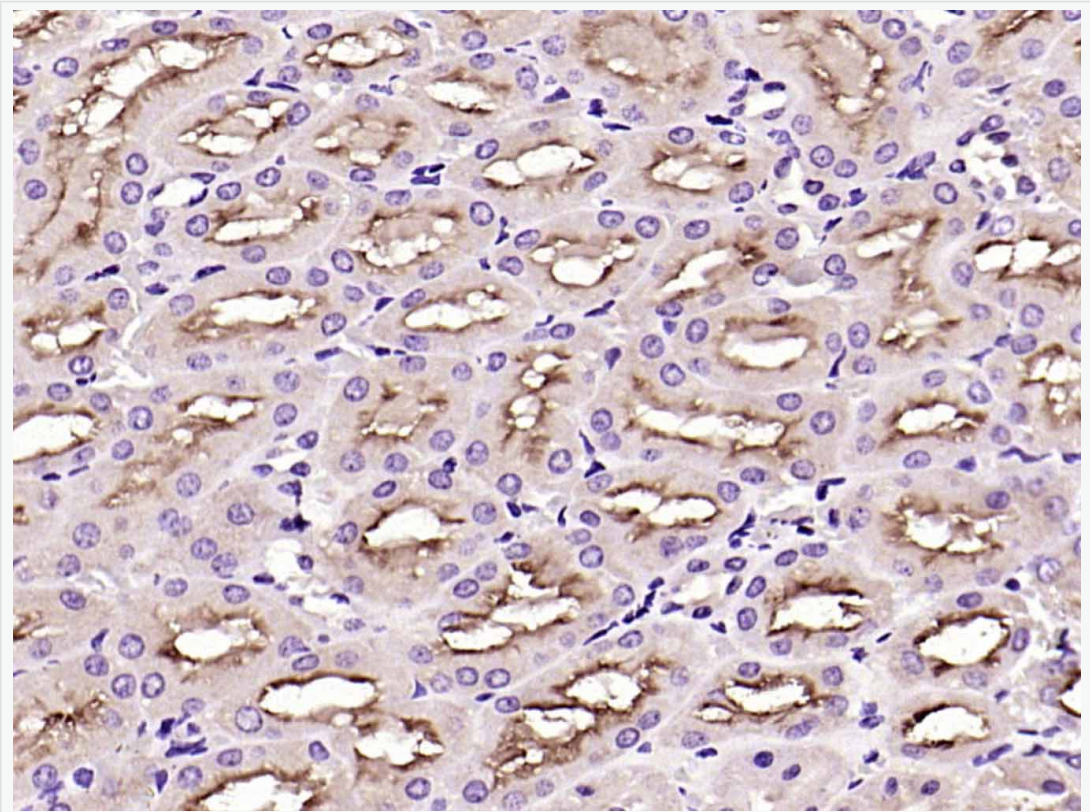
[Unigene: 713645](#) Human

[Unigene: 10918](#) Rat

内皮素(Endothelin-1,ET)是一种强的血管收缩剂,分为ET-1,ET-2,ET-3 三种,ET-1 主要在 endothelial cells 中表达,而 ET-2 和 ET-3 则主要在神经系统中表达。ET 具有广泛的生物学作用,此抗体是针对内皮素的活性片段

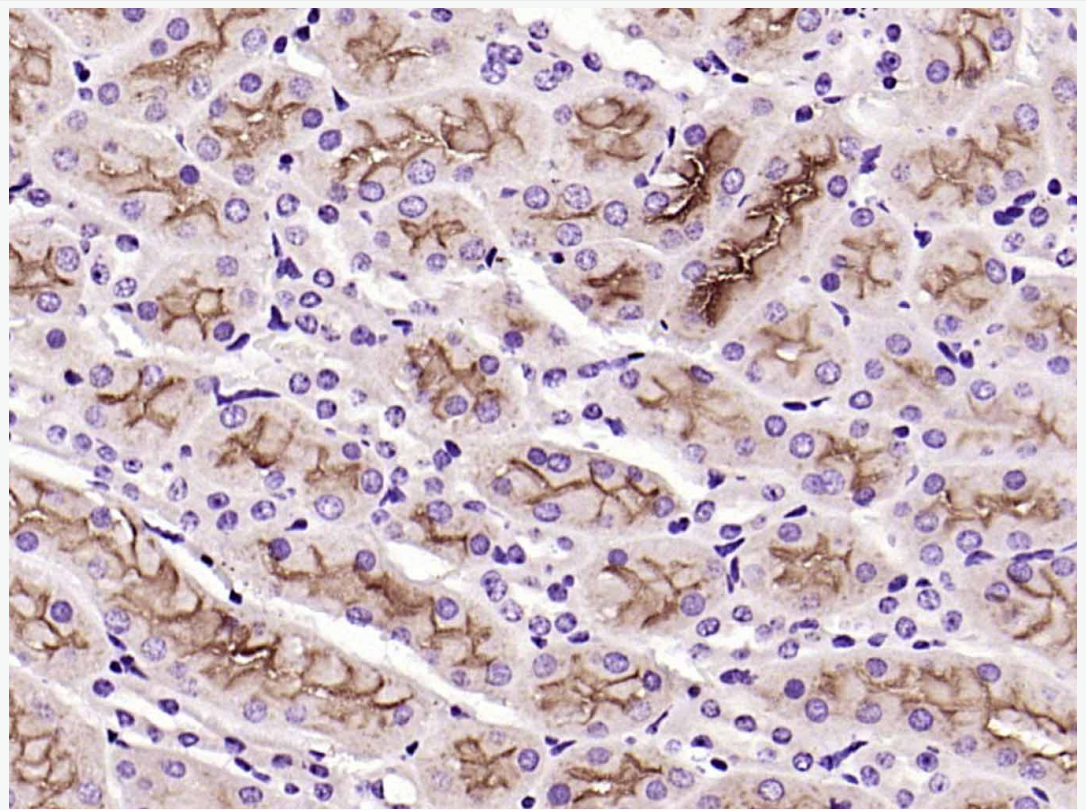
(CSCSSLMDKKECVYFCHLDIIW Disulfide bridges C1-C15, C3-C11)。

**Product
Picture**

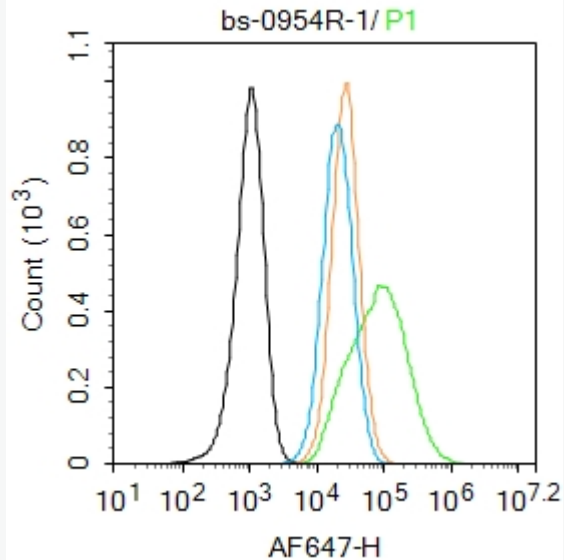


Paraformaldehyde-fixed, paraffin embedded (rat kidney); Antigen retrieval by boiling in sodium citrate buffer (pH6.0) for 15min; Block endogenous peroxidase by 3% hydrogen peroxide for 20 minutes; Blocking buffer (normal goat serum) at 37°C for 30min; Antibody incubation with (ET-1) Polyclonal Antibody, Unconjugated (SL0954R) at 1:200 overnight at 4°C, followed by operating

according to SP Kit(Rabbit) (sp-0023) instructions and DAB staining.



Paraformaldehyde-fixed, paraffin embedded (mouse kidney); Antigen retrieval by boiling in sodium citrate buffer (pH6.0) for 15min; Block endogenous peroxidase by 3% hydrogen peroxide for 20 minutes; Blocking buffer (normal goat serum) at 37°C for 30min; Antibody incubation with (ET-1) Polyclonal Antibody, Unconjugated (SL0954R) at 1:200 overnight at 4°C, followed by operating according to SP Kit(Rabbit) (sp-0023) instructions and DAB staining.



Blank control:A549.

Primary Antibody (green line): Rabbit Anti-ET-1 antibody (SL0954R)

Dilution: 1 μ g /10⁶ cells;

Isotype Control Antibody (orange line): Rabbit IgG .

Secondary Antibody : Goat anti-rabbit IgG-AF647

Dilution: 1 μ g /test.

Protocol

The cells were fixed with 4% PFA (10min at room temperature)and then permeabilized with 0.1% PBST for 20 min at room temperature. The cells were then incubated in 5%BSA to block non-specific protein-protein interactions for 30 min at room temperature .Cells stained with Primary Antibody for 30 min at room temperature. The secondary antibody used for 40 min at room temperature.

Acquisition of 20,000 events was performed.



SunLong Biotech Co.,LTD
Tel: 0086-571-56623320 Fax:0086-571-56623318
E-mail:sales@sunlongbiotech.com
www.sunlongbiotech.com
