

Rabbit Anti-LHB antibody

SL0952R

Product Name	LHB
Chinese Name	促黄体素 β 亚单位抗体
Alias	LSHB_HUMAN; Lutropin subunit beta; Lutropin beta chain; Luteinizing hormone subunit beta (LH-B; LSH-B; LH B; LSH-beta); CGB4; HH23;
Research Area	Growth factors and hormones Endocrinopathy
Immunogen Species	Rabbit
Clonality	Polyclonal
React Species	Human
Applications	WB=1:500-2000 (Paraffin sections need antigen repair) not yet tested in other applications. optimal dilutions/concentrations should be determined by the end user.
Theoretical molecular weight	16kDa
Cellular localization	Secretory protein
Form	Liquid
Concentration	1mg/ml
immunogen	KLH conjugated synthetic peptide derived from human LH: 101-141/141
Lsotype	IgG
Purification	affinity purified by Protein A
Buffer Solution	1M TBS(pH7.4) with 1% BSA, 3% Proclin300 and 50% Glycerol.
Storage	Shipped at 4°C. Store at -20 °C for one year. Avoid repeated freeze/thaw cycles.
Attention	This product as supplied is intended for research use only, not for use in human, therapeutic or diagnostic applications.
PubMed	PubMed
Product Detail	This gene is a member of the glycoprotein hormone beta chain family and encodes the beta subunit of luteinizing hormone (LH). Glycoprotein hormones are heterodimers consisting of a common alpha subunit and an unique beta subunit which confers biological specificity. LH is expressed in the pituitary

gland and promotes spermatogenesis and ovulation by stimulating the testes and ovaries to synthesize steroids. The genes for the beta chains of chorionic gonadotropin and for luteinizing hormone are contiguous on chromosome 19q13.3. Mutations in this gene are associated with hypogonadism which is characterized by infertility and pseudohermaphroditism. [provided by RefSeq, Jul 2008]

Function:

Promotes spermatogenesis and ovulation by stimulating the testes and ovaries to synthesize steroids.

Subunit:

Heterodimer of a common alpha chain and a unique beta chain which confers biological specificity to thyrotropin, lutropin, follitropin and gonadotropin.

Subcellular Location:

Secreted.

DISEASE:

Hypogonadism LHB-related (HGON-LHB) [MIM:152780]: Characterized by infertility and pseudohermaphroditism. Note=The disease is caused by mutations affecting the gene represented in this entry.

Similarity:

Belongs to the glycoprotein hormones subunit beta family.

SWISS:

P01229

Gene ID:

3972

Database links:

[Entrez Gene: 3972](#) Human

[Entrez Gene: 16866](#) Mouse

[Entrez Gene: 25329](#) Rat

[SwissProt: P01229](#) Human

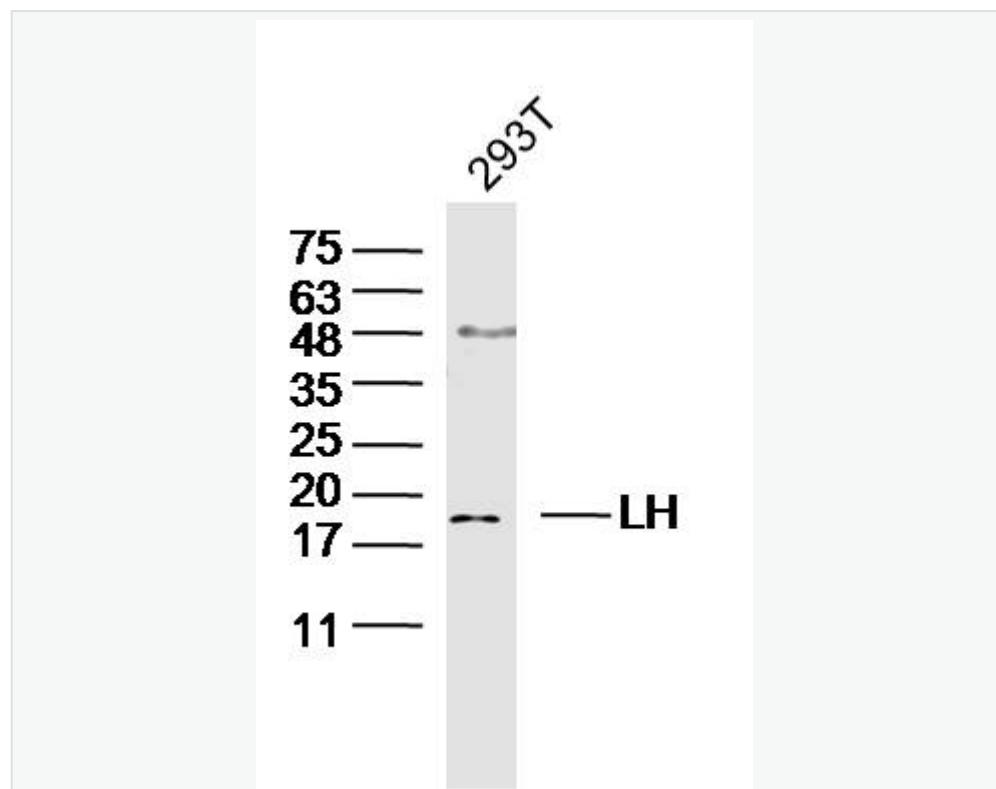
[SwissProt: O09108](#) Mouse

[SwissProt: P01230](#) Rat

LH 和 FSH 都是垂体前叶产生的,由两条多肽链(即 α 和 β 亚单位)经非共价键结合的 **glycoprotein**。LH 和 FSH 都是呈脉冲式分泌,故有较明显的日内和日间变异。

女性月经中期的 LH 高峰促成排卵,男性 LH 主要刺激 **Legdig** 细胞产生睾丸酮,又协同 FSH 促进精子成熟。与 FSH 同时测定,是研究和判断下丘脑 — 垂体 — 性腺轴功能的常规检查方法。LH 的测定在预测排卵时间上具有特殊重要意义,它还可用于绝经期检查,不孕症诊断和内分泌治疗的监测等。

Product Picture



Sample:293T(Human) Cell Lysate at 30 ug

Primary: Anti-CD200R (SL7351R) at 1/300 dilution

Secondary: IRDye800CW Goat Anti-Rabbit IgG at 1/20000 dilution

Predicted band size: 16 kD Observed band size: 19 kD