

## Rabbit Anti-Human Serum albumin (Loading Control)antibody

SL0945R

<b>Product Name</b>	Human Serum albumin (Loading Control)
<b>Chinese Name</b>	白蛋白（内参）抗体
<b>Alias</b>	ALB; ALBU_HUMAN; Albumin (32 AA); Albumin (AA 34); Analbuminemia; Bisalbuminemia; Cell growth inhibiting protein 42; DKFZp779N1935; Dysalbuminemic hyperthyroxinemia; Growth inhibiting protein 20; HSA; Hyperthyroxinemia dysalbuminemic; PRO0883; PRO0903; PRO1341; PRO2044; PRO2619; Serum albumin. 人血清白蛋白
<b>Product Type</b>	Internal reference anti
<b>Research Area</b>	Tumour Cell biology immunology Developmental biology Stem cells The new supersedes the old
<b>Immunogen Species</b>	Rabbit
<b>Clonality</b>	Polyclonal
<b>React Species</b>	Human,Mouse,Rat,Goat (predicted:Dog)
<b>Applications</b>	WB=1:500-2000 （Paraffin sections need antigen repair） not yet tested in other applications. optimal dilutions/concentrations should be determined by the end user.
<b>Theoretical molecular weight</b>	69kDa
<b>Cellular localization</b>	Secretory protein
<b>Form</b>	Liquid
<b>Concentration</b>	1mg/ml
<b>immunogen</b>	human Serum albumin purified
<b>Lsotype</b>	IgG
<b>Purification</b>	affinity purified by Protein A
<b>Buffer Solution</b>	1M TBS(pH7.4) with 3% Proclin300 and 50% Glycerol.
<b>Storage</b>	Shipped at 4°C. Store at -20 °C for one year. Avoid repeated freeze/thaw cycles.
<b>Attention</b>	This product as supplied is intended for research use only, not for use in

human, therapeutic or diagnostic applications.

## PubMed

### [PubMed](#)

Albumin is a soluble, monomeric protein which comprises about one-half of the blood serum protein. Albumin functions primarily as a carrier protein for steroids, fatty acids, and thyroid hormones and plays a role in stabilizing extracellular fluid volume. Albumin is a globular unglycosylated serum protein of molecular weight 65,000. Albumin is synthesized in the liver as prealbumin which has an N-terminal peptide that is removed before the nascent protein is released from the rough endoplasmic reticulum. The product, prealbumin, is in turn cleaved in the Golgi vesicles to produce the secreted albumin. [provided by RefSeq, Jul 2008].

### **Function:**

Serum albumin, the main protein of plasma, has a good binding capacity for water, Ca(2+), Na(+), K(+), fatty acids, hormones, bilirubin and drugs. Its main function is the regulation of the colloidal osmotic pressure of blood. Major zinc transporter in plasma, typically binds about 80% of all plasma zinc.

### **Subcellular Location:**

Secreted.

## Product Detail

### **Tissue Specificity:**

Plasma.

### **Post-translational modifications:**

Kenitra variant is partially O-glycosylated at Thr-620. It has two new disulfide bonds Cys-600 to Cys-602 and Cys-601 to Cys-606.

Glycated in diabetic patients.

Phosphorylation sites are present in the extracellular medium.

Acetylated on Lys-223 by acetylsalicylic acid.

### **DISEASE:**

Defects in ALB are a cause of familial dysalbuminemic hyperthyroxinemia (FDH) [MIM:103600]. FDH is a form of euthyroid hyperthyroxinemia that is due to increased affinity of ALB for T(4). It is the most common cause of inherited euthyroid hyperthyroxinemia in Caucasian population.

### **Similarity:**

Belongs to the ALB/AFP/VDB family.

Contains 3 albumin domains.

### **SWISS:**

P02769

**Gene ID:**  
280717

**Database links:**

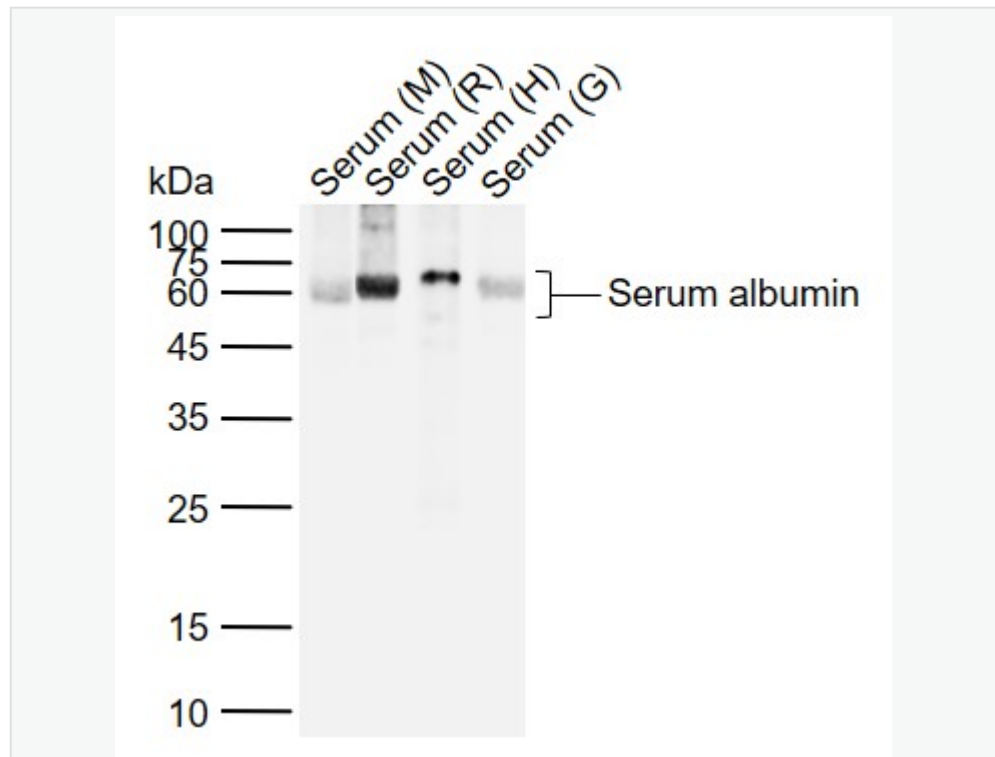
[Entrez Gene: 213](#) Human

[Omid: 103600](#) Human

[SwissProt: P02768](#) Human

[Unigene: 418167](#) Human

**Product Picture**



Sample:

Lane 1: Mouse Serum

Lane 2: Rat Serum

Lane 3: Human Serum

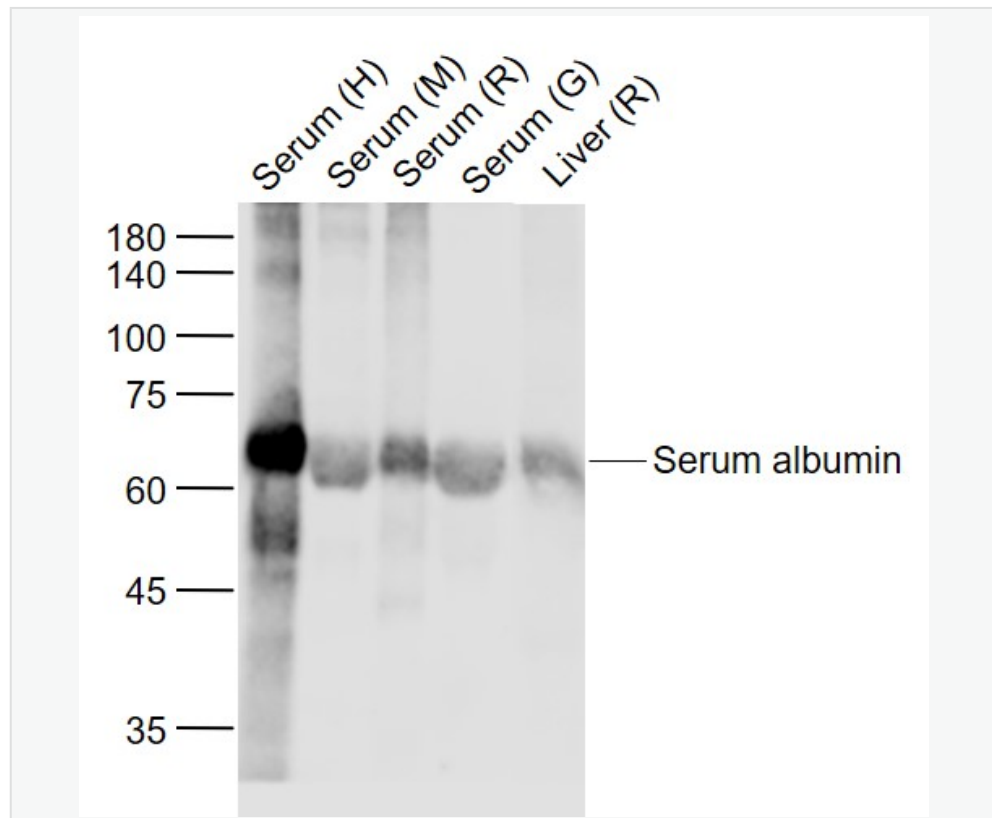
Lane 4: Goat Serum

Primary: Anti-Human Serum albumin (SL0945R) at 1/1000 dilution

Secondary: IRDye800CW Goat Anti-Rabbit IgG at 1/20000 dilution

Predicted band size: 69 kDa

Observed band size: 62 kDa



Sample:

Lane 1: Serum (Human) at 20 ug

Lane 2: Serum (Mouse) at 20 ug

Lane 3: Serum (Rat) at 20 ug

Lane 4: Serum (Goat) at 20 ug

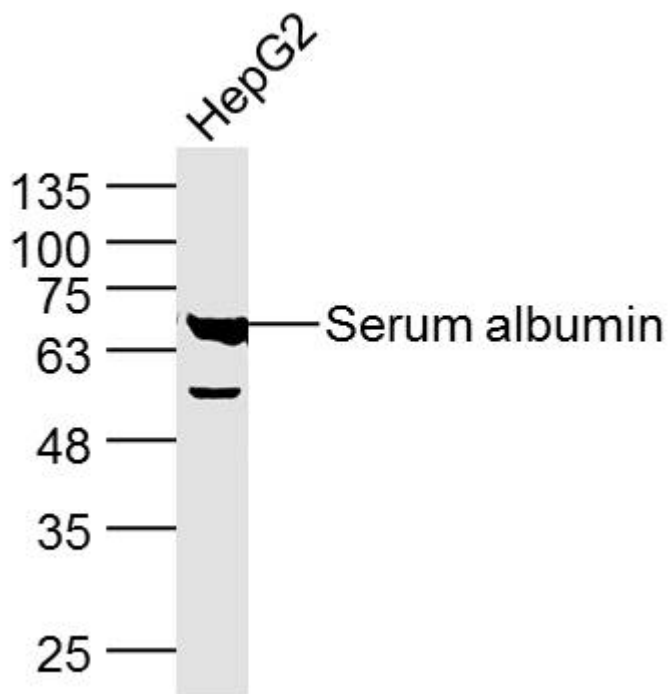
Lane 5: Liver (Rat) tissue lysates at 40 ug

Primary: Anti-Human Serum albumin (SL0945R) at 1/1000 dilution

Secondary: IRDye800CW Goat Anti-Rabbit IgG at 1/20000 dilution

Predicted band size: 69 kD

Observed band size: 65 kD



Sample:HepG2 Cell (Human) Lysate at 40 ug

Primary: Anti-Serum albumin (SL0945R) at 1/300 dilution

Secondary: IRDye800CW Goat Anti-Rabbit IgG at 1/20000 dilution

Predicted band size: 69 kD



SunLong Biotech Co.,LTD  
Tel: 0086-571-56623320 Fax:0086-571-56623318  
E-mail:sales@sunlongbiotech.com  
www.sunlongbiotech.com

---

Observed band size: 69 kD